

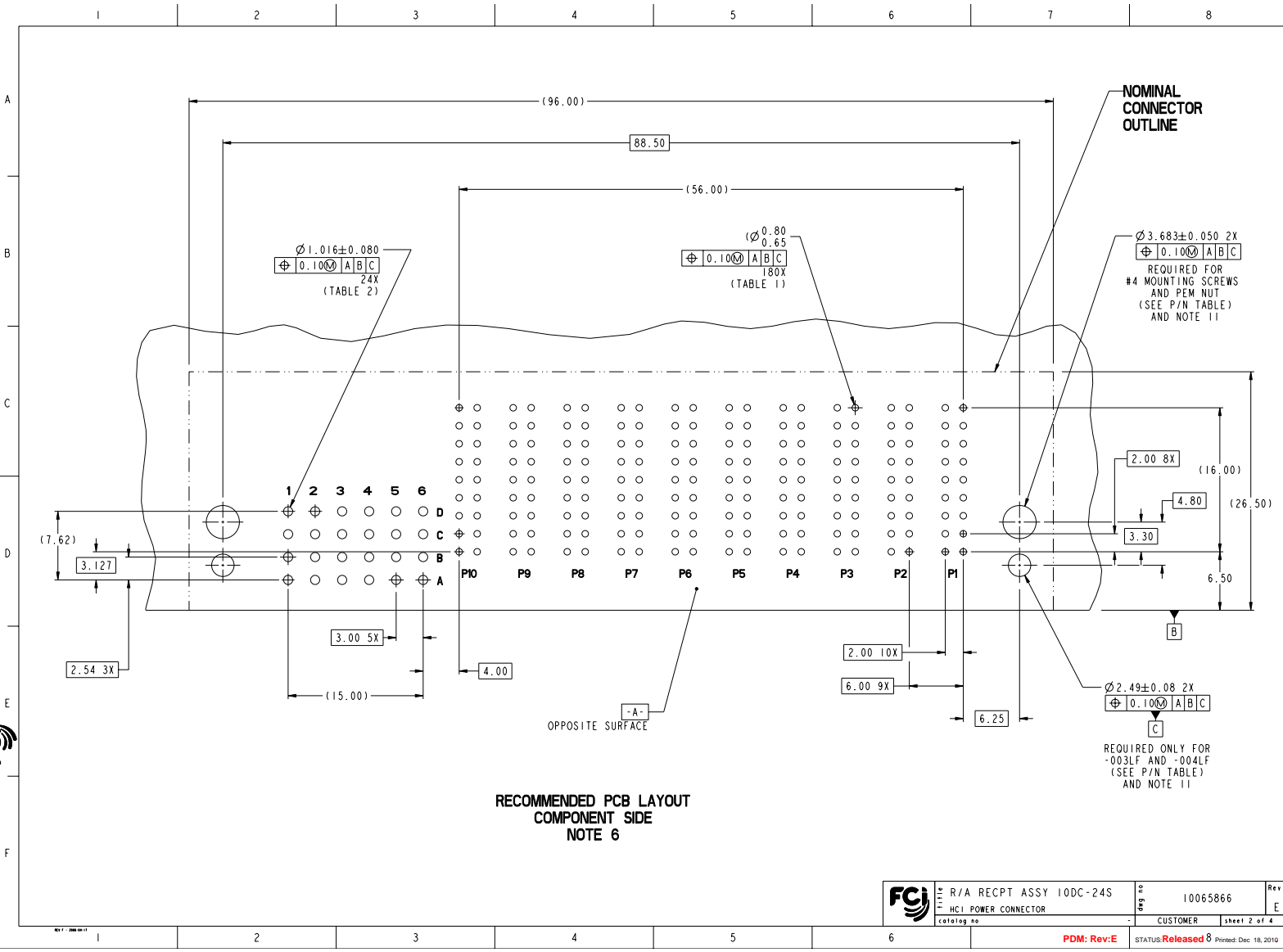
RETENTION CLIPS
OPTIONAL
(SEE P/N TABLE)

www.fciconnect.com		surface	tolerance std	projection	MM
		ASME Y14.5	ASME Y14.5	ASME Y14.5	
TOLERANCES UNLESS OTHERWISE SPECIFIED					
		ANGULAR	LINEAR	SIZE	Scale
			0.xx	±.3	A2
			0.xxx	±.050	ECN
					Spec ref
		Product family			
		R/A RECPT ASSY 10DC-24S		10065866	Rev.
		HCl POWER CONNECTOR		CUSTOMER	sheet 1 of 4
		catalog no			

rev	ecn no	dr	date
A	V06-1187	BAB	2006/12/06
B	V07-0462	TH	2007/07/03
C	V07-0487	TH	2007/07/20
D	V08-0053	BAB	2008-02-04
E	V08-0243	TH	2008-06-03



Copyright FCI



	R/A RECPT ASSY 10DC-24S	REV. 02	10065866	Rev. E
	HCI POWER CONNECTOR	CUSTOMER	Sheet 2 of 4	

PDM: Rev:E STATUS: Released 8 Printed: Dec 18, 2010

Copyright FCJ

1 2 3 4 5 6 7 8

A

B

C


D

E

F

TOP LAYER DESCRIPTION	TABLE 1 (HCl POWER) PLATED THROUGH-HOLE REQUIREMENTS							
	DRILLED HOLE DIAMETER	COPPER THICKNESS	TIN-LEAD THICKNESS	NICKEL THICKNESS	GOLD THICKNESS	TIN THICKNESS	SILVER THICKNESS	FINISHED HOLE DIAMETER
TIN-LEAD	0.81-0.86 (0.85 DRILL)	0.025 - 0.050	0.005 - 0.015	--	--	--	--	0.65 - 0.80
IMMERSON TIN	0.81-0.86 (0.85 DRILL)	0.025 - 0.050	--	--	--	0.9 - 1.5um	--	0.70 - 0.80
IMMERSON SILVER	0.81-0.86 (0.85 DRILL)	0.025 - 0.050	--	--	--	--	0.15 - 0.65um	0.70 - 0.80
COPPER (SEE NOTE 9)	0.81-0.86 (0.85 DRILL)	0.025 - 0.050	--	--	--	--	--	0.70 - 0.80
GOLD	0.81-0.86 (0.85 DRILL)	0.025 - 0.050	--	0.003 - 0.007	FLASH UP TO 0.0002	--	--	0.69 - 0.80

TOP LAYER DESCRIPTION	TABLE 2 (HPC SIGNALS) PLATED THROUGH-HOLE REQUIREMENTS							
	DRILLED HOLE DIAMETER	COPPER THICKNESS	TIN-LEAD THICKNESS	NICKEL THICKNESS	GOLD THICKNESS	TIN THICKNESS	SILVER THICKNESS	FINISHED HOLE DIAMETER
TIN-LEAD	1.125-1.175 (∅ .0453±.0010)	0.025-0.050	0.005 - 0.015	--	--	--	--	0.94 - 1.10 (∅ .040±.003)
IMMERSON TIN			--	--	--	--	--	
IMMERSON SILVER			--	--	--	--	--	
COPPER (SEE NOTE 9)			--	--	--	--	--	
GOLD			--	--	--	--	--	

	R/A RECPT ASSY 10DC-24S	Part No	10065866	Rev.	E
	HCl POWER CONNECTOR	Customer			

PDM: Rev:E STATUS:Released 8 Printed: Dec 18, 2010

1 2 3 4 5 6 7 8

A

B

C

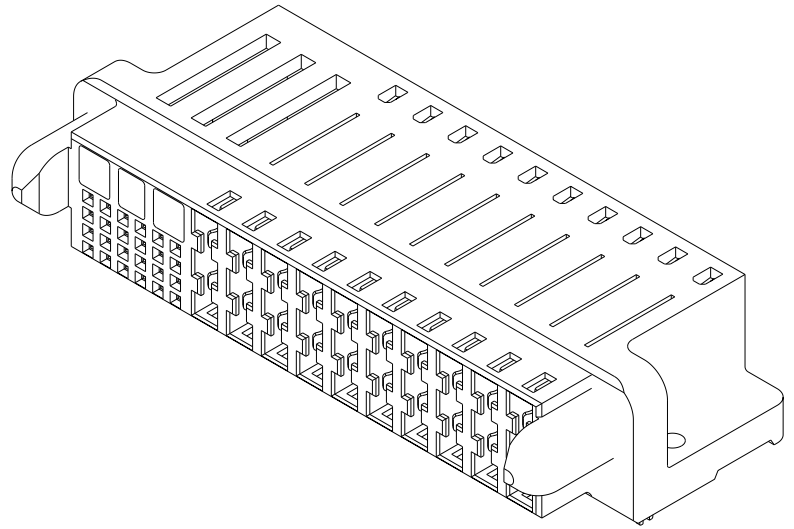
D

E

F

Copyright FCJ

PART NUMBER	RETENTION CLIPS	#4 SCREW	DIM A (TAIL LENGTH)	TAIL TYPE
10065866-001LF	NO	YES	3.43	SOLDER TAIL
10065866-002LF	NO	YES	4.70	SOLDER TAIL
10065866-003LF	YES	NO	3.43	SOLDER TAIL
10065866-004LF	YES	NO	4.70	SOLDER TAIL



NOTES:

1. CONNECTOR MATERIALS:
HOUSING: HIGH TEMPERATURE THERMOPLASTIC, BLACK
UL 94V-0 COMPLIANT
CONTACTS: HIGH PERFORMANCE COPPER ALLOY
2. CONTACT FINISH (REF. GS-12-380 SECTION 5.2)
3. PRODUCT SPECIFICATION: GS-12-380.
4. APPLICATION SPECIFICATION: GS-20-070.
5. PRODUCT MARKING (PRODUCT NUMBER & DATE CODE) ON HOUSING IN AREA SHOWN.
6. MINIMUM NOMINAL PCB THICKNESS: 1.6mm
7. PACKAGING MEETS FCI SPECIFICATION GS-14-1073.
8. HOUSING COMPONENT WILL WITHSTAND EXPOSURE TO 260°C PEAK TEMPERATURE FOR 60 SECONDS IN A CONVECTION, INFRA-RED, OR VAPOR PHASE REFLOW OVEN.
9. COPPER PLATING THICKNESS IN CENTER OF VIA-HOLE CAN BE NO MORE THAN 0.003 LESS THAN OTHER AREAS.
10. ALL HOLE SIZES ARE FINISHED HOLE SIZES.
11. MOUNTING HOLES ARE UNPLATED.

FCI	R/A RECPT ASSY 10DC-24S	org no	10065866	Rev.	E
	HC1 POWER CONNECTOR	CUSTOMER		sheet 4 of 4	

PDM: Rev:E STATUS:Released 8 Printed: Dec 18, 2010