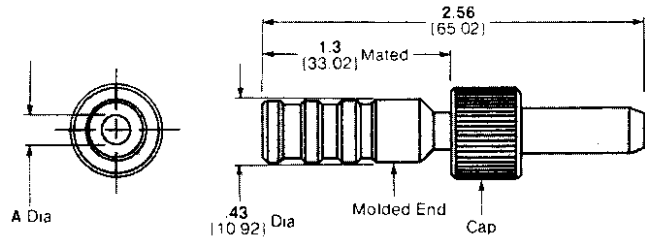
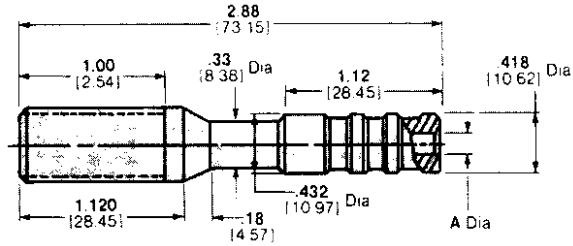


Plug Kits

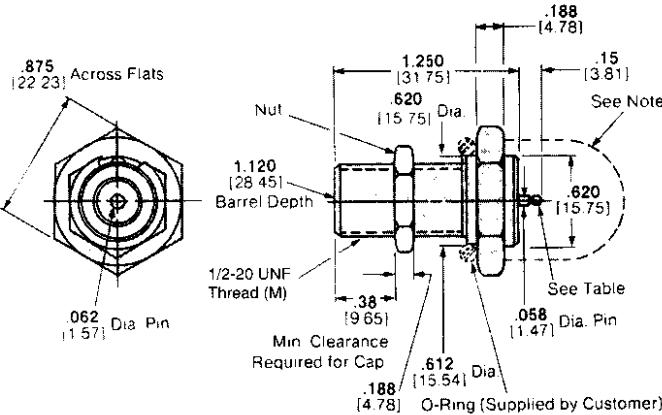


These plugs mate with receptacles shown on this page.

Free-Hanging Receptacle Kits

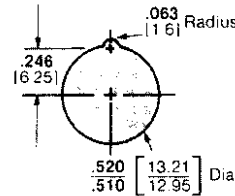
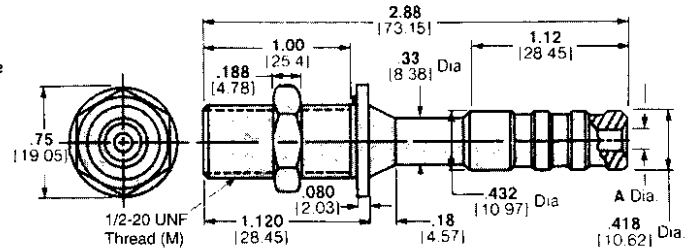


Bulkhead-Mounted Receptacle Kits

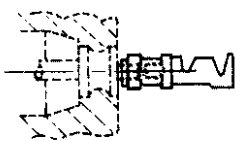


Note: If bulkhead and mounting hardware are metal at ground potential, the back end of the receptacle must be protected against arc-over and breakdown.

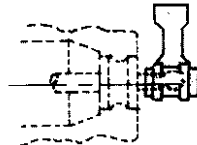
Bulkhead-Mounted Receptacle Kits With Rear Insulation Collar



Recommended Panel Cutout for Bulkhead Mounting



Straight Socket
Part Number 60789-1



Right-Angle Socket
Part Number 61276-2

Voltage Rating	Description	Wire Size		Max. Ins. Dia.	Contact Part Number	Kit Part Number	Tooling Part No.	
		AWG	mm ²				Hand Tool	Extraction Tool
20 KVDC	Plug Kits*	22-20	0.3-0.6	.185	66399-1	861610-1	91523-1	861751-1
		18-16	0.8-1.4	4.7	66101-2	861610-3	91505-1	861751-1
		—	—	—	none	861610-5	—	861751-1
		22-20	0.3-0.6	.185	66399-1	861610-4	91523-1	861751-1
		18-16	0.8-1.4	.302	66101-2	861610-2	91505-1	861751-1
		—	—	—	none	861610-6	—	861751-1
	Free-Hanging Receptacle Kits*	22-20	0.3-0.6	.185	66400-1	861753-1	91523-1	861751-1
		18-16	0.8-1.4	4.7	66099-2	861753-3	91505-1	861751-1
		22-20	0.3-0.6	.302	66400-1	861753-4	91523-1	861751-1
		18-16	0.8-1.4	7.67	66099-2	861753-2	91505-1	861751-1
	Bulkhead-Mounted Receptacle Kits*	—	—	—	none	861611-1	—	—
		—	—	—	60789-1 (Straight)**	861611-2	91507-1	—
		—	—	—	61276-2 (Right-Angle)**	861611-3	91507-1	—
	Bulkhead-Mounted Receptacle Kits* (with Rear Insulation Collar)	22-20	0.3-0.6	.185	66400-1	862197-1	91523-1	861751-1
		18-16	0.8-1.4	4.7	66099-2	862197-3	91505-1	861751-1
		—	—	—	none	862197-5	—	861751-1
		22-20	0.3-0.6	.185	66400-1	862197-4	91523-1	861751-1
		18-16	0.8-1.4	.302	66099-2	862197-2	91505-1	861751-1
—		—	—	none	862197-6	—	861751-1	

* Contact included with kit.

** Crimp-on Contacts.

High Voltage Connectors