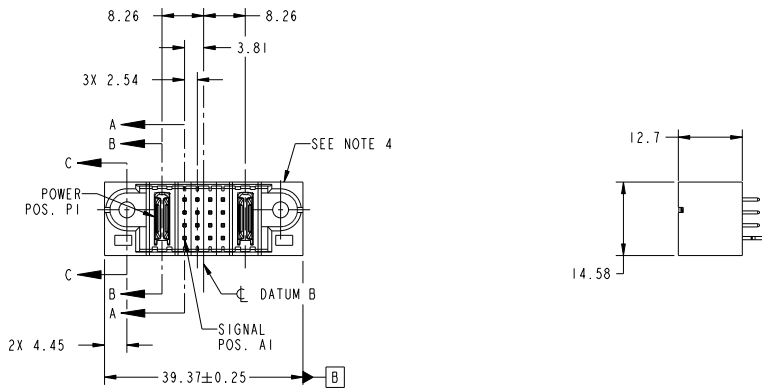


Tous droits strictement réservés. Reproduction ou communication à des tiers interdite sous quelque forme que ce soit sans autorisation écrite du propriétaire. Propriété de FCJ. Droits de reproduction FCJ.



All rights strictly reserved. Reproduction or issue to third parties in any form without written authority from the proprietor. Property of FCJ. Copyright FCJ.

PRODUCT NO. 51710-036 NOTE ③	ROWS DCBA	1 2					
		POWER	SIGNAL	POWER	POWER	POWER	POWER
		E1	P1	1	2	3	4
				P2	E2		



CODE	DIM "M" MATING LENGTH	CONTACT TYPE
PA	[N/A]	POWER
E	[6.86]	SIGNAL
HA	[N/A]	HOLD-DOWN
H	[5.59]	SIGNAL

mat'l code				tolerances unless otherwise specified		CUSTOMER		FCJ		www.fcjconnect.com	
lfr	ecn no.	dr	date	linear	0.X ±0.5	COPY		projection	title	IP + 16S + 1P	
A	D609-0305	JW	09/16/09		0.XX ±0.25			⊕	VERTICAL SOLDER HEADER		
				angles	0.XXX ±0.1			MM	product family	PwrBlade	code
				gr	0° ±2°				size	dwg no	213
				eng	JULIA WANG 09/14/09				scale	51710-036	sheet
				chr	JULIA WANG 09/14/09					1 of 4	
				appd	PM ZHENG 09/14/09						
					JOSEPH HSIA 09/14/09						
sheet index	revision	A	A	A	A						
	sheet	1	2	3	4						

cage code 22526

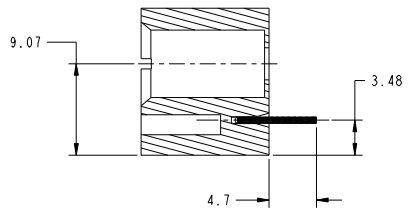
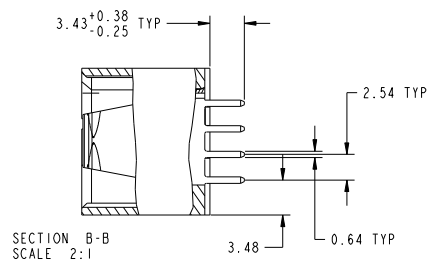
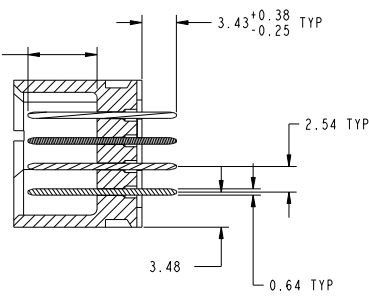
Tous droits strictement réservés. Reproduction ou communication à des tiers interdite sous quelque forme que ce soit sans autorisation écrite du propriétaire. Propriété de FCJ. Droits de reproduction FCJ.

All rights strictly reserved. Reproduction or issue to third parties in any form whatsoever is not permitted without written authority from the proprietor. Property of FCJ. Copyright FCJ.



PRODUCT NUMBER
51710-036__
NOTE 3

DIM "M" ±0.25
SECTION A-A
SCALE 2:1



SECTION C-C
SCALE 2:1

mat'l code				tolerances unless otherwise specified		CUSTOMER		FCJ	
lfr	ecn no.	dr	date	linear	0.X ±0.5	COPY	www.fcjconnect.com		
A					0.XX ±0.25	projection	title IP + 16S + 1P VERTICAL SOLDER HEADER		
				angles	0.XXX ±0.1		product family PwrBlade code 213		
				dr	±2°	MM	size dwg no 51710-036 sheet 2 of 4		
				eng	JULIA WANG 09/14/09	scale	A		
				chr	JULIA WANG 09/14/09	1:1			
				appd	PM ZHENG 09/14/09				
					JOSEPH HSIA 09/14/09				
sheet index	revision sheet								

Pro/E

code code 22526

PDM: Rev:A

STATUS:Released

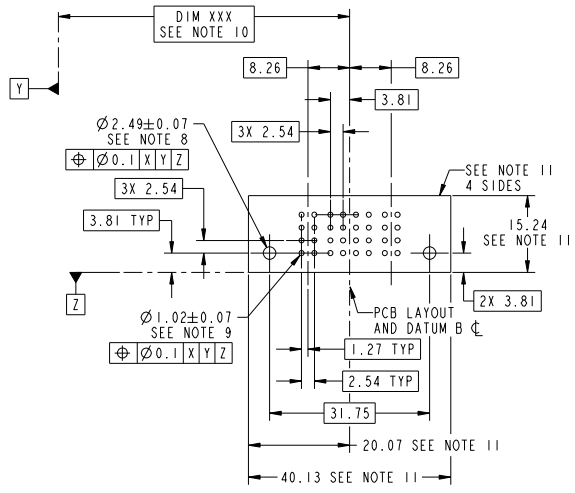
Printed: Dec 20, 2010

Tous droits strictement réservés. Reproduction ou communication à des tiers interdite sous quelque forme que ce soit sans autorisation écrite du propriétaire. Propriété de c.F.CI. Droits de reproduction F.CI.

All rights strictly reserved. Reproduction or issue to third parties in any form whatsoever is not permitted without written authority from the proprietor. Property of F.CI. Copyright F.CI.



PRODUCT NUMBER
51710-036--
NOTE 3



mat'l code				tolerances unless otherwise specified		CUSTOMER		FCI		www.fciconnect.com	
ltr	ecn no.	dr	date	linear	0.X ±0.5	COPY	projection	title			
A					0.XX ±0.25		MM	IP + 16S + 1P			
				angles	0.XXX ±0.1			VERTICAL SOLDER HEADER			
				dr	±2°			product family	PwrBlade	code	213
				eng	JULIA WANG 09/14/09			size	dwg no	51710-036	sheet
				chr	PM ZHENG 09/14/09	scale	1:1	A			3 of 4
				appd	JOSEPH HSIA 09/14/09						
sheet index	revision sheet										

1 | 2 Pro/E 3 | cage code 22526 4

Tous droits strictement réservés. Reproduction ou communication à des tiers interdite sous quelque forme que ce soit sans autorisation écrite du propriétaire. Propriété de FCI. Droits de reproduction FCI.



All rights strictly reserved. Reproduction or issue to third parties in any form whatsoever is not permitted without written authority from the proprietor. Property of FCI. Copyright FCI.

PRODUCT NUMBER
51710-036_
NOTE 3

NOTES:

1. DIMENSIONS AND TOLERANCES ARE IN ACCORDANCE WITH ASME Y14.5M, 1994 UNLESS OTHERWISE SPECIFIED.

CONNECTOR NOTES:

- ② HOUSING MATERIAL: UL 94 V-0 GLASS FILLED
HIGH-TEMP THERMOPLASTIC
POWER CONTACT MATERIAL: COPPER ALLOY
SIGNAL PIN MATERIAL: COPPER ALLOY
- 3. PLATING:
SEE ITEM 1 & 2 IN PRINT 10064183 FOR PLATING SPEC. OF 51710-036 ,51710-036LF RESPECTIVELY.

④ MANUFACTURER'S NAME, P/N, AND DATE CODE TO APPEAR ON THIS SURFACE.

5. PRODUCT SPECIFICATION GS-12-149.
APPLICATION SPECIFICATION BUS-20-067.

6. PACKAGED IN TRAYS.

PCB NOTES:

- 7. ALL HOLE DIAMETERS ARE FINISHED HOLE SIZE.
- 8. MOUNTING HOLES, WHERE APPLICABLE, ARE UNPLATED.

⑨ $\varnothing 1.151 \pm 0.025$ DRILLED HOLES PLATED WITH
0.008 MIN SnPb OR Sn OVER .001 [0.03]
TO 0.08 Cu PLATING TO ACHIEVE
 $\varnothing 1.02 \pm .07$ HOLE.

⑩ "DIM XXX" TO BE DETERMINED BY THE CUSTOMER.

⑪ CONNECTOR KEEP-OUT ZONE.

mat'l code				tolerances unless otherwise specified		CUSTOMER		FCI	
litr	ecm no.	dr	date	linear	angles	projection	title	product family	code
A				$0.X \pm 0.5$	$0^{\circ} \pm 2^{\circ}$		IP + 16S + IP VERTICAL SOLDER HEADER	PwrBlade	213
				$0.XX \pm 0.25$				51710-036	4 of 4
				$0.XXX \pm 0.1$		scale			
				dr JULIA WANG 09/14/09		1:1			
				eng JULIA WANG 09/14/09					
				chr PH ZHENG 09/14/09					
				appd JOSEPH HSIA 09/14/09					
sheet index	revision sheet								

cage code 22526