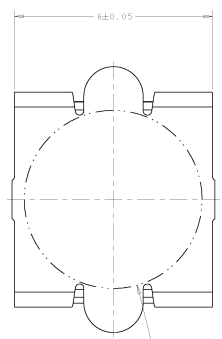
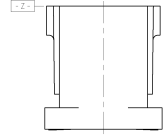
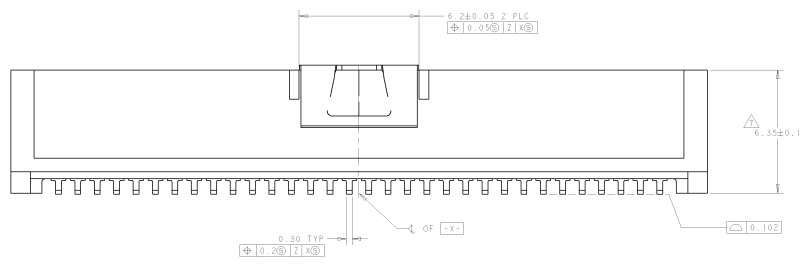
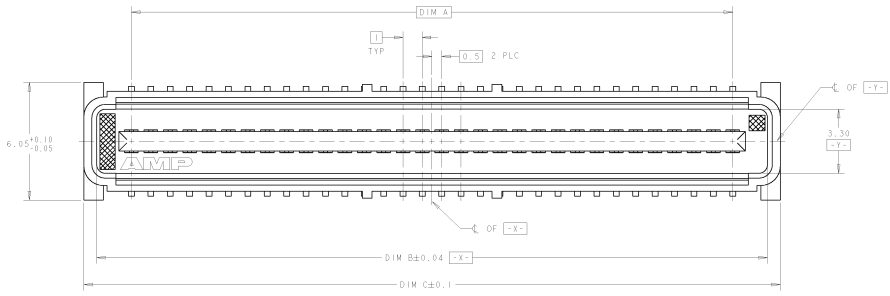
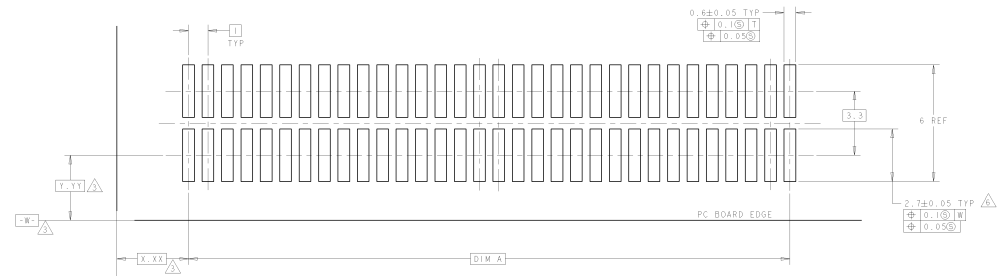


REV	DATE	DESCRIPTION	BY	CHK	APP
1	08/11/04	REVISED PER EC 0512-0012-04	AMBA	JG	PD
2	08/11/04	REVISED PER EC 0512-0012-04	AMBA	JG	PD
3	08/11/04	REVISED PER EC 0512-0012-04	AMBA	JG	PD



VACUUM COVER



RECOMMENDED PC BOARD LAYOUT

- △ HOUSING MATERIAL: LIQUID CRYSTAL POLYMER COLOR: BLACK. CONTACT MATERIAL: PHOSPHOR BRONZE.
- △ CONTACT FINISH: 0.00381 MINIMUM MATTE TIN-LEAD (93-7) ON SOLDER AREA, 0.00076 MINIMUM GOLD ON MATING AREA, BOTH OVER 0.00127 MINIMUM NICKEL ON ENTIRE CONTACT.
- △ DATUM LOCATIONS AND BASIC DIMENSIONS TO BE ESTABLISHED BY THE CUSTOMER. CONSULT AMP ENGINEERING WHEN PLACING MULTIPLE CONNECTORS ON A PC BOARD.
- 4. PACKAGED IN TAPE ON REEL PER EIA-481.
- 5. VACUUM COVER DESIGNED FOR 4mm DIA. NOZZLE. VACUUM COVER TO BE REMOVED AFTER SOLDERING. VACUUM COVER REMOVED FROM SOME VIEWS FOR DIMENSIONAL CLARITY.
- △ SHORTER SOLDER LANDS MAY BE USED PER EIA 700AAB, HOWEVER 2.7 LENGTH ASSURES OPTIMUM SOLDER FILLET REGARDLESS OF MANUFACTURER OF CONNECTOR.
- △ REFERRED TO AS DIM N IN EIA 700AAB SPECIFICATION.
- △ 5.5 MIN DIAMETER TARGET AREA FOR VACUUM PICK-UP. CONTACT FINISH: 0.00381 MINIMUM MATTE TIN-LEAD (93-7) ON SOLDER AREA, 0.00127 MINIMUM GOLD ON MATING AREA, BOTH OVER 0.00127 MINIMUM NICKEL ON ENTIRE CONTACT.
- △ OBSOLETE PART NUMBER.

FINISH	DIM C	DIM B	DIM A	MATING CONNECTOR	STACK HGTS	PDS	PART NO
△	45.9	44.58	41	120528-2	8	8.4	1-120532-2
△	35.9	34.58	31	120528-1	8	6.4	1-120532-1
△	45.9	44.58	41	120528-2	8	8.4	120532-2
△	35.9	34.58	31	120528-1	8	6.4	120532-1

MANUFACTURER: AMP PART NO: 120528-2 MFG: 120528-2 DATE: 08/11/04	DRAWN: TERRY L. BROWN CHECKED: JERRY G. [Signature] DATE: 08/11/04	TITLE: PLUG ASSEMBLY W/ COVER 1 (0mm) FH1 (EEE) 389) CONNECTOR	DATE: 08/11/04 PART NO: 120532-2 CUSTOMER DRAWING:
---	--	---	--