



USB + Power Connectors

Description

The USB + Power Connector is a new interconnect system developed to meet the power requirements of devices using Universal Serial Bus and combine all personal computing interface ports into one connector. This is a plug-and-play connector which allows hot plugging capability and can handle data rates up to 480Mbps.

Features & Benefits

- Back shield for better EMI
- USB Section: 4-pin
- Power Section: 5-pin
- Standard Through-Hole and Mid-Board options
- Plug and play
- Hot plugging capability
- Serial data: 480Mbps
- Broad industry support
- Standard feature in new PC chipsets
- Simple and flexible design

Target Markets

- PC Motherboard and Mobile Computing

Target Applications

- Desktop and Mobile Computers



Technical Data

Materials

- Housing
 - High Temperature Plastic
 - Glass Fiber UL94V-0
- Contact
 - Copper Alloy
- Shield
 - Copper Alloy

Mechanical Performance

- Exceeds USB 2.0 Standard
- Durability
 - 5000 cycles
- Mating Force
 - <66N (15lb.) per plug
- Unmating Force
 - <44N (10lb.) per plug



Electrical Performance

- Meets USB 2.0 Specification
- Insulation Resistance
 - >1000MΩ minimum initial, Per EIA 364-21
- Dielectric Withstanding Voltage
 - 750V AC, 60 at sea level, Per EIA 364-20, Method A
- Low Level Contact Resistance
 - 30mΩ maximum initial, Per EIA 364-23
- Current Rating
 - USB Section: 1A
 - Power Section: 3A

Specifications

- USB 2.0 Specification
- FCI Product Specification GS-12-130

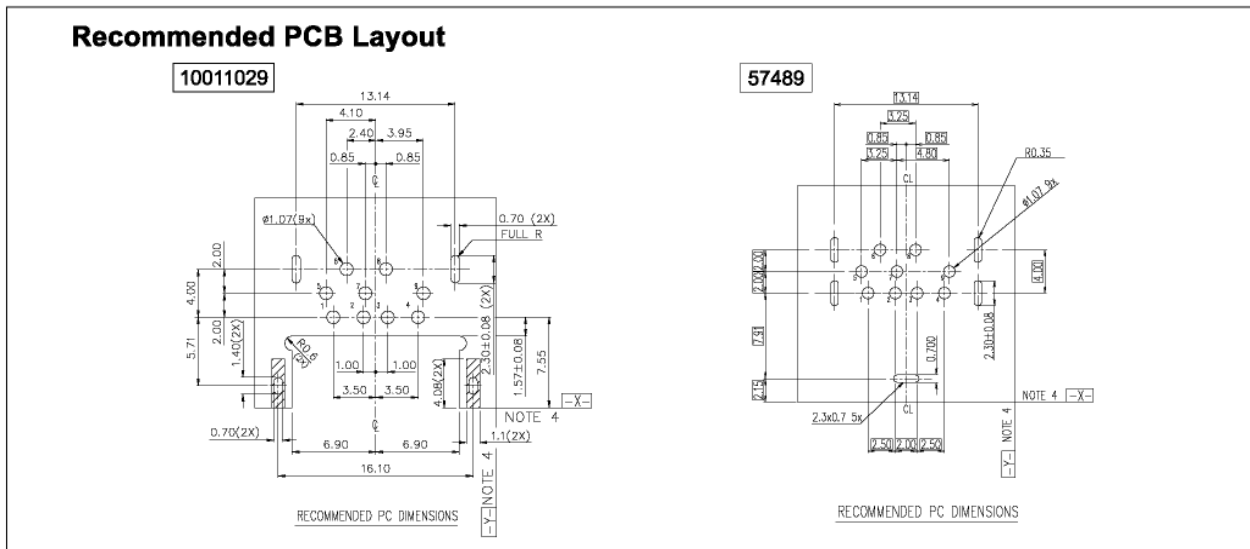
Packaging

- Tape and Reel: 10011029
- Tube: 57489 and 10011029

Ordering Information

- Part Numbers
 - 57489-1010B For 1.2mm thick PCB and Tail length is 1.9mm
 - 57489-1020B For 1.6mm thick PCB and Tail length is 2.6mm
 - 10011029-1020BP Tubes packaging with 30μ" AU contact area and 100μ" Tin / Lead tail area
 - 10011029-1020RP Tape and Reel packaging with 30μ" AU contact area and 100μ" Tin / Lead tail area
 - 10011029-1021BPLF Tubes packaging with 30μ" AU contact area and 100μ" Tin tail area
 - 10011029-1021RPLF Tape and Reel packaging with 30μ" AU contact area and 100μ" Tin tail area

Recommended PCB Layout



For more information, please visit our website at www.fciconnect.com

Americas Tel.: 1 800 237 2374 / 1 717 938 7200 Europe Tel.: 33 1 3949 2183 Asia Pacific Tel.: 65 6549 6666