

4

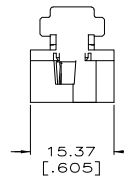
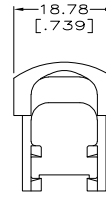
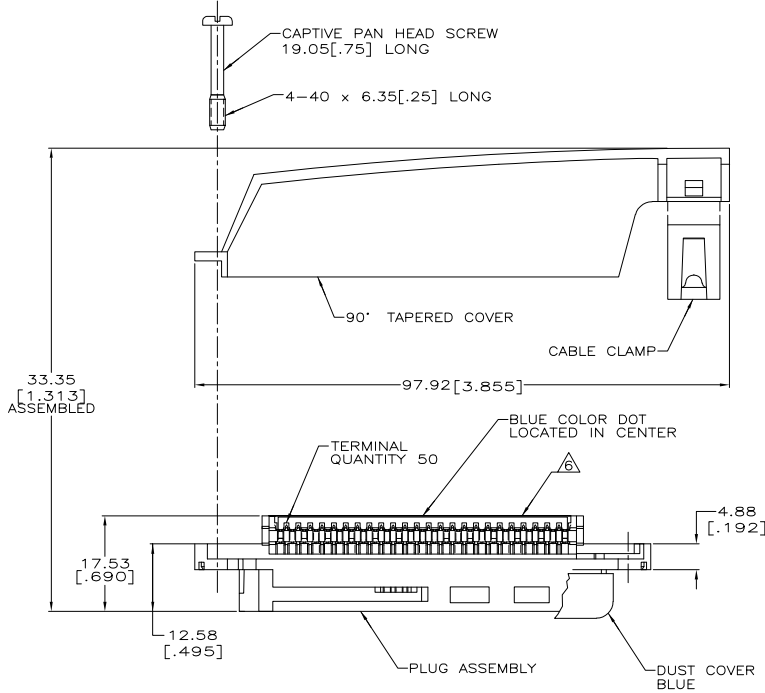
3

2

1

THIS DRAWING IS UNPUBLISHED.
 © COPYRIGHT BY TYCO ELECTRONICS CORPORATION. ALL RIGHTS RESERVED.

LOC	DIST	REVISIONS					
GP	00	F	LTR	DESCRIPTION	DATE	BY	APPD
		0		RELEASED PER EC 0513-0288-05	23SEP05	GP	JG



- THE CONTACT SURFACES OF THE TERMINALS ARE COATED WITH LUBRICANT.
- △ DIMENSIONS ARE MAXIMUM UNLESS OTHERWISE SPECIFIED.
- △ MATERIAL: HOUSING AND COVER - POLYPHENYLENE OXIDE.
CABLE CLAMP - POLYESTER MOLDING COMPOUND.
TERMINALS - GOLD OVER NICKEL PLATED HIGH STRENGTH COPPER ALLOY.
HARDWARE - ZINC PLATED STEEL.
DUST COVER - POLYETHYLENE MOLDING COMPOUND.
- THIS KIT SHIPPED NOT ASSEMBLED.
- WIRE SIZE: 24 & 26 AWG SOLID & 24/7 STRAND COPPER CONDUCTORS. MAXIMUM INSULATION DIAMETER OF 1.14 [.045] IS ACCEPTABLE FOR MOST APPLICATIONS.
- △ CORING MAY OR MAY NOT APPEAR AND IS AT THE DISCRETION OF AMP INCORPORATED.

PACKAGING	CABLE RANGE	DUST COVER	COLOR	PART NUMBER
BULK PACKED	ø7.62-8.26 [ø.300-.325]	YES	GRAY	6-5229912-4
	ø8.89-10.80 [ø.350-.425]	YES	BLACK	6-5229912-3
POLY BAGGED	ø10.80-12.70 [ø.425-.500]	NO	BLACK	6-5229912-1
		YES	BLACK	3-5229912-1
	ø8.89-10.80 [ø.350-.425]	NO	BLACK	2-5229912-1
		NO	GRAY	5229912-4
		NO	BLACK	5229912-1

THIS DRAWING IS A CONTROLLED DOCUMENT.		TYCO ELECTRONICS CORPORATION	
DIMENSIONS: mm [INCHES]	TO MANUFACTURE: AS SHOWN	DATE: 23SEP05	BY: G. PETERS
0 PLC	1	2	3
1 PLC	2	3	4
2 PLC	3	4	5
3 PLC	4	5	6
4 PLC	5	6	7
ANGLE	FINISH		
MATERIAL			
APPLIC. SPEC.	SIZE	CAGE CODE	DRAWING NO.
WEIGHT	A2	00779	C-5229912
CUSTOMER DRAWING	SCALE	2:1	SHEET 1 of 1 REV 0

AMP 1471-9 REV 31MAR2000

5229912

A