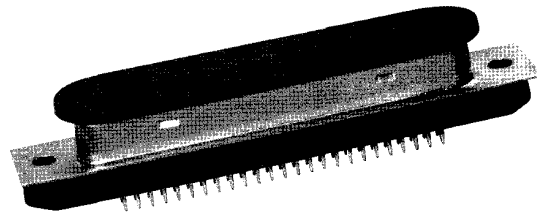
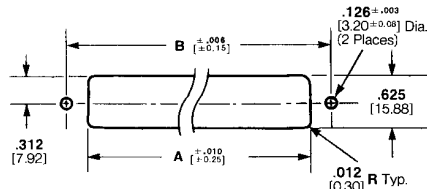


No. of Positions	Dimensions			Part Numbers	
	A	B	C	Plug	Receptacle
14	1.750	1.416	1.016	—	553443-1
	44.45	35.97	25.81		
24	2.175	1.842	1.442	553444-2	553443-2
	55.25	46.79	36.63		
36	2.685	2.352	1.952	553444-3	553443-3
	68.20	59.74	49.58		
50	3.280	2.946	2.546	553444-4	553443-4
	83.31	74.83	64.67	554758-11.2	554753-11
				557984-13	
64	3.875	3.542	3.142	553444-5	553443-5
	98.43	89.97	79.81		



- 1 Connector contains self retained terminals and net wt. = 15.946 g.
- 2 For capacitive filtered connector, order Part Number 93510-X.
- 3 Shielded for screw lock application.

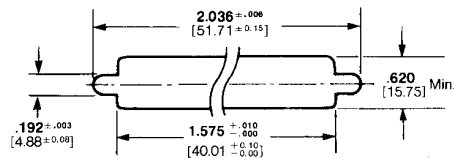
**Panel Cutout Dimensions (Rear Panel Mount)**



No. of Positions	Dimensions	
	A	B
14	1.151	1.416
	29.24	35.97
24	1.575 <sup>1</sup>	1.842
	40.01	46.79
36	2.085	2.352
	52.96	59.74
50	2.700	2.946
	68.58	74.83
64	3.275	3.542
	83.19	89.67

<sup>1</sup> See Panel Cutout for IEEE-488.

**Panel Cutout for 24-Position IEEE-488 Metric**

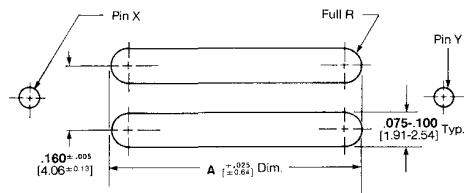


**Note:** Panel thickness range .062-.093 [1.57-2.36] for metric applications; .062 [1.57] for standard 4-40 hardware applications.

**ACTION PIN PC Board Nesting Fixture Requirements**

**Preferred Material:** G-10 or FR-4 glass filled epoxy, aluminum is acceptable.

**Note:** PC board slot pattern shall be true positioned on fixture within .010 [0.25] by pin X and pin Y. Pin location and size to be determined by customer. Minimum of .275 [6.99] slot depth minus customer board thickness.



No. of Positions	Dimension
	A
14	.625 15.88
24	1.050 26.67
36	1.560 39.62
50	2.155 54.74
64	2.750 69.85