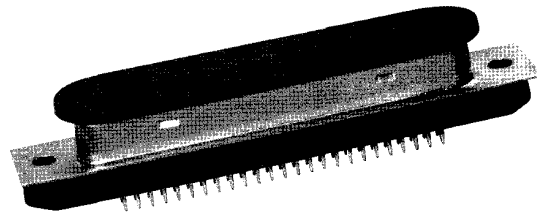
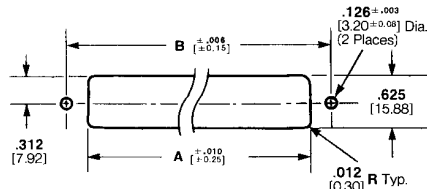


| No. of Positions | Dimensions | | | Part Numbers | |
|------------------|------------|-------|-------|--------------|------------|
| | A | B | C | Plug | Receptacle |
| 14 | 1.750 | 1.416 | 1.016 | — | 553443-1 |
| | 44.45 | 35.97 | 25.81 | | |
| 24 | 2.175 | 1.842 | 1.442 | 553444-2 | 553443-2 |
| | 55.25 | 46.79 | 36.63 | | |
| 36 | 2.685 | 2.352 | 1.952 | 553444-3 | 553443-3 |
| | 68.20 | 59.74 | 49.58 | | |
| 50 | 3.280 | 2.946 | 2.546 | 553444-4 | 553443-4 |
| | 83.31 | 74.83 | 64.67 | 554758-11.2 | 554753-11 |
| | | | | 557984-13 | |
| 64 | 3.875 | 3.542 | 3.142 | 553444-5 | 553443-5 |
| | 98.43 | 89.97 | 79.81 | | |



- 1 Connector contains self retained terminals and net wt. = 15.946 g.
- 2 For capacitive filtered connector, order Part Number 93510-X.
- 3 Shielded for screw lock application.

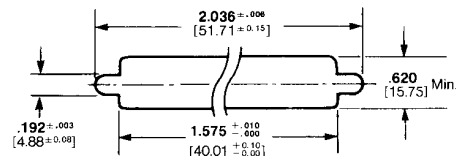
Panel Cutout Dimensions (Rear Panel Mount)



| No. of Positions | Dimensions | |
|------------------|--------------------|-------|
| | A | B |
| 14 | 1.151 | 1.416 |
| | 29.24 | 35.97 |
| 24 | 1.575 ¹ | 1.842 |
| | 40.01 | 46.79 |
| 36 | 2.085 | 2.352 |
| | 52.96 | 59.74 |
| 50 | 2.700 | 2.946 |
| | 68.58 | 74.83 |
| 64 | 3.275 | 3.542 |
| | 83.19 | 89.67 |

¹ See Panel Cutout for IEEE-488.

Panel Cutout for 24-Position IEEE-488 Metric

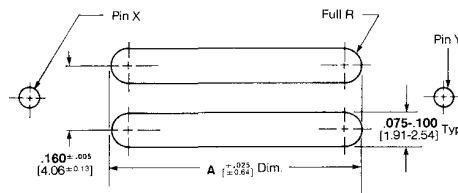


Note: Panel thickness range .062-.093 [1.57-2.36] for metric applications; .062 [1.57] for standard 4-40 hardware applications.

ACTION PIN PC Board Nesting Fixture Requirements

Preferred Material: G-10 or FR-4 glass filled epoxy, aluminum is acceptable.

Note: PC board slot pattern shall be true positioned on fixture within .010 [0.25] by pin X and pin Y. Pin location and size to be determined by customer. Minimum of .275 [6.99] slot depth minus customer board thickness.



| No. of Positions | Dimension |
|------------------|----------------|
| | A |
| 14 | .625 15.88 |
| 24 | 1.050 26.67 |
| 36 | 1.560 39.62 |
| 50 | 2.155 54.74 |
| 64 | 2.750 69.85 |