

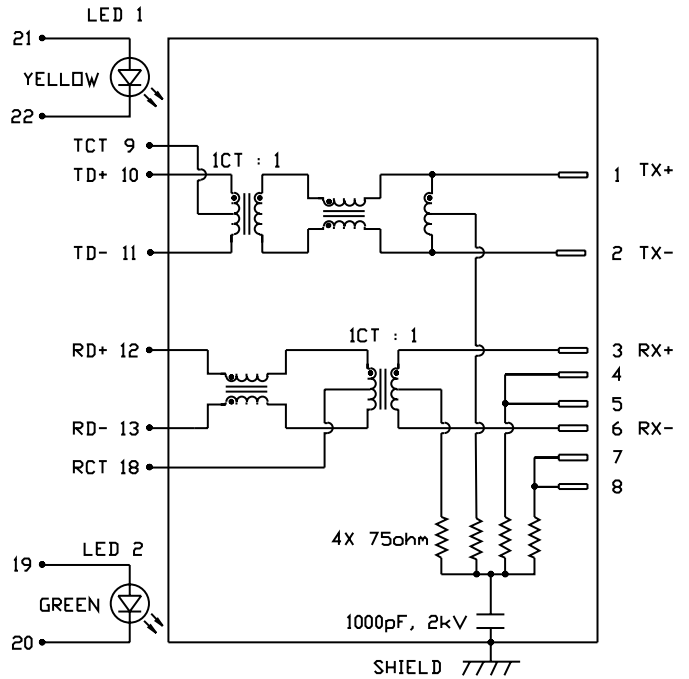
INTEGRATED CONNECTOR MODULES
0892-1DX1-60 10/100Base-TX Single Port MagJack® with LEDs

LED1 POLARITY			LED2 POLARITY		
PIN 21	PIN 22	COLOR	PIN 19	PIN 20	COLOR
+	-	YELLOW	+	-	GREEN

ELECTRICAL CHARACTERISTICS @ 25°C

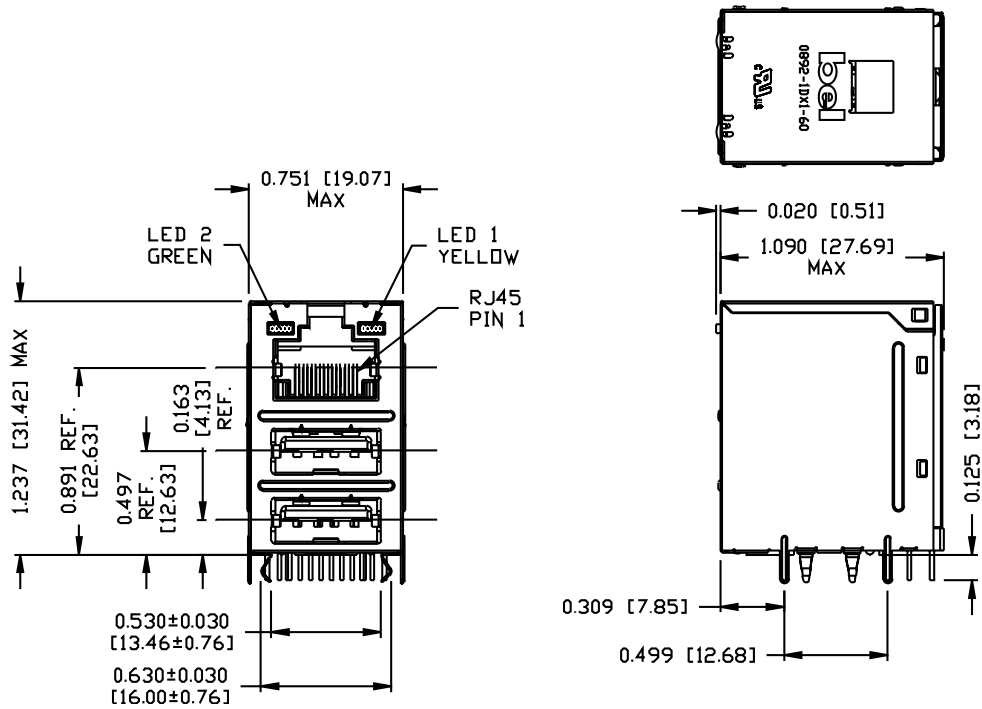
URNS RATIO TX RX	ICT : 1 ICT : 1
DCL @ 100kHz/100mVRMS 8mA DC BIAS	350µH MIN.
INS. LOSS 1MHz TO 100MHz	-1.0 dB MAX
RET. LOSS (MIN) 1MHz-30MHz 30MHz-60MHz 60MHz-80MHz	-18 dB -18+20LOG(F/30MHz) dB -12 dB
CROSS TALK (TX - RX) 100kHz-100MHz	-35 dB MIN
CM TO CM REJ 100kHz-100MHz	-30 dB MIN
CM TO DM REJ 100kHz-100MHz	-35 dB MIN
HIPOT (Isolation Voltage):	1500 Vrms
LED 1 VF (FORWARD VOLTAGE) λD (DOMINANT WAVELENGTH)	IF=20mA YELLOW 2.1V TYP. IF=20mA YELLOW 590nm TYP.
LED 2 VF (FORWARD VOLTAGE) λD (DOMINANT WAVELENGTH)	IF=20mA GREEN 2.2V TYP. IF=20mA GREEN 565nm TYP.
USB ELECTRICAL: INSULATION RESISTANCE: CONTACT RESISTANCE: DIELECTRIC WITHSTANDING:	1000 MEG Ω (MIN) 25 MILLI Ω (MAX) 750 VAC

SCHEMATIC



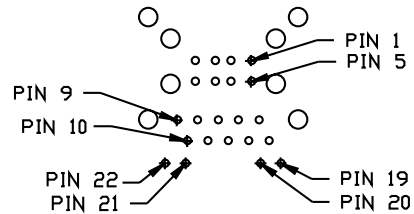
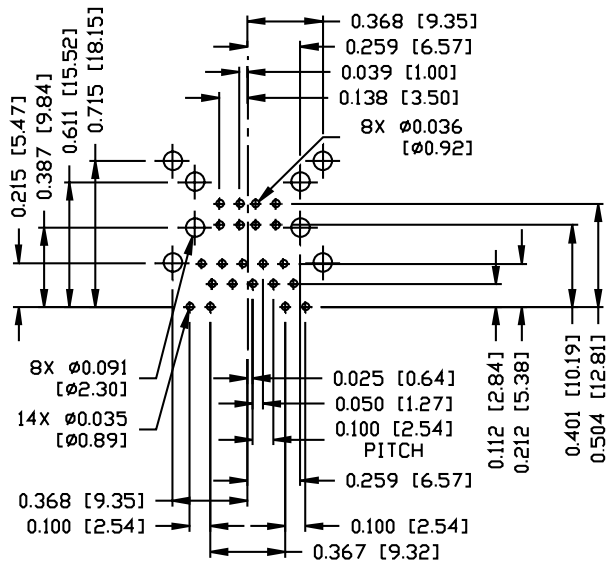
INTEGRATED CONNECTOR MODULES
0892-1DX1-60 10/100Base-TX Single Port MagJack® with LEDs

MECHANICAL SPECIFICATION



INTEGRATED CONNECTOR MODULES
0892-1DX1-60 10/100Base-TX Single Port MagJack® with LEDs

Recommended PCB footprint
 Component Side

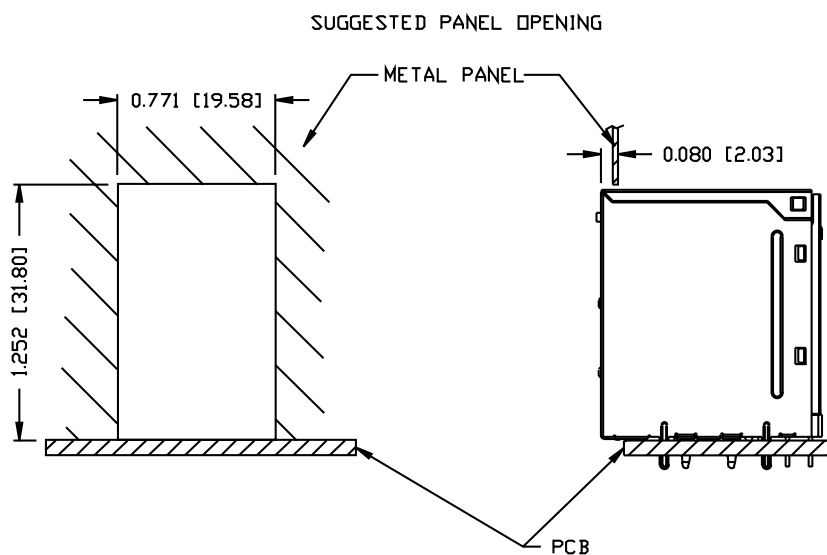


RJ45 MECHANICAL:
 PLASTIC HOUSING: THERMOPLASTIC PBT
 FLAMMABILITY RATING UL 94V-0
 CONTACTS PLATING: 30 MICRO-INCH HARD GOLD PLATING
 PINS: TIN-COATED COPPER WIRE, DIA 0.018 INCH.
 SOLDERABILITY: PER MIL STD. 202, METHOD 208.
 METAL SHIELD: TIN/LEAD PLATED ON COPPER ALLOY,

USB MECHANICAL:
 MATING FORCE: 35 NEWTONS MAXIMUM
 UNMATING FORCE: 10 NEWTONS MINIMUM
 CONTACTS PLATING: PROSPER BRONZE, GOLD PLATING ON CONTACT AREA AND TIN ON SOLDER TAIL.

UL RECOGNIZED - FILE #E196366 AND E169987.

INTEGRATED CONNECTOR MODULES
0892-1DX1-60 10/100Base-TX Single Port MagJack® with LEDs



NOTE:

THE DISTANCE OF PANEL INSIDE SURFACE RELATIVE TO FRONT SURFACE OF PART IS ONLY A SUGGESTION. IN CASE THIS DISTANCE IS DIFFERENT, THE REQUIRED PANEL OPENING DIMENSIONS CHANGE ACCORDINGLY.

PACKING INFORMATION

PACKING TRAY : 0200-0148-41 (BOTTOM)
 0200-0148-42 (TOP)

PACKING QUANTITY : 35 PCS FINISHED GOODS PER TRAY
 10 TRAY (350 PCS FINISHED GOODS) PER CARTON BOX

NOTE : CARDBOARDS ARE PLACED BETWEEN LAYERS OF PACKING TRAY INSIDE CARTON BOX
 (INCLUDE THE UPPERMOST AND LOWERMOST TRAY)