

4

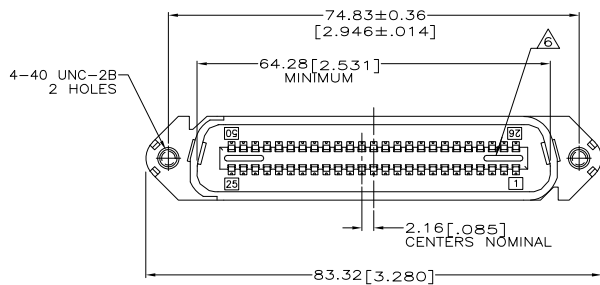
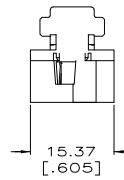
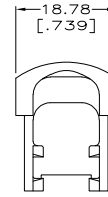
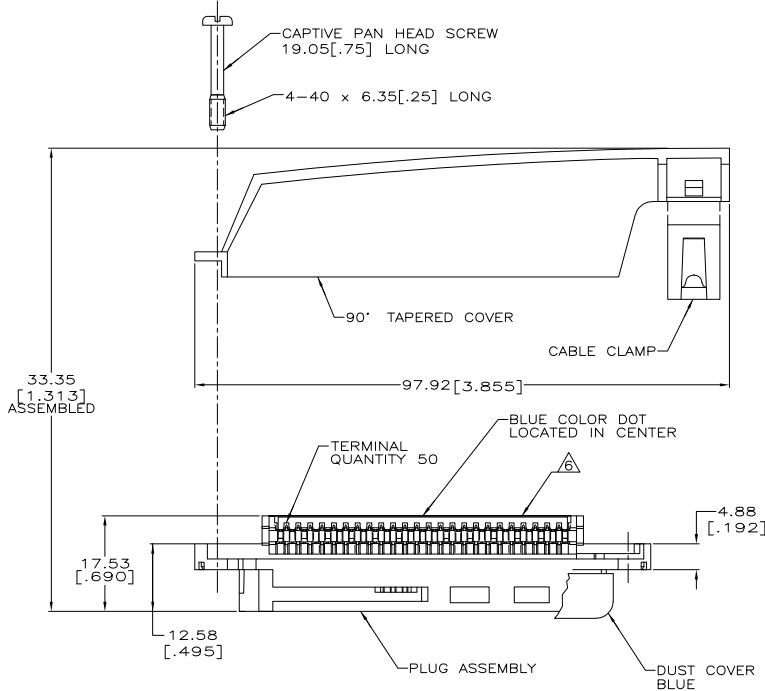
3

2

1

THIS DRAWING IS UNPUBLISHED.
 © COPYRIGHT BY TYCO ELECTRONICS CORPORATION. ALL RIGHTS RESERVED.

LOC	DIST	REVISIONS					
GP	00	F	LTR	DESCRIPTION	DATE	BY	APPD
		0		RELEASED PER EC 0513-0288-05	23SEP05	GP	JG



1. THE CONTACT SURFACES OF THE TERMINALS ARE COATED WITH LUBRICANT.
 2. DIMENSIONS ARE MAXIMUM UNLESS OTHERWISE SPECIFIED.
 3. MATERIAL: HOUSING AND COVER - POLYPHENYLENE OXIDE.
CABLE CLAMP - POLYESTER MOLDING COMPOUND.
TERMINALS - GOLD OVER NICKEL PLATED HIGH STRENGTH COPPER ALLOY.
HARDWARE - ZINC PLATED STEEL.
DUST COVER - POLYETHYLENE MOLDING COMPOUND.
 4. THIS KIT SHIPPED NOT ASSEMBLED.
 5. WIRE SIZE: 24 & 26 AWG SOLID & 24/7 STRAND COPPER CONDUCTORS. MAXIMUM INSULATION DIAMETER OF 1.14 [.045] IS ACCEPTABLE FOR MOST APPLICATIONS.
- △ CORING MAY OR MAY NOT APPEAR AND IS AT THE DISCRETION OF AMP INCORPORATED.

PACKAGING	CABLE RANGE	DUST COVER	COLOR	PART NUMBER
BULK PACKED	ø7.62-8.26 [ø.300-.325]	YES	GRAY	6-5229912-4
	ø8.89-10.80 [ø.350-.425]	YES	BLACK	6-5229912-3
POLY BAGGED	ø10.80-12.70 [ø.425-.500]	NO	BLACK	6-5229912-1
		YES	BLACK	3-5229912-1
	ø8.89-10.80 [ø.350-.425]	NO	BLACK	2-5229912-1
		NO	GRAY	5229912-4
		NO	BLACK	5229912-1

THIS DRAWING IS A CONTROLLED DOCUMENT.		TYCO ELECTRONICS CORPORATION	
DIMENSIONS: mm [INCHES]	TO MANUFACTURE AND ASSEMBLE TO THESE DIMENSIONS, UNLESS OTHERWISE SPECIFIED:	DATE: 23SEP05	BY: G. PETERS
0 PLC ± .15	1 PLC ± .10	DATE: 23SEP05	BY: W. MILLIHAMES
2 PLC ± .075	3 PLC ± .05	DATE: 23SEP05	BY: M. WALMSLEY
4 PLC ± .025	5 PLC ± .015	DATE: 23SEP05	BY: M. WALMSLEY
6 PLC ± .01	7 PLC ± .005	DATE: 23SEP05	BY: M. WALMSLEY
8 PLC ± .005	9 PLC ± .0025	DATE: 23SEP05	BY: M. WALMSLEY
ANGLES ± .5°	FINISH	APPLICATION SPEC:	PRODUCT SPEC:
MATERIAL:	FINISH:	WEIGHT:	RESTRICTED TO:
CUSTOMER DRAWING		SIZE: A2	CAGE CODE: 00779
		DRAWING NO: C-5229912	SCALE: 2:1
		SHEET: 1 of 1	REV: 0

AMP 1471-9 REV 31MAR2000

5229912

B

A