

4

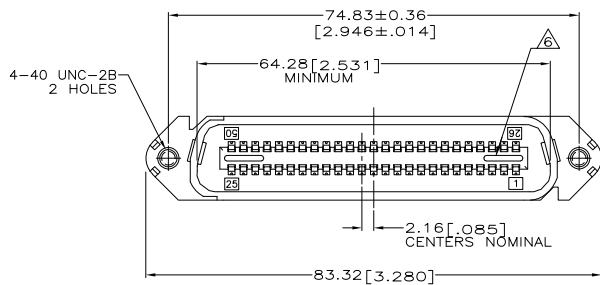
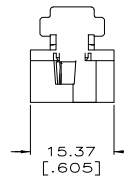
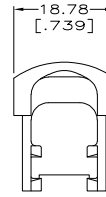
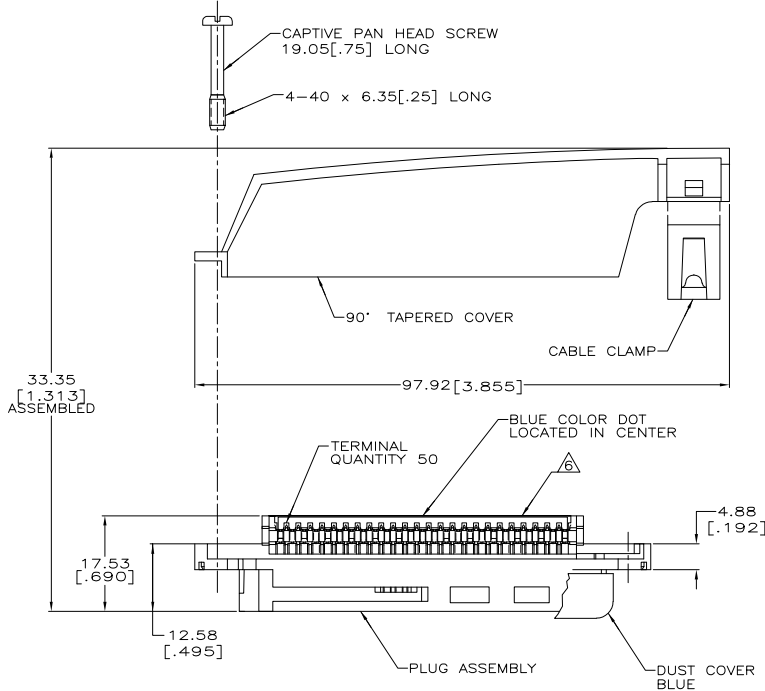
3

2

1

THIS DRAWING IS UNPUBLISHED.  
 © COPYRIGHT BY TYCO ELECTRONICS CORPORATION. ALL RIGHTS RESERVED.

| LOC | DIST | REVISIONS |     |                              |         |    |      |
|-----|------|-----------|-----|------------------------------|---------|----|------|
| GP  | 00   | F         | LTR | DESCRIPTION                  | DATE    | BY | APPD |
|     |      | 0         |     | RELEASED PER EC 0513-0288-05 | 23SEP05 | GP | JG   |



- THE CONTACT SURFACES OF THE TERMINALS ARE COATED WITH LUBRICANT.
- △ DIMENSIONS ARE MAXIMUM UNLESS OTHERWISE SPECIFIED.
- △ MATERIAL: HOUSING AND COVER - POLYPHENYLENE OXIDE.  
CABLE CLAMP - POLYESTER MOLDING COMPOUND.  
TERMINALS - GOLD OVER NICKEL PLATED HIGH STRENGTH COPPER ALLOY.  
HARDWARE - ZINC PLATED STEEL.  
DUST COVER - POLYETHYLENE MOLDING COMPOUND.
- THIS KIT SHIPPED NOT ASSEMBLED.
- WIRE SIZE: 24 & 26 AWG SOLID & 24/7 STRAND COPPER CONDUCTORS. MAXIMUM INSULATION DIAMETER OF 1.14 [.045] IS ACCEPTABLE FOR MOST APPLICATIONS.
- △ CORING MAY OR MAY NOT APPEAR AND IS AT THE DISCRETION OF AMP INCORPORATED.

| PACKAGING   | CABLE RANGE               | DUST COVER | COLOR | PART NUMBER |
|-------------|---------------------------|------------|-------|-------------|
|             |                           |            |       |             |
| BULK PACKED | ø7.62-8.26 [ø.300-.325]   | YES        | GRAY  | 6-5229912-4 |
|             | ø8.89-10.80 [ø.350-.425]  | YES        | BLACK | 6-5229912-3 |
| POLY BAGGED | ø10.80-12.70 [ø.425-.500] | NO         | BLACK | 6-5229912-1 |
|             |                           | YES        | BLACK | 3-5229912-1 |
|             | ø8.89-10.80 [ø.350-.425]  | NO         | BLACK | 2-5229912-1 |
|             |                           | NO         | GRAY  | 1-5229912-1 |
|             |                           | NO         | BLACK | 5229912-1   |

| THIS DRAWING IS A CONTROLLED DOCUMENT. |                          | TYCO ELECTRONICS CORPORATION |               |
|--|--------------------------|------------------------------|---------------|
| DIMENSIONS: mm [INCHES]                | TO MANUFACTURE: AS SHOWN | DATE: 23SEP05                | BY: G. PETERS |
| 0 PLC                                  | 1 PLC                    | 2 PLC                        | 3 PLC         |
| 4 PLC                                  | 5 PLC                    | 6 PLC                        | 7 PLC         |
| 8 PLC                                  | 9 PLC                    | 10 PLC                       | 11 PLC        |
| 12 PLC                                 | 13 PLC                   | 14 PLC                       | 15 PLC        |
| 16 PLC                                 | 17 PLC                   | 18 PLC                       | 19 PLC        |
| 20 PLC                                 | 21 PLC                   | 22 PLC                       | 23 PLC        |
| 24 PLC                                 | 25 PLC                   | 26 PLC                       | 27 PLC        |
| 28 PLC                                 | 29 PLC                   | 30 PLC                       | 31 PLC        |
| 32 PLC                                 | 33 PLC                   | 34 PLC                       | 35 PLC        |
| 36 PLC                                 | 37 PLC                   | 38 PLC                       | 39 PLC        |
| 40 PLC                                 | 41 PLC                   | 42 PLC                       | 43 PLC        |
| 44 PLC                                 | 45 PLC                   | 46 PLC                       | 47 PLC        |
| 48 PLC                                 | 49 PLC                   | 50 PLC                       | 51 PLC        |
| 52 PLC                                 | 53 PLC                   | 54 PLC                       | 55 PLC        |
| 56 PLC                                 | 57 PLC                   | 58 PLC                       | 59 PLC        |
| 60 PLC                                 | 61 PLC                   | 62 PLC                       | 63 PLC        |
| 64 PLC                                 | 65 PLC                   | 66 PLC                       | 67 PLC        |
| 68 PLC                                 | 69 PLC                   | 70 PLC                       | 71 PLC        |
| 72 PLC                                 | 73 PLC                   | 74 PLC                       | 75 PLC        |
| 76 PLC                                 | 77 PLC                   | 78 PLC                       | 79 PLC        |
| 80 PLC                                 | 81 PLC                   | 82 PLC                       | 83 PLC        |
| 84 PLC                                 | 85 PLC                   | 86 PLC                       | 87 PLC        |
| 88 PLC                                 | 89 PLC                   | 90 PLC                       | 91 PLC        |
| 92 PLC                                 | 93 PLC                   | 94 PLC                       | 95 PLC        |
| 96 PLC                                 | 97 PLC                   | 98 PLC                       | 99 PLC        |
| 100 PLC                                | 101 PLC                  | 102 PLC                      | 103 PLC       |
| 104 PLC                                | 105 PLC                  | 106 PLC                      | 107 PLC       |
| 108 PLC                                | 109 PLC                  | 110 PLC                      | 111 PLC       |
| 112 PLC                                | 113 PLC                  | 114 PLC                      | 115 PLC       |
| 116 PLC                                | 117 PLC                  | 118 PLC                      | 119 PLC       |
| 120 PLC                                | 121 PLC                  | 122 PLC                      | 123 PLC       |
| 124 PLC                                | 125 PLC                  | 126 PLC                      | 127 PLC       |
| 128 PLC                                | 129 PLC                  | 130 PLC                      | 131 PLC       |
| 132 PLC                                | 133 PLC                  | 134 PLC                      | 135 PLC       |
| 136 PLC                                | 137 PLC                  | 138 PLC                      | 139 PLC       |
| 140 PLC                                | 141 PLC                  | 142 PLC                      | 143 PLC       |
| 144 PLC                                | 145 PLC                  | 146 PLC                      | 147 PLC       |
| 148 PLC                                | 149 PLC                  | 150 PLC                      | 151 PLC       |
| 152 PLC                                | 153 PLC                  | 154 PLC                      | 155 PLC       |
| 156 PLC                                | 157 PLC                  | 158 PLC                      | 159 PLC       |
| 160 PLC                                | 161 PLC                  | 162 PLC                      | 163 PLC       |
| 164 PLC                                | 165 PLC                  | 166 PLC                      | 167 PLC       |
| 168 PLC                                | 169 PLC                  | 170 PLC                      | 171 PLC       |
| 172 PLC                                | 173 PLC                  | 174 PLC                      | 175 PLC       |
| 176 PLC                                | 177 PLC                  | 178 PLC                      | 179 PLC       |
| 180 PLC                                | 181 PLC                  | 182 PLC                      | 183 PLC       |
| 184 PLC                                | 185 PLC                  | 186 PLC                      | 187 PLC       |
| 188 PLC                                | 189 PLC                  | 190 PLC                      | 191 PLC       |
| 192 PLC                                | 193 PLC                  | 194 PLC                      | 195 PLC       |
| 196 PLC                                | 197 PLC                  | 198 PLC                      | 199 PLC       |
| 200 PLC                                | 201 PLC                  | 202 PLC                      | 203 PLC       |
| 204 PLC                                | 205 PLC                  | 206 PLC                      | 207 PLC       |
| 208 PLC                                | 209 PLC                  | 210 PLC                      | 211 PLC       |
| 212 PLC                                | 213 PLC                  | 214 PLC                      | 215 PLC       |
| 216 PLC                                | 217 PLC                  | 218 PLC                      | 219 PLC       |
| 220 PLC                                | 221 PLC                  | 222 PLC                      | 223 PLC       |
| 224 PLC                                | 225 PLC                  | 226 PLC                      | 227 PLC       |
| 228 PLC                                | 229 PLC                  | 230 PLC                      | 231 PLC       |
| 232 PLC                                | 233 PLC                  | 234 PLC                      | 235 PLC       |
| 236 PLC                                | 237 PLC                  | 238 PLC                      | 239 PLC       |
| 240 PLC                                | 241 PLC                  | 242 PLC                      | 243 PLC       |
| 244 PLC                                | 245 PLC                  | 246 PLC                      | 247 PLC       |
| 248 PLC                                | 249 PLC                  | 250 PLC                      | 251 PLC       |
| 252 PLC                                | 253 PLC                  | 254 PLC                      | 255 PLC       |
| 256 PLC                                | 257 PLC                  | 258 PLC                      | 259 PLC       |
| 260 PLC                                | 261 PLC                  | 262 PLC                      | 263 PLC       |
| 264 PLC                                | 265 PLC                  | 266 PLC                      | 267 PLC       |
| 268 PLC                                | 269 PLC                  | 270 PLC                      | 271 PLC       |
| 272 PLC                                | 273 PLC                  | 274 PLC                      | 275 PLC       |
| 276 PLC                                | 277 PLC                  | 278 PLC                      | 279 PLC       |
| 280 PLC                                | 281 PLC                  | 282 PLC                      | 283 PLC       |
| 284 PLC                                | 285 PLC                  | 286 PLC                      | 287 PLC       |
| 288 PLC                                | 289 PLC                  | 290 PLC                      | 291 PLC       |
| 292 PLC                                | 293 PLC                  | 294 PLC                      | 295 PLC       |
| 296 PLC                                | 297 PLC                  | 298 PLC                      | 299 PLC       |
| 300 PLC                                | 301 PLC                  | 302 PLC                      | 303 PLC       |
| 304 PLC                                | 305 PLC                  | 306 PLC                      | 307 PLC       |
| 308 PLC                                | 309 PLC                  | 310 PLC                      | 311 PLC       |
| 312 PLC                                | 313 PLC                  | 314 PLC                      | 315 PLC       |
| 316 PLC                                | 317 PLC                  | 318 PLC                      | 319 PLC       |
| 320 PLC                                | 321 PLC                  | 322 PLC                      | 323 PLC       |
| 324 PLC                                | 325 PLC                  | 326 PLC                      | 327 PLC       |
| 328 PLC                                | 329 PLC                  | 330 PLC                      | 331 PLC       |
| 332 PLC                                | 333 PLC                  | 334 PLC                      | 335 PLC       |
| 336 PLC                                | 337 PLC                  | 338 PLC                      | 339 PLC       |
| 340 PLC                                | 341 PLC                  | 342 PLC                      | 343 PLC       |
| 344 PLC                                | 345 PLC                  | 346 PLC                      | 347 PLC       |
| 348 PLC                                | 349 PLC                  | 350 PLC                      | 351 PLC       |
| 352 PLC                                | 353 PLC                  | 354 PLC                      | 355 PLC       |
| 356 PLC                                | 357 PLC                  | 358 PLC                      | 359 PLC       |
| 360 PLC                                | 361 PLC                  | 362 PLC                      | 363 PLC       |
| 364 PLC                                | 365 PLC                  | 366 PLC                      | 367 PLC       |
| 368 PLC                                | 369 PLC                  | 370 PLC                      | 371 PLC       |
| 372 PLC                                | 373 PLC                  | 374 PLC                      | 375 PLC       |
| 376 PLC                                | 377 PLC                  | 378 PLC                      | 379 PLC       |
| 380 PLC                                | 381 PLC                  | 382 PLC                      | 383 PLC       |
| 384 PLC                                | 385 PLC                  | 386 PLC                      | 387 PLC       |
| 388 PLC                                | 389 PLC                  | 390 PLC                      | 391 PLC       |
| 392 PLC                                | 393 PLC                  | 394 PLC                      | 395 PLC       |
| 396 PLC                                | 397 PLC                  | 398 PLC                      | 399 PLC       |
| 400 PLC                                | 401 PLC                  | 402 PLC                      | 403 PLC       |
| 404 PLC                                | 405 PLC                  | 406 PLC                      | 407 PLC       |
| 408 PLC                                | 409 PLC                  | 410 PLC                      | 411 PLC       |
| 412 PLC                                | 413 PLC                  | 414 PLC                      | 415 PLC       |
| 416 PLC                                | 417 PLC                  | 418 PLC                      | 419 PLC       |
| 420 PLC                                | 421 PLC                  | 422 PLC                      | 423 PLC       |
| 424 PLC                                | 425 PLC                  | 426 PLC                      | 427 PLC       |
| 428 PLC                                | 429 PLC                  | 430 PLC                      | 431 PLC       |
| 432 PLC                                | 433 PLC                  | 434 PLC                      | 435 PLC       |
| 436 PLC                                | 437 PLC                  | 438 PLC                      | 439 PLC       |
| 440 PLC                                | 441 PLC                  | 442 PLC                      | 443 PLC       |
| 444 PLC                                | 445 PLC                  | 446 PLC                      | 447 PLC       |
| 448 PLC                                | 449 PLC                  | 450 PLC                      | 451 PLC       |
| 452 PLC                                | 453 PLC                  | 454 PLC                      | 455 PLC       |
| 456 PLC                                | 457 PLC                  | 458 PLC                      | 459 PLC       |
| 460 PLC                                | 461 PLC                  | 462 PLC                      | 463 PLC       |
| 464 PLC                                | 465 PLC                  | 466 PLC                      | 467 PLC       |
| 468 PLC                                | 469 PLC                  | 470 PLC                      | 471 PLC       |
| 472 PLC                                | 473 PLC                  | 474 PLC                      | 475 PLC       |
| 476 PLC                                | 477 PLC                  | 478 PLC                      | 479 PLC       |
| 480 PLC                                | 481 PLC                  | 482 PLC                      | 483 PLC       |
| 484 PLC                                | 485 PLC                  | 486 PLC                      | 487 PLC       |
| 488 PLC                                | 489 PLC                  | 490 PLC                      | 491 PLC       |
| 492 PLC                                | 493 PLC                  | 494 PLC                      | 495 PLC       |
| 496 PLC                                | 497 PLC                  | 498 PLC                      | 499 PLC       |
| 500 PLC                                | 501 PLC                  | 502 PLC                      | 503 PLC       |
| 504 PLC                                | 505 PLC                  | 506 PLC                      | 507 PLC       |
| 508 PLC                                | 509 PLC                  | 510 PLC                      | 511 PLC       |
| 512 PLC                                | 513 PLC                  | 514 PLC                      | 515 PLC       |
| 516 PLC                                | 517 PLC                  | 518 PLC                      | 519 PLC       |
| 520 PLC                                | 521 PLC                  | 522 PLC                      | 523 PLC       |
| 524 PLC                                | 525 PLC                  | 526 PLC                      | 527 PLC       |
| 528 PLC                                | 529 PLC                  | 530 PLC                      | 531 PLC       |
| 532 PLC                                | 533 PLC                  | 534 PLC                      | 535 PLC       |
| 536 PLC                                | 537 PLC                  | 538 PLC                      | 539 PLC       |
| 540 PLC                                | 541 PLC                  | 542 PLC                      | 543 PLC       |
| 544 PLC                                | 545 PLC                  | 546 PLC                      | 547 PLC       |
| 548 PLC                                | 549 PLC                  | 550 PLC                      | 551 PLC       |
| 552 PLC                                | 553 PLC                  | 554 PLC                      | 555 PLC       |
| 556 PLC                                | 557 PLC                  | 558 PLC                      | 559 PLC       |
| 560 PLC                                | 561 PLC                  | 562 PLC                      | 563 PLC       |
| 564 PLC                                | 565 PLC                  | 566 PLC                      | 567 PLC       |
| 568 PLC                                | 569 PLC                  | 570 PLC                      | 571 PLC       |
| 572 PLC                                | 573 PLC                  | 574 PLC                      | 575 PLC       |
| 576 PLC                                | 577 PLC                  | 578 PLC                      | 579 PLC       |
| 580 PLC                                | 581 PLC                  | 582 PLC                      | 583 PLC       |
| 584 PLC                                | 585 PLC                  | 586 PLC                      | 587 PLC       |
| 588 PLC                                | 589 PLC                  | 590 PLC                      | 591 PLC       |
| 592 PLC                                | 593 PLC                  | 594 PLC                      | 595 PLC       |
| 596 PLC                                | 597 PLC                  | 598 PLC                      | 599 PLC       |
| 600 PLC                                | 601 PLC                  | 602 PLC                      | 603 PLC       |
| 604 PLC                                | 605 PLC                  | 606 PLC                      | 607 PLC       |
| 608 PLC                                | 609 PLC                  | 610 PLC                      | 611 PLC       |
| 612 PLC                                | 613 PLC                  | 614 PLC                      | 615 PLC       |
| 616 PLC                                | 617 PLC                  | 618 PLC                      | 619 PLC       |
| 620 PLC                                | 621 PLC                  | 622 PLC                      | 623 PLC       |
| 624 PLC                                | 625 PLC                  | 626 PLC                      | 627 PLC       |
| 628 PLC                                | 629 PLC                  | 630 PLC                      | 631 PLC       |
| 632 PLC                                | 633 PLC                  | 634 PLC                      | 635 PLC       |
| 636 PLC                                | 637 PLC                  | 638 PLC                      | 639 PLC       |
| 640 PLC                                | 641 PLC                  | 642 PLC                      | 643 PLC       |
| 644 PLC                                | 645 PLC                  | 646 PLC                      | 647 PLC       |
| 648 PLC                                | 649 PLC                  | 650 PLC                      | 651 PLC       |
| 652 PLC                                | 653 PLC                  | 654 PLC                      | 655 PLC       |
| 656 PLC                                | 657 PLC                  | 658 PLC                      | 659 PLC       |
| 660 PLC                                | 661 PLC                  | 662 PLC                      | 663 PLC       |
| 664 PLC                                | 665 PLC                  | 666 PLC                      | 667 PLC       |
| 668 PLC                                | 669 PLC                  | 670 PLC                      | 671 PLC       |
| 672 PLC                                | 673 PLC                  | 674 PLC                      | 675 PLC       |
| 676 PLC                                | 677 PLC                  | 678 PLC                      | 679 PLC       |
| 680 PLC                                | 681 PLC                  | 682 PLC                      | 683 PLC       |
| 684 PLC                                | 685 PLC                  | 686 PLC                      | 687 PLC       |
| 688 PLC                                | 689 PLC                  | 690 PLC                      | 691 PLC       |
| 692 PLC                                | 693 PLC                  | 694 PLC                      | 695 PLC       |
| 696 PLC                                | 697 PLC                  | 698 PLC                      | 699 PLC       |
| 700 PLC                                | 701 PLC                  | 702 PLC                      | 703 PLC       |
| 704 PLC                                | 705 PLC                  | 706 PLC                      | 707 PLC       |
| 708 PLC                                | 709 PLC                  | 710 PLC                      | 711 PLC       |
| 712 PLC                                | 713 PLC                  | 714 PLC                      | 715 PLC       |
| 716 PLC                                | 717 PLC                  | 718 PLC                      | 719 PLC       |
| 720 PLC                                | 721 PLC                  | 722 PLC                      | 723 PLC       |
| 724 PLC                                | 725 PLC                  | 726 PLC                      | 727 PLC       |
| 728 PLC                                | 729 PLC                  | 730 PLC                      | 731 PLC       |
| 732 PLC                                | 733 PLC                  | 734 PLC                      | 735 PLC       |
| 736 PLC                                | 737 PLC                  | 738 PLC                      | 739 PLC       |
| 740 PLC                                | 741 PLC                  | 742 PLC                      | 743 PLC       |
| 744 PLC                                | 745 PLC                  | 746 PLC                      | 747 PLC       |
| 748 PLC                                | 749 PLC                  | 750 PLC                      | 751 PLC       |
| 752 PLC                                | 753 PLC                  | 754 PLC                      | 755 PLC       |
| 756 PLC                                | 757 PLC                  | 758 PLC                      | 759 PLC       |
| 760 PLC                                | 761 PLC                  | 762 PLC                      | 763 PLC       |
| 764 PLC                                | 765 PLC                  | 766 PLC                      | 767 PLC       |
| 768 PLC                                | 769 PLC                  | 770 PLC                      | 771 PLC       |
| 772 PLC                                | 773 PLC                  | 774 PLC                      | 775 PLC       |
| 776 PLC                                | 777 PLC                  | 778 PLC                      | 779 PLC       |
| 780 PLC                                | 781 PLC                  | 782 PLC                      | 783 PLC       |
| 784 PLC                                | 785 PLC                  | 786 PLC                      | 787 PLC       |
| 788 PLC                                | 789 PLC                  | 790 PLC                      | 791 PLC       |
| 792 PLC                                | 793 PLC                  | 794 PLC                      | 795 PLC       |
| 796 PLC                                | 797 PLC                  | 798 PLC                      | 799 PLC       |
| 800 PLC                                | 801 PLC                  | 802 PLC                      | 803 PLC       |
| 804 PLC                                | 805 PLC                  | 806 PLC                      | 807 PLC       |
| 808 PLC                                | 809 PLC                  | 810 PLC                      | 811 PLC       |
| 812 PLC                                | 813 PLC                  | 814 PLC                      | 815 PLC       |
| 816 PLC                                | 817 PLC                  | 818 PLC                      | 819 PLC       |
| 820 PLC                                | 821 PLC                  | 822 PLC                      | 823 PLC       |
| 824 PLC                                | 825 PLC                  | 826 PLC                      | 827 PLC       |
| 828 PLC                                | 829 PLC                  | 830 PLC                      | 831 PLC       |
| 832 PLC                                | 833 PLC                  | 834 PLC                      | 835 PLC       |
| 836 PLC                                | 837 PLC                  | 838 PLC                      | 839 PLC       |
| 840 PLC                                | 841 PLC                  | 842 PLC                      | 843 PLC       |
| 844 PLC                                | 845 PLC                  | 846 PLC                      | 847 PLC       |
| 848 PLC                                | 849 PLC                  | 850 PLC                      | 851 PLC       |
| 852 PLC                                | 853 PLC                  | 854 PLC                      | 855 PLC       |
| 856 PLC                                | 857 PLC                  | 858 PLC                      | 859 PLC       |
| 860 PLC                                | 861 PLC                  | 862 PLC                      | 863 PLC       |
| 864 PLC                                | 865 PLC                  | 866 PLC                      | 867 PLC       |
| 868 PLC                                | 869 PLC                  | 870 PLC                      | 871 PLC       |
| 872 PLC                                | 873 PLC                  | 874 PLC                      | 875 PLC       |
| 876 PLC                                | 877 PLC                  | 878 PLC                      | 879 PLC       |
| 880 PLC                                | 881 PLC                  | 882 PLC                      | 883 PLC       |
| 884 PLC                                | 885 PLC                  | 886 PLC                      | 887 PLC       |
| 888 PLC                                | 889 PLC                  | 890 PLC                      | 891 PLC       |
| 892 PLC                                | 893 PLC                  | 894 PLC                      | 895 PLC       |
| 896 PLC                                | 8                        |                              |               |