

4

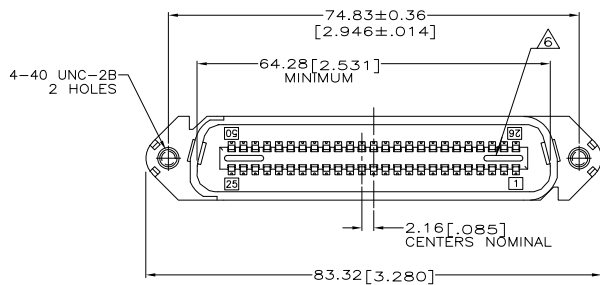
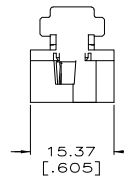
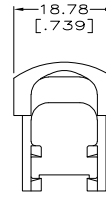
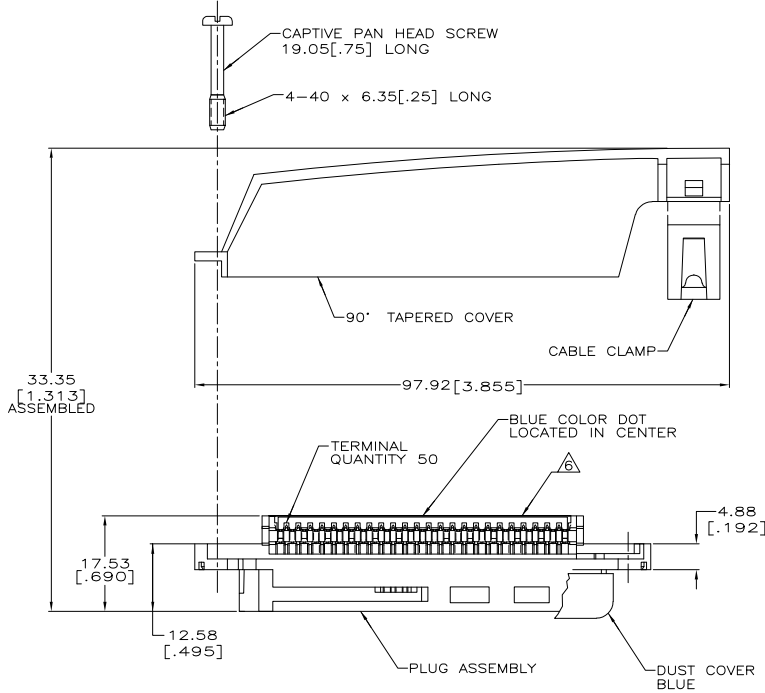
3

2

1

THIS DRAWING IS UNPUBLISHED.
 © COPYRIGHT BY TYCO ELECTRONICS CORPORATION. ALL RIGHTS RESERVED.

LOC	DIST	REVISIONS					
GP	00	F	LTR	DESCRIPTION	DATE	BY	APPD
		0		RELEASED PER EC 0513-0288-05	23SEP05	GP	JG



- THE CONTACT SURFACES OF THE TERMINALS ARE COATED WITH LUBRICANT.
- △ DIMENSIONS ARE MAXIMUM UNLESS OTHERWISE SPECIFIED.
- △ MATERIAL: HOUSING AND COVER - POLYPHENYLENE OXIDE.
CABLE CLAMP - POLYESTER MOLDING COMPOUND.
TERMINALS - GOLD OVER NICKEL PLATED HIGH STRENGTH COPPER ALLOY.
HARDWARE - ZINC PLATED STEEL.
DUST COVER - POLYETHYLENE MOLDING COMPOUND.
- THIS KIT SHIPPED NOT ASSEMBLED.
- WIRE SIZE: 24 & 26 AWG SOLID & 24/7 STRAND COPPER CONDUCTORS. MAXIMUM INSULATION DIAMETER OF 1.14 [.045] IS ACCEPTABLE FOR MOST APPLICATIONS.
- △ CORING MAY OR MAY NOT APPEAR AND IS AT THE DISCRETION OF AMP INCORPORATED.

PACKAGING	CABLE RANGE	DUST COVER	COLOR	PART NUMBER
BULK PACKED	ø7.62-8.26 [ø.300-.325]	YES	BLACK	6-5229912-7
	ø8.89-10.80 [ø.350-.425]	YES	GRAY	6-5229912-4
POLY BAGGED	ø8.89-10.80 [ø.350-.425]	YES	BLACK	6-5229912-3
	ø10.80-12.70 [ø.425-.500]	NO	BLACK	6-5229912-1
	ø8.89-10.80 [ø.350-.425]	NO	BLACK	3-5229912-1
	ø8.89-10.80 [ø.350-.425]	NO	GRAY	2-5229912-1
		NO	BLACK	1-5229912-1
		NO	GRAY	5229912-4
		NO	BLACK	5229912-1

THIS DRAWING IS A CONTROLLED DOCUMENT.		DWG. G. PETERS 23SEP05		Tyco Electronics Corporation	
DIMENSIONS: mm [INCHES]		CHK. W. MILLIHINES 23SEP05		Harrisburg, Pa 17105-3608	
TOLERANCES UNLESS OTHERWISE SPECIFIED:		APPD. M. WALMSLEY 23SEP05		NAME Tyco Electronics	
Ø PLC ± .15	△	APPLICATION SPEC: -		SIZE CASE CODE DRAWING NO. RESTRICTED TO	
1 PLC ± .10	△	WEIGHT: -		A2 00779 C-5229912	
2 PLC ± .07	△	MATERIAL: -		CUSTOMER DRAWING	
3 PLC ± .05	△	FINISH: -		SCALE 2:1 SHEET 1 of 1 REV 0	

AMP 1471-9 REV 31MAR2000

5229912

B

A