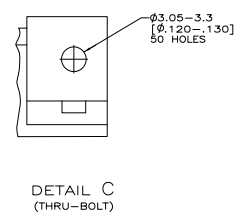
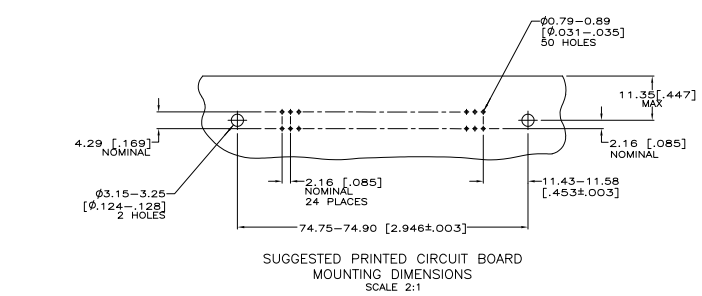
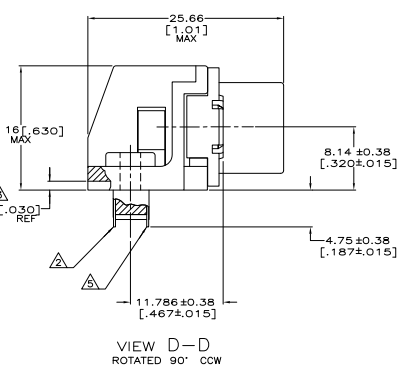
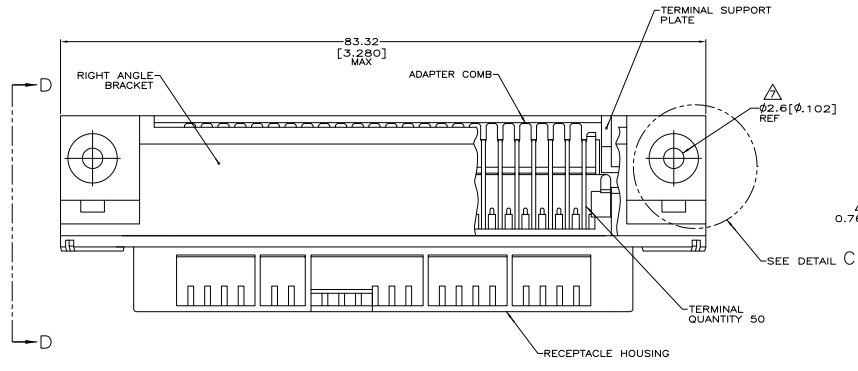


- ⚠ MATERIAL: HOUSING, BRACKET, PLATE AND COMB - THERMOPLASTIC, BLACK, 94V-0 RATED, TERMINALS-TAILS - TIN OVER NICKEL PLATED HIGH STRENGTH COPPER ALLOY. MATING SURFACE - LOCALIZED GOLD OVER NICKEL PLATED HIGH STRENGTH COPPER ALLOY. THREADED INSERT - #4-40 UNC, BRIGHT ZINC PLATED BRASS.
- ⚠ TERMINAL 1 IS LOCATED IN THIS ROW FOR STANDARD ORIENTATION, 5552725-1, -2 AND -5.
- ⚠ TERMINAL SUPPORT PLATE CLEARANCE FOR TERMINAL STRAIN RELIEF AND FLUX REMOVAL.
- ⚠ MAXIMUM PANEL THICKNESS: 1.57[.062].
- ⚠ TERMINAL 1 IS LOCATED IN THIS ROW FOR REVERSE ORIENTATION, 5552725-3 AND -6 ONLY.
- ⚠ DETAILS "A" AND "B" ARE VIEWED FROM MATING SIDE OF RECEPTACLE ASSEMBLY.
- ⚠ FOR USE WITH A NO.4 BT TYPE SELF-TAPPING SCREW.
- ⚠ 5552725-1, -2 AND -3 ARE TAPPED 4-40; -5 AND -6 USE 4-40 THREADED INSERTS.
- ⚠ INSERT SHALL WITHSTAND 8 INCH-POUNDS OF TORQUE WITHOUT CRACKING HOUSING OR LOOSENING.



THREADED INSERT	SELF-TAPPING	SEE DETAIL B	5552725-6
THREADED INSERT	SELF-TAPPING	SEE DETAIL A	5552725-5
TAPPED HOLE	SELF-TAPPING	SEE DETAIL B	5552725-3
TAPPED HOLE	THRU-BOLT(SEE DETAIL C)	SEE DETAIL A	5552725-2
TAPPED HOLE	SELF-TAPPING	SEE DETAIL A	5552725-1
THREAD TYPE	TYPE OF MOUNTING	DESCRIPTION	PART NUMBER

THIS DRAWING IS A CONTROLLED DOCUMENT.		REV. 00		DATE 11/05/04	
DESIGNED BY	DESIGNED BY	DESIGNED BY	DESIGNED BY	DESIGNED BY	DESIGNED BY
DATE	DATE	DATE	DATE	DATE	DATE
11/05/04	11/05/04	11/05/04	11/05/04	11/05/04	11/05/04
RECEPTACLE ASSEMBLY, 50 POSITION, RIGHT ANGLE, SELF TAPPING, CHANGE		REV. 00	DATE 11/05/04	DESIGNED BY	11/05/04
CUSTOMER DRAWING		REV. 00	DATE 11/05/04	DESIGNED BY	11/05/04