

**Gehäuse für Junior  
Power Timer-Kontakte,  
Länge 21,0 mm (Seite 13),  
auf Basis Einzelleiter-  
Dichtungs-System  
für Aggregat-Anschluß  
(Fortsetzung)**

**tyco** Electronics

**Housing for Junior  
Power Timer Contacts,  
21.0 mm Length (Page 13),  
Based on Single Wire  
Sealing System for  
Aggregate Application  
(continued)**

**2polig**

Best.-Nr. **282762-1** (schwarz)  
Best.-Nr. **282762-2** (grau)  
Best.-Nr. **282762-3** (natur)  
Best.-Nr. **282762-4** (grün)  
Best.-Nr. **282762-5** (blau)  
Best.-Nr. **282762-6** (braun)  
Best.-Nr. **282762-7** (gelb)  
Best.-Nr. **282762-8** (rot)

**Entriegelung mit Hilfsmittel.**

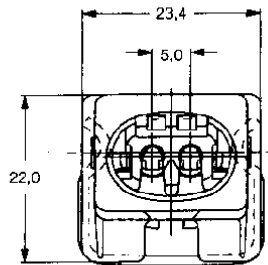
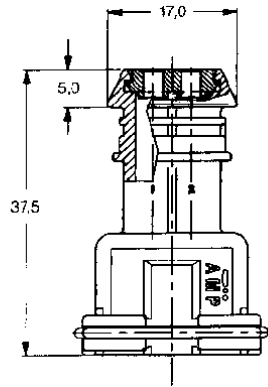
**Passend zu Gehäuse:**

Best.-Nr. **106462**, siehe Seite 57

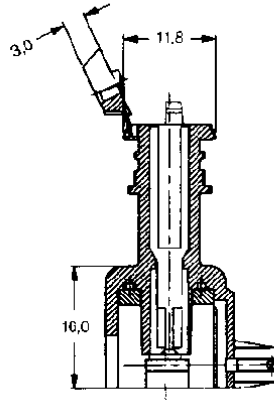
**Produkt-Spezifikation:**

108-23091

**Typ A**



**Type A**



**2 Positions**

Part No. **282762-1** (black)  
Part No. **282762-2** (grey)  
Part No. **282762-3** (natural)  
Part No. **282762-4** (green)  
Part No. **282762-5** (blue)  
Part No. **282762-6** (brown)  
Part No. **282762-7** (yellow)  
Part No. **282762-8** (red)

**Release with Auxiliary Tool.**

**Mating with Housing:**

Part No. **106462**, see Page 57

**Product Specification:**

108-20091

**2polig**

Best.-Nr. **282190-1** (schwarz)  
Best.-Nr. **282190-2** (grau)

**Entriegelung mit Hilfsmittel.**

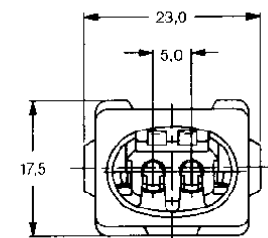
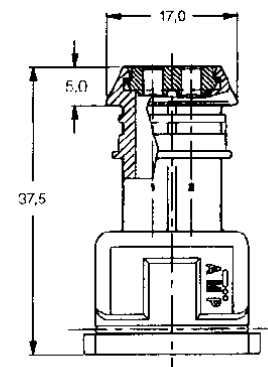
**Passend zu Gehäuse:**

Best.-Nr. **106462**, siehe Seite 57

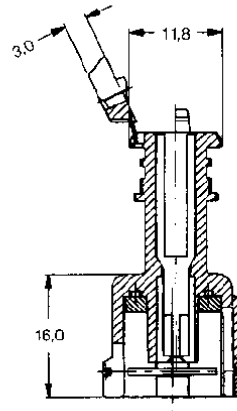
**Produkt-Spezifikation:**

108-20091

**Typ A**



**Type A**



**2 Positions**

Part No. **282190-1** (black)  
Part No. **282190-2** (grey)

**Release with Auxiliary Tool.**

**Mating with Housing:**

Part No. **106462**, see Page 57

**Product Specification:**

108-20091