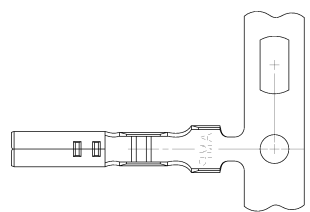
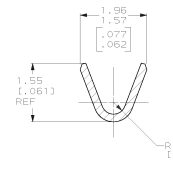
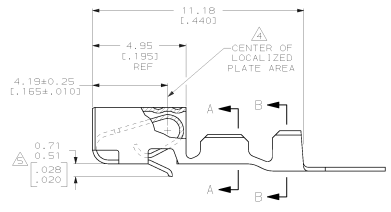
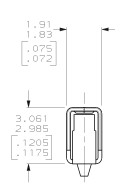


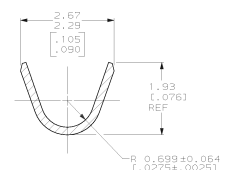
REVOLUTIONS		DATE	APPROV.
CM	54	J REV PER EC DL30-0104-95	P-2649



1. WIRE RANGE: 0.13 - 0.35 mm² (26 - 22 AWG)
 2. INSULATION RANGE: 0.89 - 1.85 (.035 - .065) DIA. LARGER SIZES OF 1.88 - 1.91 (.066 - .075) DIA. INSULATION REQUIRES WIRE AND CRIMP EVALUATION FROM AMP INCORPORATED.
 3. DIMENSIONS IN BRACKETS ARE IN INCHES.
- ⚠ 0.00076 (.000030) MIN THK GOLD STRIPES IN LOCALIZED PLATE AREA ON BEAM AND DIMPLE OVER 0.00127 (.000050) MIN THK NICKEL OVER ENTIRE CONTACT.
- ⚠ AFTER PACKAGING AND SHIPMENT, A LANCE HEIGHT 0.46 - 0.71 (.018 - .028) IS PERMISSIBLE.



SECTION A-A
SCALE 20:1



SECTION B-B
SCALE 20:1

METRIC

DO NOT SCALE PRINT. UNLESS SPECIFIED DIMENSIONS IN MM (INCHES) TOLERANCES IN U.S. P.L.C. SEE # 3 P.L.C. DEC 0613 1.0091 MILLIS. # -		DR C. MARTIN 10-4-89	770601-2
FINISH SEE TABLE	APPLICATION SPEC -	CHK D. SHING 10-4-89	770601-1
MATERIAL 0.198 PH BRZ (.0078)		APPD D. SHING 10-4-89	AMP INCORPORATED MORTON, PA. 17055
RECEPTACLE, CST-100		APPD D. SHING 10-4-89	770601-1
SIZE D 00779		FINISH	770601-1
SCALE 10:1		DRAWING NO 770601	SHEET 1 OF 1

CUSTOMER DRAWING