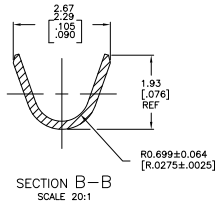
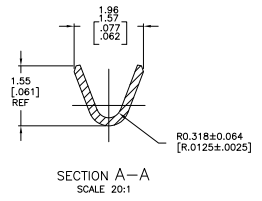
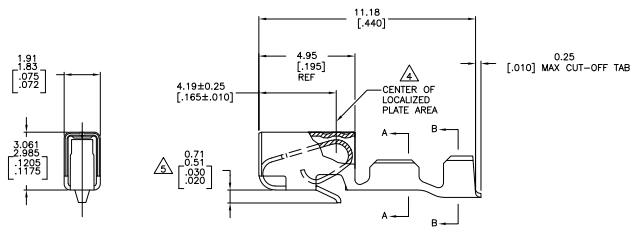
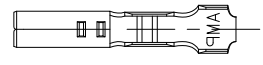


REV	DATE	DESCRIPTION	BY	CHK	APP
CM 54					

1. WIRE RANGE 0.13 - 0.35 MM² (26 - 22 AWG).
 2. INSULATION RANGE: 0.89 - 1.65 [.035 - .065] DIA
LARGER SIZES OF 1.68 - 1.91 [.066 - .075] DIA
INSULATION REQUIRE WIRE AND CRIMP EVALUATION
FROM AMP INCORPORATED.
 3. DIMENSIONS IN BRACKETS ARE IN INCHES.
- ⚠ 0.00076 [.000030] MIN THK GOLD STRIPES IN LOCALIZED
PLATE AREA ON BEAM AND DIMPLE OVER 0.00127 [.000050]
MIN THK NICKEL OVER ENTIRE CONTACT.
- ⚠ AFTER PACKAGING AND SHIPMENT, A LANCE HEIGHT
0.46 - 0.71 [.018 - .030] IS PERMISSIBLE.



THIS DRAWING IS A CONTROLLED DOCUMENT.		REV	DATE	DESCRIPTION	BY	CHK	APP
UNLESS OTHERWISE SPECIFIED:		UNIT	INCHES	TOLERANCES	AS SHOWN	UNLESS OTHERWISE SPECIFIED	UNLESS OTHERWISE SPECIFIED
FINISH	PRE-TIN	FINISH	770666-2	770666-1			
REVISIONS	REV	DATE	DESCRIPTION	BY	CHK	APP	

770666-2
PRE-TIN
FINISH
PART NO.
770666-1

THIS DRAWING IS A CONTROLLED DOCUMENT.
 UNLESS OTHERWISE SPECIFIED:
 UNIT: INCHES
 TOLERANCES: AS SHOWN
 UNLESS OTHERWISE SPECIFIED

REVISIONS

REV: CM 54
 DATE: 8/20/88
 DESCRIPTION: RECEPTACLE, CST-100, LOOSE PIECE
 BY: [Signature]
 CHK: [Signature]
 APP: [Signature]

DATE: 10-11-88
 TIME: 1 1 11
 H