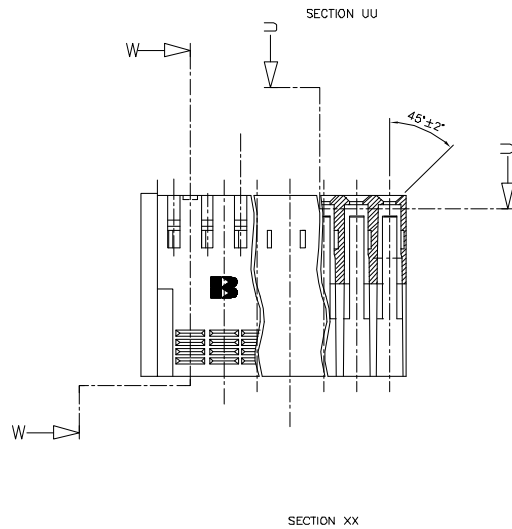
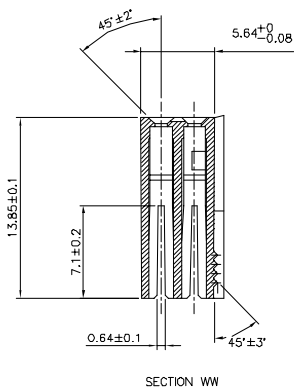
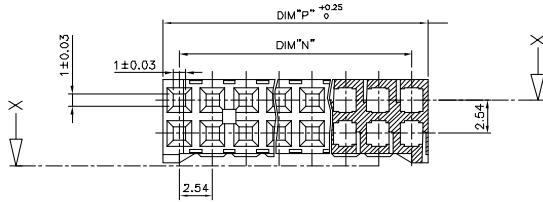


PRODUCT NUMBER
66987-0XXLF

WHEN NEEDED, SUFFIX LETTER "LF" INDICATES THE PRODUCT IS RoHS COMPLIANT, SEE NOTE 5



NOTES:

- 1 - MOLDING MATERIAL: PBT 30% GLASS FILLED, COLOUR: BLUE, FLAME RETARDANT, ACCORDING TO UL 94, CATEGORY V0.
- 2 - OVER DASH NUMBER -008 ONLY THE FIRST AND LAST THREE POSITIONS MUST HAVE GROOVES ON TWO SIDES
- 3 - THIS HOUSING IS INTENDED FOR USE WITH BERG TERMINAL # 76785-YXX AND BERG HEADERS # 76385-YXX OR 76383-YXX
- 4 - FOR BERG DUFLEX CLINCHER APPLICATION DATA SEE SPECIFICATION TA-333 SHEET 213-10F1
- 5 - RoHS COMPATIBLE PRODUCT SPECIFICATIONS
 - a - LABELING:
 - MEETS PACKAGING SPECS AS PER GS-14-920
 - b - LEGAL STATEMENT: SEE GS-22-008

THE PRODUCT IS NOT INTENDED TO BE EXPOSED TO A MANUFACTURING SOLDER PROCESS.

CUSTOMER COPY FOR REFERENCE ONLY									
matl. code	date	revision	description	projection	product family	title			
SEE NOTE 1	04.12.10	1	ISO 1802	ISO 496 ISO 9001	VCC DR	DUFLEX HOUSING DOUBLE ROW			
lit. ecn no	dr	date	description	revision	specific	scale 1:25			
A	790386	04.12.10	angles			mm			
B	F00499	04.12.10	Linear						
C	F04-0347	04.12.10							
D	F05-0188	05.04.07	DR	D	LEGRAND	04.07.10			
E	F05-0234	05.04.24	RMGT	JM	PHANANAN	08.07.10			
F	F05-0284	05.11.07	ENR	P	WIZO	08.07.10			
G	F06-0224	04.07.07	01002	JMP	08.07.10				
sheet index	revision	G	F	F					
	sheet	1	2						

FCI CONFIDENTIAL



FCI Connect Ltd

FCI

FCI

FCI

FCI

FCI

FCI

FCI

FCI

FCI

FCI

FCI

FCI

FCI

FCI

1 2 3 4 5 6 7 8

PRODUCT NUMBER	NUMBER OF POS.	DIM"N"	DIM"P"
66987-002(LF)	2 x 02	2.54	5.00
66987-003(LF)	2 x 03	5.08	7.54
66987-004(LF)	2 x 04	7.62	10.08
66987-005(LF)	2 x 05	10.16	12.62
66987-006(LF)	2 x 06	12.70	15.16
66987-007(LF)	2 x 07	15.24	17.70
66987-008(LF)	2 x 08	17.78	20.24
66987-009(LF)	2 x 09	20.32	22.78
66987-010(LF)	2 x 10	22.86	25.32
66987-011(LF)	2 x 11	25.40	27.86
66987-012(LF)	2 x 12	27.94	30.40
66987-013(LF)	2 x 13	30.48	32.94
66987-014(LF)	2 x 14	33.02	35.48
66987-015(LF)	2 x 15	35.56	38.02
66987-016(LF)	2 x 16	38.10	40.56
66987-017(LF)	2 x 17	40.64	43.10
66987-018(LF)	2 x 18	43.18	45.64
66987-019(LF)	2 x 19	45.72	48.18
66987-020(LF)	2 x 20	48.26	50.72
66987-021(LF)	2 x 21	50.80	53.26
66987-022(LF)	2 x 22	53.34	55.80
66987-023(LF)	2 x 23	55.88	58.34
66987-024(LF)	2 x 24	58.42	60.88
66987-025(LF)	2 x 25	60.96	63.42
66987-026(LF)	2 x 26	63.50	65.96
66987-027(LF)	2 x 27	66.04	68.50
66987-028(LF)	2 x 28	68.58	71.04
66987-029(LF)	2 x 29	71.12	73.58
66987-030(LF)	2 x 30	73.66	76.12
66987-031(LF)	2 x 31	76.20	78.66
66987-032(LF)	2 x 32	78.74	81.20
66987-033(LF)	2 x 33	81.28	83.74
66987-034(LF)	2 x 34	83.82	86.28
66987-035(LF)	2 x 35	86.36	88.82
66987-036(LF)	2 x 36	88.90	91.36

part code	surface	tolerance	projection	product family
SEE NOTES SHEET 1	ISO 1802	ISO 401 ISO 901	1st	VCC DR
litr	date	tolerance unless otherwise specified		title
E POS-023M DUE 05.06.24	angles	0.2 x		DUFLEX
F POS-022M DUE 06.07.07	Linear	0.02 0x	mm	HOUSING DOUBLE ROW
	dr	0.004 0.00x	scale N/A	dwg no
	dr	D LEGRAND 06.07.13		sheet 2 of 2
	engr	P NIZZI 08.07.13		size
	chr	D LEGRAND 08.07.13		Az
	appd	P NZ 08.07.13		type
				CUSTOMER Drawing
sheet	revision			
index	sheet			

PDM: Rev:G STATUS:Released Printed: Jun 06, 2009