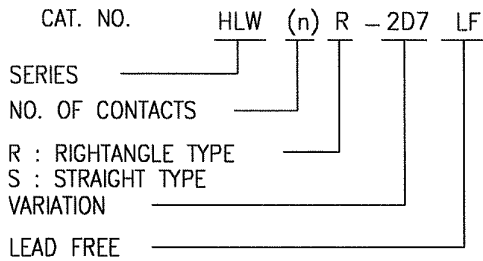




CAT. NO. & DIMENSIONS

| NO. OF CONTACTS (n) | CAT. NO.         | CAT. NO.      | DIMENSIONS (NOTE 1) |         |      |
|---------------------|------------------|---------------|---------------------|---------|------|
|                     | RIGHT ANGLE TYPE | STRAIGHT TYPE | A ± 0.3             | B ± 0.1 | C    |
| 4                   | HLW 4R-2D7LF     | HLW 4S-2D7LF  | 6.6                 | 5.12    | 3.0  |
| 5                   | HLW 5R-2D7LF     | HLW 5S-2D7LF  | 7.6                 | 6.12    | 4.0  |
| 6                   | HLW 6R-2D7LF     | HLW 6S-2D7LF  | 8.6                 | 7.12    | 5.0  |
| 7                   | HLW 7R-2D7LF     | HLW 7S-2D7LF  | 9.6                 | 8.12    | 6.0  |
| 8                   | HLW 8R-2D7LF     | HLW 8S-2D7LF  | 10.6                | 9.12    | 7.0  |
| 9                   | HLW 9R-2D7LF     | HLW 9S-2D7LF  | 11.6                | 10.12   | 8.0  |
| 10                  | HLW10R-2D7LF     | HLW10S-2D7LF  | 12.6                | 11.12   | 9.0  |
| 11                  | HLW11R-2D7LF     | HLW11S-2D7LF  | 13.6                | 12.12   | 10.0 |
| 12                  | HLW12R-2D7LF     | HLW12S-2D7LF  | 14.6                | 13.12   | 11.0 |
| 13                  | HLW13R-2D7LF     | HLW13S-2D7LF  | 15.6                | 14.12   | 12.0 |
| 14                  | HLW14R-2D7LF     | HLW14S-2D7LF  | 16.6                | 15.12   | 13.0 |
| 15                  | HLW15R-2D7LF     | HLW15S-2D7LF  | 17.6                | 16.12   | 14.0 |
| 16                  | HLW16R-2D7LF     | HLW16S-2D7LF  | 18.6                | 17.12   | 15.0 |
| 17                  | HLW17R-2D7LF     | HLW17S-2D7LF  | 19.6                | 18.12   | 16.0 |
| 18                  | HLW18R-2D7LF     | HLW18S-2D7LF  | 20.6                | 19.12   | 17.0 |
| 19                  | HLW19R-2D7LF     | HLW19S-2D7LF  | 21.6                | 20.12   | 18.0 |
| 20                  | HLW20R-2D7LF     | HLW20S-2D7LF  | 22.6                | 21.12   | 19.0 |
| 21                  | HLW21R-2D7LF     | HLW21S-2D7LF  | 23.6                | 22.12   | 20.0 |
| 22                  | HLW22R-2D7LF     | HLW22S-2D7LF  | 24.6                | 23.12   | 21.0 |
| 23                  | HLW23R-2D7LF     | HLW23S-2D7LF  | 25.6                | 24.12   | 22.0 |
| 24                  | HLW24R-2D7LF     | HLW24S-2D7LF  | 26.6                | 25.12   | 23.0 |
| 25                  | HLW25R-2D7LF     | HLW25S-2D7LF  | 27.6                | 26.12   | 24.0 |
| 26                  | HLW26R-2D7LF     | HLW26S-2D7LF  | 28.6                | 27.12   | 25.0 |
| 27                  | HLW27R-2D7LF     | HLW27S-2D7LF  | 29.6                | 28.12   | 26.0 |
| 28                  | HLW28R-2D7LF     | HLW28S-2D7LF  | 30.6                | 29.12   | 27.0 |
| 29                  | HLW29R-2D7LF     | HLW29S-2D7LF  | 31.6                | 30.12   | 28.0 |
| 30                  | HLW30R-2D7LF     | HLW30S-2D7LF  | 32.6                | 31.12   | 29.0 |
| 31                  | HLW31R-2D7LF     | HLW31S-2D7LF  | 33.6                | 32.12   | 30.0 |
| 32                  | HLW32R-2D7LF     | HLW32S-2D7LF  | 34.6                | 33.12   | 31.0 |

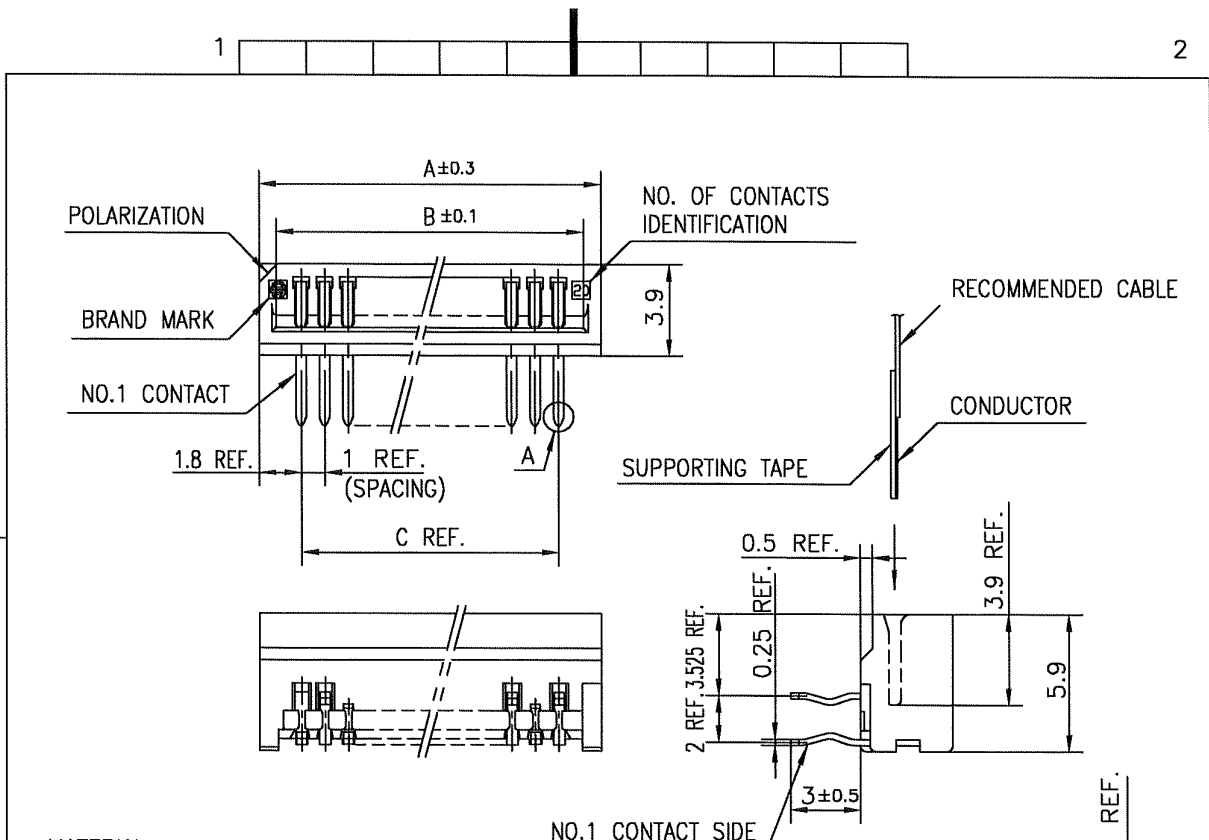


NOTES

1. SEE PART DRAWINGS FOR DIMENSIONS A~C.

|             |                |     |         |                                       |                                  |                |   |                                       |  |
|-------------|----------------|-----|---------|---------------------------------------|----------------------------------|----------------|---|---------------------------------------|--|
| mat'l. code |                |     |         | surface 5B ✓<br>ISO 1302 ✓            | tolerance<br>ISO 406<br>ISO 1101 | projection<br> | product family 58PF/QF  | CODE JP                               |  |
| ltr         | ecn no         | dr  | date    | tolerances unless otherwise specified |                                  | mm<br>↔        | title<br>CAT NO. TABLE FOR<br>1mm SPACING CONNECTOR<br>(CAT NO. HLW__R/S-2D7LF) |                                       |  |
| A           | J05-0270       | H.T | 5/10/05 | angles                                | linear                           |                | scale X   | dwg no JSA 96409 sheet 1 of 1 size A4 |  |
| B           | J06-0449       | H.T | 11/2/06 |                                       |                                  |                | type Product Customer Drawing   |                                       |  |
|             |                |     |         | dr                                    | <i>H. Hoshino 11/2/06</i>        |                | Rev. B  |                                       |  |
|             |                |     |         | engr                                  | <i>H. Hoshino 11/2/06</i>        |                |   |                                       |  |
|             |                |     |         | chr                                   | <i>K. Shoyu 11/2/06</i>          |                |   |                                       |  |
|             |                |     |         | appd                                  | <i>S. Oudam 11/7/06</i>          |                |   |                                       |  |
| sheet index | revision sheet | B   | 1       |                                       |                                  |                |   |                                       |  |

SC-HLW05 form: A4 JSA96410 96411 93382 93383



**MATERIAL**

INSULATOR : PBT RESIN GLASS REINFORCED (UL94V-0)  
 CONTACT : COLOR : BLACK  
 PHOSPHOR BRONZE  
 PLATING : TIN

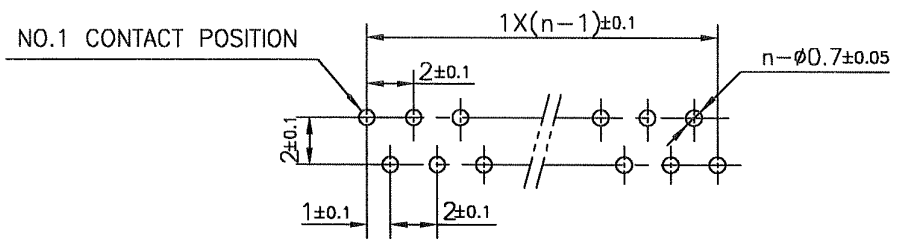
**NOTE**

1. THIS PRODUCT IS RIGHT ANGLE TYPE CONNECTOR.
2. THIS PRODUCT MEETS EUROPEAN UNION DIRECTIVES AND OTHER COUNTRY REGULATIONS AS DESCRIBED IN GS-22-008.
3. THE HOUSING WILL WITHSTAND EXPOSURE TO 260°C PEAK TEMPERATURE FOR 10 SECONDS IN A WAVE SOLDER APPLICATION WITH A 1.6mm THICK CIRCUIT BOARD.

**RECOMMENDED PC BOARD**

THICKNESS : 1.2~1.6  
 HOLE PATTERN (COMPONENT SIDE)

n:NO.OF CONTACTS



|             |  |  |  |                        |  |                                  |  |            |  |                     |  |  |  |
|-------------|--|--|--|------------------------|--|----------------------------------|--|------------|--|---------------------|--|--|--|
| mat'l. code |  |  |  | surface 58<br>ISO 1302 |  | tolerance<br>ISO 406<br>ISO 1101 |  | projection |  | product family 58PF |  | CODE JP  |  |
| ltr         |  |  |  | ecn no                 |  | dr                               |  | date       |  | title               |  | 1mm SPACING<br>CONNECTOR FOR FPC/FFC<br>(CAT NO. HLW__R-2D7LF) |  |
| A           |  |  |  | J05-0270               |  | H.T                              |  | 5/10/05    |  | mm                  |  | scale X  |  |
| B           |  |  |  | J05-0735               |  | H.T                              |  | 10/28/05   |  | angles              |  | linear ±0.2  |  |
| C           |  |  |  | J06-0449               |  | H.T                              |  | 11/2/06    |  | dr                  |  | engr   |  |
|             |  |  |  |                        |  |                                  |  |            |  | chr                 |  | appd   |  |
|             |  |  |  |                        |  |                                  |  |            |  | S. Udani            |  | 11/2/06  |  |
|             |  |  |  |                        |  |                                  |  |            |  | S. Udani            |  | 11/2/06  |  |
|             |  |  |  |                        |  |                                  |  |            |  | S. Udani            |  | 11/2/06  |  |
| sheet index |  |  |  | revision sheet         |  | C                                |  | 1          |  | dwg no              |  | sheet 1 of 1 size A4   |  |
|             |  |  |  |                        |  |                                  |  |            |  | JSA 96410           |  |  |  |
|             |  |  |  |                        |  |                                  |  |            |  | type                |  | Product Customer Drawing                                       |  |
|             |  |  |  |                        |  |                                  |  |            |  |                     |  | Rev. C   |  |

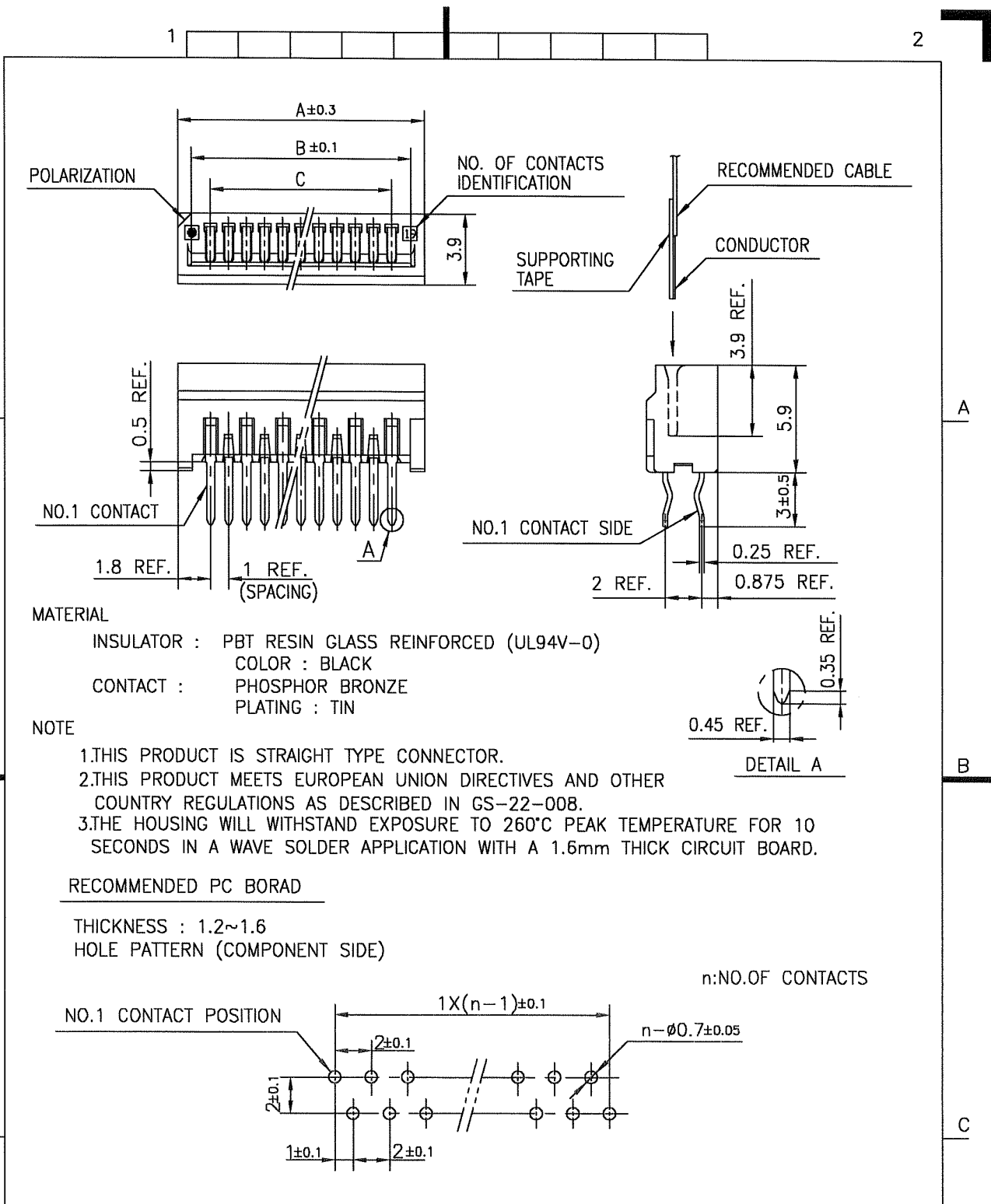
SC-HLW05 form: A4 JSA96409



FCIconnect.com

Copyright FCI.





**MATERIAL**

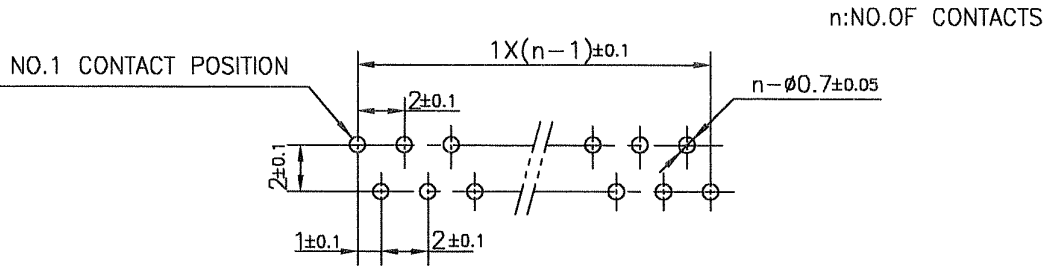
INSULATOR : PBT RESIN GLASS REINFORCED (UL94V-0)  
 COLOR : BLACK  
 CONTACT : PHOSPHOR BRONZE  
 PLATING : TIN

**NOTE**

1. THIS PRODUCT IS STRAIGHT TYPE CONNECTOR.
2. THIS PRODUCT MEETS EUROPEAN UNION DIRECTIVES AND OTHER COUNTRY REGULATIONS AS DESCRIBED IN GS-22-008.
3. THE HOUSING WILL WITHSTAND EXPOSURE TO 260°C PEAK TEMPERATURE FOR 10 SECONDS IN A WAVE SOLDER APPLICATION WITH A 1.6mm THICK CIRCUIT BOARD.

**RECOMMENDED PC BOARD**

THICKNESS : 1.2~1.6  
 HOLE PATTERN (COMPONENT SIDE)

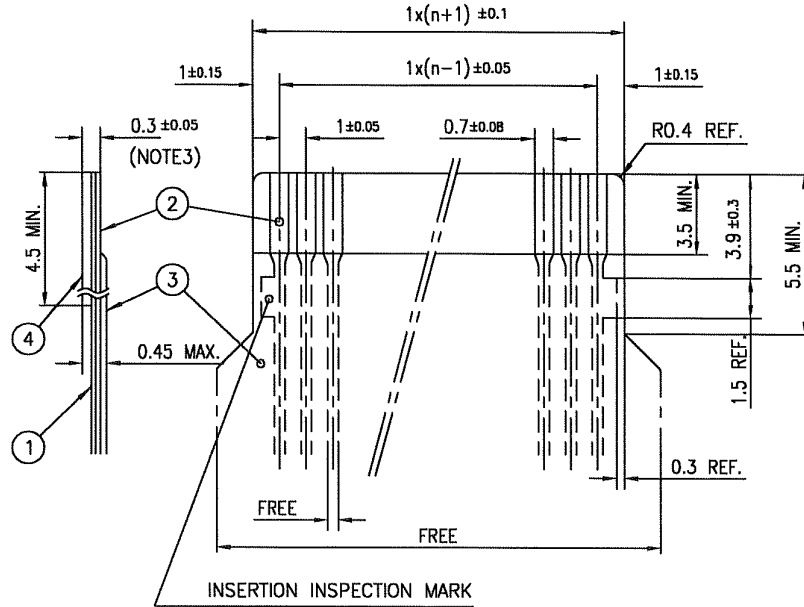


|             |          |                |                        |  |                                  |    |  |   |                        |  |            |           |
|-------------|----------|----------------|------------------------|--|----------------------------------|----|--|---|------------------------|--|------------|-----------|
| mat'l. code |          |                | surface 58<br>ISO 1302 |  | tolerance<br>ISO 406<br>ISO 1101 |    | projection<br>   |   | product family<br>58QF |  | CODE<br>JP |           |
| ltr         | ecn no   | dr             | date                   | tolerances unless<br>otherwise specified |                                  | mm |  | title<br>1mm SPACING<br>CONNECTOR FOR FPC/FCC<br>(CAT NO. HLW__S-2D7LF) |                        |  |            |           |
| A           | J05-0270 | H.T            | 5/10/05                | angles                                   | ±0.2                             |    | <br>dwg no JSA 96411 sheet 1 of 1 size A4<br>type Product Customer Drawing |   |                        |  |            |           |
| B           | J05-0735 | H.T            | 10/28/05               | linear                                   |                                  |    |  |   |                        |  |            |           |
| C           | J06-0449 | H.T            | 11/2/06                |  |                                  |    |  |   |                        |  |            |           |
| sheet index |          | revision sheet | C                      | dr                                       | 11/2/06                          |    |  |   |                        |  |            |           |
|             |          |                |                        | enr                                      | 11/2/06                          |    |  |   |                        |  |            |           |
|             |          |                |                        | chr                                      | 11/2/06                          |    |  |   |                        |  |            |           |
|             |          |                |                        | appd                                     | 11/2/06                          |    |  |   |                        |  |            |           |
| sheet index |          | revision sheet | C                      |  |                                  |    |  |   |                        |  |            | Rev.<br>c |

SC-HLW05  
 form: A4  
 JSA96409

RECOMMENDED CABLE (FPC)

n : NO. OF CONDUCTORS



| PT. NO. | DESCRIPTION     | MATERIAL   | THICKNESS ( $\mu\text{m}$ ) |
|---------|-----------------|--|-----------------------------|
| 1       | BASE FILM       | POLYIMIDE OR POLYESTER OR EQUIVALENT               | 25                          |
| 2       | CONDUCTOR       | COPPER FOIL (PLATING : SOLDER $1\mu\text{m}$ MIN.) | 35                          |
| 3       | OVERLAY         | POLYIMIDE OR POLYESTER OR EQUIVALENT               | —                           |
| 4       | SUPPORTING TAPE | POLYESTER OR POLYIMIDE OR EQUIVALENT               | 188                         |

NOTES

1. NO BURR AT EACH PORTION.
2. NO PEELING IN COMMON USE.
3. TOTAL THICKNESS LIMIT OF EACH MATERIAL (INCLUDING ADHESIVE AGENT) IS SPECIFIED.

|             |          |                |         |  |        |            |  |                               |  |              |  |
|-------------|----------|----------------|---------|--|--------|------------|--|-------------------------------|--|--------------|--|
| mat'l. code |          |                |         | surface 58 / tolerance ISO 1302 ✓ / ISO 406 / ISO 1101 |        | projection |  | product family 58PF/QF        |  | CODE JP      |  |
| ltr         | ecn no   | dr             | date    | tolerances unless otherwise specified                  |        | mm         |  | title                         |  |              |  |
| AA          | J05-0270 | H.T            | 5/11/05 | angles   | linear | mm         |  | RECOMMENDED CABLE (FPC)       |  |              |  |
| AB          | J06-0449 | H.T            | 11/2/06 |  |        | scale X    |  | (Cat. No. HLW__R/S-___)       |  |              |  |
|             |          |                |         | dr   | engr   | FCJ        |  | dwg no                        |  | sheet 1 of 1 |  |
|             |          |                |         | chr  | appd   |            |  | JSA 93382                     |  | A4           |  |
| sheet index |          | revision sheet |         | AB 1   |        |            |  | type Product Customer Drawing |  |              |  |
|             |          |                |         |  |        |            |  |                               |  | Rev. AB      |  |





CAT. NO. & DIMENSIONS

| NO. OF CONTACTS (n) | CAT. NO.      |                  | DIMENSIONS (NOTE1) |         |      |
|---------------------|---------------|------------------|--------------------|---------|------|
|                     | STRAIGHT TYPE | RIGHT ANGLE TYPE | A ± 0.3            | B ± 0.1 | C    |
| 4                   | HLW 4S-6D7LF  | HLW 4R-6D7LF     | 6.6                | 5.12    | 3.0  |
| 5                   | HLW 5S-6D7LF  | HLW 5R-6D7LF     | 7.6                | 6.12    | 4.0  |
| 6                   | HLW 6S-6D7LF  | HLW 6R-6D7LF     | 8.6                | 7.12    | 5.0  |
| 7                   | HLW 7S-6D7LF  | HLW 7R-6D7LF     | 9.6                | 8.12    | 6.0  |
| 8                   | HLW 8S-6D7LF  | HLW 8R-6D7LF     | 10.6               | 9.12    | 7.0  |
| 9                   | HLW 9S-6D7LF  | HLW 9R-6D7LF     | 11.6               | 10.12   | 8.0  |
| 10                  | HLW 10S-6D7LF | HLW 10R-6D7LF    | 12.6               | 11.12   | 9.0  |
| 11                  | HLW 11S-6D7LF | HLW 11R-6D7LF    | 13.6               | 12.12   | 10.0 |
| 12                  | HLW12S-6D7LF  | HLW12R-6D7LF     | 14.6               | 13.12   | 11.0 |
| 13                  | HLW13S-6D7LF  | HLW13R-6D7LF     | 15.6               | 14.12   | 12.0 |
| 14                  | HLW14S-6D7LF  | HLW14R-6D7LF     | 16.6               | 15.12   | 13.0 |
| 15                  | HLW15S-6D7LF  | HLW15R-6D7LF     | 17.6               | 16.12   | 14.0 |
| 16                  | HLW16S-6D7LF  | HLW16R-6D7LF     | 18.6               | 17.12   | 15.0 |
| 17                  | HLW17S-6D7LF  | HLW17R-6D7LF     | 19.6               | 18.12   | 16.0 |
| 18                  | HLW18S-6D7LF  | HLW18R-6D7LF     | 20.6               | 19.12   | 17.0 |
| 19                  | HLW19S-6D7LF  | HLW19R-6D7LF     | 21.6               | 20.12   | 18.0 |
| 20                  | HLW20S-6D7LF  | HLW20R-6D7LF     | 22.6               | 21.12   | 19.0 |
| 21                  | HLW21S-6D7LF  | HLW21R-6D7LF     | 23.6               | 22.12   | 20.0 |
| 22                  | HLW22S-6D7LF  | HLW22R-6D7LF     | 24.6               | 23.12   | 21.0 |
| 23                  | HLW23S-6D7LF  | HLW23R-6D7LF     | 25.6               | 24.12   | 22.0 |
| 24                  | HLW24S-6D7LF  | HLW24R-6D7LF     | 26.6               | 25.12   | 23.0 |
| 25                  | HLW25S-6D7LF  | HLW25R-6D7LF     | 27.6               | 26.12   | 24.0 |
| 26                  | HLW26S-6D7LF  | HLW26R-6D7LF     | 28.6               | 27.12   | 25.0 |
| 27                  | HLW27S-6D7LF  | HLW27R-6D7LF     | 29.6               | 28.12   | 26.0 |
| 28                  | HLW28S-6D7LF  | HLW28R-6D7LF     | 30.6               | 29.12   | 27.0 |
| 29                  | HLW29S-6D7LF  | HLW29R-6D7LF     | 31.6               | 30.12   | 28.0 |
| 30                  | HLW30S-6D7LF  | HLW30R-6D7LF     | 32.6               | 31.12   | 29.0 |
| 31                  | HLW31S-6D7LF  | HLW31R-6D7LF     | 33.6               | 32.12   | 30.0 |
| 32                  | HLW32S-6D7LF  | HLW32R-6D7LF     | 34.6               | 33.12   | 31.0 |

A

A

B

B

C

C



FCIconnect.com

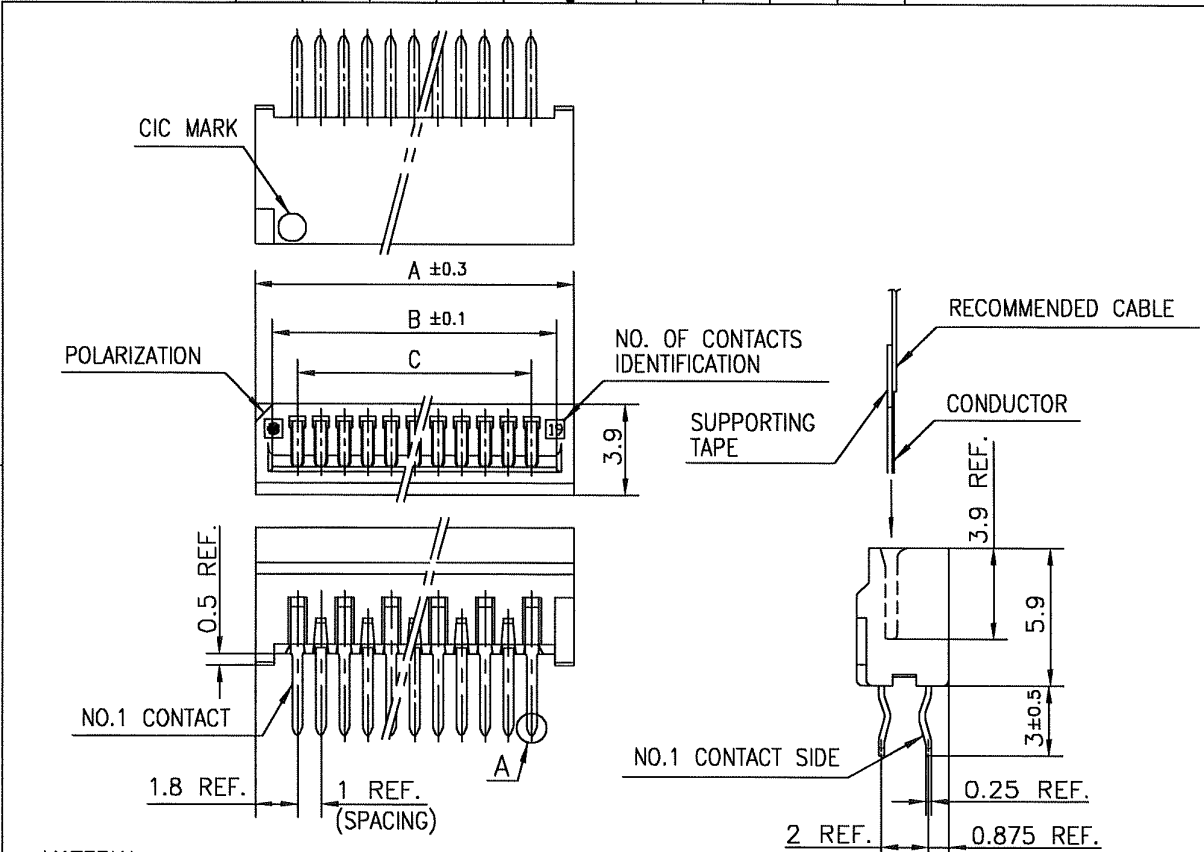
CAT. NO. HLW (n) S - 6D7 LF

SERIES \_\_\_\_\_  
 NO. OF CONTACTS \_\_\_\_\_  
 S : STRAIGHT TYPE  
 R : RIGHT ANGLE TYPE  
 VARIATION \_\_\_\_\_  
 LEAD FREE \_\_\_\_\_

NOTES

1. SEE PART DRAWINGS FOR DIMENSIONS A~C.

|               |                |     |           |                                       |                               |            |  |         |
|---------------|----------------|-----|-----------|---------------------------------------|-------------------------------|------------|--|---------|
| mat'l. code - |                |     |           | surface 58 / ISO 1302 ✓               | tolerance ISO 406 / ISO 1101  | projection | product family 58PF/58QF   | CODE JP |
| ltr           | ecn no         | dr  | date      | tolerances unless otherwise specified |                               | mm         | title  |         |
| A             | J05-0270       | H.T | 5/10/05   | angles                                | linear                        |            | CAT NO. TABLE FOR 1mm SPACING CONNECTOR (CAT NO. HLW__R/S-6D7LF) |         |
| B             | J06-0238       | M.M | 6/8/06    |                                       |                               |            | scale $\times$   |         |
| C             | J09-0255       | M.Y | 2009-6-29 | dr                                    | <i>M. Yamaguchi</i> 2009-6-29 |            | dwg no sheet 1 of 1 size   |         |
|               |                |     |           | enr                                   | <i>M. Yamaguchi</i> 2009-6-29 |            | JSA 96412 A4   |         |
|               |                |     |           | chr                                   | <i>S. W. Chiu</i> 2009-6-29   |            | type Product Customer Drawing                                    |         |
|               |                |     |           | appd                                  | <i>P. Madani</i> 2009-6-29    |            |  |         |
| sheet index   | revision sheet | C   | 1         |                                       |                               |            |  | Rev. C  |



MATERIAL

INSULATOR : PBT RESIN GLASS REINFORCED (UL94V-0)  
 COLOR : BLACK  
 CONTACT : PHOSPHOR BRONZE  
 PLATING : TIN

NOTE

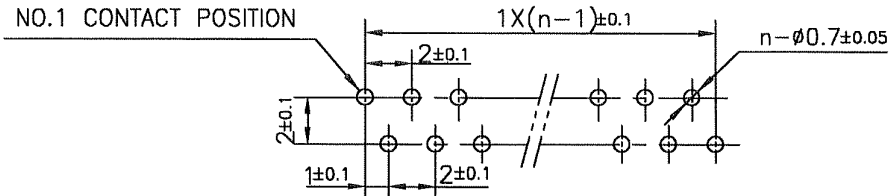
- 1.THIS PRODUCT IS STRAIGHT TYPE CONNECTOR.
- 2.THIS PRODUCT MEETS EUROPEAN UNION DIRECTIVES AND OTHER COUNTRY REGULATIONS AS DESCRIBED IN GS-22-008.
- 3.THE HOUSING WILL WITHSTAND EXPOSURE TO 260°C PEAK TEMPERATURE FOR 10 SECONDS IN A WAVE SOLDER APPLICATION WITH A 1.6mm THICK CIRCUIT BOARD.

RECOMMENDED PC BORAD

THICKNESS : 1.2~1.6  
 HOLE PATTERN (COMPONENT SIDE)

NO.1 CONTACT POSITION

n:NO.OF CONTACTS



|             |                |     |          |  |         |            |     |  |                               |              |      |        |
|-------------|----------------|-----|----------|--|---------|------------|-----|--|-------------------------------|--------------|------|--------|
| mat'l. code |                |     |          | surface 58 / tolerance ISO 1302 / ISO 406 / ISO 1101 |         | projection |     | product family 58QF                                  |                               | CODE JP      |      |        |
| ltr         | ecn no         | dr  | date     | tolerances unless otherwise specified                |         | mm         |     | title  |                               |              |      |        |
| A           | J05-0270       | H.T | 5/10/05  | ±0.2   |         | mm         |     | 1mm SPACING CONNECTOR FOR CIC (CAT NO. HLW__S-6D7LF) |                               |              |      |        |
| B           | J05-0735       | H.T | 10/28/05 | angles   | linear  | scale X    |     | dwg no   |                               | sheet 1 of 1 | size |        |
| C           | J06-0449       | H.T | 11/2/06  |  |         |            |     | JSA 96413  |                               |              | A4   |        |
|             |                |     |          | dr   | 11/2/06 |            | FCJ |  | type Product Customer Drawing |              |      |        |
|             |                |     |          | enr  | 11/2/06 |            |     |  |                               |              |      |        |
|             |                |     |          | chr  | 11/2/06 |            |     |  |                               |              |      |        |
|             |                |     |          | appd   | 11/2/06 |            |     |  |                               |              |      |        |
| sheet index | revision sheet | C   | 1        |  |         |            |     |  |                               |              |      | Rev. C |

SC-HLW06 form: A4 JSA96412

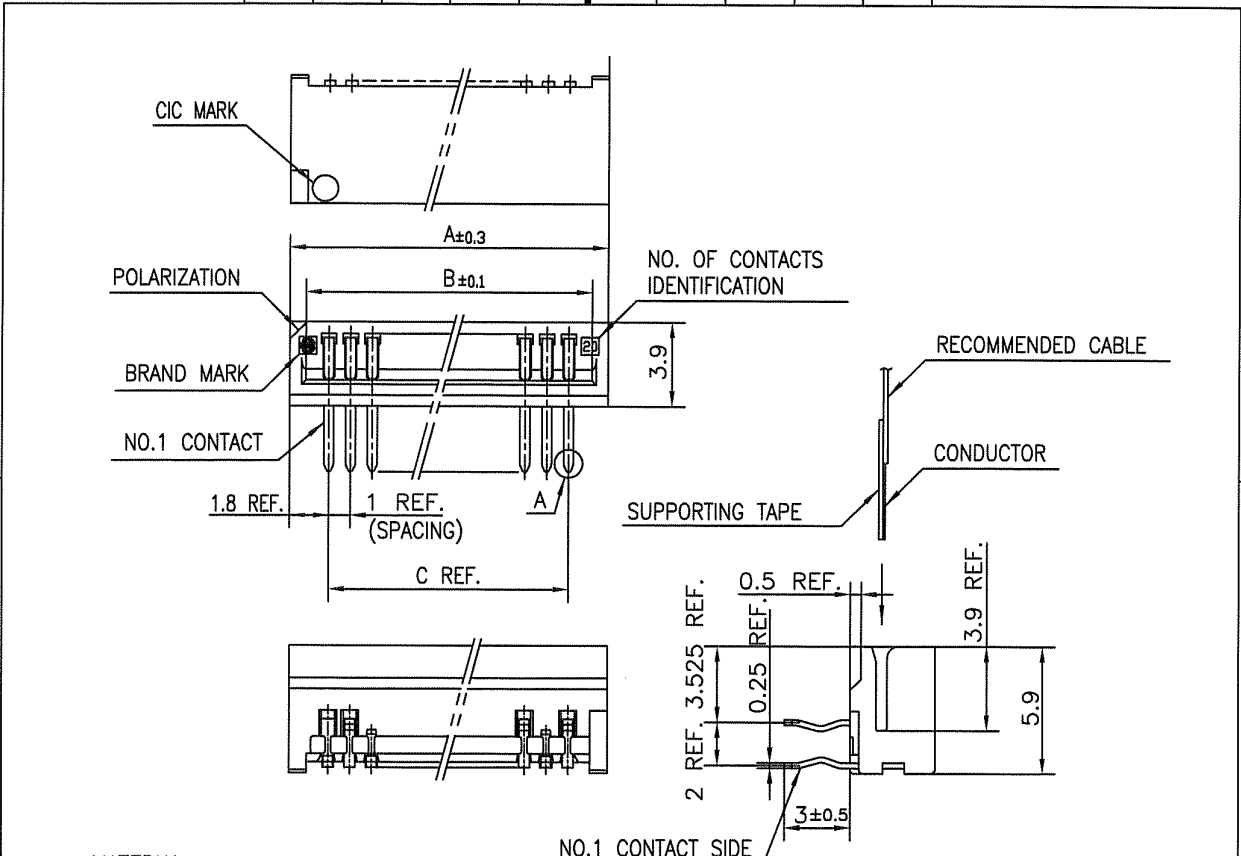


FCconnect.com

Copyright FCJ.







**MATERIAL**

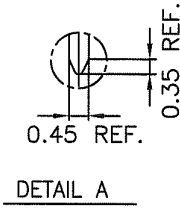
INSULATOR : PBT RESIN GLASS REINFORCED (UL94V-0)  
 COLOR : BLACK  
 CONTACT : PHOSPHOR BRONZE  
 PLATING : TIN

**NOTE**

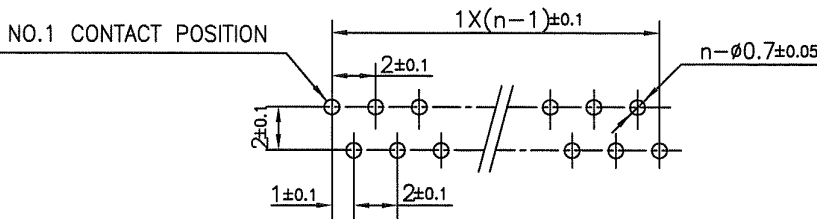
1. THIS PRODUCT IS RIGHT ANGLE TYPE CONNECTOR.
2. THIS PRODUCT MEETS EUROPEAN UNION DIRECTIVES AND OTHER COUNTRY REGULATIONS AS DESCRIBED IN GS-22-008.
3. THE HOUSING WILL WITHSTAND EXPOSURE TO 260°C PEAK TEMPERATURE FOR 10 SECONDS IN A WAVE SOLDER APPLICATION WITH A 1.6mm THICK CIRCUIT BOARD.

**RECOMMENDED PC BOARD**

THICKNESS : 1.2~1.6  
 HOLE PATTERN (COMPONENT SIDE)



n:NO.OF CONTACTS



|               |          |                |           |  |                        |            |         |  |                               |         |        |
|---------------|----------|----------------|-----------|--|------------------------|------------|---------|--|-------------------------------|---------|--------|
| mat'l. code - |          |                |           | surface 58 / tolerance ISO 1302 / ISO 406 / ISO 1101 |                        | projection |         | product family 58PF                                  |                               | CODE JP |        |
| ltr           | ecn no   | dr             | date      | tolerances unless otherwise specified                |                        |            |         | title  |                               |         |        |
| A             | J06-0238 | M.M            | 6/8/'06   | ±0.2   |                        |            |         | 1mm SPACING CONNECTOR FOR CIC (CAT NO. HLW__R-6D7LF) |                               |         |        |
| B             | J09-0255 | M.Y            | 2009-6-29 | angles   | linear                 | mm         |         |  |                               |         |        |
|               |          |                |           | dr   | M. YAMASHITA 2009-6-29 |            | scale X |  | dwg no sheet 1 of 1 size      |         |        |
|               |          |                |           | enr  | M. YAMASHITA 2009-6-29 |            | FCJ     |  | JSA 97169                     |         | A4     |
|               |          |                |           | chr  | S. W. 2009-6-29        |            |         |  | type Product Customer Drawing |         |        |
|               |          |                |           | appd   | S. W. 2009-6-29        |            |         |  |                               |         |        |
| sheet index   |          | revision sheet |           | B  |                        |            |         |  |                               |         | Rev. B |



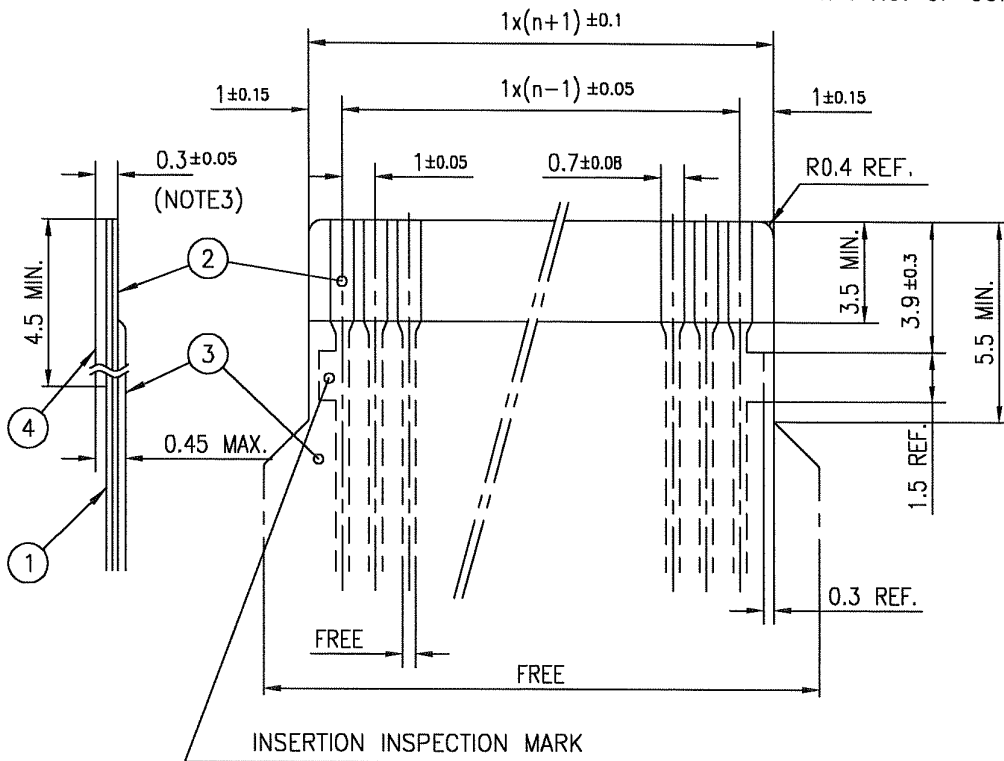
FCJconnect.com

Copyright FCJ.



RECOMMENDED CABLE (CIC)

n : NO. OF CONDUCTORS



| PT. NO. | DESCRIPTION     | MATERIAL                             | THICKNESS (μm) |     |
|---------|-----------------|--------------------------------------|----------------|-----|
| 1       | BASE FILM       | POLYESTER OR EQUIVALENT              | 75             | 25  |
| 2       | CONDUCTOR       | CARBON PASTE OVER SILVER PASTE       | 10 MIN.        |     |
| 3       | OVERLAY         | POLYIMIDE OR POLYESTER OR EQUIVALENT | —              |     |
| 4       | SUPPORTING TAPE | POLYESTER OR POLYIMIDE OR EQUIVALENT | 188            | 250 |

NOTES

1. NO BURR AT EACH PORTION.
2. NO PEELING IN COMMON USE.
3. TOTAL THICKNESS LIMIT OF EACH MATERIAL (INCLUDING ADHESIVE AGENT) IS SPECIFIED.

|             |                |     |         |                                       |                                  |                 |  |            |
|-------------|----------------|-----|---------|---------------------------------------|----------------------------------|-----------------|--|------------|
| mat'l. code |                |     |         | surface<br>ISO 1302 ✓                 | tolerance<br>ISO 406<br>ISO 1101 | projection<br>⊕ | product family<br>58PF/QF                                  | CODE<br>JP |
| ltr         | ecn no         | dr  | date    | tolerances unless otherwise specified |                                  | mm<br>↔         | title<br>RECOMMENDED CABLE (CIC)<br>(Cat. No. HLW__R/S-__) |            |
| AA          | J05-0270       | H.T | 5/11/05 | angles                                | linear                           |                 | dwg no<br>JSA 93626  |            |
| AB          | J06-0449       | H.T | 11/2/06 |                                       |                                  | scale<br>X      | sheet 1 of 1   | size<br>A4 |
|             |                |     |         | dr                                    | <i>H. Nakamura</i>               | FCJ             | type<br>Product Customer Drawing                           |            |
|             |                |     |         | enr                                   | <i>H. Nakamura</i>               |                 |  |            |
|             |                |     |         | chr                                   | <i>K. Shouji</i>                 |                 |  |            |
|             |                |     |         | appd                                  | <i>S. Nakamura</i>               |                 |  |            |
| sheet index | revision sheet | AB  | 1       |                                       |                                  |                 |  | Rev.<br>AB |

form: A4