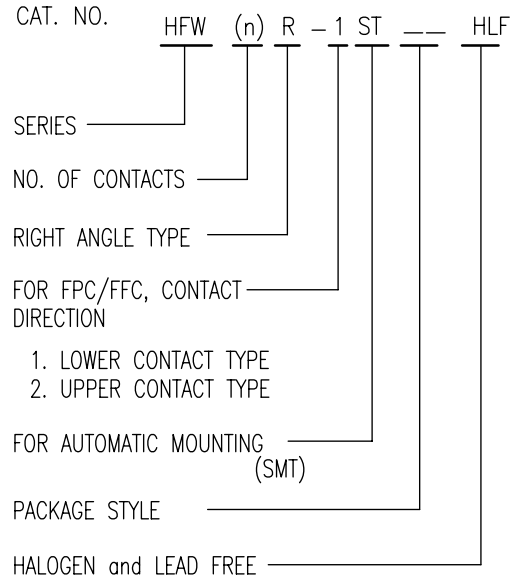




CAT. NO. & DIMENSIONS

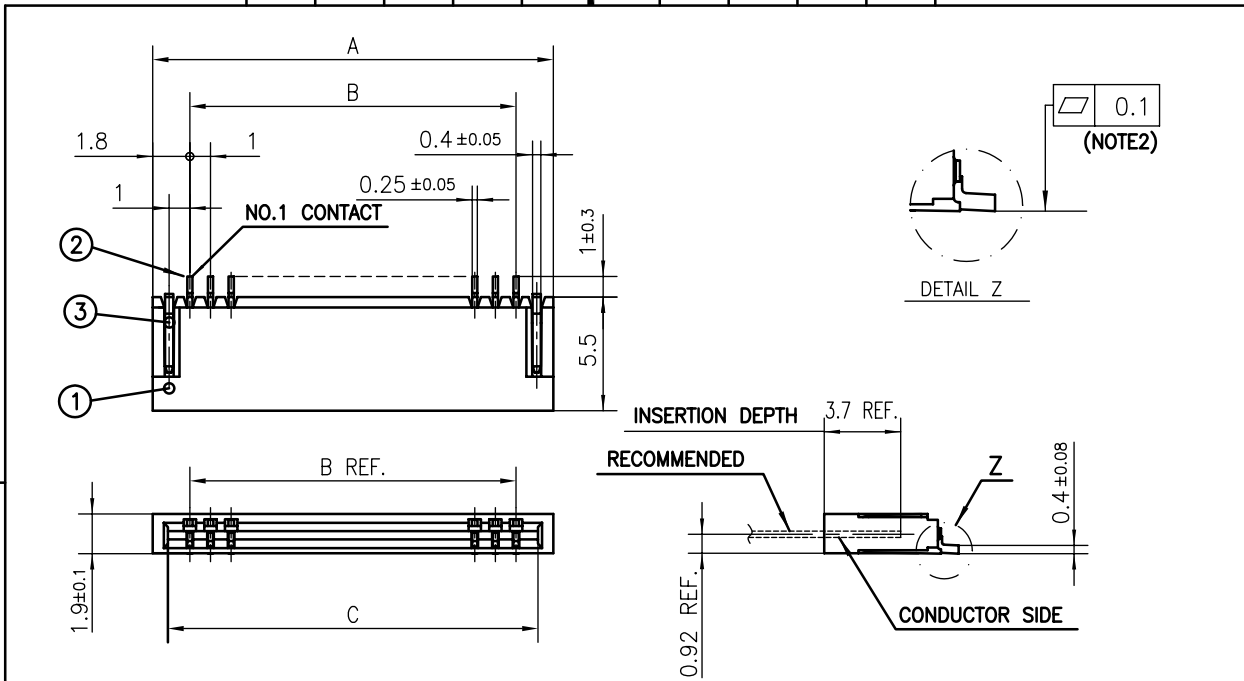
(NOTE3)	NO. OF CONTACTS (n)	CAT. NO.	DIMENSIONS (NOTE2)		
			A ± 0.2	B ± 0.2	C ± 0.1
	4	HFWR-1/2ST__HLF	6.6	3	5.14
	5	HFWR-1/2ST__HLF	7.6	4	6.14
	6	HFWR-1/2ST__HLF	8.6	5	7.14
	7	HFWR-1/2ST__HLF	9.6	6	8.14
	8	HFWR-1/2ST__HLF	10.6	7	9.14
	9	HFWR-1/2ST__HLF	11.6	8	10.14
	10	HFWR-1/2ST__HLF	12.6	9	11.14
	11	HFWR-1/2ST__HLF	13.6	10	12.14
	12	HFWR-1/2ST__HLF	14.6	11	13.14
	13	HFWR-1/2ST__HLF	15.6	12	14.14
	14	HFWR-1/2ST__HLF	16.6	13	15.14
	15	HFWR-1/2ST__HLF	17.6	14	16.14
	16	HFWR-1/2ST__HLF	18.6	15	17.14
	17	HFWR-1/2ST__HLF	19.6	16	18.14
	18	HFWR-1/2ST__HLF	20.6	17	19.14
	19	HFWR-1/2ST__HLF	21.6	18	20.14
	20	HFWR-1/2ST__HLF	22.6	19	21.14
	21	HFWR-1/2ST__HLF	23.6	20	22.14
	22	HFWR-1/2ST__HLF	24.6	21	23.14
	23	HFWR-1/2ST__HLF	25.6	22	24.14
	24	HFWR-1/2ST__HLF	26.6	23	25.14
	25	HFWR-1/2ST__HLF	27.6	24	26.14
	26	HFWR-1/2ST__HLF	28.6	25	27.14
	27	HFWR-1/2ST__HLF	29.6	26	28.14
*	28	HFWR-1/2ST__HLF	30.6	27	29.14
*	29	HFWR-1/2ST__HLF	31.6	28	30.14
	30	HFWR-1/2ST__HLF	32.6	29	31.14



NOTES

1. THIS PRODUCT IS THE CONNECTOR DESIGNED TO TERMINATE FPC/FFC AND COPE WITH AUTOMATIC MOUNTING (SMT).
2. SEE PART DRAWINGS FOR DIMENSIONS A~C.
3. PLEASE CONSULT US IN CASE OF USING PARTS WITH \* MARK.

mat'l. code		surface 58 ISO 1302 ✓		tolerance ISO 406 ISO 1101		projection		product family 58NF	
ltr ecn no dr date		tolerances unless otherwise specified		mm		title		CAT. NO. TABLE FOR 1mm SPACING SMT CONNECTOR (Cat. No. HFW__R-1/2ST__HLF)	
A		angles linear		scale		dwg no		sheet 2 of 9 size A4	
		dr H. TAKAKURA 06/10/23		FCI		10089213			
		enr DENNIS GOH 08/06/26				type Product Customer Drawing			
		chr DENNIS GOH 08/06/26							
		appd JOEY NG 08/06/26							
sheet index		revision sheet						Rev. A	



PT. NO.	PARTS NAME	MATERIAL	Q'TY	NOTE
1	HOUSING	PA6T RESIN GLASS REINFORCED (UL94V-0)	1	COLOR:BLACK (HALOGEN FREE)
2	CONTACT	PHOSPHOR BRONZE	n	PLATING:TIN
3	MOUNTING PLATE		2	(LEAD FREE)

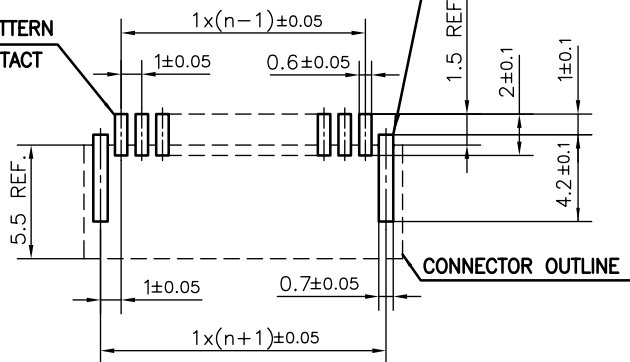
n : NO. OF CONTACTS

NOTES

1. THIS PRODUCT IS THE CONNECTOR DESIGNED TO TERMINATE FPC/FFC AND COPES WITH AUTOMATIC MOUNTING (SMT).
2. FLATNESS OF CONTACT TERMINAL FOR HOUSING MUST BE WITHIN TOLERANCE IN Z PORTION DETAILED DRAWING.
3. THIS PRODUCT IS LOWER CONTACT TYPE CONNECTOR.
4. THIS PRODUCT MEETS EUROPEAN UNION DIRECTIVES AND OTHER COUNTRY REGULATIONS AS DESCRIBED IN GS-22-008
5. THE HOUSING WILL WITHSTAND EXPOSURE TO 260°C PEAK TEMPERATURE FOR 10 SECONDS IN A REFLOW SOLDERING OVEN.

RECOMMENDED PC BOARD LAYOUT (COMPONENT SIDE)

BASIC PATTERN NO.1 CONTACT POSITION



mat'l. code		surface 58 ISO 1302		tolerance ISO 406 ISO 1101		projection		product family 58NF	
ltr ecn no dr date		tolerances unless otherwise specified		angles linear ±0.2		mm		title 1mm SPACING SURFACE MOUNT FPC/FFC CONNECTOR (Cat.No. HFW__R-1ST__HLF)	
A		dr H. TAKAKURA 06/10/23		enr DENNIS GOH 08/06/26		scale		dwg no sheet 3 of 9 size 10089213 A4	
		chr DENNIS GOH 08/06/26		appd JOEY NG 08/06/26		FCJ		type Product Customer Drawing	
sheet index		revision sheet						Rev. A	

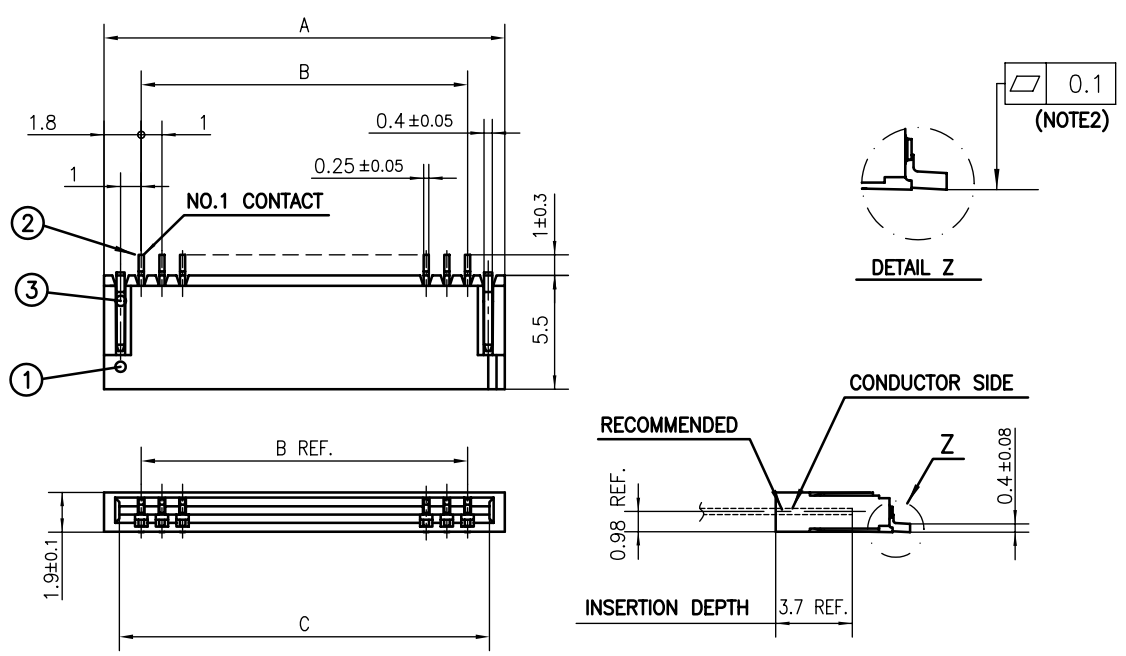
form: A4



FCIconnect.com

Copyright FCI.





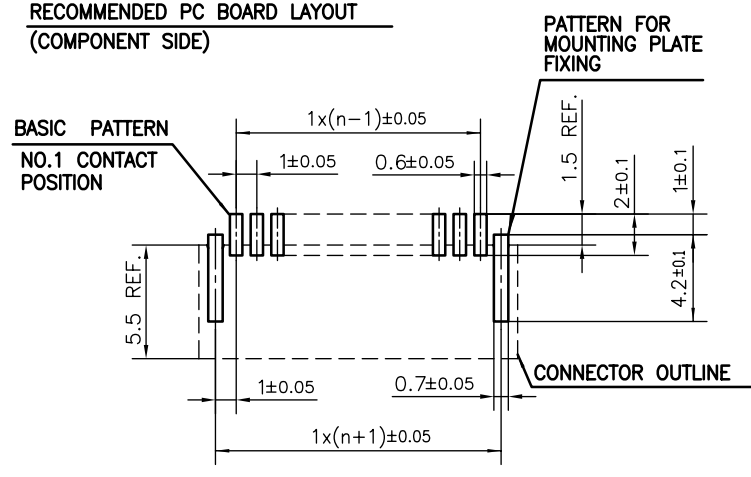
PT. NO.	PARTS NAME	MATERIAL	Q'TY	NOTE
1	HOUSING	PA6T RESIN GLASS REINFORCED (UL94V-0)	1	COLOR:BLACK (HALOGEN FREE)
2	CONTACT	PHOSPHOR BRONZE	n	PLATING:TIN
3	MOUNTING PLATE		2	(LEAD FREE)

n : NO. OF CONTACTS

NOTES

1. THIS PRODUCT IS THE CONNECTOR DESIGNED TO TERMINATE FPC/FFC AND COPE WITH AUTOMATIC MOUNTING (SMT).
2. FLATNESS OF CONTACT TERMINAL FOR HOUSING MUST BE WITHIN TOLERANCE IN Z PORTION DETAILED DRAWING.
3. THIS PRODUCT IS UPPER CONTACT TYPE CONNECTOR.
4. THIS PRODUCT MEETS EUROPEAN UNION DIRECTIVES AND OTHER COUNTRY REGULATIONS AS DESCRIBED IN GS-22-008
5. THE HOUSING WILL WITHSTAND EXPOSURE TO 260°C PEAK TEMPERATURE FOR 10 SECONDS IN A REFLOW SOLDERING OVEN.

RECOMMENDED PC BOARD LAYOUT (COMPONENT SIDE)

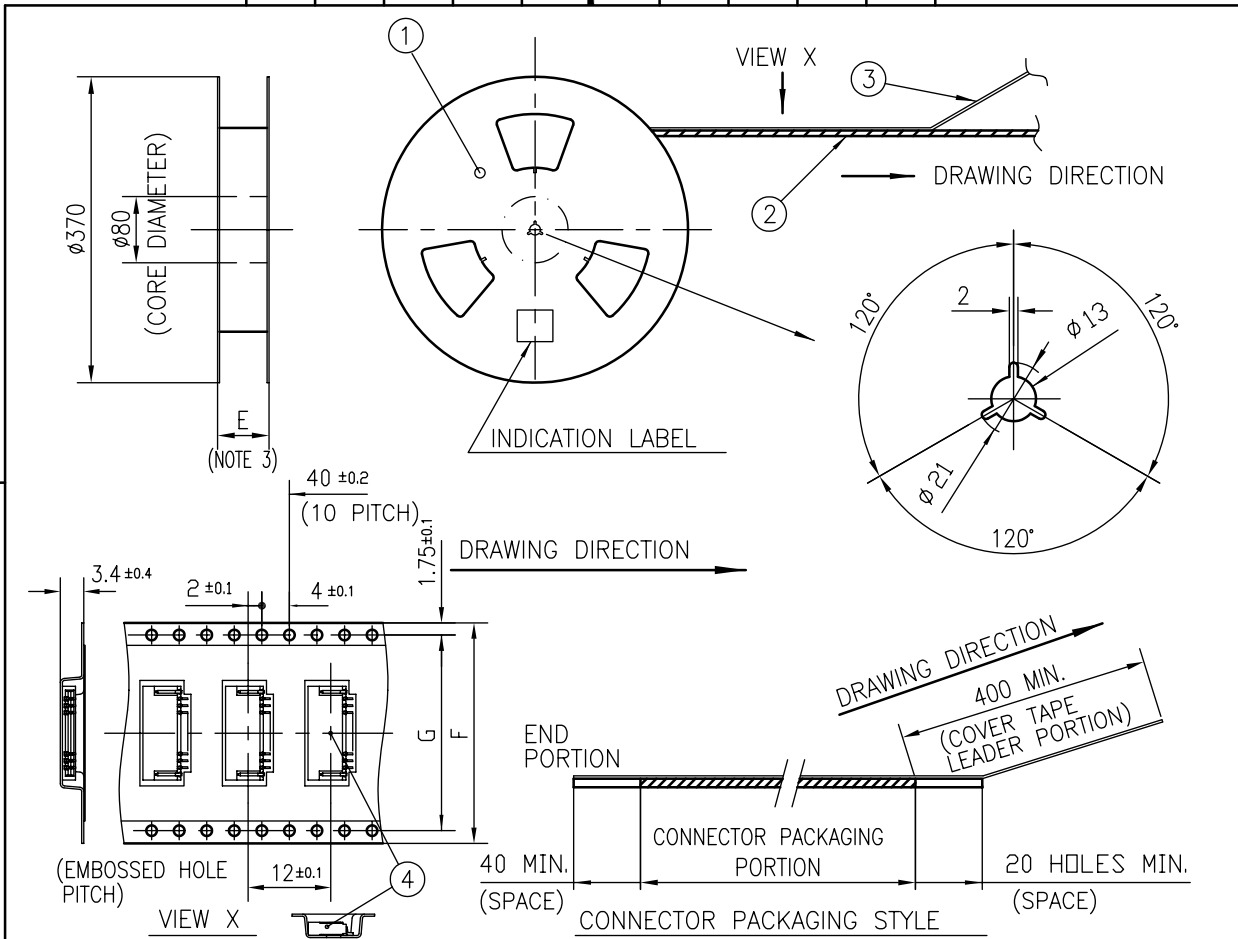


mat'l. code		surface 58 ISO 1302		tolerance ISO 406 ISO 1101		projection		product family 58NF	
ltr		ecn no		dr		date		title 1mm SPACING SURFACE MOUNT FPC/FFC CONNECTOR (Cat. No. HFW__R-2ST__HLF)	
A								mm	
				angles		linear		scale	
				dr		H. TAKAKURA		06/10/23	
				enr		DENNIS GOH		08/06/26	
				chr		DENNIS GOH		08/06/26	
				appd		JOEY NG		08/06/26	
sheet index		revision sheet						dwg no 10089213	
								sheet 4 of 9 size A4	
								type Product Customer Drawing	
								Rev. A	

form: A4

FCI  
 FCIconnect.com  
 Copyright FCI.





PT. NO.	PARTS NAME	CAT. NO.	MATERIAL	Q'TY	NOTE
1	REEL	_____	CARDBOARD	1	COLOR:WHITE
2	PLASTIC (EMBOSSED) TAPE	_____	PET	_____	COLOR:TRANSPARENCY
3	COVER	_____	POLYESTER	_____	COLOR:TRANSPARENCY
4	CONNECTOR	HFW__R-1ST__HLF	SEE ATTACHED DWG.	2000	LOWER CONTACT TYPE

NOTES

1. THIS IS PLASTIC TAPE PACKAGED CONNECTOR DESIGNED TO TERMINATE FPC/FFC AND COPES WITH AUTOMATIC MOUNTING (SMT).
2. SEE JIS C 0806 (PACKING OF ELECTRONIC COMPONENTS ON CONTINUOUS TAPES (SURFACE MOUNTING DEVICES)) FOR SHAPE AND DIMENSIONS OF PLASTIC (EMBOSSED) TAPE AND REEL.
3. E DIMENSION IS PORTION OF THE CORE.

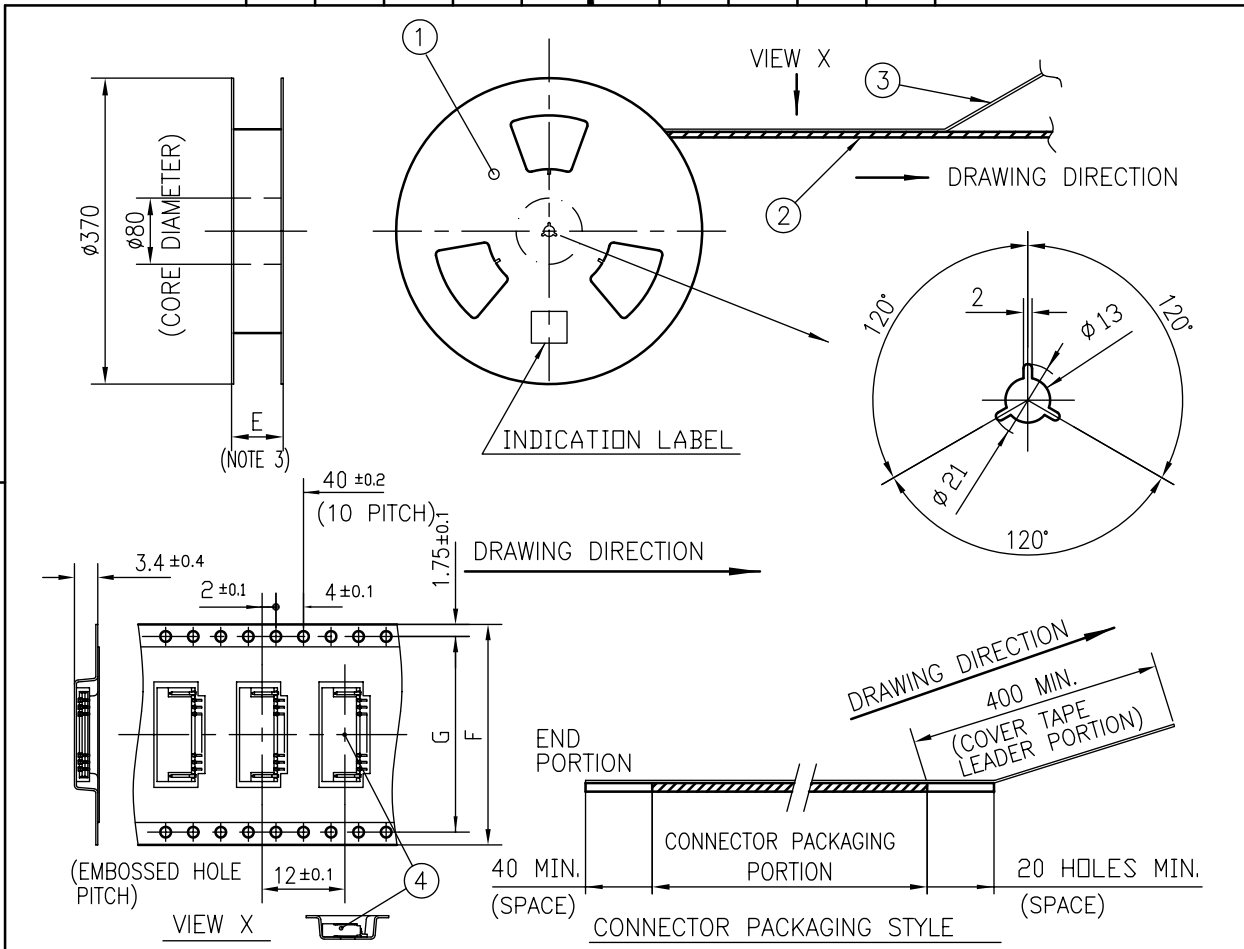
mat'l. code		surface 58 / tolerance ISO 1302 / ISO 406 / ISO 1101		projection		product family 58NF	
ltr ecn no dr date		tolerances unless otherwise specified		mm		title	
A		angles linear ±5°		scale		1mm SPACING SMT CONNECTOR (Cat.No. HFW__R-1STE1HLF)	
		dr H. TAKAKURA 06/10/23		FCI		dwg no sheet 6 of 9 size	
		enrg DENNIS GOH 08/06/26				10089213 A4	
		chr DENNIS GOH 08/06/26				type Product Customer Drawing	
		appd JOEY NG 08/06/26					
sheet index		revision sheet				Rev. A	

form: A4



FCIconnect.com

Copyright FCI.



PT. NO.	PARTS NAME	CAT. NO.	MATERIAL	Q'TY	NOTE
1	REEL	---	CARDBOARD	1	COLOR:WHITE
2	PLASTIC (EMBOSSED) TAPE	---	PET	---	COLOR:TRANSPARENCY
3	COVER	---	POLYESTER	---	COLOR:TRANSPARENCY
4	CONNECTOR	HFW__R-2ST_HLF	SEE ATTACHED DWG.	2000	UPPER CONTACT TYPE

NOTES

- THIS IS PLASTIC TAPE PACKAGED CONNECTOR DESIGNED TO TERMINATE FPC/FFC AND COPE WITH AUTOMATIC MOUNTING (SMT).
- SEE JIS C 0806 (PACKING OF ELECTRONIC COMPONENTS ON CONTINUOUS TAPES (SURFACE MOUNTING DEVICES)) FOR SHAPE AND DIMENSIONS OF PLASTIC (EMBOSSED) TAPE AND REEL.
- E DIMENSION IS PORTION OF THE CORE.

mat'l. code		surface 58 ISO 1302		tolerance ISO 406 ISO 1101		projection		product family 58NF	
ltr ecn no dr date		tolerances unless otherwise specified		angles linear ±5		mm		title	
A		±5°		scale		mm		1mm SPACING SMT CONNECTOR (Cat.No. HFW__R-2STE1HLF)	
sheet index		revision sheet		dr H. TAKAKURA 06/10/23		engr DENNIS GOH 08/06/26		dwg no sheet 7 of 9 size	
				chr DENNIS GOH 08/06/26		appd JOEY NG 08/06/26		10089213 A4	
								type Product Customer Drawing	

form: A4



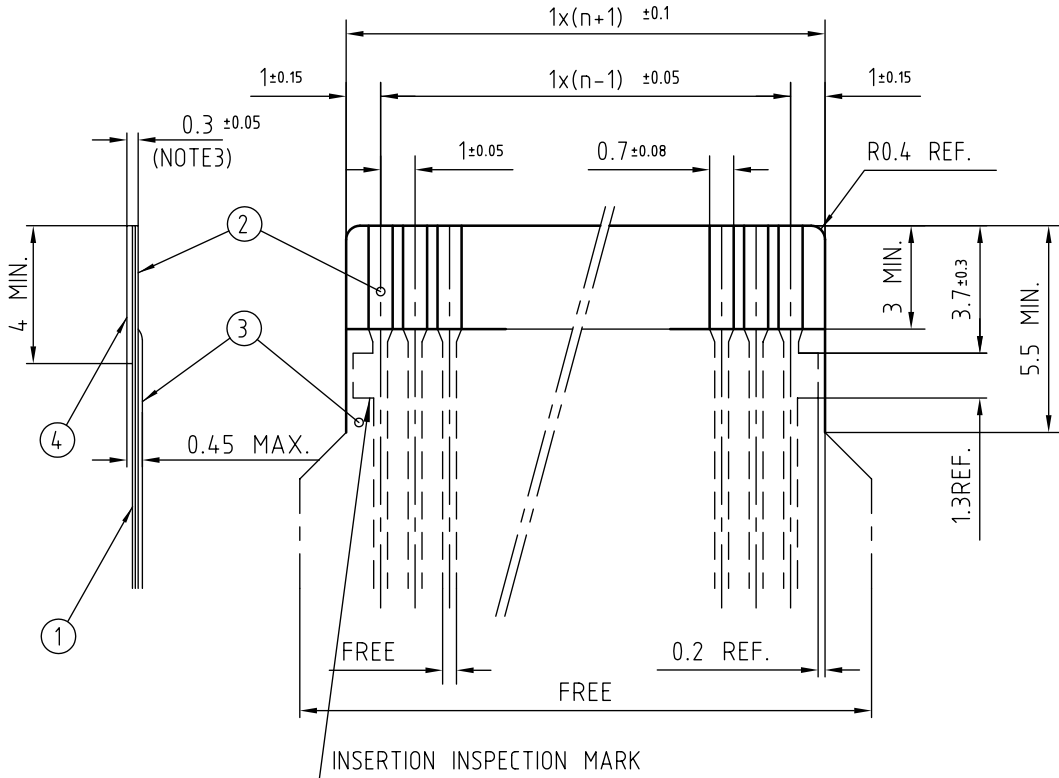
FCIconnect.com

Copyright FCI.



RECOMMENDED CABLE (FPC)

n : NO. OF CONDUCTORS



PT. NO.	DESCRIPTION	MATERIAL	THICKNESS (um)
1	BASE FILM	POLYIMIDE OR POLYESTER OR EQUIVALENT	25
2	CONDUCTOR	COPPER FOIL(PLATING : SOLDER 1um MIN.)	35
3	OVERLAY	POLYIMIDE OR POLYESTER OR EQUIVALENT	—
4	SUPPORTING TAPE	POLYESTER OR POLYIMIDE OR EQUIVALENT	188

NOTES

1. NO BURR AT EACH PORTION.
2. NO PEELING IN COMMON USE.
3. TOTAL THICKNESS LIMIT OF EACH MATERIAL (INCLUDING ADHESIVE AGENT) IS SPECIFIED.

mat'l. code		surface 58 / tolerance ISO 1302 / ISO 406 / ISO 1101		projection		product family 58NF		CODE JP	
ltr ecn no dr date		tolerances unless otherwise specified		mm		title			
A		angles linear		mm		RECOMMENDED CABLE (Cat. No. HFW__R-1/2__)			
		dr H. TAKAKURA 06/10/04		scale		dwg no 10089213		sheet 8 of 9 size A4	
		enr DENNIS GOH 08/06/26		FCI		type Product Customer Drawing			
		chr DENNIS GOH 08/06/26							
		appd JOEY NG 08/06/26							
sheet index		revision sheet						Rev. A	

form: A4



FCIconnect.com

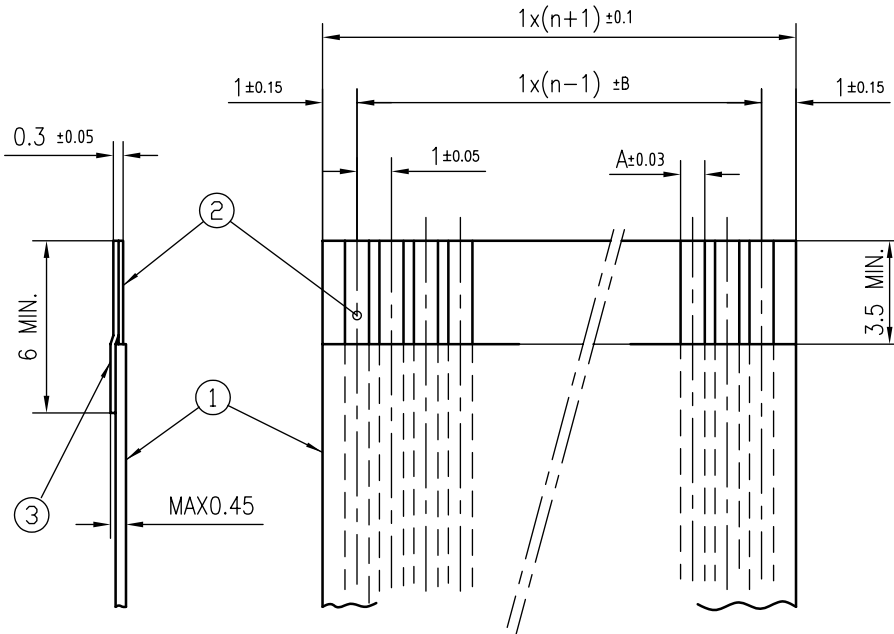
Copyright FCI.





RECOMMENDED CABLE (FFC)

n : NO. OF CONDUCTORS



(NOTE 3)	DIMENSION A	TOLERANCE B
1	0.7	0.1
2	0.6	0.07

PT. NO.	DESCRIPTION	MATERIAL	NOTE
1	INSULATOR	FLAME RESISTING POLYESTER OR EQUIVALENT	_____
2	CONDUCTOR	COPPER FOIL	PLATING:TIN OR SOLDER 1um MIN.
3	SUPPORTING TAPE	FLAME RESISTING POLYESTER OR EQUIVALENT	_____

NOTES

1. NO BURR AT EACH PORTION.
2. NO PEELING IN COMMON USE.
3. BOTH COMBINATION IS ALLOWED.

mat'l. code		surface 58 / tolerance ISO 1302 ✓ / ISO 406 / ISO 1101		projection		product family 58NF		
ltr		ecn no		dr		date		
A								
		tolerances unless otherwise specified		mm		title		
		angles linear		scale $\times$		RECOMMENDED CABLE (Cat. No. HFW__R-1/2__)		
		dr H. TAKAKURA 06/10/04				dwg no		
		enr DENNIS GOH 08/06/26				sheet 9 of 9		size
		chr DENNIS GOH 08/06/26				10089213		A4
		appd JOEY NG 08/06/26				type Product Customer Drawing		
sheet index		revision sheet				Rev. A		



Copyright FCI.