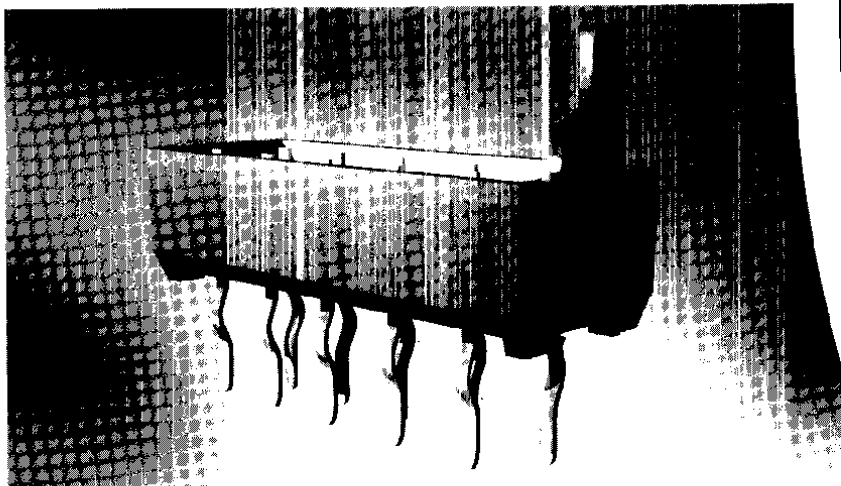


Male-on-Board Connector

Basic Part No. 21546

Notes:

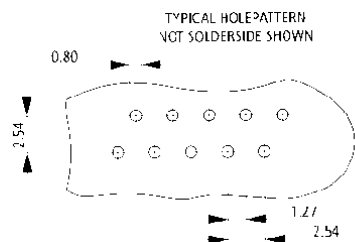
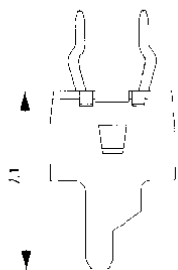
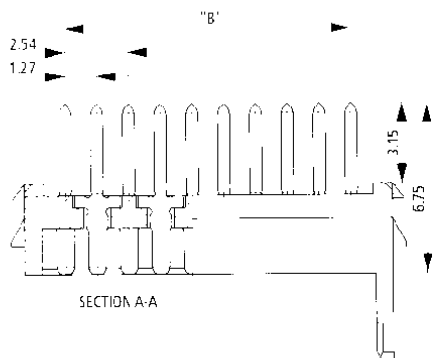
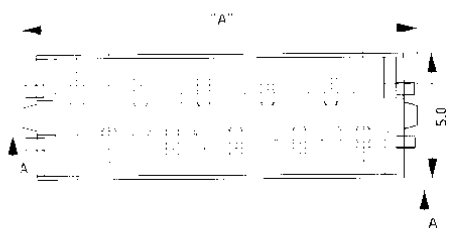
1. Connectors are always sideways mounted onto an adhesive tape.
2. Standard packaging quantity is 2500 connectors on a reel with a diameter of 600 mm.
3. At additional charge a special packaging option is available: 250 connectors on a reel with a diameter of 250 mm, packed in a dedicated dispenser box.



This male connector version is designed to be soldered onto PC Boards with a nominal thickness of 1.6 mm.

The solder legs are indented for firm retention of the connector in the PC Board.

The connector housing features a polarizing pin on one end for proper orientation of this connector version.



No. of Positions	Dimensions mm		Part Numbers	
	A	B	2500 Connectors/Reel	250 Connectors/Box
4	3.81	7.1	215464-4	7-215464-4
6	6.35	9.7	215464-6	7-215464-6
8	8.89	12.2	215464-8	7-215464-8
10	11.43	14.7	1-215464-0	8-215464-0
12	13.97	17.3	1-215464-2	8-215464-2
14	16.51	19.8	1-215464-4	8-215464-4
16	19.05	22.4	1-215464-6	8-215464-6
18	21.59	24.9	1-215464-8	8-215464-8
20	24.13	27.4	2-215464-0	9-215464-0