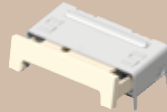


ZLR5-30-01-T-RA



ZF5-20-01-T-WT



ZF5-30-01-T-WT



(0,50mm) .0197"

ZLR5, ZF5 SERIES

FLAT FLEXIBLE CABLE (FFC) SOCKET

Mates with:
FJH

SPECIFICATIONS

For complete specifications and recommended PCB layouts see www.samtec.com?ZLR5

- Insulator Material:** Liquid Crystal Polymer
- Contact Material:** Phosphor Bronze
- Plating:** Sn over 50µ" (1,27µm) Ni
- Weld Tab:** Phosphor Bronze
- Operating Temp Range:** -55°C to +105°C
- RoHS Compliant:** Yes
- Processing:** Lead-Free Solderable: Yes
- SMT Lead Coplanarity:** (0,10mm) .004" max

Note: Some sizes, styles and options are non-standard, non-returnable.

ZLR5	NO. OF POSITIONS	LEAD STYLE	PLATING OPTION	RA	OTHER OPTION
	-20, -30 (Call Samtec for other sizes.)	-01 = Contacts on Top only	-T = Matte Tin		-TR = Tape & Reel

NO. OF POSITIONS	A	B
-20	(19,20) .756	(10,70) .421
-30	(24,20) .953	(15,70) .618

RUGGEDIZED
by SAMTEC
• Positive retention notch

Mates with:
FJH, ZFHF and flex cable with stiffener thickness of (0,30mm) .012"

SPECIFICATIONS

For complete specifications and recommended PCB layouts see www.samtec.com?ZF5

- Insulator Material:** High Temperature Nylon
- Contact Material:** Phosphor Bronze
- Plating:** Sn over 50µ" (1,27µm) Ni
- Weld Tab:** Phosphor Bronze
- Operating Temp Range:** -55°C to +105°C
- RoHS Compliant:** Yes
- Processing:** Lead-Free Solderable: Yes
- SMT Lead Coplanarity:** (0,10mm) .004" max

Note: Some sizes, styles and options are non-standard, non-returnable.

ZF5	NO. OF POSITIONS	LEAD STYLE	PLATING OPTION	WT	OPTION
	-10, -15, -20, -25, -30, -40, -43, -50 (Call Samtec for other sizes.)	-01 = Contact Bottom	-T = Matte Tin	-WT = Weld Tab	-TR = Tape & Reel Packaging

NO. OF POSITIONS	A
-10, -15, -20, -25	(5,49) .216
-30	(5,59) .220
-40, -43, -50	(5,69) .224

ALSO AVAILABLE

Vertical, Contact Top and other positions available. Call Samtec.

Due to technical progress, all designs, specifications and components are subject to change without notice.

WWW.SAMTEC.COM