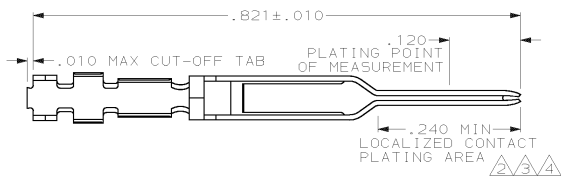


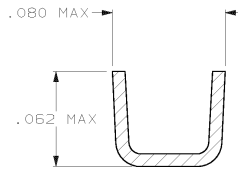
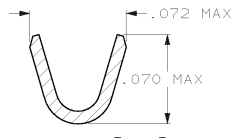
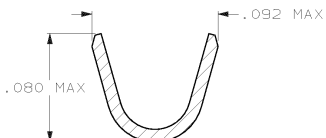
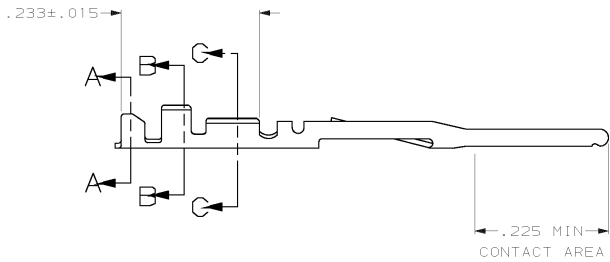
DRAWING MADE IN THIRD ANGLE PROJECTION

THIS DRAWING IS UNPUBLISHED. RELEASED FOR PUBLICATION .19
 © COPYRIGHT 19 BY AMP INCORPORATED. ALL INTERNATIONAL RIGHTS RESERVED.

LOC	DIST	P	F	ZONE	LTR	REVISIONS	DATE	APPD
GP	00					D	REVISED PER EC 0513-0205-03	JG



- 1 FINISH: .000100 MIN THK BRIGHT TIN LEAD OVER .000050 MIN THK NICKEL ON ENTIRE CONTACT.
- 2 FINISH: .000015 THK GOLD IN LOCALIZED CONTACT PLATING AREA AND GOLD FLASH IN OTHER AREAS OVER .000050 MIN NICKEL ON ENTIRE CONTACT.
- 3 FINISH: .000030 THK GOLD IN LOCALIZED CONTACT PLATING AREA AND GOLD FLASH IN OTHER AREAS OVER .000050 MIN NICKEL ON ENTIRE CONTACT.
- 4 FINISH: .000050 THK GOLD IN LOCALIZED CONTACT PLATING AREA AND GOLD FLASH IN OTHER AREAS OVER .000050 MIN NICKEL ON ENTIRE CONTACT.
- 5. FOR 22-26 AWG WIRE WITH AN INSULATION RANGE OF .040-.056 DIA.
- 6 FINISH: .000100 MIN THK TIN OVER .000050 MIN THK NICKEL ON ENTIRE CONTACT.



6	1-86557-9	1-86561-0
4	1-86557-4	86561-9
4	86557-7	86561-7
2	86557-6	86561-6
3	86557-4	86561-4
FINISH	REELED PART NO	PART NO

DO NOT SCALE PRINT. UNLESS SPECIFIED DIMENSIONS IN INCHES. TOLERANCES ON:		PART NO	
2 PLC DEC #	-	AMP AMP INCORPORATED Hanfburg, Pa. 17109	
3 PLC DEC #	.005		
ANGLES	# -	NAME	
MATERIAL	PHOS. BRONZE	CONTACT, PIN, .025 SQ ROUND WIRE, .100¢, FFC	
FINISH	SEE TABLE	SIZE	8:1
DR 6-27-89	J. GALLUCI	FSCM NO	00779
CHK 6-28-89	D.L. ROCKER	DRAWING NO	86561
APPD 6-29-89	G.D. MILLER	SHEET	1 OF 1
APPD 6-29-89	W.T. PAREKER	APPLICATION SPEC 114-16003	
PRODUCT SPEC	108-9024	WEIGHT -	

CUSTOMER DRAWING

19598

A