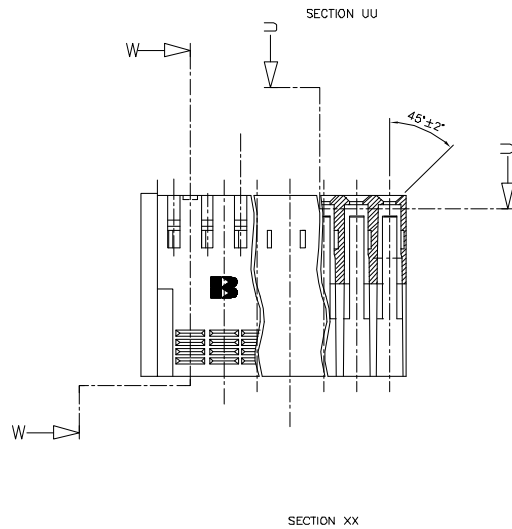
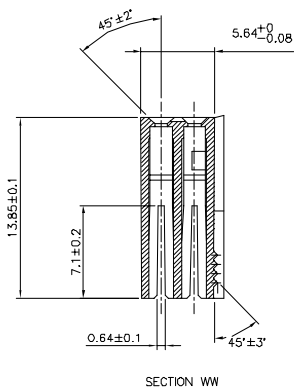
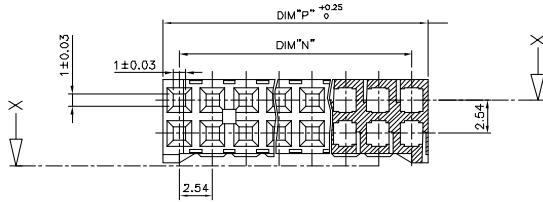


PRODUCT NUMBER
66987-0XXLF

WHEN NEEDED, SUFFIX LETTER "LF" INDICATES THE PRODUCT IS RoHS COMPLIANT, SEE NOTE 5



NOTES:

- 1 - MOLDING MATERIAL: PBT 30% GLASS FILLED, COLOUR: BLUE, FLAME RETARDANT, ACCORDING TO UL 94, CATEGORY V0.
 - 2 - OVER DASH NUMBER -008 ONLY THE FIRST AND LAST THREE POSITIONS MUST HAVE GROOVES ON TWO SIDES
 - 3 - THIS HOUSING IS INTENDED FOR USE WITH BERG TERMINAL # 76785-YXX AND BERG HEADERS # 76385-YXX OR 76383-YXX
 - 4 - FOR BERG DUFLEX CLINCHER APPLICATION DATA SEE SPECIFICATION TA-333 SHEET 213-10F1
 - 5 - RoHS COMPATIBLE PRODUCT SPECIFICATIONS
 - a - LABELING:
 - MEETS PACKAGING SPECS AS PER GS-14-920
 - b - LEGAL STATEMENT: SEE GS-22-008
- THE PRODUCT IS NOT INTENDED TO BE EXPOSED TO A MANUFACTURING SOLDER PROCESS.

CUSTOMER COPY FOR REFERENCE ONLY

matl. code	part no	date	revision	status	projection	product family
SEE NOTE 1	66987	08.07.10	1	Released	1st angle	VCC DR
lit	ecm	no	dr	date	status	revision
A	F90386	DLE	08.07.10	1	Linear	mm
B	F00499	JNC	03.09.13	1	Linear	mm
C	FD4-0347	DLE	04.12.10	1	Linear	mm
D	FD5-0188	DLE	05.04.07	1	Linear	mm
E	FD5-0236	DLE	06.06.24	1	Linear	mm
F	FD5-0286	DLE	05.11.07	1	Linear	mm
G	FD6-0224	DLE	04.07.07	1	Linear	mm
sheet	revision	G	F	F		
index	sheet	1	2			

