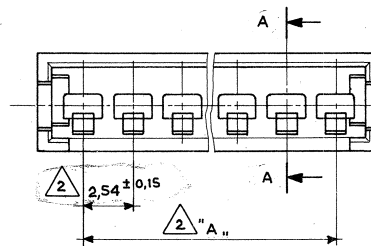
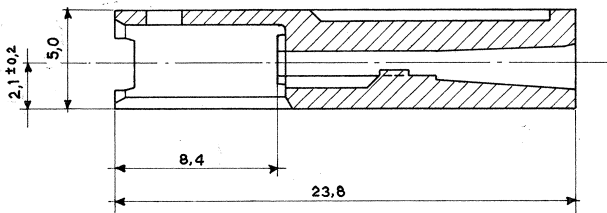


SCALA NON IMPEGNATIVA
(DO NOT SCALE)
DIMENSIONI IN
DIMENSIONS IN mm

METRIC

PROIEZIONE EUROPEA
(EUROPEAN PROJECTION)

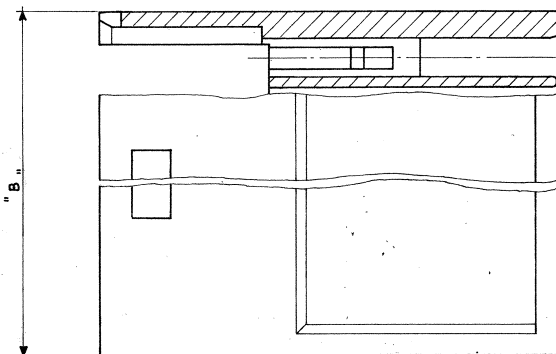
Sezione A-A
(Section)



Note: (Notes)

- 1 Noryl (UL 74-VI) Colore Nero (Black Colour).
- 2 Tolleranza non cumulativa. (Non-cumulative Tolerance).
- 3 PA 6.6 15% g.f. masterizzato ROSSO (PA 6.6 15% g.f. masterized - RED)

N° Pos.	Part. Number	Dim. "A"	Dim. "B"	Mat.
4	284072-1	7,62	12,5	3
2	284071-1	2,54	7,4	
22	280636	53,34	58,2	
15	280635	35,56	40,4	
12	280634	27,94	32,8	1
10	280633	22,86	27,7	
9	280632	20,32	25,1	
8	280631	17,78	22,6	
6	280630	12,70	17,5	
4	280629	7,62	12,5	
2	280628	2,54	7,4	



FINITURA / COLORE (FINISH / COLOUR)	MATERIALE (MATERIAL)	NUMERO (PART NUMBER)
CUSTOMER DWG. FOR REFERENCE ONLY	DISEGNO PER CLIENTE SOLO PER RIFERIMENTO	
THIS DRAWING IS UNPUBLISHED	RELEASE FOR PUBLICATION	
© COPYRIGHT 1986 BY AMP INCORPORATED, HARRISBURG, PA ALL INTERNATIONAL RIGHT RESERVED AMP PRODUCTS MAY BE COVERED BY U.S. AND FOREIGN PATENT AND/OR PATENT PENDING		
TOLLERANZE: SE NON DIVERSAMENTE SPECIFICATO (TOLERANCES UNLESS OTHERWISE SPECIFIED)	DIAM. ISOLANTE (INS DIA RANGE)	RANGO FILE (WIRE RANGE)
± 0,3		5:1
ANGOLI (ANGLES) ± 2°	AMP AMP ITALIA S.p.A. Corso F.lli Cervi, 15 COLLEGO (TORINO)	
H2 RICEVERE PER PUBBLICAZIONE (FOR REFERENCE ONLY)	DESCRIZIONE (DESCRIPTION) AMP MODU 1 Pin Housing, Single Row, Crimp Snap-In.	
H4 RICEVERE PER EC-STAMP (FOR REFERENCE ONLY)	LOC. SIZE (DWG NO.) 280628	REV. (SHEET) H2 1 (OF 1)
2 Revised note	1 A3 C- (Master Dwg.)	
1 Revised and Redrawn	REV. (APP.)	
REV. (REV. NO.)	DIS. (DATE)	DIS. (DATE)

REV. (REV. NO.)	DIS. (DATE)	DIS. (DATE)
1	86	86
2	86	86
H2	86	86
H4	86	86