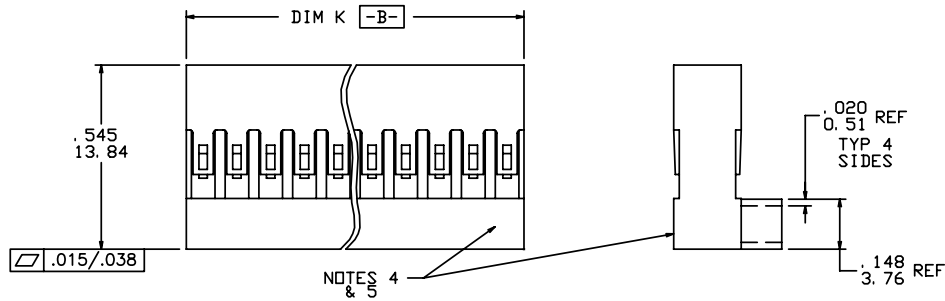
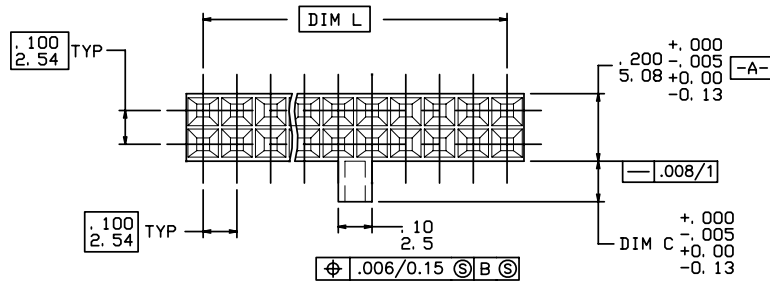


PRODUCT NUMBER  
SEE TABLE



NOTES:

1. PIN LENGTH TO BE .210/5.33 MIN RECOMMENDED PIN LENGTH IS .225±.015/5.72±0.38.
2. MOLDING MATERIAL: MODIFIED POLYPHENYLENE ETHER COLOR-BLACK UL 94V-0
3. MAY BE USED WITH PRODUCT LINE NO. 65268 STYLE M.
4. ALL MARKINGS FOR MILITARY PART NUMBERS ARE TO BE PER MIL-STD-1285. SEE TABULATION.
5. PLACE DESC PART NO. AND CAGE NO. ON PACKAGING LABEL. PRODUCT LENGTH IS TO SMALL TO MARK PART.
6. APPLICABLE SPECIFICATIONS: BUS-12-067: PRODUCT SPECIFICATION TA-75: CRIMPING INSTRUCTIONS (TERMINALS MUST BE CRIMPED PROPERLY FOR SATISFACTORY LATCHING). TA-531: INSTALLING AND REMOVING TERMINALS
7. ADD AN LF SUFFIX TO PART NUMBERS FOR PRODUCT THAT MEETS EUROPEAN UNION DIRECTIVES AND OTHER COUNTRY REGULATIONS AS DESCRIBED IN GS-22-008.
8. THE PRODUCT IS NOT INTENDED TO BE EXPOSED TO MANUFACTURING SOLDER PROCESS.
9. EUROPEAN CUSTOMERS SHOULD ORDER PART NUMBERS WITH AN 'E' SUFFIX AS SHOWN IN TABLE TO CONTINUE TO BE SUPPLIED BY THE EUROPEAN PLANT. SEE DRAWING 65846EUR.



mat'l code		surface		tolerance		projection		product family	
SEE NOTE 2		ASME Y14.5 ✓		ASME Y14.5				PV HOUSINGS	
ltr	ecn no	dr	date	tolerances unless otherwise specified		INCH/MM		title	
v	v06-0357	HTB	2006-04-17	angles	XXX/01/XXX/3			MINI LATCH HOUSING	
w	v06-0886	HTB	2006-08-31	0°±2'	XXX±005/XXX±B	scale 2.5:1		DOUBLE ROW POLARIZED	
					XXX±0020/XXX±051			dwg no	
		dr	T. BREWBAKER	2006-04-17				sheet 1 of 5	
		engr	T. BREWBAKER	2006-04-17				65846	
		chr	T. BREWBAKER	2006-04-17				A4	
		appd	T. BREWBAKER	2006-04-17				type	
sheet	revision	w	w	w	w	w		Product Customer Drawing	
index	sheet	1	2	3	4	5			

Copyright FCI



FCIconnect.com

PRODUCT NO. NOTE 7	NO. OF POS.	DIM K	DIM L	DIM C	EUROPEAN VERSION-NOTE 9
65846-001	2 X 12	1.200/30.48	1.100/27.94	.120/3.05	65846-001ELF
65846-002	2 X 15	1.500/38.10	1.400/35.56	.120/3.05	65846-002ELF
65846-003	2 X 19	1.900/48.26	1.800/45.72	.120/3.05	65846-003ELF
65846-004	2 X 22	2.200/55.88	2.100/53.34	.120/3.05	-
65846-005	2 X 27	2.700/68.58	2.600/66.04	.120/3.05	65846-005ELF
65846-006	2 X 10	1.000/25.40	.900/22.86	.120/3.05	65846-006ELF
65846-007	2 X 7	.700/17.78	.600/15.24	.120/3.05	65846-007ELF
65846-008	2 X 9	.900/22.86	.800/20.32	.120/3.05	65846-008ELF
65846-009	2 X 32	3.200/81.28	3.100/78.74	.120/3.05	-
65846-010	2 X 5	.500/12.70	.400/10.16	.120/3.05	65846-010ELF
65846-011	2 X 8	.800/20.32	.700/17.78	.120/3.05	65846-011ELF
65846-012	2 X 25	2.500/63.50	2.400/60.96	.120/3.05	65846-012ELF
65846-013	2 X 30	3.000/76.20	2.900/73.66	.120/3.05	-
65846-014	2 X 2	.200/5.08	.100/2.54	.120/3.05	65846-014ELF
65846-015	2 X 3	.300/7.62	.200/5.08	.120/3.05	65846-015ELF
65846-016	2 X 4	.400/10.16	.300/7.62	.120/3.05	65846-016ELF
65846-017	2 X 6	.600/15.24	.500/12.70	.120/3.05	-
65846-018	2 X 11	1.100/27.94	1.000/25.40	.120/3.05	-
65846-019	2 X 13	1.300/33.02	1.200/30.48	.120/3.05	-
65846-020	2 X 14	1.400/35.58	1.300/33.02	.120/3.05	-
65846-021	2 X 16	1.600/40.64	1.500/38.10	.120/3.05	-
65846-022	2 X 17	1.700/43.18	1.600/40.64	.120/3.05	-
65846-023	2 X 18	1.800/45.72	1.700/43.18	.120/3.05	-
65846-024	2 X 20	2.000/50.80	1.900/48.26	.120/3.05	-
65846-025	2 X 21	2.100/53.34	2.000/50.80	.120/3.05	-

mat'l. code SEE NOTE 2		surface ASME Y14.5 ✓		tolerance ASME Y14.5		projection 		product family PV HOUSINGS	
ltr	ecn no	dr	date	tolerances unless otherwise specified		INCH/MM		title MINI LATCH HOUSING DOUBLE ROW POLARIZED	
w				angles	XXX.01/XXX.3	scale 1:1		dwg no 65846	
				0°±2'	XXX.005/XXX.8			sheet 2 of 5	
					XXX.0020/XXX.051			size A4	
				dr	T. BREWBAKER 2006-04-17			type Product Customer Drawing	
				engr	T. BREWBAKER 2006-04-17				
				chr	T. BREWBAKER 2006-04-17				
				appd	T. BREWBAKER 2006-04-17				
sheet index	revision sheet								

form: A4mmXLC

PDM: Rev:W

STATUS:Released

Printed: Oct 09, 2006

Copyright FCI



FCIconnect.com

1 | 2

3 |

4

PRODUCT NO. NOTE 7	NO. OF POS.	DIM K	DIM L	DIM C	EUROPEAN VERSION—NOTE 9
65846-026	2 X 23	2.300/58.42	2.200/55.88	.120/3.05	—
65846-027	2 X 24	2.400/60.96	2.300/58.42	.120/3.05	—
65846-028	2 X 26	2.600/66.04	2.500/63.50	.120/3.05	—
65846-029	2 X 28	2.800/71.12	2.700/68.58	.120/3.05	—
65846-030	2 X 29	2.900/73.66	2.800/71.12	.120/3.05	—
65846-031	2 X 31	3.100/78.74	3.000/76.20	.120/3.05	—
65846-032	2 X 33	3.300/83.82	3.200/81.28	.120/3.05	—
65846-033	2 X 34	3.400/86.36	3.300/83.82	.120/3.05	—
65846-034	2 X 35	3.500/88.90	3.400/86.36	.120/3.05	—
65846-035	2 X 36	3.600/91.44	3.500/88.90	.120/3.05	—
65846-036	2 X 3	.300/7.62	.200/5.08	.080/2.03	—

mat'l. code SEE NOTE 2		surface ASME Y14.5 ✓		tolerance ASME Y14.5		projection 		product family PV HOUSINGS	
ltr	ecm no	dr	date	tolerances unless otherwise specified		INCH/MM		title MINI LATCH HOUSING DOUBLE ROW POLARIZED	
w				angles	XXX.01/XXX.3	scale 1:1		dwg no 65846 sheet 3 of 5 size A4	
				0°±2'	XXX.005/XXX.8	FCI		type Product Customer Drawing	
					XXX.0020/XXX.051				
		dr	T. BREWBAKER	2006-04-17					
		engr	T. BREWBAKER	2006-04-17					
		chr	T. BREWBAKER	2006-04-17					
		appd	T. BREWBAKER	2006-04-17					
sheet	revision								
index	sheet								

form: A4mmXLC

1 |

2 |

3 |

4

PDM: Rev:W

STATUS:Released

Printed: Oct 09, 2006

Copyright FCJ



FCJconnect.com

1 2

3

4

MILITARY PRODUCT NO. NOTE 7	MADE FROM	MARKING STYLE	DESC P/N	CAGE NO.
65846-001-MIL		DISCONTINUED		
65846-002-MIL		DISCONTINUED		
65846-003-MIL		DISCONTINUED		
65846-004-MIL		DISCONTINUED		
65846-005-MIL		DISCONTINUED		
65846-006-MIL		DISCONTINUED		
65846-007-MIL		DISCONTINUED		
65846-008-MIL		DISCONTINUED		
65846-009-MIL		DISCONTINUED		
65846-010-MIL		DISCONTINUED		
65846-011-MIL		DISCONTINUED		
65846-012-MIL		DISCONTINUED		
65846-013-MIL		DISCONTINUED		
65846-014-MIL		DISCONTINUED		
65846-015-MIL		DISCONTINUED		
65846-016-MIL		DISCONTINUED		
65846-017-MIL		DISCONTINUED		
65846-018-MIL		DISCONTINUED		
65846-019-MIL		DISCONTINUED		
65846-020-MIL		DISCONTINUED		
65846-021-MIL		DISCONTINUED		
65846-022-MIL		DISCONTINUED		
65846-023-MIL		DISCONTINUED		
65846-024-MIL		DISCONTINUED		
65846-025-MIL		DISCONTINUED		
65846-026-MIL		DISCONTINUED		
65846-027-MIL		DISCONTINUED		
65846-028-MIL		DISCONTINUED		
65846-029-MIL		DISCONTINUED		
65846-030-MIL		DISCONTINUED		
65846-031-MIL		DISCONTINUED		
65846-032-MIL		DISCONTINUED		
65846-033-MIL		DISCONTINUED		
65846-034-MIL		DISCONTINUED		
65846-035-MIL		DISCONTINUED		

mat'l. code		SEE NOTE 2		surface	tolerance	projection	product family	
lir	ecn no	dr	date	ASME Y14.5 ✓	ASME Y14.5		PV HOUSINGS	
w				tolerances unless otherwise specified		INCH/MM	title	
				angles	XXX.01/XX.3		MINI LATCH HOUSING	
				0°±2'	XXX.005/XXX.8	scale 1:1	DOUBLE ROW POLARIZED	
					XXX.0020/XXX.051		dwg no	
		dr	T. BREWBAKER	2006-04-17			sheet 4 of 5	
		engr	T. BREWBAKER	2006-04-17			65846	size
		chr	T. BREWBAKER	2006-04-17				A4
		appd	T. BREWBAKER	2006-04-17				
sheet	revision						type	
index	sheet						Product Customer Drawing	

form A4mmXc

1

2

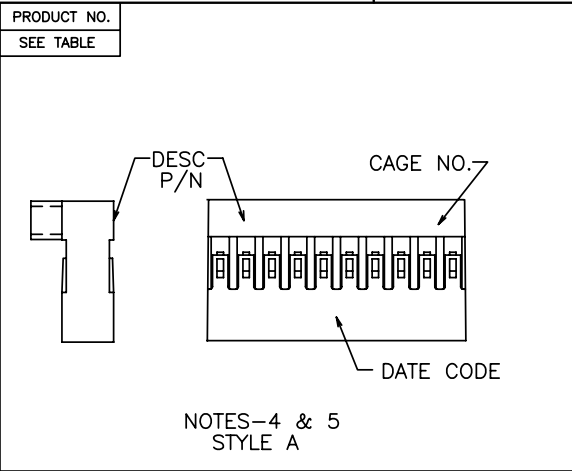
3

4

PDM: Rev:W

STATUS:Released

Printed: Oct 09, 2006



mat'l. code		SEE NOTE 2		surface	tolerance	projection	product family
				ASME Y14.5 ✓	ASME Y14.5		PV HOUSINGS
lt	ec	no	dr	date	tolerances unless otherwise specified	INCH/MM	title
w					angles	scale 1:1	MINI LATCH HOUSING DOUBLE ROW POLARIZED
					0°±2'		sheet 5 of 5 size
					dr T. BREWBAKER 2006-04-17		dwg no 65846
					engr T. BREWBAKER 2006-04-17		A4
					chr T. BREWBAKER 2006-04-17		type Product Customer Drawing
					appd T. BREWBAKER 2006-04-17		
sheet	revision						
index	sheet						