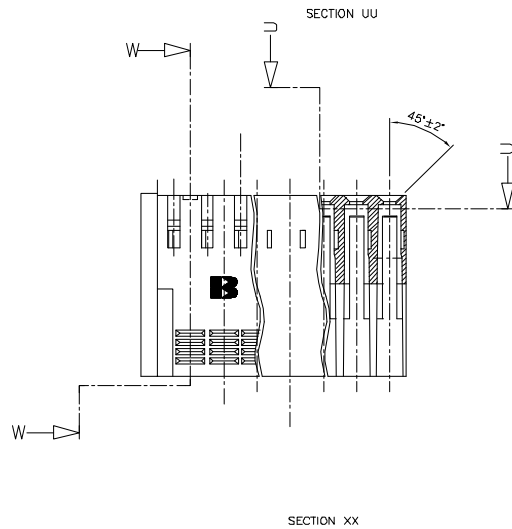
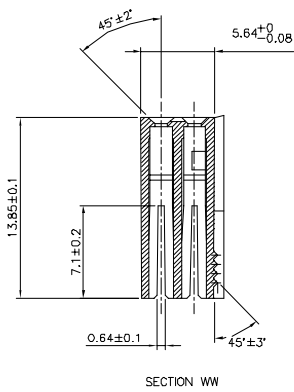
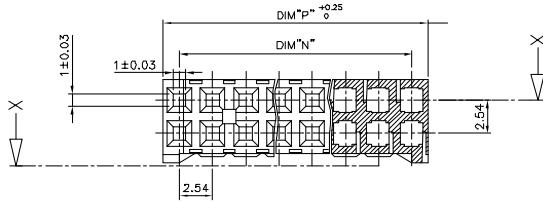


PRODUCT NUMBER  
66987-0XXLF

WHEN NEEDED, SUFFIX LETTER "LF" INDICATES THE PRODUCT IS RoHS COMPLIANT, SEE NOTE 5



NOTES:

- 1 - MOLDING MATERIAL: PBT 30% GLASS FILLED, COLOUR: BLUE, FLAME RETARDANT, ACCORDING TO UL 94, CATEGORY V0.
  - 2 - OVER DASH NUMBER -008 ONLY THE FIRST AND LAST THREE POSITIONS MUST HAVE GROOVES ON TWO SIDES
  - 3 - THIS HOUSING IS INTENDED FOR USE WITH BERG TERMINAL # 76785-YXX AND BERG HEADERS # 76385-YXX OR 76383-YXX
  - 4 - FOR BERG DUFLEX CLINCHER APPLICATION DATA SEE SPECIFICATION TA-333 SHEET 213-10F1
  - 5 - RoHS COMPATIBLE PRODUCT SPECIFICATIONS
    - a - LABELING:
      - MEETS PACKAGING SPECS AS PER GS-14-920
      - b - LEGAL STATEMENT: SEE GS-22-008
- THE PRODUCT IS NOT INTENDED TO BE EXPOSED TO A MANUFACTURING SOLDER PROCESS.

CUSTOMER COPY FOR REFERENCE ONLY

matl. code	part no	date	revision	status	specification	projection	product family
SEE NOTE 1	66987	08.07.10	1	Released	ISO 429	1st angle	VCC DR
lit	ecm	no	dr	date	revision	status	specification
A	F90386	08.07.10	1	Released	ISO 429	1st angle	VCC DR
B	F00499	02.09.13	1	Released	ISO 429	1st angle	VCC DR
C	F04-0347	04.12.10	1	Released	ISO 429	1st angle	VCC DR
D	F05-0188	05.04.07	1	Released	ISO 429	1st angle	VCC DR
E	F05-0236	06.06.24	1	Released	ISO 429	1st angle	VCC DR
F	F05-0286	05.11.07	1	Released	ISO 429	1st angle	VCC DR
G	F06-0224	04.07.07	1	Released	ISO 429	1st angle	VCC DR
sheet	revision	G	F				
index	sheet	1	2				

FCI CONFIDENTIAL



FCIconnect.com

FCIconnect.com

PRODUCT NUMBER	NUMBER OF POS.	DIM"N"	DIM"P"
66987-002(LF)	2 x 02	2.54	5.00
66987-003(LF)	2 x 03	5.08	7.54
66987-004(LF)	2 x 04	7.62	10.08
66987-005(LF)	2 x 05	10.16	12.62
66987-006(LF)	2 x 06	12.70	15.16
66987-007(LF)	2 x 07	15.24	17.70
66987-008(LF)	2 x 08	17.78	20.24
66987-009(LF)	2 x 09	20.32	22.78
66987-010(LF)	2 x 10	22.86	25.32
66987-011(LF)	2 x 11	25.40	27.86
66987-012(LF)	2 x 12	27.94	30.40
66987-013(LF)	2 x 13	30.48	32.94
66987-014(LF)	2 x 14	33.02	35.48
66987-015(LF)	2 x 15	35.56	38.02
66987-016(LF)	2 x 16	38.10	40.56
66987-017(LF)	2 x 17	40.64	43.10
66987-018(LF)	2 x 18	43.18	45.64
66987-019(LF)	2 x 19	45.72	48.18
66987-020(LF)	2 x 20	48.26	50.72
66987-021(LF)	2 x 21	50.80	53.26
66987-022(LF)	2 x 22	53.34	55.80
66987-023(LF)	2 x 23	55.88	58.34
66987-024(LF)	2 x 24	58.42	60.88
66987-025(LF)	2 x 25	60.96	63.42
66987-026(LF)	2 x 26	63.50	65.96
66987-027(LF)	2 x 27	66.04	68.50
66987-028(LF)	2 x 28	68.58	71.04
66987-029(LF)	2 x 29	71.12	73.58
66987-030(LF)	2 x 30	73.66	76.12
66987-031(LF)	2 x 31	76.20	78.66
66987-032(LF)	2 x 32	78.74	81.20
66987-033(LF)	2 x 33	81.28	83.74
66987-034(LF)	2 x 34	83.82	86.28
66987-035(LF)	2 x 35	86.36	88.82
66987-036(LF)	2 x 36	88.90	91.36

part code	surface	tolerance	projection	product family
SEE NOTES SHEET 1	ISO 1802	ISO 401 ISO 402	1st	VCC DR
litr techn no   dr   date	tolerance unless otherwise specified			title
E POS-023M DUE 05.06.24	angles	0.2 x		DUFLEX
F POS-022M DUE 06.07.07	Linear	0.02 0x	mm	HOUSING DOUBLE ROW
	dr   D   LEGRAND	0.004 0.00x	scale N/A	dwg no
	engr   P   NIZZI	06.07.13		66987
	chr   D   LEGRAND	06.07.13		sheet 2 of 2
	appd   P   NZ	06.07.13		size
sheet index	revision sheet			Az
				type
				CUSTOMER Drawing

PDM: Rev:G STATUS:Released Printed: Jun 06, 2009