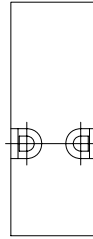
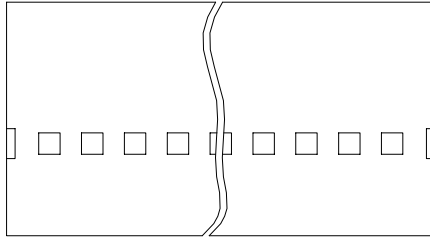


Tous droits strictement réservés. Reproduction ou communication à des tiers interdite sous quelque forme que ce soit sans autorisation écrite du propriétaire. Propriété de © FCI. Droits de reproduction FCI.

All rights strictly reserved. Reproduction or issue to third parties in any form whatever is not permitted without written authority from the proprietor. Property of FCI. Copyright FCI.

PRODUCT NUMBER
SEE TABLE

.545
13.84



NOTES:

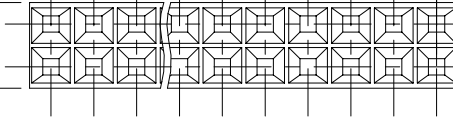
- ① MOLDING MATERIAL: NORYL OR XYRON
FLAME RETARDANT PER UL-94V-0
COLOR: BLACK
- 2 PIN LENGTH TO BE .210/5.33 MIN
RECOMMENDED PIN LENGTH IS
.225±.015/5.72±.38.
3. QUANTITY OF RETENTION RODS IS
TWO(2) PER HOUSING.
- ④. RETENTION ROD MATERIAL: STREN
NYLON, .030/.76 DIAMETER.
5. PACKAGE PER BUS-14-095.
- ⑥. ADD AN LF SUFFIX TO PART NUMBERS FOR PRODUCT
THAT MEETS EUROPEAN UNION DIRECTIVES AND OTHER
COUNTRY REGULATIONS AS DESCRIBED IN GS-22-008.
7. THIS PRODUCT IS NOT INTENDED TO BE EXPOSED
TO MANUFACTURING SOLDER PROCESSES.

DIM K MAX

-X-

DIM L

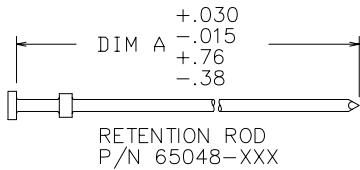
.050⁺.005
-.010
1.27⁺.13
-.25



.200⁺.000
-.015
5.08⁺.00
-.38

.100
2.54

.100 REF
2.54
PIN CENTERS WITH
PV TERMINALS INSTALLED



mat'l. code		NOTE 1 & 4				tolerances unless otherwise specified		CUSTOMER COPY		FCI www.fciconnect.com	
ltr	ecn no	dr	date		.xx ±.01/.xx±.3	projection	title				
A	V30801	PDP	05/11/93	linear	.xxx ±.005/.xxx±.13		MINI-ROD HOUSING D.R.				
B	V60473	MDF	04/01/96		.xxx ±.0020/.xxx±.051		.100/2.54 x .100/2.54 CC				
C	V91206	BKB	07/06/99	angles	0° ±2°		product family		code		
D	V03-1336	PJ	01/22/04	dr	M.FETROW 07/20/92		MINI ROD HOUSING		213		
E	V05-0718	TAB	7/29/05	engr	TAJ HANNA 07/17/92	size		sheet			
				chr	TAJ HANNA 07/17/92	dwg no		1 of 3			
				appd	TAJ HANNA 07/17/92	scale		A 92652			
sheet index	revision sheet	E	E	E		3:1					
		1	2	3							

cage code
22526

ACAD

PDM: Rev:E


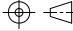
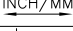
STATUS: Released

Printed: Aug 04, 2005

Tous droits strictement réservés. Reproduction ou communication à des tiers interdite sous quelque forme que ce soit sans autorisation écrite du propriétaire. Propriété de c FCI. Droits de reproduction FCI.

All rights strictly reserved. Reproduction or issue to third parties in any form whatever is not permitted without written authority from the proprietor. Property of FCI. Copyright FCI.

PRODUCT NO NOTE 6	NO. OF POSITIONS	DIM K	DIM L	RETENTION ROD P/N	RETENTION ROD LENGTH DIM A
92652-001		UNASSIGNED	UNASSIGNED	UNASSIGNED	UNASSIGNED
-002	4	.200/5.08	.100/2.54	65048-040	1.300/33.02
-003	6	.300/7.62	.200/5.08	-040	1.300/33.02
-004	8	.400/10.16	.300/7.62	-040	1.300/33.02
-005	10	.500/12.70	.400/10.16	-040	1.300/33.02
-006	12	.600/15.24	.500/12.70	-040	1.300/33.02
-007	14	.700/17.78	.600/15.24	-040	1.300/33.02
-008	16	.800/20.32	.700/17.78	-040	1.300/33.02
-009	18	.900/22.86	.800/20.32	-040	1.300/33.02
-010	20	1.000/25.40	.900/22.86	-026	2.300/58.42
-011	22	1.100/27.94	1.000/25.40	-026	2.300/58.42
-012	24	1.200/30.48	1.100/27.94	-026	2.300/58.42
-013	26	1.300/33.02	1.200/30.48	-026	2.300/58.42
-014	28	1.400/35.58	1.300/33.02	-026	2.300/58.42
-015	30	1.500/38.10	1.400/35.56	-026	2.300/58.42
-016	32	1.600/40.64	1.500/38.10	-026	2.300/58.42
-017	34	1.700/43.18	1.600/40.64	-026	2.300/58.42
-018	36	1.800/45.72	1.700/43.18	-026	2.300/58.42
-019	38	1.900/48.26	1.800/45.72	-026	2.300/58.42
-020	40	2.000/50.80	1.900/48.26	-013	3.450/87.63
-021	42	2.100/53.34	2.000/50.80	-013	3.450/87.63
-022	44	2.200/55.88	2.100/53.34	-013	3.450/87.63
-023	46	2.300/58.42	2.200/55.88	-013	3.450/87.63
-024	48	2.400/60.96	2.300/58.42	-013	3.450/87.63
92652-025	50	2.500/63.50	2.400/60.96	65048-013	3.450/87.63

mat'l. code		tolerances unless otherwise specified		CUSTOMER COPY		 www.fciconnect.com	
ltr	ecn no	dr	date	linear	.XX ±.01/.X±.3	projection	title
E					.XXX ±.0020/.XXX±.13		MINI-ROD HOUSING D.R.
				angles	.XXX ±.0020/.XXX±.051		.100/2.54 x .100/2.54 CC
				dr	0° ±2°	INCH/MM	product family
				enrg	M.FETROW 07/20/92	scale	MINI ROD HOUSING
				chr	TAJ HANNA 07/17/92	1:1	size
				appd	TAJ HANNA 07/17/92		dwg no
sheet index	revision sheet						A
							92652
							code
							22526
							sheet
							213
							2 of 3

1 | 2

3 |

4

ACAD

PDM: Rev:E

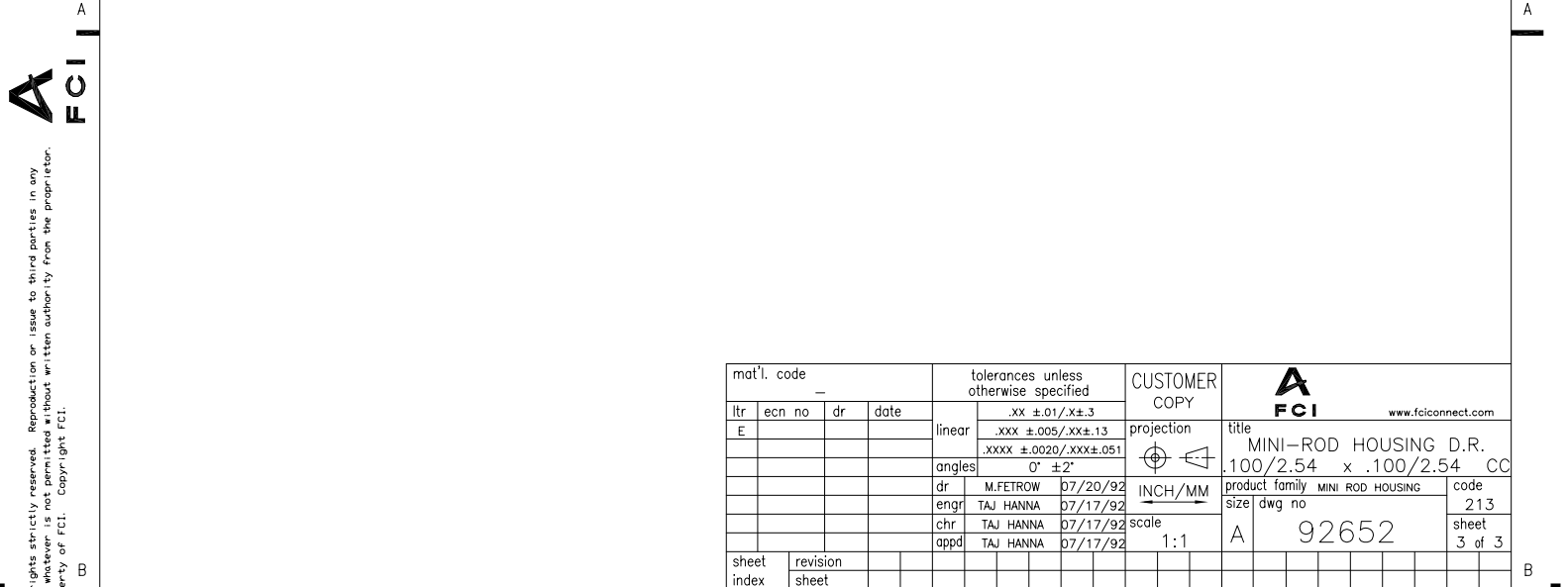
STATUS: Released


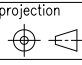
Printed: Aug 04, 2005

Tous droits strictement reserves. Reproduction ou communication a des tiers interdite sous quelque forme que ce soit sans autorisation écrite du propriétaire. Propriete de c FCI. Droits de reproduction FCI.

All rights strictly reserved. Reproduction or issue to third parties in any form whatever is not permitted without written authority from the proprietor. Property of FCI. Copyright FCI.

PRODUCT NO NOTE 6	NO. OF POSITIONS	DIM K	DIM L	RETENTION ROD P/N	RETENTION ROD LENGTH DIM A
92652-026	52	2.600/66.04	2.500/63.50	65048-013	3.450/87.63
-027	54	2.700/68.58	2.600/66.04	-013	3.450/87.63
-028	56	2.800/71.12	2.700/68.58	-013	3.450/87.63
-029	58	2.900/73.66	2.800/71.12	-013	3.450/87.63
-030	60	3.000/76.20	2.900/73.66	-005	4.650/118.11
-031	62	3.100/78.74	3.000/76.20	-005	4.650/118.11
-032	64	3.200/81.28	3.100/78.74	-005	4.650/118.11
-033	66	3.300/83.82	3.200/81.28	-005	4.650/118.11
-034	68	3.400/86.36	3.300/83.82	-005	4.650/118.11
-035	70	3.500/88.90	3.400/86.36	-005	4.650/118.11
92652-036	72	3.600/91.44	3.500/88.90	65048-005	4.650/118.11



mat'l. code		tolerances unless otherwise specified		CUSTOMER COPY		 www.fciconnect.com	
ltr	ecn no	dr	date	linear	.xx ±.01/.x±.3	projection	
E					.xxx ±.005/.xxx±.13		
				angles	.xxx ±.0020/.xxx±.051	INCH/MM	title
				dr	0° ±2°	scale	MINI-ROD HOUSING D.R.
				enrg	M.FETROW 07/20/92	1:1	.100/2.54 x .100/2.54 CC
				chr	TAJ HANNA 07/17/92		product family
				appd	TAJ HANNA 07/17/92		MINI ROD HOUSING
sheet index	revision sheet						size
							dwg no
							A
							92652
							code
							22526
							sheet
							213
							3 of 3

ACAD PDM: Rev:E STATUS: Released Printed: Aug 04, 2005