

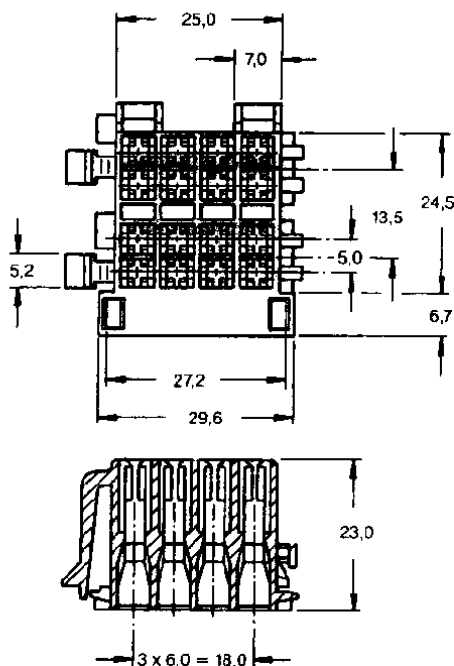
Junior Timer- und Junior Power Timer-Gehäuse für Autoradio-Anschluß nach ISO-TC 22/WG 5 (Fortsetzung)

tyco Electronics

Junior Timer and Junior Power Timer Housings for Car Radio Application according to ISO-TC 22/WG 5 (continued)

Typ A + B

16polig:
(auf Anfrage)



Type A + B

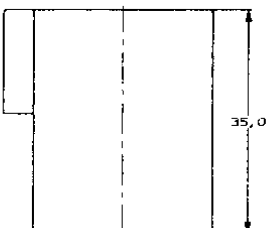
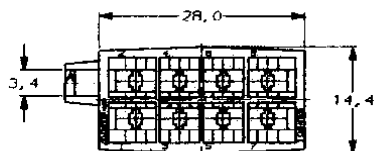
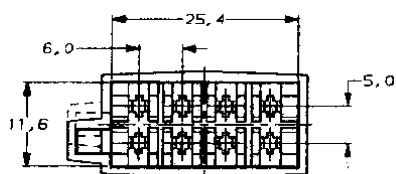
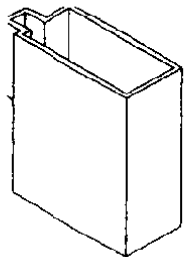
16 Positions:
(on request)

8pol. Flachstecker-Gehäuse:

Best.-Nr. **106455-3**, grau
Best.-Nr. **106455-4**, braun

8 Positions Tab Housing:

Part No. **106455-3**, grey
Part No. **106455-4**, brown



10poliges Flachstecker-Gehäuse:

Best.-Nr. **106456-1**, schwarz

10 Positions Tab Housing:

Part No. **106456-1**, black

