

# Wire to Board Connectors

## Mini-Universal MATE-N-LOK Connectors

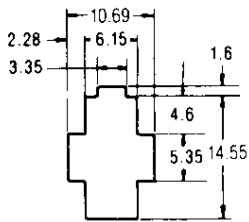
### Wire Application Side

#### Housings (Cont'd)

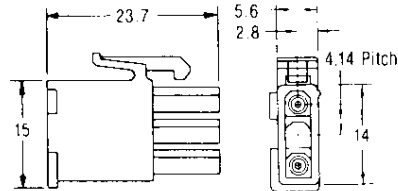
#### 3 Circuits

(For Free-Hanging and Panel Mount Applications)

Material : 66 Nylon

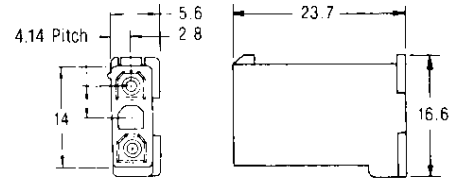


Cap Housing Panel Cutout



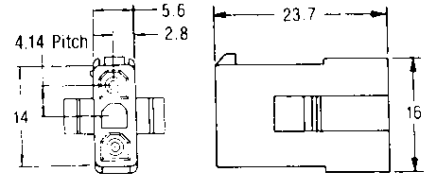
Plug

Part No. : 172166-1 UL94V-0  
Part No. : 172337-1 UL94V-2



Cap (Free-Hanging)

Part No. : 172234-1 UL94V-0  
Part No. : 172344-1 UL94V-2



Cap (Panel Mount)

Part No. : 172158-1 UL94V-0  
Part No. : 172329-1 UL94V-2

Note : Housing colors are all natural. Other colors, red, green, blue and black, are also available. When ordering, attach appropriate dash numbers as follows.

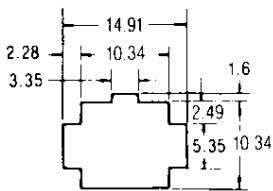
(Red) : 1-□-2 (Green) : 1-□-5 (Blue) : 1-□-6 (Black) : 1-□-9

#### 4 Circuits

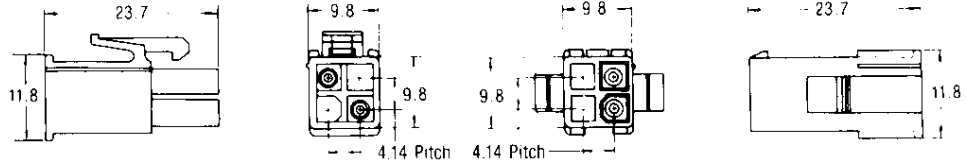
(For Panel Mount Applications)

Material : UL94V-0 and 94V-2 rated, Nylon

Housing colors are same as other positions except reinforced type.



Cap Housing Panel Cutout

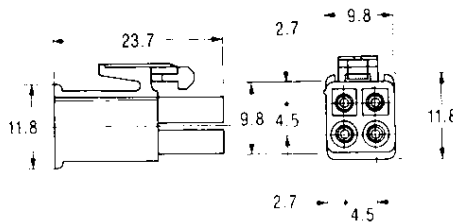


Plug

Part No. : 172167-1 UL94V-0  
Part No. : 172338-1 UL94V-2

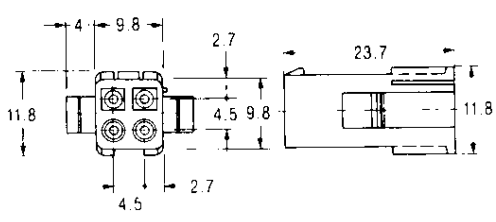
Cap

Part No. : 172159-1 UL94V-0  
Part No. : 172330-1 UL94V-2



Plug (Reinforced Type)

Part No. : 173937-1 UL94V-2 Natural  
Part No. : 1-173937-8 UL94V-2 Gray



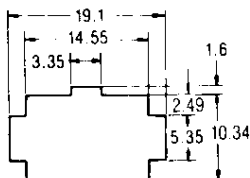
Cap (Reinforced Type)

Part No. : 1-173938-8 UL94V-2 Gray

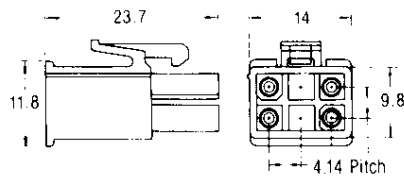
#### 6 Circuits

(For Panel Mount Applications)

Material : UL94V-0 and 94V-2 rated, Nylon

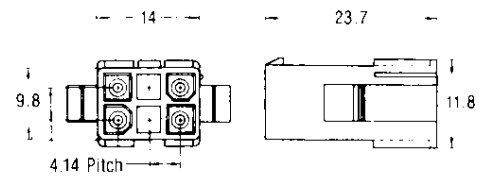


Cap Housing Panel Cutout



Plug

Part No. : 172168-1 UL94V-0  
Part No. : 172339-1 UL94V-2



Cap

Part No. : 172160-1 UL94V-0  
Part No. : 172331-1 UL94V-2

Note : Housing colors are all natural. Other colors, red, green, blue and black, are also available. When ordering, attach appropriate dash numbers as follows.

(Red) : 1-□-2 (Green) : 1-□-5 (Blue) : 1-□-6 (Black) : 1-□-9