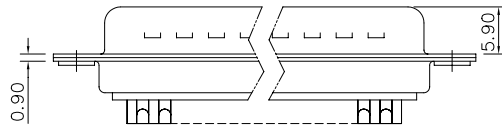
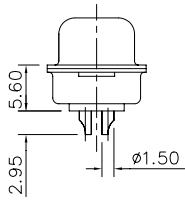
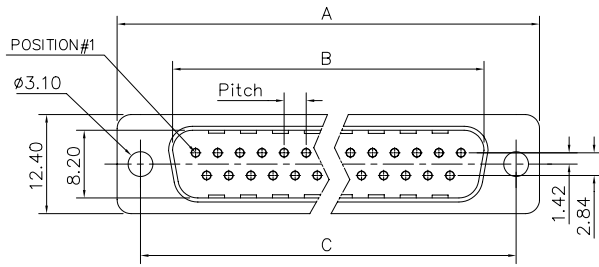


This document is the property of Amphenol Corporation and is delivered on the express condition that it is not to be disclosed, reproduced or used, in whole or in part, for manufacture or sale by anyone other than Amphenol Corporation without the prior consent, & that no right is granted to disclose or to use any information in this document.



# Customer drawing

DIM.S SHELL	A	B	C	Pitch
9	30.70	16.80	25.00	2.74
15	39.00	25.10	33.30	2.74
25	52.90	38.80	47.00	2.77
37	69.20	55.30	63.50	2.77

REVISIONS				
SYM	ECN	DESCRIPTION	DATE	APPROVED
1			12/26/07	

### D-SUB TECHNICAL DATA

SHELL : Steel 2.5um(100u") min tin over 1.25um(50u") min nickel  
 BODY : Glass filled thermoplastic.  
 CONTACTS : Flame retardant to UL94 V-0 Color Black  
 Brass.  
 0.1um(4u") min gold over 1.25um(50u") min nickel  
 ELECTRICAL : Voltage rating : 300 V RMS at 50 Hz  
 Current rating 7.5A.  
 Insulation resistance >5000 M Ohms  
 Contact resistance 20 mOhms max.  
 CLIMATIC : Temperature range -55 °C up to 85°C  
 Damp heat 21 days(40 °C-95% HR)  
 MARKING : Amphenol-...(Series No.)  
 Commercial reference  
 Manufacturing date

### PRODUCT CODE

**L 717D X XX P**

L: RoHS Compliance

Contact type:  
P: Male

Configuration: 09,15,25,37

717D: tinned shell +  
dimples for plug

Shell Size :E,A,B,C

UNLESS OTHERWISE SPECIFIED		APPROVAL	DATE
TOLERANCES		DRAWN	Christine.cui 12/26/07
.X +/-	U.S. 0.50	CHECKED	Hk.wang 12/26/07
.XX +/-	METRIC 0.30	CHECKED	
.XXX +/-	0.20		
FRACTIONS +/-			
ANGLES +/-	Z'		
FOR MATERIALS AND FINISHES SEE NOTES		DRAWING FILE :	
REMOVE SHARP EDGES		ANGLE OF PROJECTION	
DIMENSIONS		SIZE	
U.S.	TOLERANCES	A4	
METRIC	MM	DRAWING NO. C L717DXXXX	
		SCALE	NONE
		SHEET 1 OF 1	

Amphenol®

TITLE  
machined contacts connector, D series

REV. 1