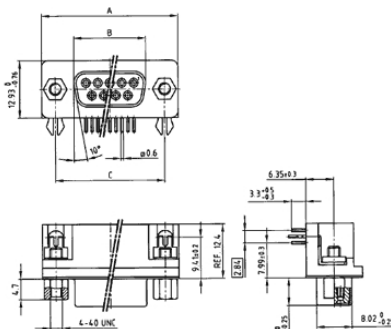


D-Sub Connector
Solder pin angled .318"
stamped contacts
with threaded lock and clip

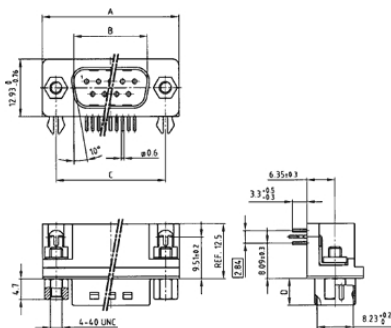
Directive 2002/95/EC
„RoHS“
Compliant

(click on the schematic(s) for a more detailed view)

Socket connector



Plug connector



Dimension for Socket Connectors			
No. of Pos.	A _{-0.75}	B _{-0.25}	C
9	31.19	16.46	25.00 ^{+0.12} _{-0.12}
15	39.52	24.79	33.30 ^{+0.15} _{-0.10}
25	53.42	38.50	47.04 ^{+0.13}
37	69.70	54.96	63.50 ^{+0.13}

Dimension for Plug Connectors				
No. of Pos.	A _{-0.75}	B ^{+0.25}	C	D _{-0.30}
9	31.19	16.79	25.00 ^{+0.12} _{-0.12}	6.12
15	39.52	25.12	33.30 ^{+0.15} _{-0.10}	6.12
25	53.42	38.84	47.04 ^{+0.13}	5.99
37	69.70	55.30	63.50 ^{+0.13}	5.99

Part Numbers

No. of Pos.	Socket connector tin -plated	
	Non RoHS Compliant	RoHS Compliant
9	302 A 11249 X	DLS1XS5AK40X
15	302 A 11259 X	DLS2XS5AK40X
25	302 A 11269 X	DLS3XS5AK40X
37	302 A 11279 X	DLS4XS5AK40X

No. of Pos.	Plug connector tin -plated with ground indent	
	Non RoHS Compliant	RoHS Compliant
9	301 A 10939 X	DLS1XP5AK40X
15	301 A 10949 X	DLS2XP5AK40X
25	301 A 10959 X	DLS3XP5AK40X
37	301 A 10969 X	DLS4XP5AK40X



REG.-Nr. 40000440



File #: E202784



File #: LR115000