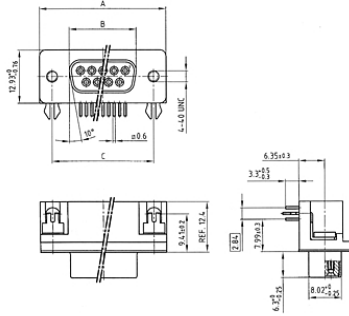


D-Sub Connector
Solder pin angled .318"
stamped contacts
with threaded insert and clip

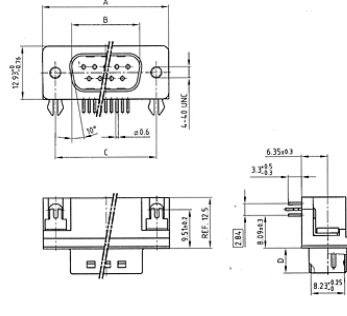


(click on the schematic(s) for a more detailed view)

Socket connector



Plug connector



Socket Connector

No. of pos.	A - 0,76	B - 0,25	C
09	31,19	16,46	25,00 + 0,12 - 0,13
15	39,52	24,79	33,30 + 0,15 - 0,10
25	53,42	38,50	47,04 ± 0,13
37	69,70	54,96	63,50 ± 0,13

Plug Connector

No. of pos.	A - 0,76	B + 0,25	C	D - 0,30
09	31,19	16,79	25,00 + 0,12 - 0,13	6,12
15	39,52	25,12	33,30 + 0,15 - 0,10	6,12
25	53,42	38,84	47,04 ± 0,13	5,99
37	69,70	55,30	63,50 ± 0,13	5,99

Part Numbers

No. of Pos.	Socket connector tin plated	
	Non RoHS Compliant	RoHS Compliant
09	302 A 11339 X	DLS1XS5AK38X
15	302 A 11349 X	DLS2XS5AK38X
25	302 A 11359 X	DLS3XS5AK38X
37	302 A 11369 X	DLS4XS5AK38X

No. of Pos.	Plug connector tin plated with ground indent	
	Non RoHS Compliant	RoHS Compliant
09	301 A 11029 X	DLS1XP5AK38X
15	301 A 11039 X	DLS2XP5AK38X
25	301 A 11049 X	DLS3XP5AK38X
37	301 A 11059 X	DLS4XP5AK38X

Clip for PCB Ø 3.1 mm ± 0.1 mm, PCB-thickness = 1.6 mm

