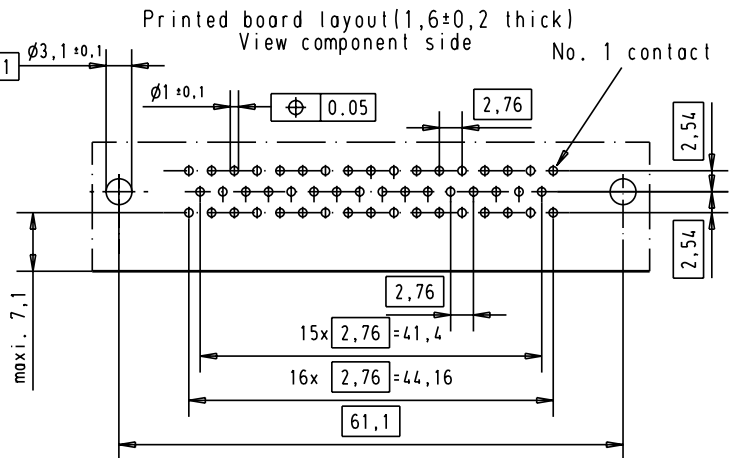
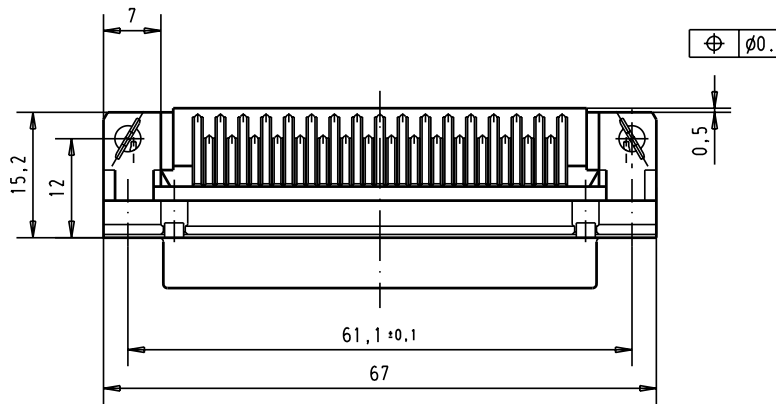
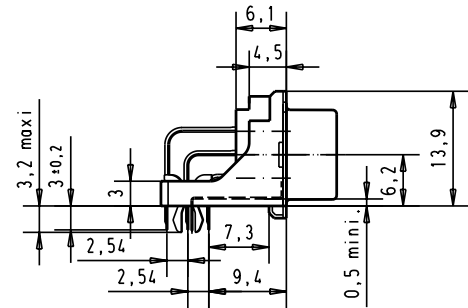
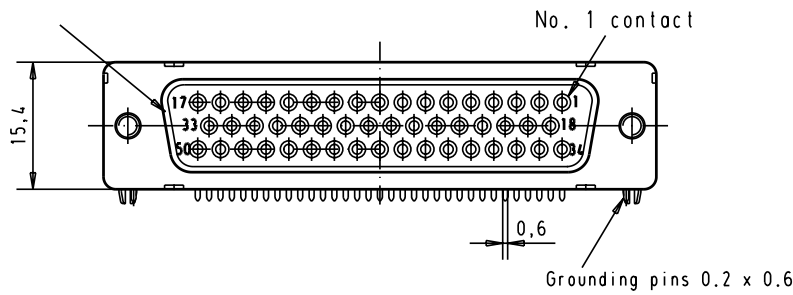




Alle Rechte vorbehalten/ All rights reserved

Mating face according to MIL-C-24308 / DIN 41 652 / CECC 75301-802



Mounting force on Printed board : 25 - 80 N

09 66 552 6615	M3	2					Del.	Name	 All Dim. in mm Orig. Size DIN A 4	D-Sub female low profile 50 poles with solder pins, nuts, board lock and grounding pins	Maßstab/ Scale 1,5:1	
09 66 552 7615	M3	3					Detail.	23-NOV-01				JB
09 66 552 5615	M3	0,76 µm Au					Insp.					
09 66 552 6616	4-40 UNC	2					Stand.					
09 66 552 7616	4-40 UNC	3	31084	04/SEP/02	YT		HARTING EURL F-95972 Paris			TB 09 66 552 X61x	Blatt/ Page 2	
09 66 552 5616	4-40 UNC	0,76 µm Au	29733	23-NOV-01	JB							
Part number	nut thread	Performance level	Mod.	Del.	Name					Sub.		