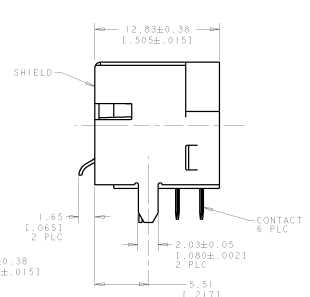
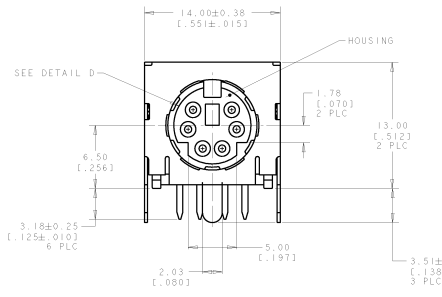
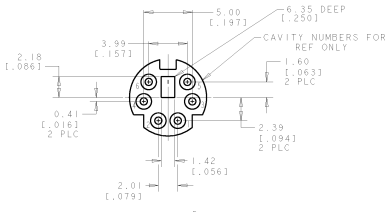
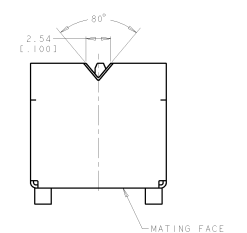
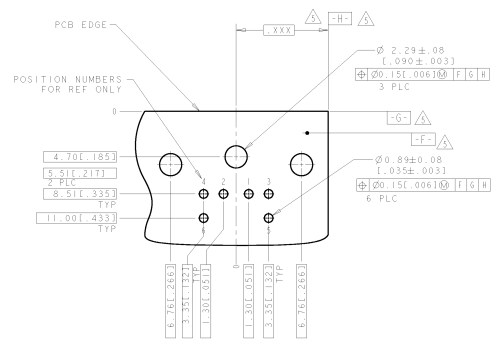
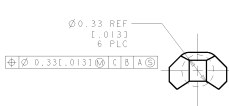
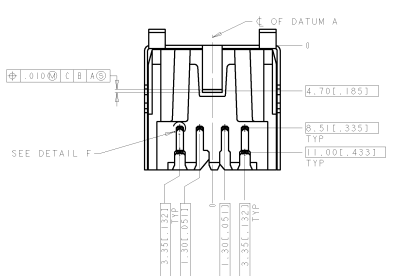


8	7	6	5	4	3	2	1
MATERIAL SPECIFICATIONS		REVISIONS					
BY: []		DATE: []					

REV	BY	DATE	DESCRIPTION	CHK	APP
01	[]	[]	[]	[]	[]



- ▲ SHIELD & CONTACTS: COPPER ALLOY.
HOUSING: POLYESTER, UL 94V-0 RATED, BLACK.
- ▲ 0.76 μm (.000030) MIN GOLD FOR A LENGTH OF 1.27 (.050) MIN FROM MATING END, 3.05 μm (.000120) MIN MATTE-TIN ON OPPOSITE END, BOTH OVER 1.27 μm (.000050) MIN NICKEL.
- ▲ 1.50-4.00 μm (.000059-.000158) THICK BRIGHT TIN.
- ▲ GOLD PLATING PER MIL-G-45204, TIN PLATING PER MIL-T-10727, NICKEL PLATING PER QQ-N-290.
- ▲ DATUMS AND BASIC DIMENSION SUPPLIED BY CUSTOMER.



RECOMMENDED PC BOARD LAYOUT
BOTTOM VIEW

DETAIL F
SCALE 50:1

P/N: 5750071-1 AS SHOWN

MIL-C-19398 TYPE III CONTACTS		MIL-C-19398 TYPE III CONTACTS		MIL-C-19398 TYPE III CONTACTS	
REVISIONS		REVISIONS		REVISIONS	
REV	BY	DATE	DESCRIPTION	CHK	APP
01	[]	[]	[]	[]	[]
PARTS LIST			PARTS LIST		
CUSTOMER DRAWING			CUSTOMER DRAWING		
CUSTOMER DRAWING			CUSTOMER DRAWING		