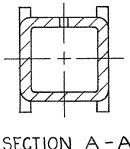
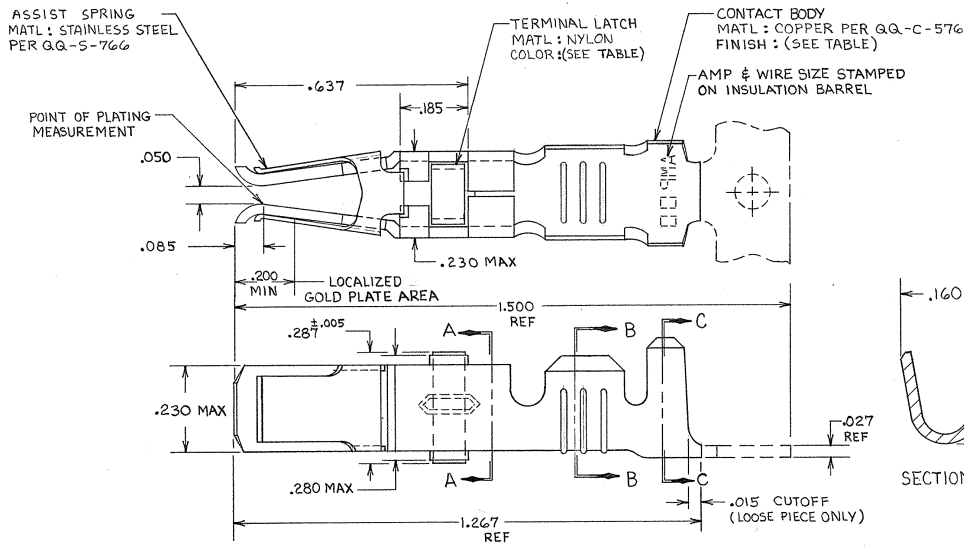


DRAWING MADE IN THIRD ANGLE PROJECTION

THIS DRAWING IS UNPUBLISHED. RELEASED FOR PUBLICATION 19
 © COPYRIGHT 19 BY AMP INCORPORATED, HARRISBURG, PA. ALL INTERNATIONAL RIGHTS RESERVED. AMP PRODUCTS MAY BE COVERED BY U.S. AND FOREIGN PATENTS AND/OR PATENTS PENDING.

REVOLUTIONS		DATE	APPROVED
✓	D	9-25-85	PER GIB
✓	E	3-4-81	506 GIB
✓	F	5-03	DAE



- 1. REELED FOR USE WITH STANDARD APPLICATORS.
- 2. REELED FOR USE WITH HEAVY DUTY MINI-APPLICATORS.
- 3. PLATED WITH .000100 MIN SILVER PER QQ-S-365.
- 4. PLATED WITH .000015 MIN GOLD PER MIL-G-45204 IN THE LOCALIZED GOLD PLATE AREA, GOLD FLASH ON THE REMAINDER, OVER .000030 MIN NICKEL PER QQ-N-290.
- 5. PLATED WITH .000030 MIN GOLD PER MIL-G-45204 IN THE LOCALIZED GOLD PLATE AREA, GOLD FLASH ON THE REMAINDER, OVER .000030 MIN NICKEL PER QQ-N-290.
- 6. PLATED WITH .000050 MIN 93-7% TIN-LEAD ALLOY OVER .000030 MIN NICKEL PER QQ-N-290.
- 7. WIRE RANGE = 12-16 AWG.
- 8. INSULATION RANGE = .140-.165 DIA.

9. PLATED TIN (NO LEAD) .000050 MIN THK PER ASTM-B-595 OVER NICKEL .000030 MIN THK PER QQ-N-290.

TERMINAL LATCH COLOR	FINISH	LOOSE PIECE PART NO.	STRIP PART NO.
BLACK	A	2-66740-1	2-66740-0
BLACK	A	2-66740-1	1-66740-9
BLACK	A	66740-8	1-66740-2
BLACK	A	66740-6	1-66740-1
BLACK	A	66740-0	1-66740-0
NATURAL	A	66740-2	66740-9
BLACK	A	66740-8	66740-7
BLACK	A	66740-6	66740-5
BLACK	A	66740-0	66740-3
NATURAL	A	66740-2	66740-1

UNLESS OTHERWISE SPECIFIED DIMENSIONS ARE IN INCHES. TOLERANCES ON: DECIMALS ±.010 ANGLES		CONTRACT NO.		AMP INCORPORATED Harrisburg, Pa. 17105	
MATERIAL		DR <i>R. Balach</i> 9-25-85		NAME	
SEE CALLOUT		CHK <i>R. Balach</i> 10-15-85		FEMALE TYPE XII CONTACT ASSEMBLY, WITH ASSIST SPRING	
FINISH		APPD <i>R. Balach</i> 10-15-85		SIZE	
SEE DASH NO		APPD <i>Miss Smith</i> 10-15-85		C 00779	
		OTHER APPD		DRAWING NO	
				66740	
				SCALE NTS	
				SHEET	

CUSTOMER DRAWING

AMP 1471-6 REV 2-81