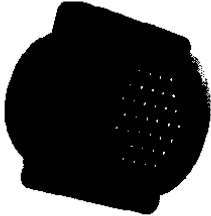


## Sealed Circular Plastic Connectors, Special Series 1

### Sealed CPC Receptacles, Special Series I with Pre-Installed, Bonded Peripheral Seal



Listed part numbers are for connectors only, contacts must be ordered separately.

#### Material and Finish:

**Housing**—Thermoplastic, UL 94V-0 rated, black

**Seal**—Elastomer, gray

#### Related Product Data:

**Contacts**—Page 44

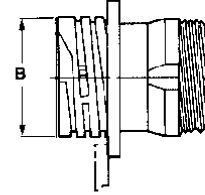
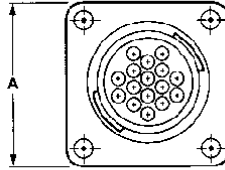
**Contact Arrangement**—Page 45

**Accessories**—Pages 38-50

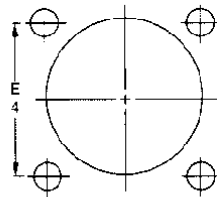
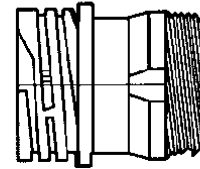
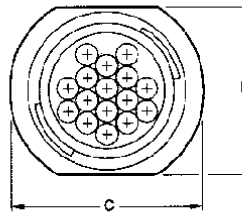
**Performance Characteristics**—Page 44

**Application Tooling**—Pages 69-75

### Square Flange Receptacle (Uses Flange Seal Part No. 81665-2)



### Free-Hanging Receptacle



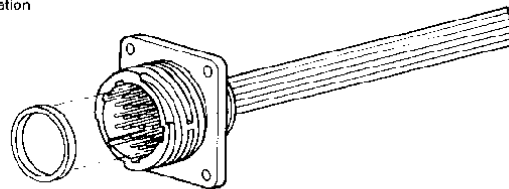
Recommended Panel Cutout

Shell Size	Dimension E
11	21.44 .844
13	24.51 .969
17	28.58 1.125
23	36.53 1.438

Shell Size	Dimensions		Contact Arrangement	Sex	Square Flange Part No.	Dimensions		Free-Hanging Part No.	Mates with Plug Part No.
	A	B				C	D		
11	28.58	15.42	11-4	Std.	206061-2	23.75	20.75	206153-2	206060-1
	1.125	.607				.935	.817		
13	32.54	20.62	13-9	Std.	206705-3	27.23	22.20	206705-4	206708-1
	1.281	.812				1.072	.874		
17	36.45	26.67	17-16	Std.	206036-4	33.27	29.49	206036-5	206037-1
	1.435	1.050	17-11	Rev.	206043-4	1.310	1.161	206043-5	206044-1
23	44.45	36.53	23-24	Std.	206838-3	44.02	38.23	206838-4	206837-1
	1.750	1.438	23-37	Std.	206151-3	1.733	1.505	206151-4	206150-1
				Rev.	206306-3			206306-4	206305-1

**Notes:** 1. For detailed performance data on peripheral seals, refer to AMP Product Specification No. 108-10024.  
2. Receptacle mates with Series 1 plugs found on page 10.

Seal shown outside of connector for illustration purposes only.



Receptacles with pre-installed, bonded peripheral seals are recommended for use in sealing/splash-proof applications, or where connectors will be subjected to vibration.