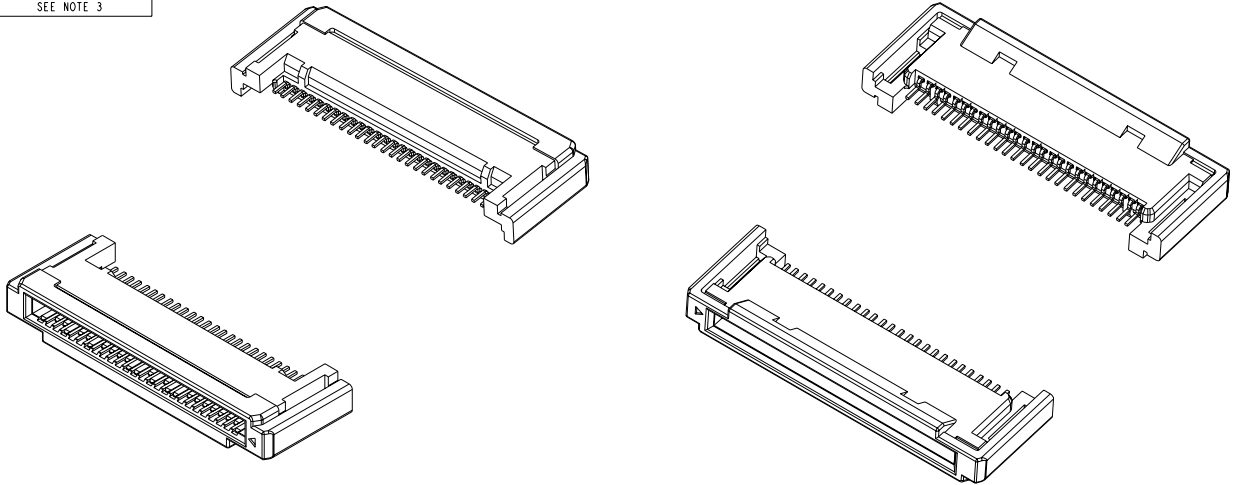
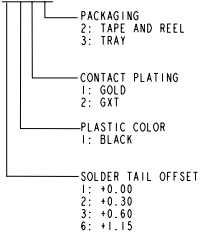


PRODUCT NUMBER	REMARK
10030570-1XXXLF	SEE NOTE 3
10030570-2XXXLF	SEE NOTE 3
10030570-3XXXLF	SEE NOTE 3
10030570-6XXXLF	SEE NOTE 3



- NOTES:
- MATERIAL: HIGH TEMPERATURE THERMOPLASTIC, UL 94V-0 FLAME RETARDANT.  
TERMINAL: COPPER ALLOY.  
PLATING SPEC. AS BELOW:  
Ni 50u" UNDER PLATED,  
Au 30u" OVER CONTACT AREA (ONE SIDE)  
Matte Tin 120u" OVER SOLDERING AREA.
  - PRODUCT PERFORMANCE PER SPEC. GS-12-292, "LF" MEANS LEAD FREE.
  - PART NUMBER SCHEME:  
10030570- X X X X LF



4. THIS PRODUCT IS ROHS COMPLIANT, AND MEETS EUROPEAN UNION DIRECTIVES AND OTHER COUNTRY REGULATIONS AS PER GS-22-008.



Copyright FCI.

rev	ecn no	dr	date
H	T07-0062	H.B	2007/03/08
J	N07-0164	MIAO	2007/07/16
K	N07-0181	MIAO	2007/08/08
L	N08-0025	R.B	2008/01/29
M	N10-0341	SH	10/08/2010
-	-	-	-
-	-	-	-

www.fciconnect.com		surface	tolerance std	projection	MM
Dr Rick Bian 2007/08/23		ANGULAR	0.X ±0.50	size A4	Scale 2.000
Eng Rick Bian 2007/08/23		LINEAR	0.XX ±0.30	ECN	
Chr Daniel Tao 2007/08/23		0° ±3°	0.XXX ±	Spec ref	
Appr JOSEPH HSIA 2007/08/23		Product family			
FCI		EXPRESSCARD MODULE CONNECTOR		cat no 10030570	Rev. M
		EXPRESSCARD MODULE CARD KIT		CUSTOMER	sheet 1 of 4
catalog no		10030570			

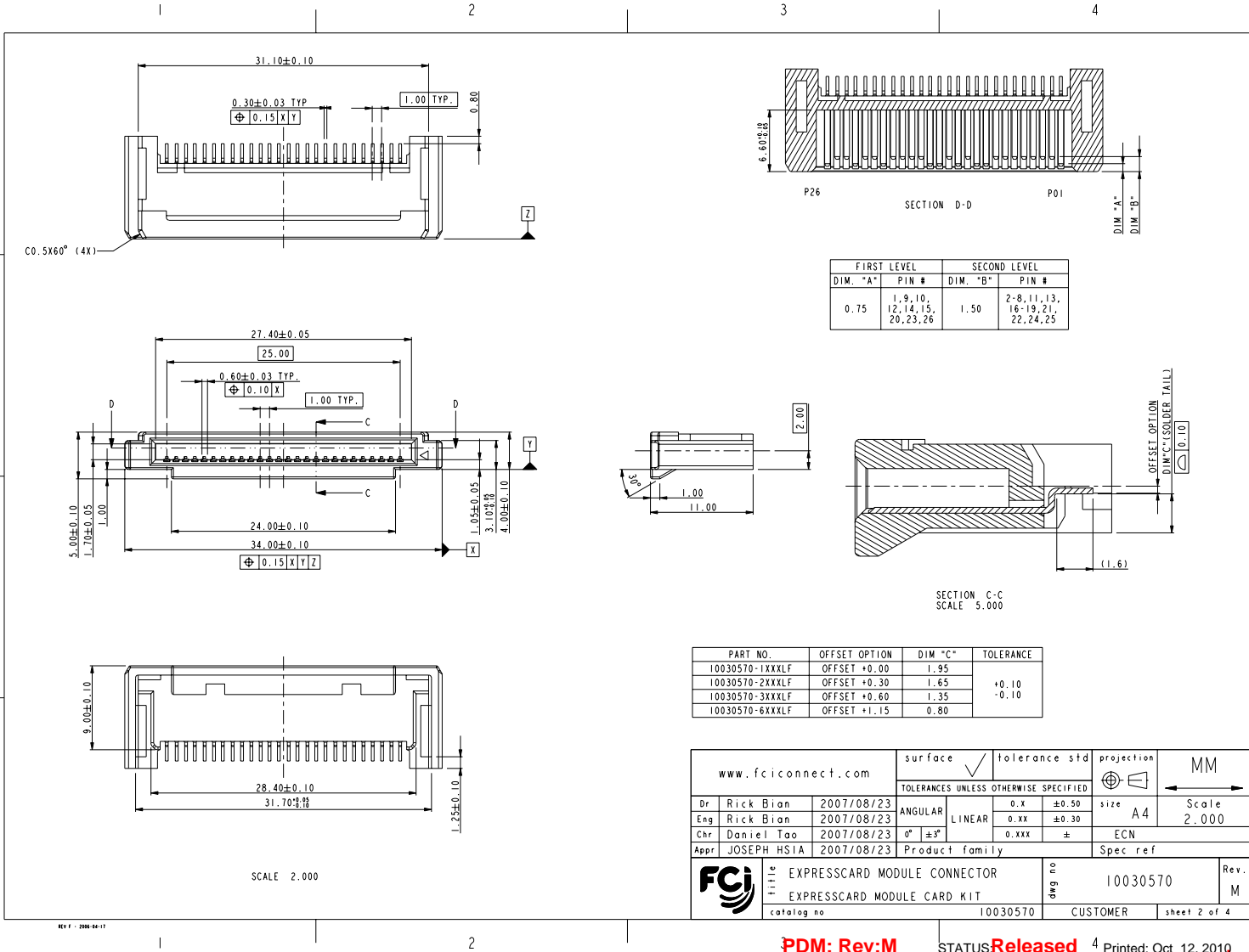
PDM: Rev:M

STATUS Released

4 Printed: Oct 12, 2010



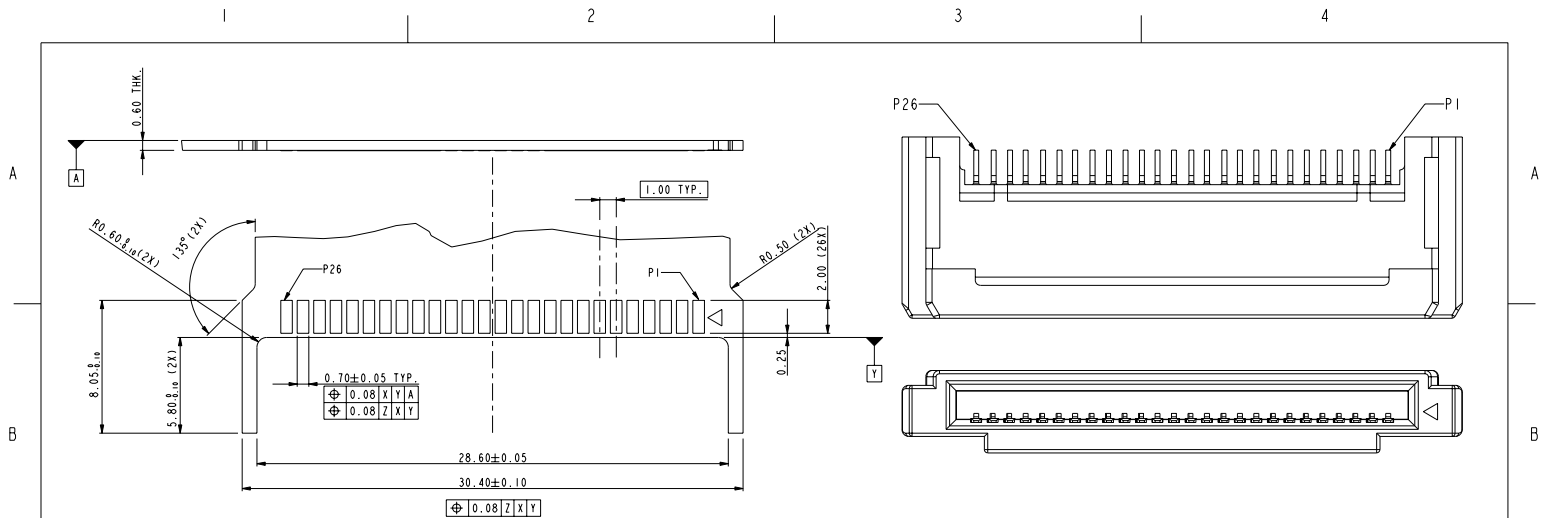
Copyright FCI.



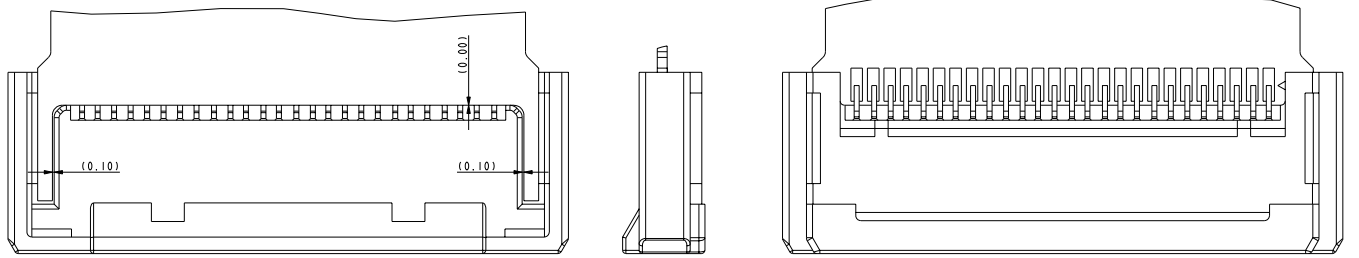
FIRST LEVEL		SECOND LEVEL	
DIM. "A"	PIN #	DIM. "B"	PIN #
0.75	1, 9, 10, 12, 14, 15, 20, 23, 26	1.50	2-8, 11, 13, 16-19, 21, 22, 24, 25

PART NO.	OFFSET OPTION	DIM "C"	TOLERANCE
10030570-1XXXLF	OFFSET +0.00	1.95	
10030570-2XXXLF	OFFSET +0.30	1.65	+0.10
10030570-3XXXLF	OFFSET +0.60	1.35	-0.10
10030570-6XXXLF	OFFSET +1.15	0.80	

www.fciconnect.com		surface <input checked="" type="checkbox"/>	tolerance std	projection	MM
TOLERANCES UNLESS OTHERWISE SPECIFIED					
Dr Rick Bian	2007/08/23	ANGULAR	0.x ±0.50	size A4	Scale 2.000
Eng Rick Bian	2007/08/23	LINEAR	0.xx ±0.30	ECN	
Chr Daniel Tao	2007/08/23	0° ±3°	0.xxx ±	Spec ref	
Appr JOSEPH HSIA	2007/08/23	Product family			
<b>FCI</b>	Title EXPRESSCARD MODULE CONNECTOR		dwg no	10030570	Rev. M
	EXPRESSCARD MODULE CARD KIT		catalog no	10030570	CUSTOMER
			sheet 2 of 4		



RECOMMENDED PCB LAYOUT



PCB ASSEMBLY REFERENCE

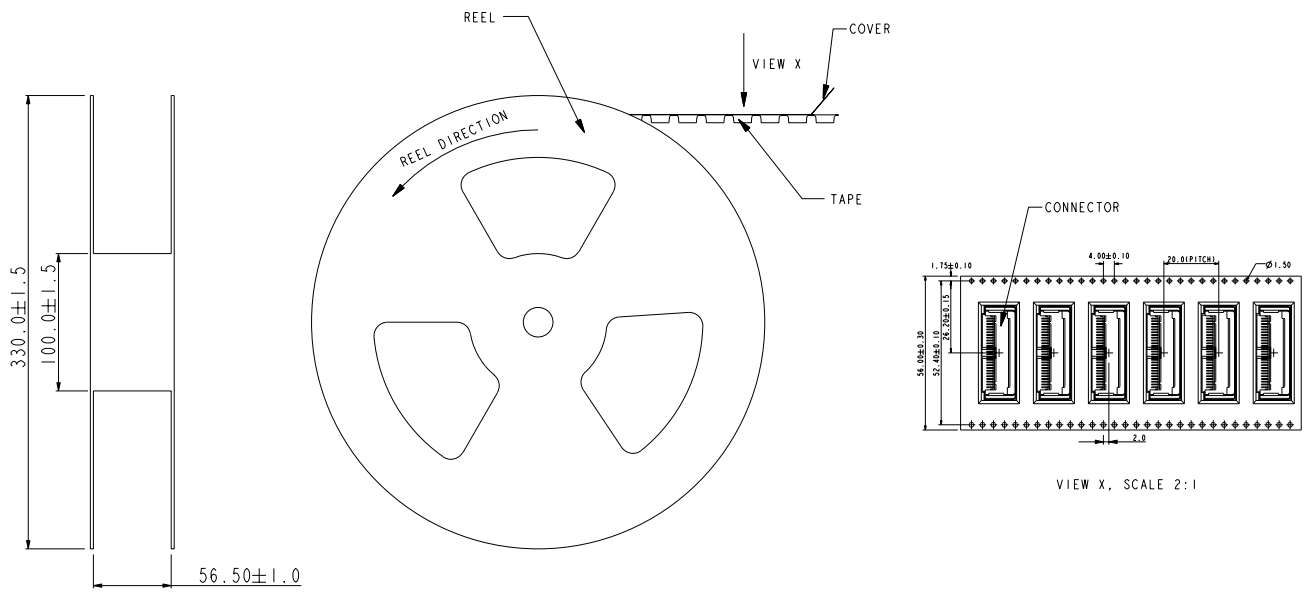
www.fciconnect.com		surface <input checked="" type="checkbox"/>	tolerance std	projection	MM
TOLERANCES UNLESS OTHERWISE SPECIFIED					
Dr Rick Bian	2007/08/23	ANGULAR	0.x ±0.50	size A4	Scale 1.000
Eng Rick Bian	2007/08/23	LINEAR	0.xx ±0.30		
Chr Daniel Tao	2007/08/23	0° ±3°	0.xxx ±	ECN	
Appr JOSEPH HSIA	2007/08/23	Product family		Spec ref	
<b>FCJ</b>	TITLE EXPRESSCARD MODULE CONNECTOR	eng no	10030570	Rev.	M
	TITLE EXPRESSCARD MODULE CARD KIT	catalog no	10030570	CUSTOMER	sheet 3 of 4

PDM: Rev:M STATUS Released 4 Printed: Oct 12, 2010

FCJ  
Copyright FCI.



Copyright FCI.



VIEW X, SCALE 2:1

www.fciconnect.com		surface <input checked="" type="checkbox"/>	tolerance std	projection	MM
		TOLERANCES UNLESS OTHERWISE SPECIFIED			←→
Dr Rick Bian	2007/08/23	ANGULAR	0.x ±0.50	size A4	Scale 1.000
Eng Rick Bian	2007/08/23	LINEAR	0.xx ±0.30		
Chr Daniel Tao	2007/08/23	0° ±3°	0.xxx ±	ECN	
Appr JOSEPH HSIA	2007/08/23	Product family		Spec ref	
	TITLE	EXPRESSCARD MODULE CONNECTOR		eng no	10030570
		EXPRESSCARD MODULE CARD KIT			Rev. M
	catalog no	10030570	CUSTOMER	sheet 4 of 4	

REV 1 - 2004-04-07