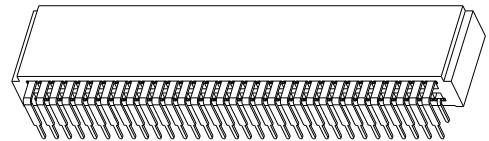
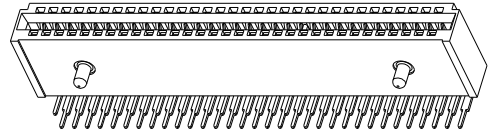




PRODUCT NO.	POSITION	REMARK	DIM "C"	DIM "D"	DIM "E"
10053363-100LF	2X32	WITH KEY	54.61	54.46	3.50±0.25
10053363-200LF	2X32	WITHOUT KEY	N/A	N/A	3.50±0.25
10053363-201LF	2X32	WITHOUT KEY	N/A	N/A	2.60± ^{0.10} _{0.30}

NOTES:

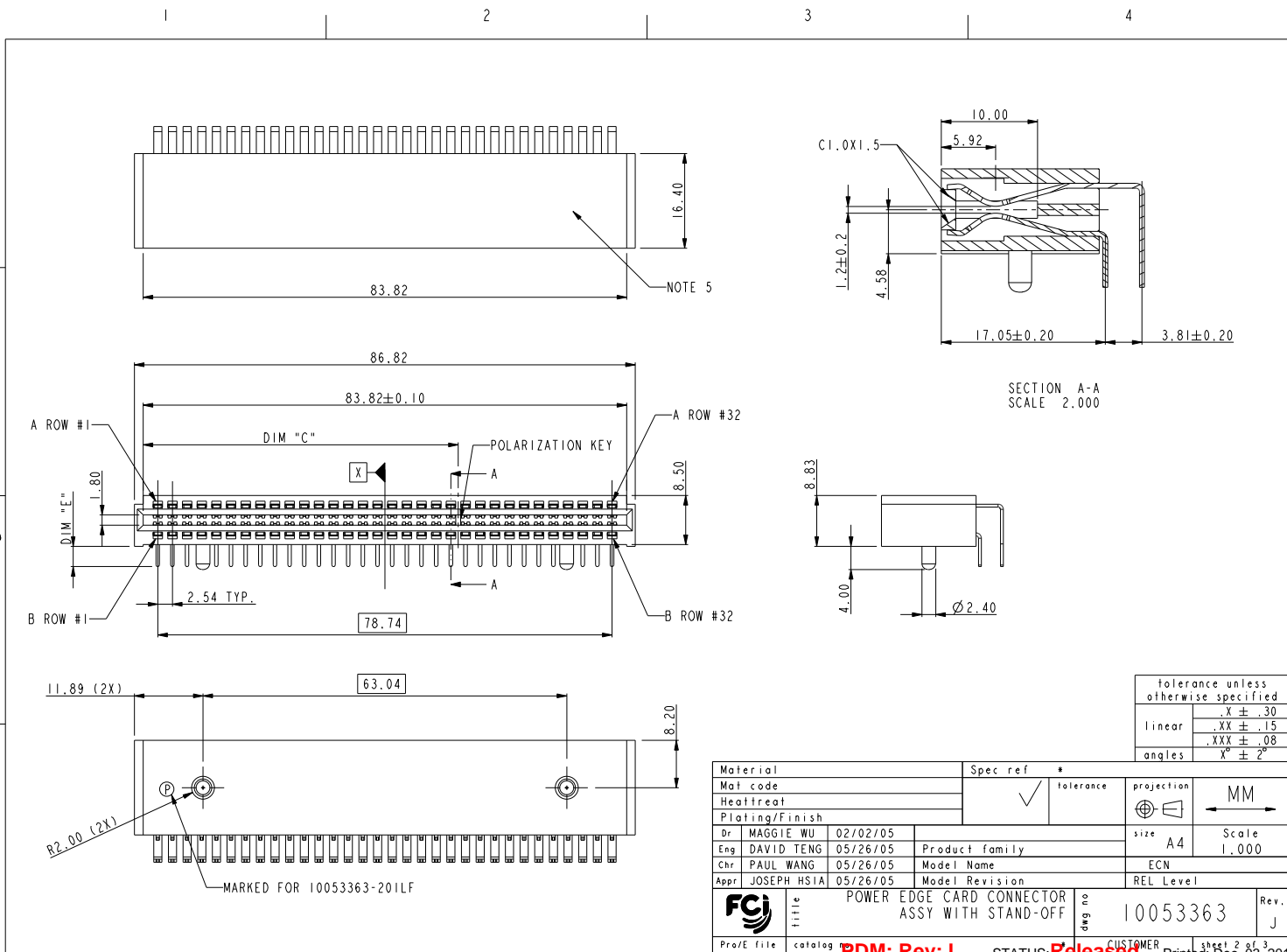
- MATERIALS:
HOUSING: HIGH TEMPERATURE THERMOPLASTIC, UL 94V-0 RATED, BLACK.
TERMINAL: HIGH CONDUCTIVITY COPPER ALLOY.
CONTACT AREA: 30u" GOLD OVER 50u" NICKEL UNDERPLATED.
SOLDER TAIL: 100u" TIN OVER 50u" NICKEL UNDERPLATED.
- PRODUCT PERFORMANCE SPEC. PER GS-12-259.
- PACKAGE SPECIFICATION PER GS-14-937.
- PART NUMBER 10053363-X00LF MEETS EUROPEAN UNION DIRECTIVE AND OTHER COUNTRY REGULATIONS AS DESCRIBED IN GS-22-008. THE HOUSING WILL WITHSTAND EXPOSURE TO 260°C±5°C PEAK TEMPERATURE FOR 5 SECONDS IN A REFLOW SOLDER APPLICATION WITH A CIRCUIT BOARD.
- MANUFACTURER'S NAME, P/N AND DATE CODE TO APPEAR ON THIS SURFACE AS PER GS-24-007.



tolerance unless otherwise specified	
linear	.X ± .30 .XX ± .15 .XXX ± .08
angles	X° ± 2°

Mark with REV. in area indicated by X.....	Material	Spec ref	tolerance	projection	MM
	Mat code	Heat treat	Plating/Finish	size A4	Scale 1.000
Dr MAGGIE WU 02/02/05	Eng DAVID TENG 05/26/05	Product family	Appr JOSEPH HSIA 05/26/05	Model Revision	REL Level
rev ecn no dr date	Chr PAUL WANG 05/26/05	Model Name	ECN		
W 0610-0098 Jun 03/08/10	J 0610-0206 Jun 06/03/10	C 105-0162 D T 08/10/05	D 0605-0287 SW 08/18/05	E 0605-0521 SW 12/02/05	F 0606-0321 RYAN 08/07/06
G 0606-0524 JULIA 12/26/06	title POWER EDGE CARD CONNECTOR ASSY WITH STAND-OFF P/N 10053363 Rev. J		Prof/E title	catalog	PDM: Rev:J STATUS: Released

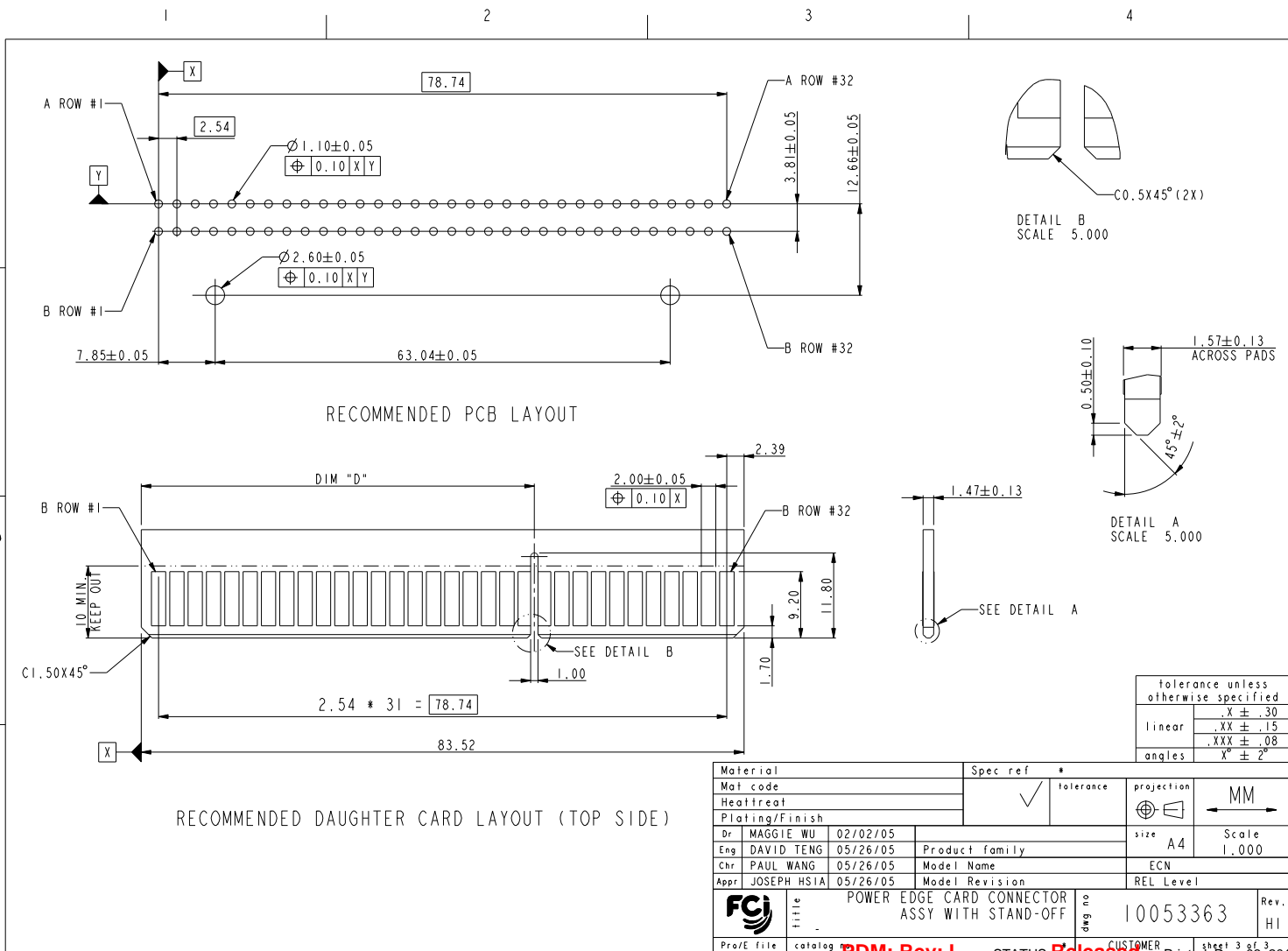
REV. F. 2006-04-11



tolerance unless otherwise specified	
linear	.X ± .30
	.XX ± .15
	.XXX ± .08
angles	X° ± 2°

Material		Spec ref *		tolerance		projection		MM	
Mat code		✓				⊕		← →	
Heat treat						A4		Scale 1.000	
Plating/Finish						ECN		REL Level	
Dr	MAGGIE WU	02/02/05	Product family						
Eng	DAVID TENG	05/26/05	Model Name						
Chr	PAUL WANG	05/26/05	Model Revision						
Appr	JOSEPH HSIA	05/26/05	Model Revision						
FCI		title		POWER EDGE CARD CONNECTOR ASSY WITH STAND-OFF		dwg no		10053363	
Prof/E title		catalog		PDM: Rev:J		STATUS: Released		Printed: Dec 03, 2010	

REV C 2006-04-11



tolerance unless otherwise specified	
linear	.X \pm .30 .XX \pm .15 .XXX \pm .08
angles	X° \pm 2°

Material	Spec ref *	tolerance	projection	MM
Mat code		✓	⊕	
Heat treat				
Plating/Finish				
Dr MAGGIE WU 02/02/05	Product family	size A4	Scale 1.000	
Eng DAVID TENG 05/26/05	Model Name	ECN		
Chr PAUL WANG 05/26/05	Model Revision	REL Level		
Appr JOSEPH HSIA 05/26/05				
FCI	title	10053363	Rev. HI	
Pro/E file	catalog	PDM: Rev:J	STATUS: Released	Printed: Dec 03, 2010