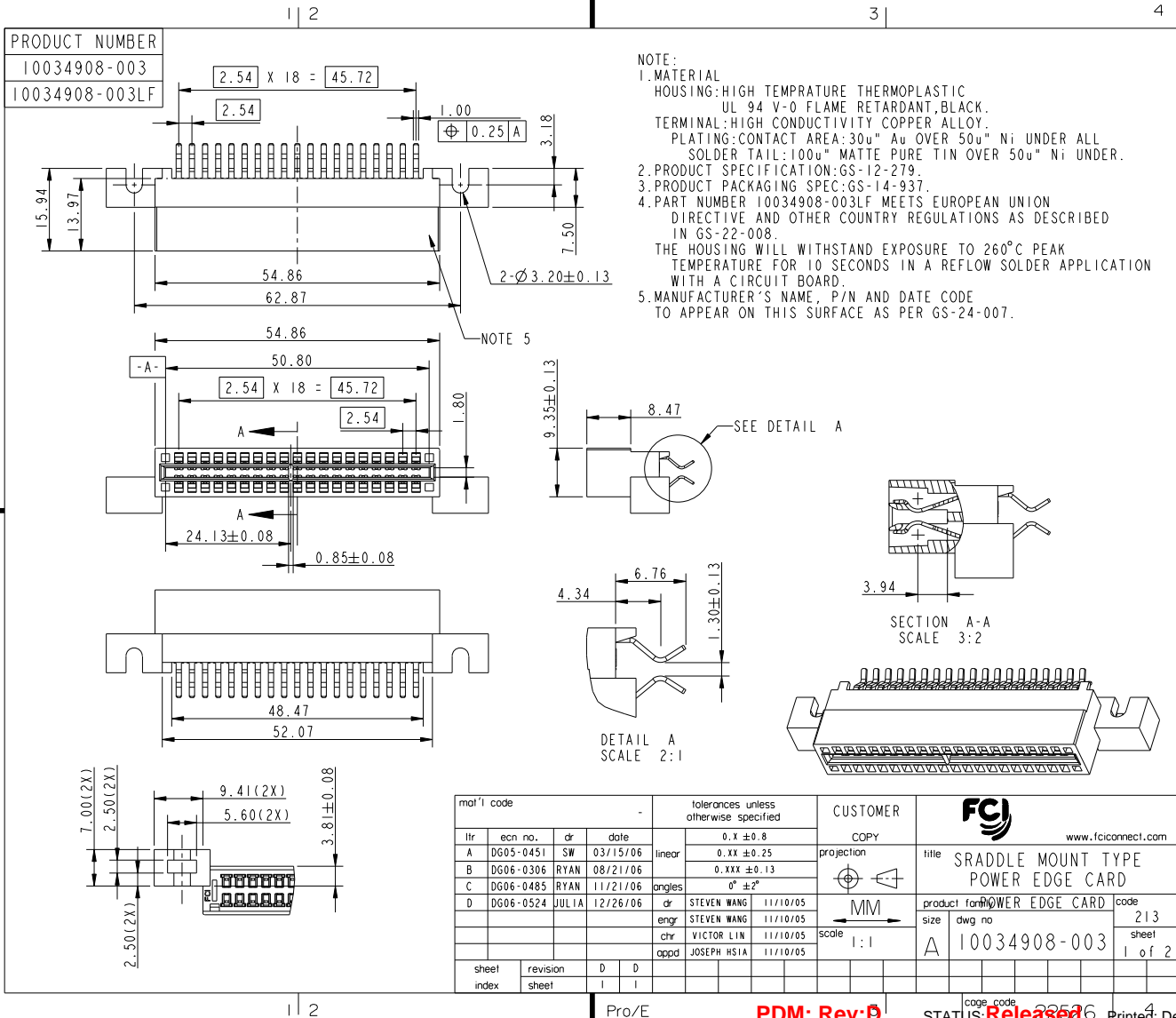


Tous droits strictement réservés. Reproduction ou communication à des tiers interdite sous quelque forme que ce soit sans autorisation écrite du propriétaire. Propriété de FCI. Droits de reproduction FCI.



All rights strictly reserved. Reproduction or issue to third parties in any form whatever is not permitted without written authority from the proprietor. Property of FCI. Copyright FCI.



mat'l code		tolerances unless otherwise specified		CUSTOMER		FCI		
ltr	ecn no.	dr	date	0.X ± 0.8	COPY	www.fciconnect.com		
A	DG05-0451	SW	03/15/06	0.XX ± 0.25	projection	title SRADDLE MOUNT TYPE POWER EDGE CARD		
B	DG06-0306	RYAN	08/21/06	0.XXX ± 0.13		product form		
C	DG06-0485	RYAN	11/21/06	0° ± 2°		POWER EDGE CARD		
D	DG06-0524	JULIA	12/26/06	engr STEVEN WANG 11/10/05		code	213	
				chr STEVEN WANG 11/10/05		size	dwg no	10034908-003
				chr VICTOR LIN 11/10/05		scale	1:1	1 of 2
				appd JOSEPH HSIA 11/10/05		A		
sheet index	revision sheet	D	D					

Pro/E

PDM: Rev: D

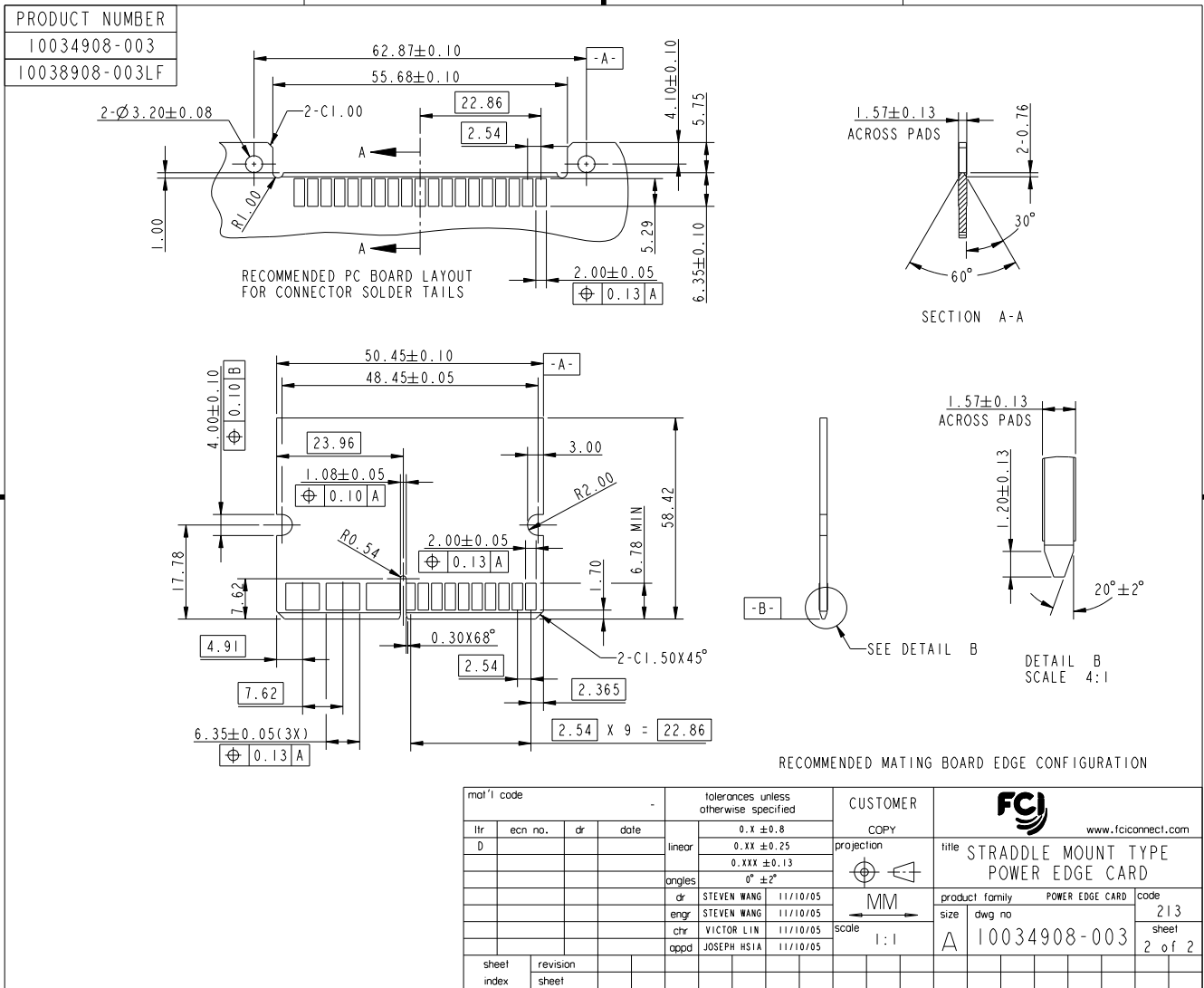
STATUS: Released

Printed: Dec 03, 2010

Tous droits strictement réservés. Reproduction ou communication à des tiers interdite sous quelque forme que ce soit sans autorisation écrite du propriétaire. Propriété de FCI. Droits de reproduction FCI.



All rights strictly reserved. Reproduction or issue to third parties in any form whatever is not permitted without written authority from the proprietor. Property of FCI. Copyright FCI.



mat'l code		tolerances unless otherwise specified		CUSTOMER		FCJ	
lfr	ecm no.	dr	date	0.X ±0.8	COPY	www.fciconnect.com	
D				0.XX ±0.25	projection	title STRADDLE MOUNT TYPE POWER EDGE CARD	
				0.XXX ±0.13	MM	product family	POWER EDGE CARD
				0° ±2°	scale	size	code
		eng	STEVEN WANG 11/10/05		1:1	dwg no	213
		chr	VICTOR LIN 11/10/05			10034908-003	sheet
		appd	JOSEPH HSIA 11/10/05				2 of 2
sheet index	revision sheet						

1 | 2

Pro/E

PDM: Rev: D

STATUS: Released

Printed: Dec 03, 2010