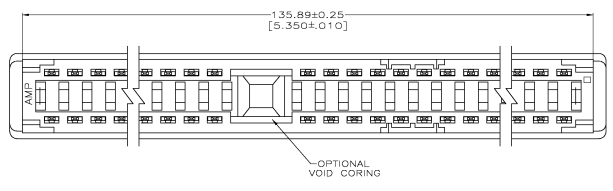
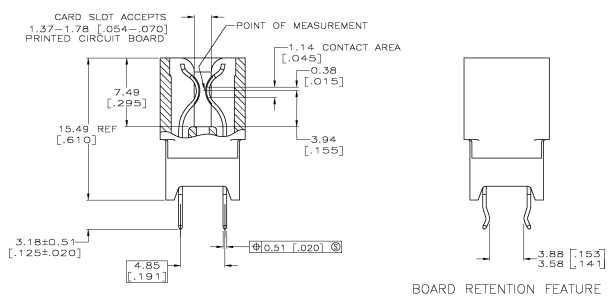
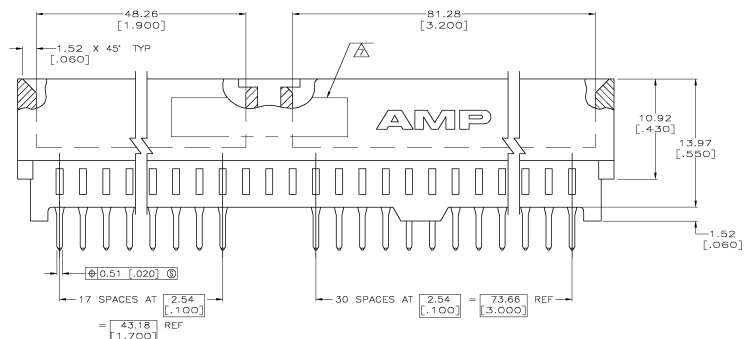
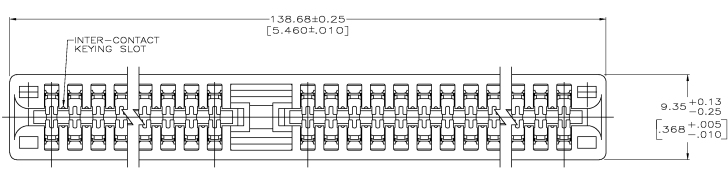


REV	DATE	DESCRIPTION	BY	CHK
GP 00				
A		RELEASED PER EC DS12-0473-04		

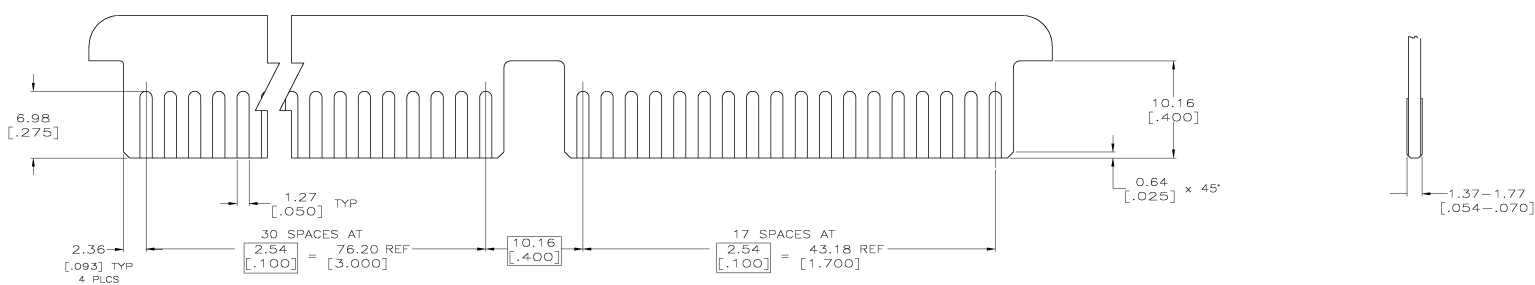
- △ HOUSING: GLASS FILLED POLYESTER; COLOR: BLACK.
- △ CONTACT: PHOSPHOR BRONZE.
- △ NICKEL PLATE: 0.00127 [0.00050] MIN - ALL OVER.
- △ MATTE TIN PLATE: 0.00254 [0.00100] MIN - SOLDER POSTS.
- △ GOLD PLATE: 0.00076 [0.00030] MIN - CONTACT AREA.
- △ NICKEL PLATE PER MIL-G-45204.
- △ GOLD PLATE PER QQ-N-290.
- △ AMP PART NUMBER, DATE CODE AND CSA LOGO ARE MARKED IN APPROXIMATE AREA SHOWN, EITHER SIDE.
- 8. RECOMMENDED PCB FINISHED HOLE DIA: 1.02±0.08 [0.40±0.03].
- 9. THE RETENTIVE FEATURE OF THIS CONNECTOR IS DESIGNED FOR FULL SEATING IN .062±0.008 THICK CIRCUIT BOARDS. FOR APPLICATIONS IN BOARDS OF OTHER THICKNESSES CONTACT AMP INCORPORATED.
- △ PACKAGED 20 CONNECTORS PER TUBE.
- △ PACKAGED 72 CONNECTORS PER EPS TRAY.
- △ GOLD PLATE: 0.00038 [0.00015] MIN - CONTACT AREA.
- △ PACKAGED IN SLIDE PACK.
- △ PACKAGE 57 CONNECTORS IN TUBES.
- △ DATUMS AND BASIC DIMENSIONS TO BE DETERMINED BY CUSTOMER.



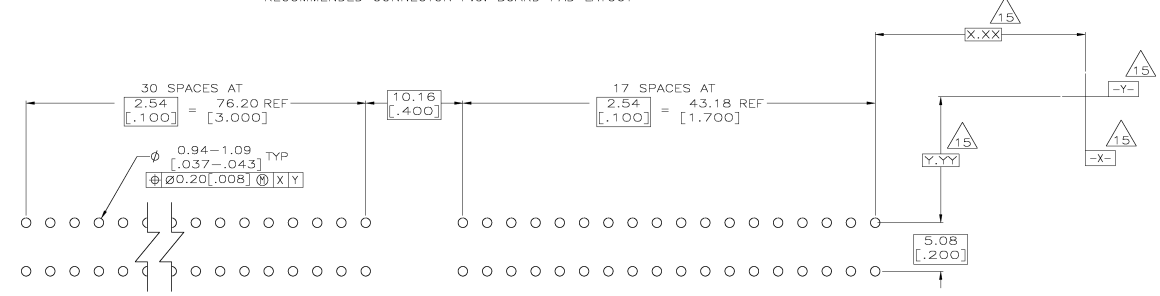
NOTE 5	NOTE 11	5,6,31,32,41,42,93,94	49	5645169-4
NOTE 5	NOTE 11	-	49	5645169-3
NOTE 5	NOTE 11	5,6,31,32,41,42,93,94	49	5645169-2
PLATING	PACKAGE	BOARD RETENTION LOCATION	NO. OF POSN	PART NUMBER
THIS DRAWING IS A CONTROLLED DOCUMENT. DATE 14 JAN 05 BY AWF/AMF				
DRAWN BY: [Signature]		Checked by: [Signature]		
DATE: 14 JAN 05		DATE: 14 JAN 05		
PROJECT: 108-9039		PROJECT: 108-9039		
REV: 2.54 [0.100]		REV: 2.54 [0.100]		
PART: [Signature]		PART: [Signature]		
DRAWING NO: A100779		DRAWING NO: A100779		
CUSTOMER DRAWING		CUSTOMER DRAWING		

THIS DRAWING IS UNCLASSIFIED
 UNLESS INDICATED OTHERWISE
 IN THIS ELECTRONICS CORPORATION ACT WORK DRAWING

REV	DATE	REVISIONS		
		BY	DESCRIPTION	APP
00				
		SEE SHEET 1		



RECOMMENDED CONNECTOR P.C. BOARD PAD LAYOUT



RECOMMENDED CONNECTOR P.C. BOARD HOLE PATTERN

THIS DRAWING IS A CONTROLLED DOCUMENT.		DATE: 14 JUN 83		Eyrone	
DRAWN BY: E.F. BRANTUM		DATE: 14 JUN 83		Title Electronics Corporation	
CHECKED BY: E.F. BRANTUM		DATE: 14 JUN 83		Harrisburg, Pa 17105-3608	
APPROVED BY: E.F. BRANTUM		DATE: 14 JUN 83		CONNECTIONS	
PART: 10B-9039		PROJECT SIZE: 2.54 [100]		CONNECTOR ASSEMBLY,	
MATERIAL: SEE SHEET 1		MATERIAL: SEE SHEET 1		STANDARD EDGE II,	
WEIGHT: A1 00779		DRAWING NO: 5645169		2.54 [100]	
CUSTOME DRAWING		DATE: 5-1		REV: 2	
				APP: A	