

- NOTES :
- MATERIAL :
 - HOUSING : THERMOPLASTIC, HIGH TEMP. W/ 30% G/F, UL 94 V-0, COLOR: BLACK
 - CONTACTS : PHOSPHOR BRONZE
 - PEG : BRASS
 - FINISH:
 - CONTACT:
 - 0.05μm[2μ"] MIN. GOLD PLATING ON CONTACT AREA.
 - 1.25μm[50μ"] MIN. NICKEL UNDERPLATING OVERALL.
 - PEG:
 - 2.5μm[100μ"] MIN. BRIGHT TIN PLATING ON SOLDER TAILS.
 - 1.25μm[50μ"] MIN. NICKEL UNDERPLATING OVERALL.
 - REFLOW SOLDER CAPABLE TO 260°C PER TYCO SPEC. 109-201, CONDITION B.

PRINT DEST DWI
 NOT A PART OF THE PRODUCT. THIS IS A REFERENCE DRAWING. DIMENSIONS IN MILLIMETERS. DO NOT SCALE PRINT.

NUMBER C-1775838
 3RD ANGLE PROJECTION
 METRIC

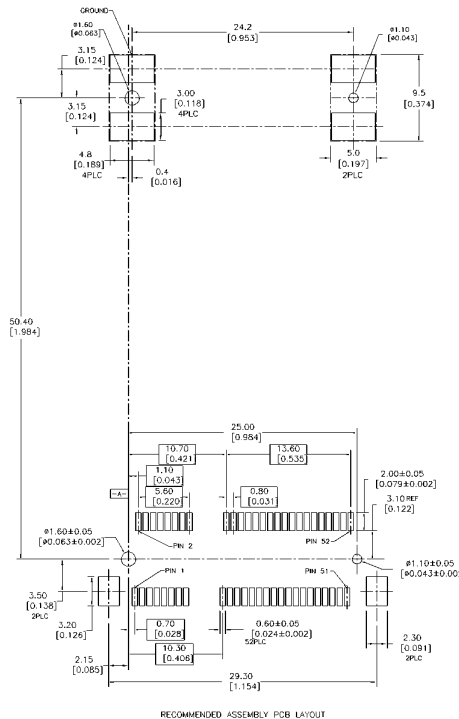
1775838-1
PART NUMBER

TOLERANCES UNLESS OTHERWISE SPECIFIED: 0 P/LC ± 1 P/LC ±0.3 2 P/LC ±0.2 5 P/LC ± ANGLES ± 3		DWN S. HOU 11-NOV-2005 CHK W.J. KE 11-NOV-2005 APVD W.J. KE 11-NOV-2005	tyco Electronics TYCO HOLDINGS (BERMUDA) VI. LTD. TAIWAN BRANCH
MATERIAL		PRODUCT SPEC	NAME
SEE NOTE		108-57804	MINI PCI EXPRESS HEADER
FINISH		QUALIFICATION TEST REPORT	5.6 HEIGHT, SMT
SEE NOTE		501-57810	
WEIGHT		LOC	SIZE
1.6 GRAM		DW	A ₃
		SCALE	DRAWING NO
		--	C-1775838
		SHEET	REV
		1 OF 6	O

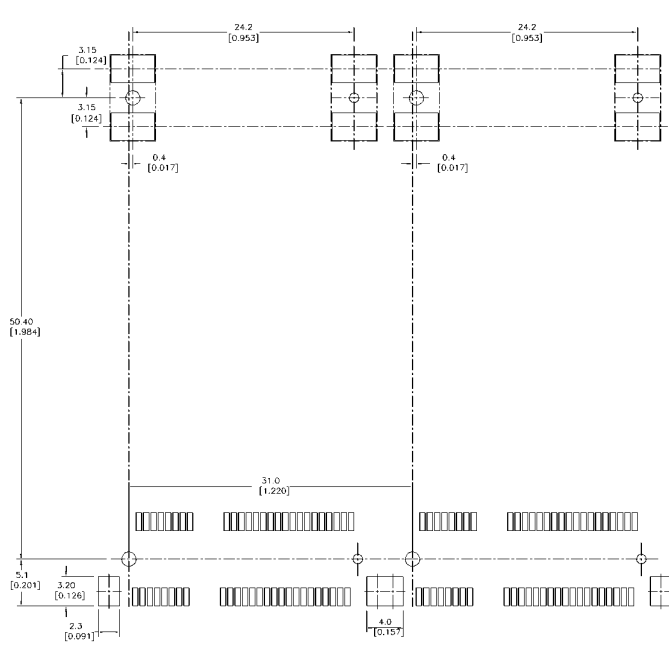
0	FIRST RELEASED	--	SH	11NOV 2005
LTR	REVISION RECORD	ECN	DRG	DATE

CUSTOMER DRAWING 1

THIS INFORMATION IS CONFIDENTIAL AND IS DISCLOSED TO YOU ON THE CONDITION THAT YOU WILL NOT REPRODUCE, COPY, TRANSMIT, OR IN ANY MANNER DISCLOSE TO OTHERS WITHOUT THE WRITTEN PERMISSION OF TYCO ELECTRONICS. DIMENSIONS IN MILLIMETERS. DO NOT SCALE PRINT.



RECOMMENDED ASSEMBLY PCB LAYOUT



RECOMMENDED ASSEMBLY PCB LAYOUT (SOCKET)

SEE SHEET 1	DATE
REVISION RECORD	CHK DATE
EON	DATE

TOLERANCES UNLESS OTHERWISE SPECIFIED: 0 PLC ± 1 PLC ±0.3 2 PLC ±0.2 3 PLC ± ANGLES ±3	DRN S. HOU 11-NOV-2005	 TYCO HOLDINGS (BERMUDA) VII LTD. TAIWAN BRANCH
	CHK W.J. KE 11-NOV-2005	
MATERIAL	APVD W.J. KE 11-NOV-2005	NAME MINI PCI EXPRESS HEADER 5.6 HEIGHT, SMT
FINISH	QUALIFICATION TEST REPORT	LOC DW A3
WEIGHT	SCALE	DRAWING NO. C-1775838 REV O
		SHEET 2 OF 6

CUSTOMER DRAWING

8

7

6

5

4

3

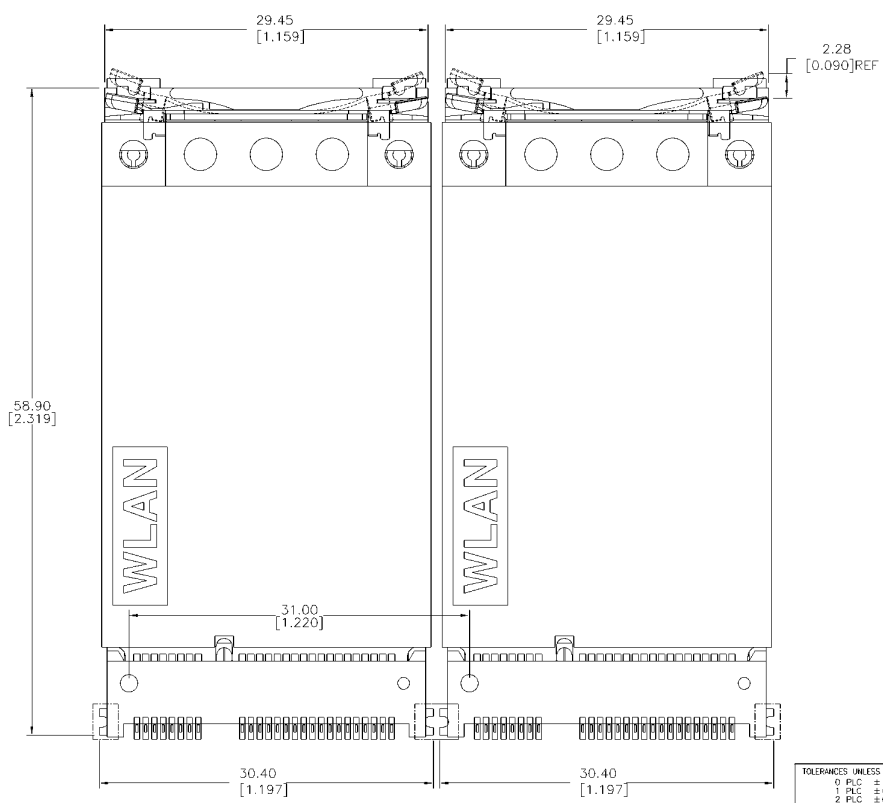
2

1

D
C
B
A

NUMBER C-1775838
 3RD ANGLE PROJECTION
 METRIC

THIS INFORMATION IS CONFIDENTIAL AND IS DISCLOSED TO YOU ON CONDITION THAT YOU WILL NOT REPRODUCE, COPY, TRANSMIT, OR IN ANY MANNER DISCLOSE TO OTHERS WITHOUT THE WRITTEN PERMISSION OF TYCO HOLDINGS (BERMUDA) LTD. DIMENSIONS IN MILLIMETERS. DO NOT SCALE PRINT.



D
C
B
A

TOLERANCES UNLESS OTHERWISE SPECIFIED: 0 P/LC ± 1 P/LC ±0.3 2 P/LC ±0.2 3 P/LC ± ANGLES ±3	DWN S. HOUI 11-NOV-2005 CHK W.J. KE 11-NOV-2005	tyco TYCO HOLDINGS (BERMUDA) Electronics VII LTD. TAIWAN BRANCH NAME MINI PCI EXPRESS HEADER 5.6 HEIGHT, SMT
MATERIAL	APVD W.J. KE 11-NOV-2005	
FINISH	QUALIFICATION TEST REPORT	LOC DW A3
WEIGHT	SCALE	DRAWING NO C-1775838 REV O SHEET 3 OF 6

SEE SHEET 1	EON	DWR	DATE
LTR	REVISION RECORD	CHK	

CUSTOMER DRAWING

NUMBER C-1775838

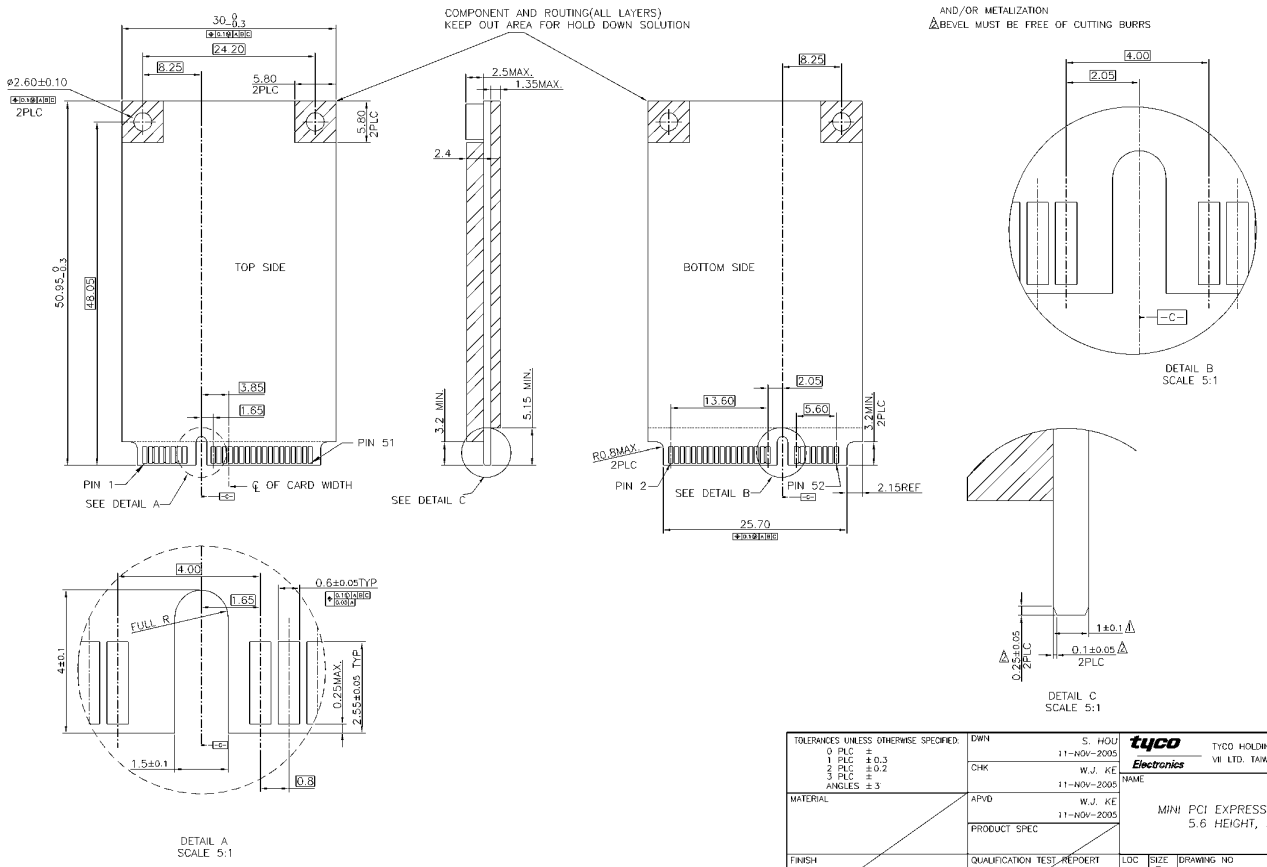
METRIC

THIS INFORMATION IS SPECIFIC AND IS REFERRED TO YOU ON CONDITION THAT YOU WILL NOT REPRODUCE THIS DRAWING OR ANY PART THEREOF WITHOUT THE WRITTEN PERMISSION OF TYCO ELECTRONICS LTD. DIMENSIONS IN MILLIMETERS. DO NOT SCALE PRINT.

PRINT DW

COMPONENT AND ROUTING(ALL LAYERS)
KEEP OUT AREA FOR HOLD DOWN SOLUTION

NOTE:
△CARD THICKNESS APPLIES ACROSS TABS AND INCLUDES PLATING AND/OR METALIZATION
△BEVEL MUST BE FREE OF CUTTING BURRS



SEE SHEET 1	EDN	DATE
LTR	REVISION RECORD	

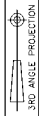
TOLERANCES UNLESS OTHERWISE SPECIFIED:	DWN	S. HOU	11-NOV-2005	tyco TYCO HOLDINGS (BERMUDA) Electronics VII LTD. TAIWAN BRANCH
0 PLC ±	CHK	W.J. KE	11-NOV-2005	
1 PLC ±0.3				NAME
2 PLC ±0.2				MATERIAL
3 PLC ±				PRODUCT SPEC
ANGLES ±3				FINISH
				WEIGHT
				QUALIFICATION TEST REPORT
				LOC
				SIZE
				DRAWING NO
				REV
				SCALE
				SHEET

CUSTOMER DRAWING

8 7 6 5 4 3 2 1

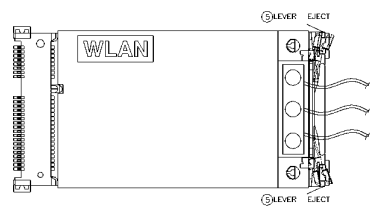
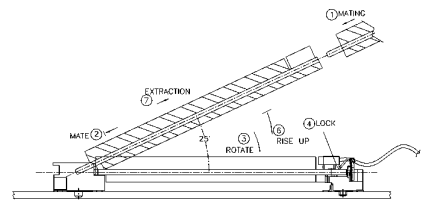
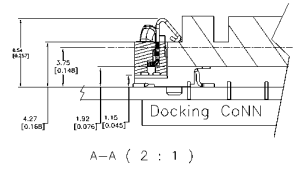
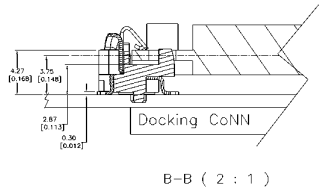
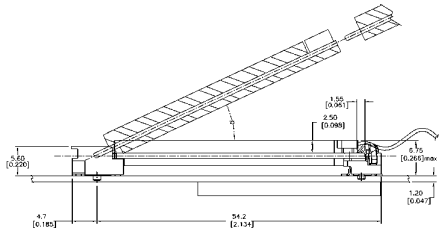
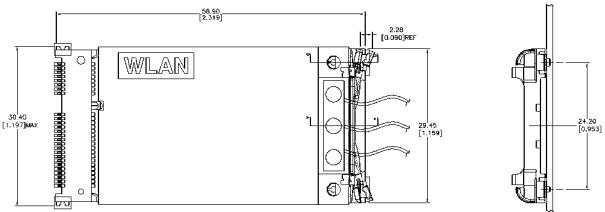
D
C
B
A

NUMBER C-1775838

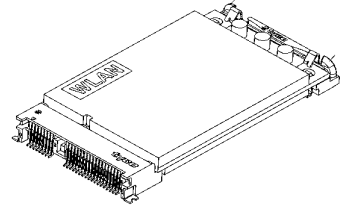


METRIC

THIS INFORMATION IS CONFIDENTIAL AND IS RELEASED TO YOU ON CONDITION THAT YOU WILL NOT DISSEMINATE IT TO ANY OTHER PARTY WITHOUT THE WRITTEN PERMISSION OF TYCO ELECTRONICS LTD. DIMENSIONS IN MILLIMETERS. DO NOT SCALE PRINT.



HOW TO MATE AND UNMATE
 MATE: ① → ②
 UNMATE: ③ → ④



TOLERANCES UNLESS OTHERWISE SPECIFIED: 0 PLG ± 1 PLG ±0.3 2 PLG ±0.2 3 PLG ± ANGLES ± 3	DWN S. HOU 11-NOV-2005	tyco Electronics TYCO HOLDINGS (BERMUDA) VII LTD. TAIWAN BRANCH
	CHK W.J. KE 11-NOV-2005	
MATERIAL	APVD W.J. KE 11-NOV-2005	NAME MINI PCI EXPRESS HEADER 5.6 HEIGHT, SMT
FINISH	QUALIFICATION TEST REPORT	LOC DW A3
WEIGHT	SCALE	SIZE DRAWING NO C-1775838 SHEET 5 OF 6

SEE SHEET 1	EDN	CHK	DATE
LTR	REVISION RECORD		

CUSTOMER DRAWING

8

7

6

5

4

3

1

2

1

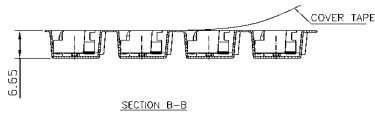
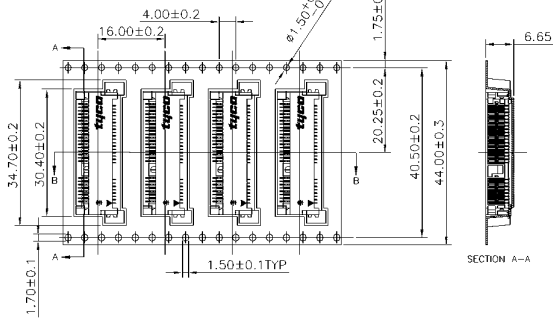
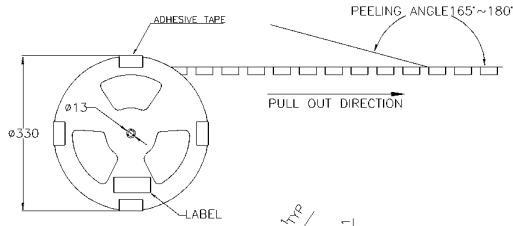
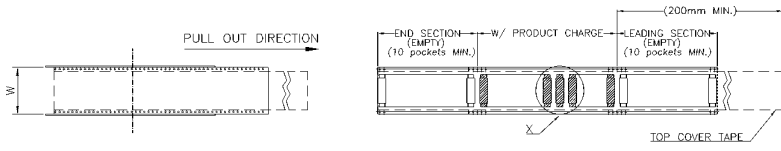
A

B

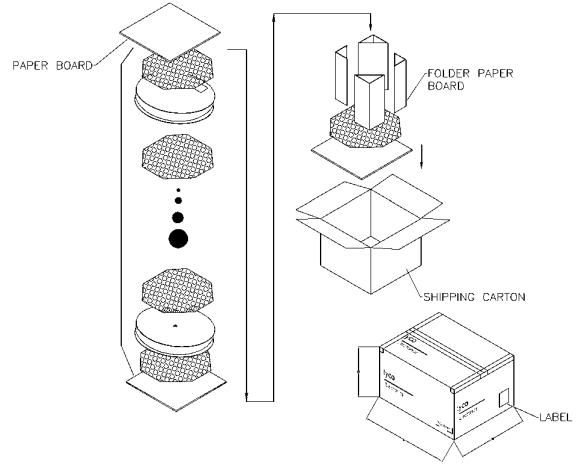
C

D

THIS INFORMATION IS SPECIFIC AND IS RELEASED TO YOU ON CONDITION THAT YOU WILL NOT REPRODUCE OR TRANSMIT THIS INFORMATION TO ANY OTHER PARTY WITHOUT THE WRITTEN PERMISSION OF TYCO ELECTRONICS. DIMENSIONS IN MILLIMETERS. DO NOT SCALE PRINT.



- NOTES:
- MATERIAL :
 - EMBOSSED CARRIER: PS
 - COVER TAPE: PS
 - SHIPPING CARTON: CORRUGATED FIBER
 - DIMENSION
 - REEL: W=44.4
 - SHIPPING CARTON: L=335, W=335, H=248
 - QUANTITY :
 - PRIMARY PACKING:500PCS/REEL;
 - SECONDARY PACKING:4REELS/CARTON(2000PCS/CARTON).
 - WEIGHT :
 - GROSS WEIGHT :1400g/REEL.6120g/CARTON.
 - NET WEIGHT:1.60g/PCS,800g/REEL,3200kg/CARTON.
 - PEELING RESISTANCE: 10.2gf~71.4gf.
 - PEELING SPEED: 300mm/minutes.



SEE SHEET 1	EDN	DATE
REVISION RECORD	CHK	DATE

TOLERANCES UNLESS OTHERWISE SPECIFIED:	DWN	S. HOU	TYCO	TYCO HOLDINGS (BERMUDA)
0 PLC ±	11-NOV-2005	11-NOV-2005	Electronics	VII LTD. TAIWAN BRANCH
1 PLC ±0.3	CHK	W.J. KE	NAME	
2 PLC ±0.2		11-NOV-2005		
3 PLC ±		11-NOV-2005		
ANGLES ±3				
MATERIAL	APVD	W.J. KE	MINI PCI EXPRESS HEADER	
		11-NOV-2005	5.6 HEIGHT, SMT	
FINISH	QUALIFICATION TEST REPORT	LOC	SIZE	DRAWING NO
		DW	A3	C-1775838
WEIGHT	SCALE			REV
				O
				6 OF 6

CUSTOMER DRAWING

8

7

6

5

4

3

1

2

1

D
C
B
A