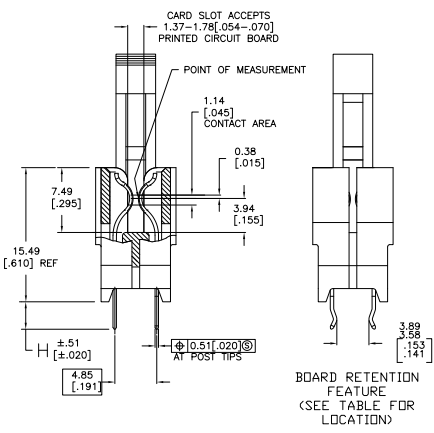
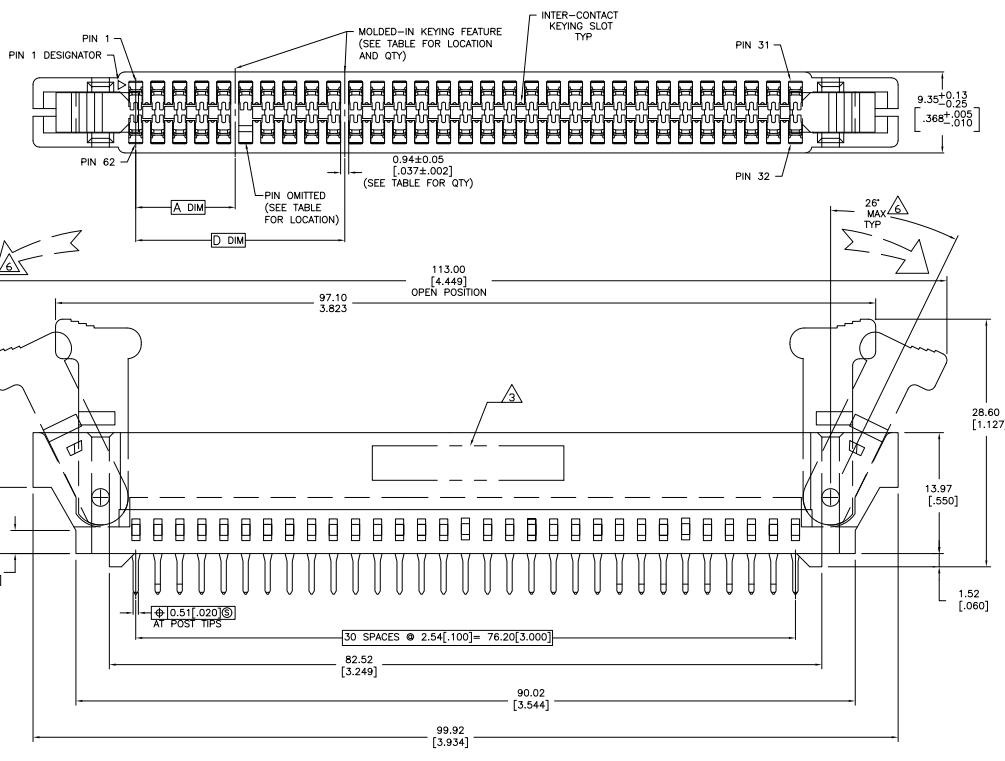


THIS DRAWING IS UNPUBLISHED
 UNLESS INDICATED OTHERWISE
 © 2005 BY THE ELECTRONIC CORPORATION. ALL RIGHTS RESERVED.

REV	DATE	DESCRIPTION	BY	APP'D
AA	00			
N		ECO-08-00050		

- MATERIAL:
 HOUSING: GLASS FILLED POLYESTER; COLOR: BLACK.
 CONTACT: HIGH CONDUCTIVITY COPPER ALLOY
 LATCH: GLASS FILLED POLYESTER, COLOR: (SEE TABLE)
- FINISH:
 0.00038[.000015] GOLD PLATE IN CONTACT AREA,
 0.00254[.000100] MIN TH-LEAD ON SOLDER POSTS, ALL
 OVER 0.00127[.000050] MIN NICKEL
- AMP LOGO, TE PART NUMBER, DATE CODE AND CSA LOGO INK
 STAMPED WHITE (NOT STAMPED OR LAZER PRINTED) IN THE APPROXIMATE
 AREA SHOWN, EITHER SIDE PERMISSABLE, WHEN HOUSING SIZE PERMITS
- DATUMS AND BASIC DIMENSIONS ESTABLISHED BY CUSTOMER
- CONNECTORS SHOWN ARE USED IN APPLICATIONS WITH VRM MODULES WEIGHING
 3 OUNCES OR LESS. ALTERNATE CONNECTOR AND LATCH METHOD IS AVAILABLE FOR
 VRM MODULES WEIGHING UP TO 6 OUNCES.
- CAUTION: LATCHES ARE INTENDED FOR RETENTION OF PC BOARD TO CONNECTOR.
 DO NOT ATTEMPT TO FULLY EJECT PC BOARD FROM CONNECTOR WHILE DISENGAGING
 LATCHES. DAMAGE TO LATCHES AND OR CONNECTOR MAY OCCUR



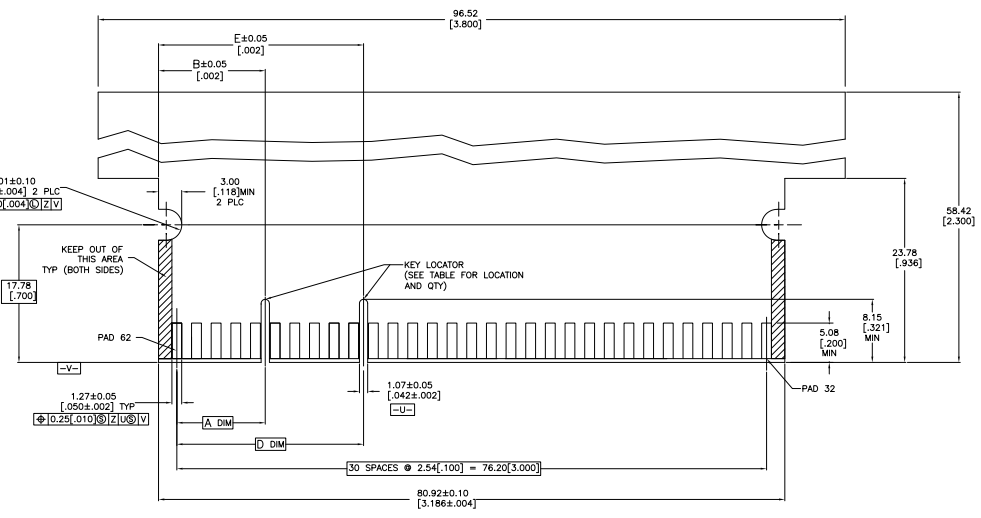
CONSULT 1489930-5
 PART NUMBER

LATCH COLOR	H	E	D	B	A	RETENTION LOCATION	KEYING FEATURE	MOLDED-IN KEYING FEATURE	VRM PIN	NO OF DUAL PINS	PART NUMBER
WHITE	4.75 (187)	-	-	-	-	2,3, 29,30, 33,34, 60,61	NNN	NNN	-	31	1489930-4
WHITE	3.18 (125)	-	-	-	-	2,3, 29,30, 33,34, 60,61	NNN	NNN	-	31	1489930-4
WHITE	3.18 (125)	23.95 (943)	21.52 (850)	8.71 (342)	6.35 (250)	2,3, 29,30, 33,34, 60,61, 3,4, 8, 9,10	37	-	30	1489930-3	
BLACK	3.18 (125)	26.49 (1043)	24.13 (950)	-	-	1,3, 29,30, 33,34, 60,61	1011	37	101	31	1489930-2
BLACK	3.18 (125)	26.49 (1043)	24.13 (950)	13.79 (543)	11.43 (450)	2,3, 29,30, 33,34, 60,61, 5,6, 6, 10,11	37	101	120	31	1489930-1

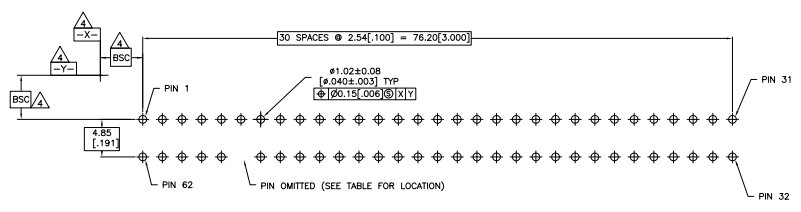
THIS DRAWING IS A CONTROLLED DOCUMENT. DATE: 11/14/2005. DRAWN BY: J. LAMAR. CHECKED BY: J. LAMAR. APPROVED BY: J. LAMAR. DATE: 11/14/2005. DRAWING NO: 114-13018. CUSTOMER DRAWING: 100779. PART NUMBER: 1489930. SIZE: 5.1. SHEET: 1 OF 2.

THIS DRAWING IS UNPUBLISHED
 ALL RIGHTS RESERVED

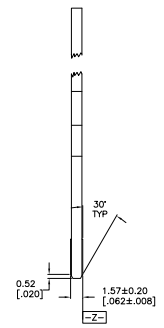
REV	DATE	DESCRIPTION	BY	APP
AA	00			



RECOMMENDED MATING BORAD EDGE CONFIGURATION



RECOMMENDED PC BOARD HOLE LAYOUT



THIS DRAWING IS A CONTROLLED DOCUMENT.		DATE: 11/11/2000		DRAWN BY: J. MAYER		CHECKED BY: J. MAYER		DATE: 11/11/2000		DRAWN BY: J. MAYER		CHECKED BY: J. MAYER	
UNLESS OTHERWISE SPECIFIED:		DIMENSIONS IN INCHES		TOLERANCES UNLESS OTHERWISE SPECIFIED:		FRACTIONS		DECIMALS		DIMENSIONS IN MILLIMETERS		TOLERANCES UNLESS OTHERWISE SPECIFIED:	
FRACTIONS		DECIMALS		DIMENSIONS IN MILLIMETERS		TOLERANCES UNLESS OTHERWISE SPECIFIED:		FRACTIONS		DECIMALS		DIMENSIONS IN MILLIMETERS	
SEE NOTE 1		SEE NOTE 2		SEE NOTE 3		SEE NOTE 4		SEE NOTE 5		SEE NOTE 6		SEE NOTE 7	
CUSTOMER DRAWING		DATE: 11/11/2000		DRAWING NO: A100779		REV: 1		PAGE: 1		OF: 2		REV: N	