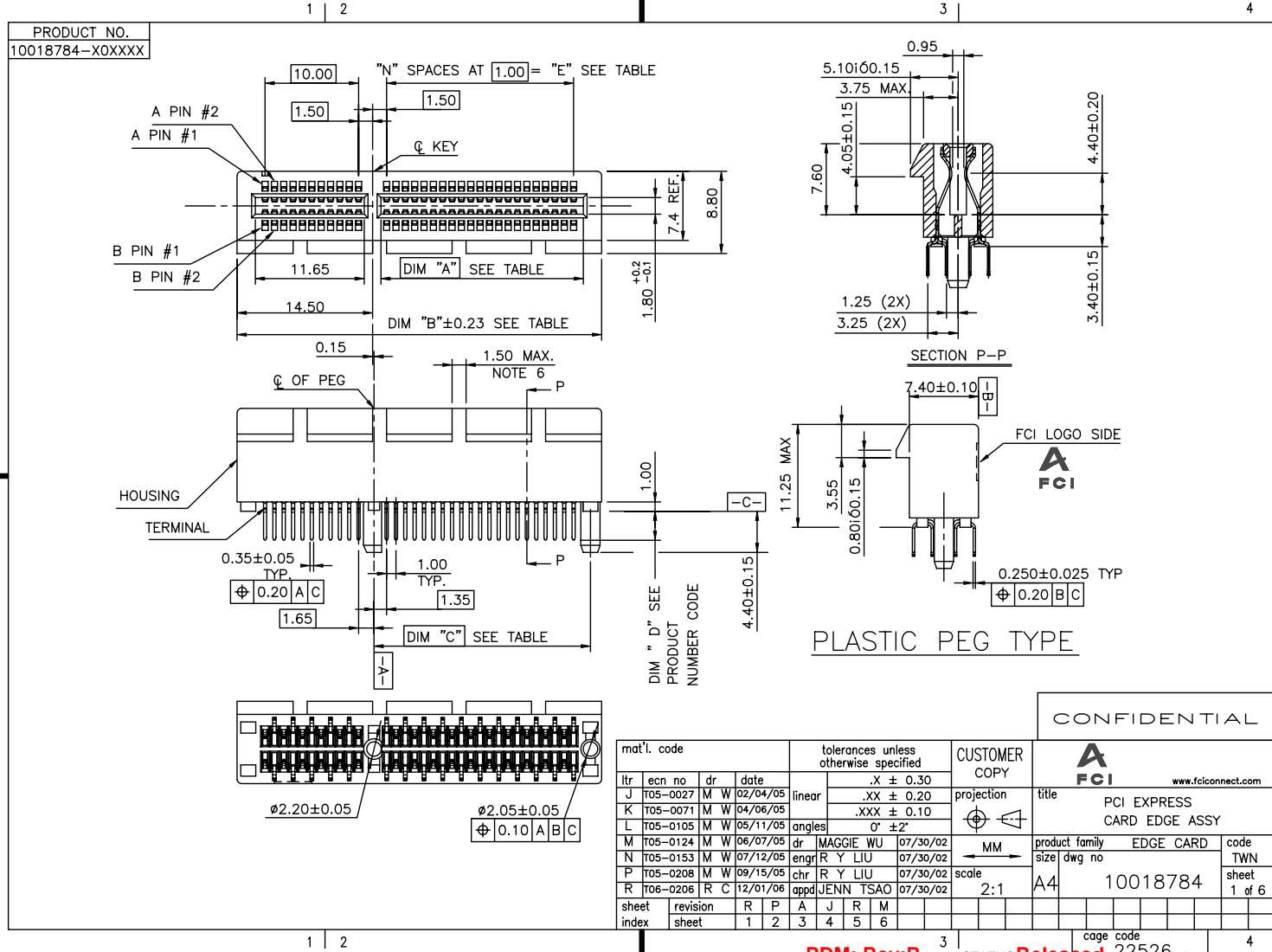


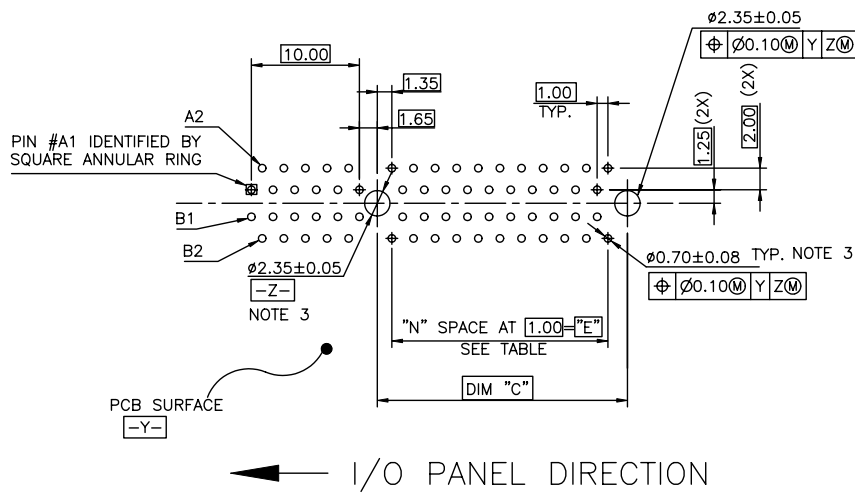


Tous droits strictement réservés. Reproduction ou communication à des tiers interdite sous quelque forme que ce soit sans autorisation écrite du propriétaire. Propriété de c FCI. Droits de reproduction FCI.

All rights strictly reserved. Reproduction or issue to third parties in any form whatever is not permitted without written authority from the proprietor. Property of FCI. Copyright FCI.



mat'l. code				tolerances unless otherwise specified				CUSTOMER COPY		<div><div>A</div><div>FCI</div><div>www.fciconnect.com</div></div>			
ltr	ecn no	dr	date	linear	.X ± 0.30		projection 		title	PCI EXPRESS		code	
					.XX ± 0.20					CARD EDGE ASSY			
					.XXX ± 0.10								
M	T05-0105	M W	05/11/05	angles	0° ±2°								
J	T05-0027	M W	02/04/05		dr	MAGGIE WU	07/30/02		scale 2:1	product family	EDGE CARD	code	
K	T05-0071	M W	04/06/05		enrg	R Y LIU	07/30/02			size	dwg no	TWN	
L	T05-0124	M W	06/07/05		chr	R Y LIU	07/30/02					sheet	
N	T05-0153	M W	07/12/05		appd	JENN TSAO	07/30/02			A4	10018784	1 of 6	
P	T05-0208	M W	09/15/05										
R	T06-0206	R C	12/01/06										
sheet index	revision sheet	R	P	A	J	R	M						
		1	2	3	4	5	6						



RECOMMENDED FOOTPRINT

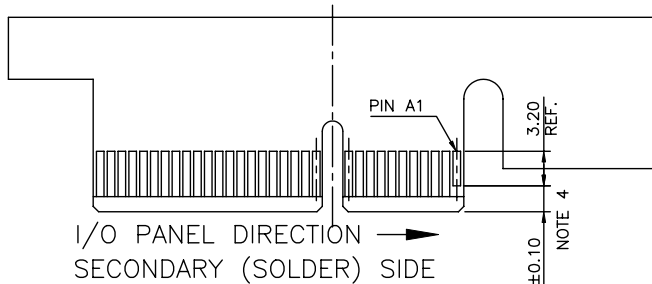
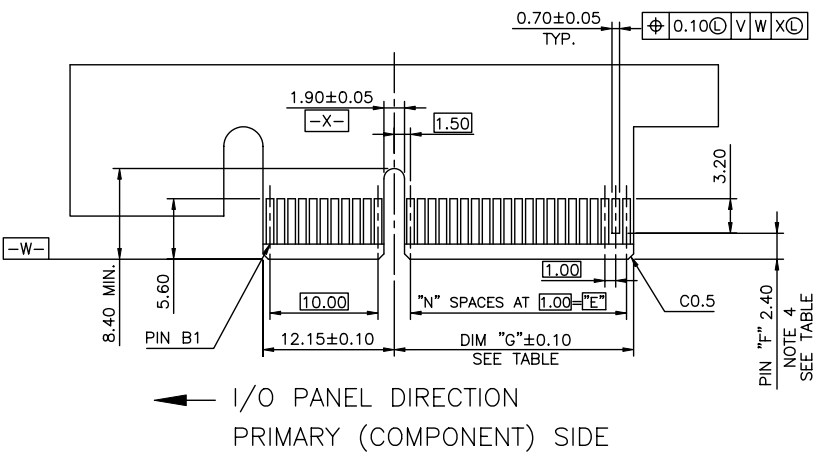
CONFIDENTIAL

mat'l. code				tolerances unless otherwise specified		CUSTOMER COPY	FCI www.fciconnect.com		
ltr	ecr no	dr	date	linear	.X ±		title	product family	code
A					.XX ±	projection	PCI EXPRESS CARD EDGE ASS'Y	EDGE CARD	TWN
				angles	.XXX ±	MM		size	sheet
					0° ±2°	scale		dwg no	3 of
				dr	MAGGIE WU 07/30/02	2:1			
				enrg	R Y LIU 07/30/02				
				chr	R Y LIU 07/30/02				
				appd	JENN TSAO 07/30/02				
sheet index	revision sheet								

ACAD

PDM: Rev:R

STATUS Released 22526 Form: Apr 08, 2010



#	POS	REF.	N	DIM "G"	"F"
36			6	8.15	B17
64			20	22.15	B31
98			37	39.15	B48
164			70	72.15	B81

PIN "F" SEE TABLE 2.40±0.10 NOTE 4

ADD-IN CARD EDGE-FINGER DIMENSIONS

CONFIDENTIAL

mat'l. code				tolerances unless otherwise specified		CUSTOMER COPY		FCI		www.fciconnect.com	
ltr	ecn no	dr	date	linear	.X ±	projection	title	product family	EDGE CARD	code	TWN
J				angles	.XX ±	MM	PCI EXPRESS CARD EDGE ASS'Y	size	dwg no	sheet	4 of
					.XXX ±						
					0° ±2°						
				dr	MAGGIE WU	07/30/02					
				enrg	R Y LIU	07/30/02					
				chr	R Y LIU	07/30/02					
				appd	JENN TSAO	07/30/02					
sheet index	revision sheet										

ACAD

PDM: Rev:R

STATUS Released 22526 Formed: Apr 08, 2010

1 | 2

3 |

4

NOTES:

- 1.MATERIAL:
HOUSING: NYLON, GLASS FILLED UL94V-0 RATE, SUITABLE FOR WAVE SOLDERING.
TERMINAL: COPPER ALLOY
PLATING: 50u" NICKEL UNDERPLATE ALL OVER
CONTACT AREA PLATING - SEE PRODUCT NUMBER CODE
SOLDER TAIL: TIN/LEAD (90/10) - SEE PRODUCT NUMBER CODE 100u" MIN. OVER 50u" NICKEL

- METAL BOARD LOCKS: COPPER ALLOY
FINISH: 100u" TIN/LEAD (90/10) OVER 50u" NICKEL
UNDERPLATE SEE PRODUCT NUMBER CODE
2.PRODUCT SPECIFICATION: GS-12-233

- ③THE HORIZONTAL AXIS FOR THE HOLE PATTERN IS ESTABLISHED BY A LINE THROUGH THE CENTER OF THE TWO Ø2.35 HOLES. THE VERTICAL AXIS IS 90° TO THE HORIZONTAL AXIS, THROUGH THE CENTER OF DATUM Z.

- ④NO TIE BAR PERMITTED FROM CARD EDGE TO LEADING EDGE OF PAD FOR PINS A1 AND PIN NUMBERS "F".

- ⑤CHAMFER EDGES MUST BE FREE OF CUTTING BURRS.

- ⑥FREQUENCY & LOCATION AT SUPPLIER DISCRETION. RIDGE MAY BE CONTINUOUS WITH NO BREAKS.

- 7.RoHS COMPATIBLE PRODUCT SPECIFICATIONS

a - PLATING:

- "LF" MEANS THE PRODUCT IS LEAD-FREE, 2um MINIMUM MATTE TIN OVER 1.27um MINIMUM NICKEL UNDERPLATE.

b - MANUFACTURING PROCESS COMPATIBILITY

- THE HOUSING WILL WITHSTAND EXPOSURE TO 260°C±5°C SOLDER BATH TEMPERATURE FOR 5 SECONDS IN A WAVE SOLDER APPLICATION WITH A 1.6mm MIN THICK CIRCUIT BOARD.
- THE HOUSING WILL WITHSTAND EXPOSURE TO 240°C±5°C SOLDER BATH TEMPERATURE FOR 5 SECONDS IN A WAVE SOLDER APPLICATION WITH A 1.6mm MIN THICK CIRCUIT BOARD.(For 10018784-X 0 X X X X(X X) options)

CONNECTOR	# POS	REF.	N	DIM "A"	DIM "B"	DIM "C"	"E"
1 PORT	36		6	7.65	25.00	9.15	6.00
4 PORT	64		20	21.65	39.00	23.15	20.00
8 PORT	98		37	38.65	56.00	40.15	37.00
16 PORT	164		70	71.65	89.00	73.15	70.00

PRODUCT NUMBER CODE
10018784-X X X X X X X X

HOUSING COLOR OPTIONS

- 0-WHITE
1-BLACK

PEGS OPTIONS

- 0-PLASTIC PEGS
1-METAL BOARD LOCKS

LEAD FREE OPTION

- LEAVE BLANK FOR TERMINAL PLATING 3,4,5
"LF" FOR TERMINAL PLATING OPTION 0,1,2

POS OPTIONS

- 0-36
1-64
2-98
3-164

PACKAGING OPTIONS

- T-TRAY PACKAGING
M-TRAY PACKAGING & MYLAR TAPE FOR PICK-N-PLACE. SEE FIGURE 1

TERMINAL PLATING OPTIONS

- 0-50u" Ni UNDERPLATE
30u" Au CONTACT AREA
100u" TIN TAIL AREA ----- COMPATIBLE RoHS
1-50u" Ni UNDERPLATE
15u" Au CONTACT AREA
100u" TIN TAIL AREA ----- COMPATIBLE RoHS
2-50u" Ni UNDERPLATE
GOLD FLASH CONTACT AREA
100u" TIN TAIL AREA ----- COMPATIBLE RoHS

- 3-50u" Ni UNDERPLATE
30u" Au CONTACT AREA
100u" TIN/LEAD TAIL AREA ----- INCOMPLIANT RoHS
4-50u" Ni UNDERPLATE
15u" Au CONTACT AREA
100u" TIN/LEAD TAIL AREA ----- INCOMPLIANT RoHS
5-50u" Ni UNDERPLATE
GOLD FLASH CONTACT AREA
100u" TIN/LEAD TAIL AREA ----- INCOMPLIANT RoHS

	DIM "D"	PCB THICKNESS	BOARD LOCKS DIM"G"
0	2.30 ±0.13	1.56±0.10	1.70±0.15
1	3.10 ±0.13	2.36±0.10	2.50±0.15

TAIL LENGTH OPTIONS

CONFIDENTIAL

mat'l. code				tolerances unless otherwise specified		CUSTOMER COPY		FCI www.fciconnect.com	
ltr	ecn	no	dr	date	linear	.X ±	projection	title	
R						.XX ±		PCI EXPRESS	
						.XXX ±		CARD EDGE ASS'Y	
					angles	0° ±2°			
					dr	MAGGIE WU 07/30/02	MM	product family	
					enrg	R Y LIU 07/30/02		EDGE CARD	
					chr	R Y LIU 07/30/02	scale	code	
					appd	JENN TSAO 07/30/02	1:1	TWN	
sheet index		revision sheet						A4 10018784 sheet 5 of	

1 | 2

3 |

4

ACAD

PDM: Rev:R

STATUS Released 22526
Released: Apr 08, 2010

Tous droits strictement reserves. Reproduction ou communication a des tiers interdite sous quelque forme que ce soit sans autorisation écrite du propriétaire. Propriété de c FCI. Droits de reproduction FCI.

All rights strictly reserved. Reproduction or issue to third parties in any form whatever is not permitted without written authority from the proprietor. Property of FCI. Copyright FCI.

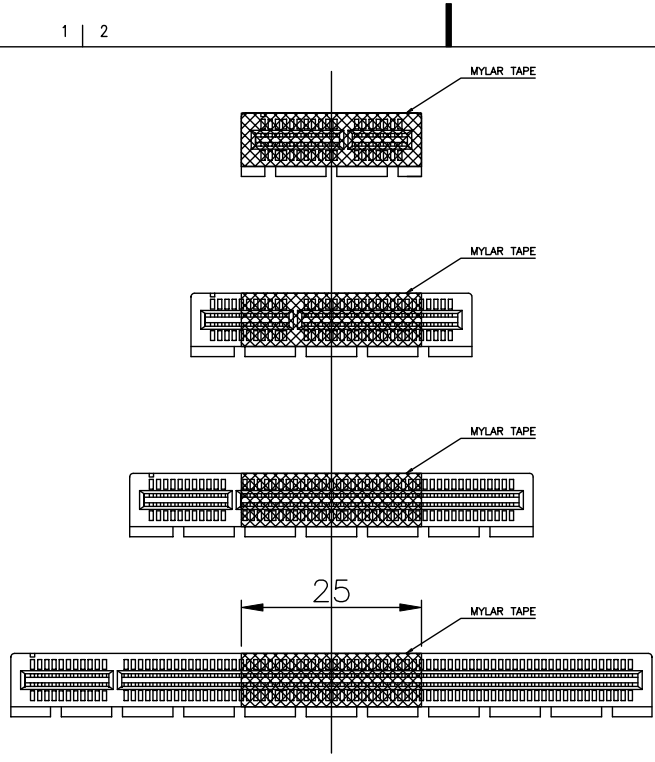


FIGURE 1

CONFIDENTIAL									
<div><div>FCI</div><div>www.fciconnect.com</div></div>									
title				product family			code		
PCI EXPRESS				EDGE CARD			TWN		
CARD EDGE ASS'Y				size			sheet		
A4				10018784			6 of		

mat'l. code				tolerances unless otherwise specified			
ltr	ecn no	dr	date	linear	.X ± 0.25		
M					.XX ± 0.13		
					.XXX ± 0.05		
				angles	0° ± 2°		
		dr	MAGGIE WU		06/07/05		
		engnr	R Y LIU		06/07/05		
		chr	R Y LIU		06/07/05		
		appd	JENN TSAO		06/07/05		
sheet index	revision sheet						