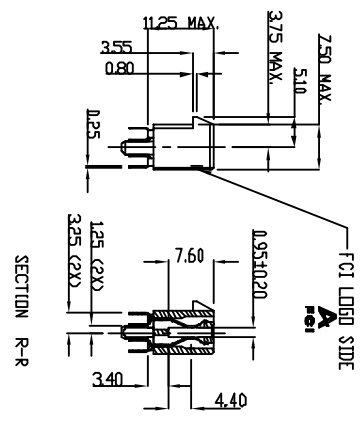
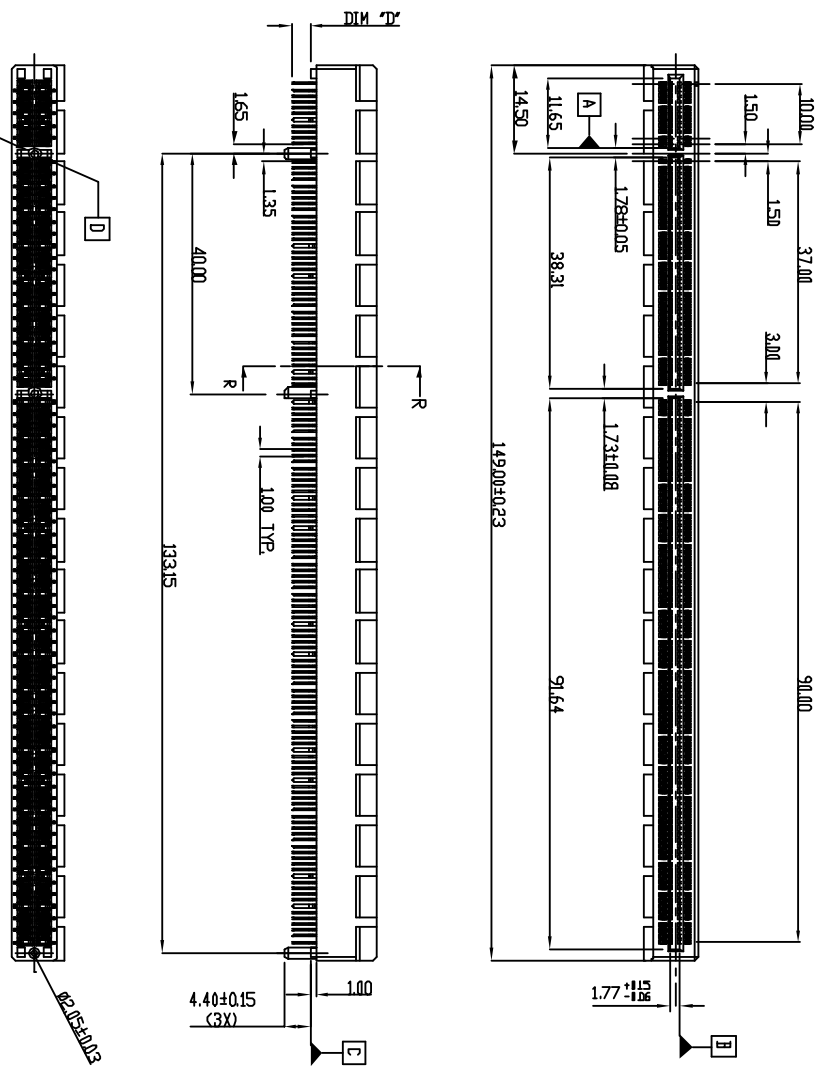


PROD NO  
SEE NOTE

1 | 2

3

4



Ø2.20±0.03 (2X)

D

Ø2.03±0.02

mod'l. code		tolerances unless otherwise specified		CUSTOMER COPY		FCI		www.fcimed.com	
lit	ecn no	dr	date	X ±.38	projection	title	product family	code	sheet
A	T05-0240	JH	01/22/05	.XX ±.25	MM	PCI-E 280P CARD EDGE	PCI		1 of 4
B	T05-0013	JH	1/18/06	.XXX ±.10		specie	10057596		
		angles	dr	0° ±2°					
			enigr	JASON HSU 10/22/05					
			chf	STERLING LIN 10/22/05					
			pppl	HC LIU 10/22/05					
street	revision	B	B	B					
index	sheet	1	2	3					

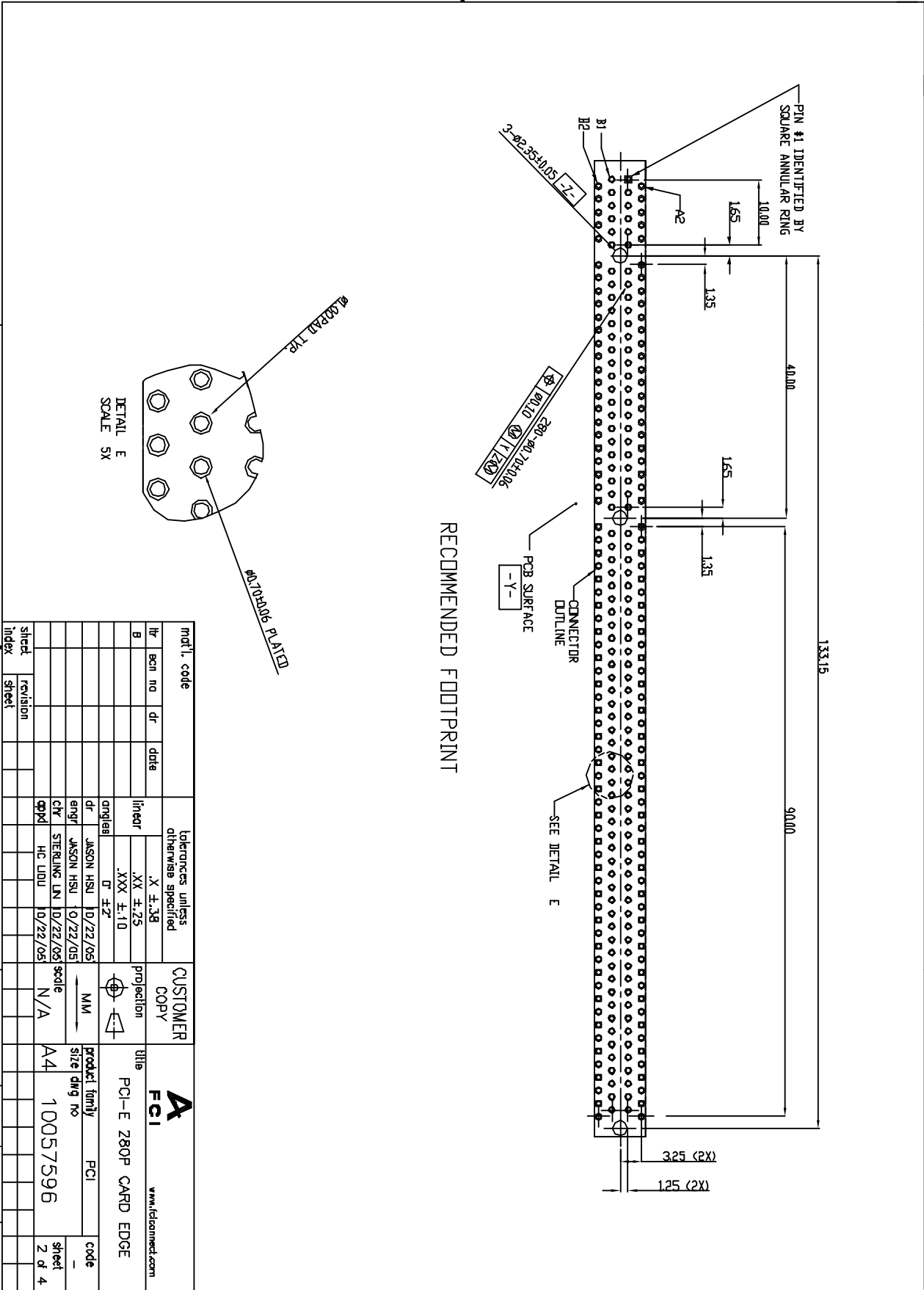
ACAD

1 | 2

3

4

code  
22526

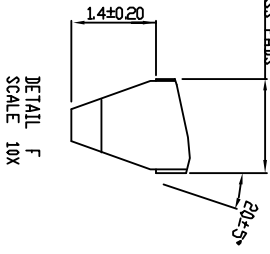
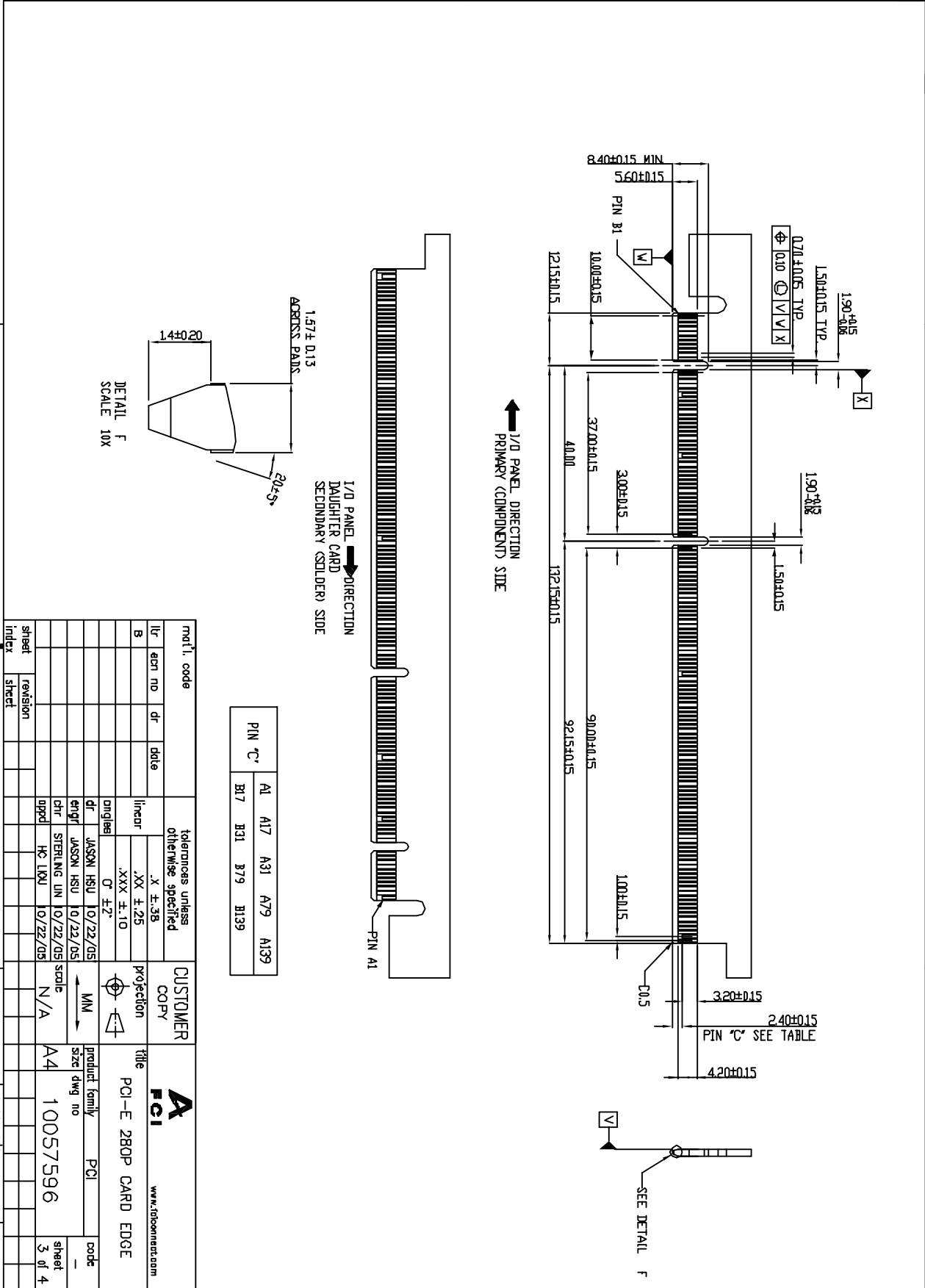


RECOMMENDED FOOTPRINT

matl. code	mot. code	tolerances unless otherwise specified	CUSTOMER COPY	title	product family	code
lt	ben no	dr	date	lithed	.XX ±.25	
B				engr	.XXX ±.10	
				dr	D ±.2"	
				engr	JASON HSU	D/22/05
				dr	JASON HSU	D/22/05
				engr	STERLING LIN	O/22/05
				dr	HC LDUU	D/22/05
				proj	N/A	
sheet	revision			size	A4	10057596
index	sheet			sheet		2 of 4

ACAD

page code  
22526



1/2 PANEL DIRECTION  
DAUGHTER CARD  
SECONDARY (SOLDER) SIDE

PIN C'	A1	A17	A31	A79	A139
	B17	B31	B79	B139	

mat'l. code	tolerances unless otherwise specified	CUSTOMER COPY	title
lir	.X ±.38		PCI-E 280P CARD EDGE
B	.XX ±.25		
	.XXX ±.10		
	0° ±2°		
dr	JASON HSU 10/22/05		
enqr	JASON HSU 10/22/05		
chr	STERLING LIN 10/22/05		
appd	HC LKJL 10/22/05		
sheet	scale		
index	N/A		
revision			
sheet	A4		
index			

ACAD

code 22526



1 | 2

3

4

NOTES:  
 1. MATERIAL: THERMOPLASTIC WITH GLASS FIBER, UL94V-0,  
 HOUSING: GOLD IN BLACK,  
 CONTACTS: COPPER ALLOY.

2. FINISH:  
 CONTACTS: GOLD PLATING ON CONTACT AREA,  
 100 U/MIN. TIN/LEAD OR MATTE TIN (LEAD FREE OPTION) PLATING ON SOLDER TAILS,  
 50 U/MIN. NICKEL UNDERPLATING OVER ALL.

3. DURABILITY: 50 CYCLES.

4. ROHS COMPATIBLE PRODUCT SPECIFICATIONS

a. PLATING: "LF" MEANS THE PRODUCT IS LEAD FREE, 25um min. MATTE PURE TIN OVER 1.27um MIN. NICKEL UNDERPLATE.

b. MANUFACTURING PROCESS COMPATIBILITY: THE HOUSING WILL WITHSTAND EXPOSURE TO 260C+5C° SOLDER BATH TEMPERATURE FOR 5 SECONDS IN A WAVE SOLDER APPLICATION WITH A 157MM THICK CIRCUIT BOARD.

PRODUCT NUMBER CODE  
 10057596 - X X X X X X X X X X

LEAD FREE

HOUSING COLOR OPTIONS

1-BLACK

PEGS OPTIONS  
 0-PLASTIC PEGS

TERMINAL PLATING OPTIONS

0-50U" NI UNDERPLATE

30U" Au CONTACT AREA

100U" TIN TAIL AREA -----COMPATIBLE ROHS

1-50U" NI UNDERPLATE

15U" Au CONTACT AREA -----COMPATIBLE ROHS

100U" TIN TAIL AREA -----COMPATIBLE ROHS

2-50U" N UNDERPLATE

GOLD FLASH CONTACT AREA -----COMPATIBLE ROHS

100U" TIN TAIL AREA -----COMPATIBLE ROHS

LEAD FREE

PACKAGING OPTIONS  
 T-TRAY PACKAGING  
 RESERVE

0

TAIL LENGTH OPTIONS

1	2	3
1	310	2364010
2	254	1564010

100U" TIN TAIL AREA -----COMPATIBLE ROHS

mat'l. code	part no.	dr	date	tolerances unless otherwise specified	CUSTOMER COPY	title	product family	code
B				X ±.38 .XX ±.25 .XXX ±.10	projection	PCI-E 280P CARD EDGE	PCI	
				0 ±.2	MNI			
				JASON HSU 10/22/05				
				enpl JASON HSU 07/22/05				
				chr STRILING LIN 10/22/05	scale			
				qpld HC LCU 10/22/05	N/A			
sheet	revision							
index	sheet							

**FCI** www.fci.com

PCI-E 280P CARD EDGE

code 10057596

sheet 4 of 4

1 | 2

3

4

ACAD

code code  
 22526