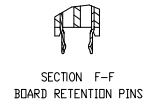
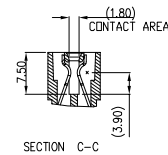
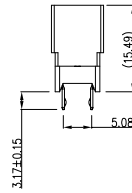
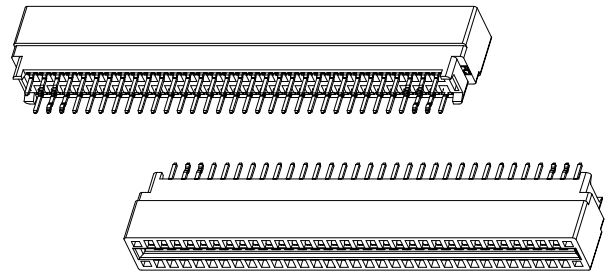
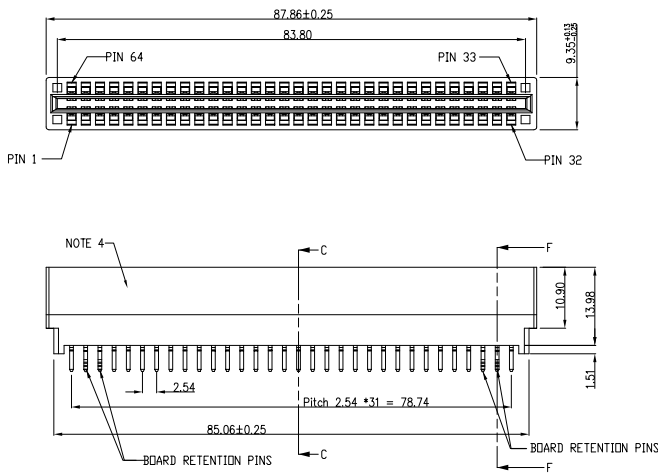


PRODUCT NO  
10046971-001LF

REV	ECR NUMBER	REV'D BY	DATE
E	DG06-0306	RYAN YUAN	08/04/06
F	DG06-0524	JULIA WANG	12/26/06
C	DG05-0287	Steven Wang	08/18/05
D	DG05-0461	JM Guo	11/14/05



- NOTE:
- MATERIAL:  
HOUSING: HIGH TEMPERATURE THERMOPLASTIC,  
UL 94 V-0 FLAME RETARDANT, BLACK.  
TERMINAL: HIGH CONDUCTIVITY COPPER ALLOY.  
PLATING SPEC AS BELOW:  
Ni 50u" UNDER PLATED.  
Au 30u" OVER CONTACT AREA, (ONE SIDE)  
MATTE TIN 120u" OVER SOLDERING AREA.
  - PACKING SPEC. GS-14-937.
  - PRODUCT SPEC. GS-12-338.
  - MANUFACTURER'S NAME, P/N AND DATE CODE TO APPEAR ON THIS SURFACE AS PER GS-24-007.

5. PART NUMBER 10046971-001LF MEETS EUROPEAN UNION DIRECTIVE AND OTHER COUNTRY REGULATIONS AS DESCRIBED IN GS-22-008.  
THE HOUSING WILL WITHSTAND EXPOSURE TO 260°C PEAK TEMPERATURE FOR 10 SECONDS IN A WAVE SOLDER APPLICATION WITH A CIRCUIT BOARD.

ALL RIGHT RESERVED. REPRODUCTION OR ISSUE TO THIRD PARTIES IN ANY FORM WHATEVER IS NOT PERMITTED WITHOUT WRITTEN AUTHORITY FROM THE PROPRIETOR. PROPERTY OF F C I. COPYRIGHT F C I.

GENERAL TOLERANCE			THIRD ANGLE PROJECTION		DESCRIPTION					
MILLIMETER	INCH	ANGLE	DIMENSIONAL LIMITS APPLY AFTER PLATING (IF SPECIFIED)		POWER EDGE CONNECTOR OF VERTICAL TYPE (32PX2)					
.XX ±0.8	.XXX ±0.03	±3°	DRAWN	Benny Chen	11/11/04	SCALE	SIZE	DRAWING NO.	REV	SHEET
.XXX ±0.25	.XXXX ±0.010		CHECKED	Paul Wang	03/20/05	1:1	A4	10046971	F	1 OF 4
.XXX ±0.13	.XXXX ±0.005		APPROVED	Joseph Hsia	03/23/05					

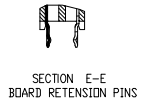
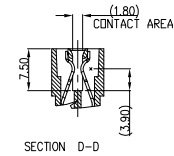
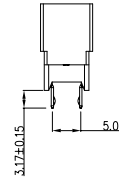
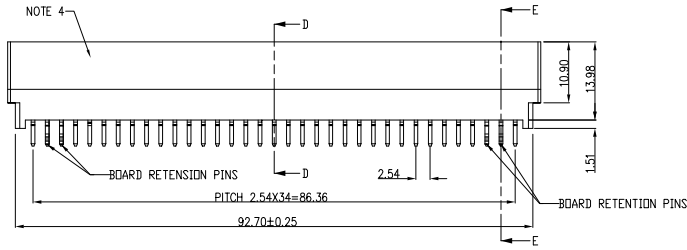
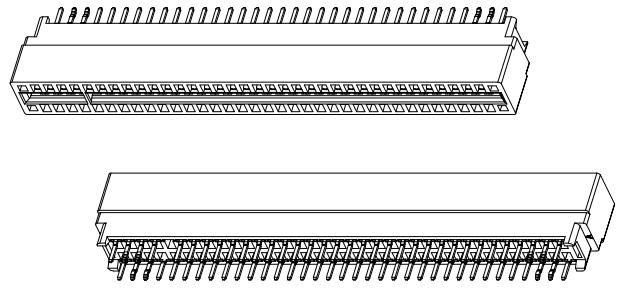
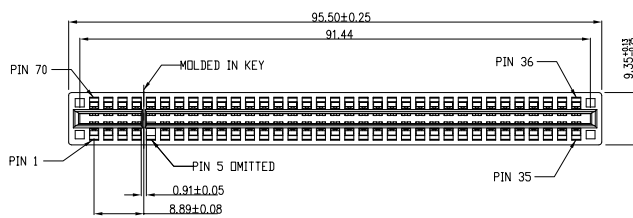
PDM: Rev:F

STATUS:Released

Printed: Dec 03, 2010



PRODUCT NO  
10046971-003LF



- NOTE:
- MATERIAL:  
HOUSING: HIGH TEMPERATURE THERMOPLASTIC,  
UL 94 V-0 FLAME RETARDANT, BLACK.  
TERMINAL: HIGH CONDUCTIVITY COPPER ALLOY.  
PLATING SPEC AS BELOW:  
Ni 50µ" UNDER PLATED.  
Au 30µ" OVER CONTACT AREA. (ONE SIDE)  
MATTE TIN 120µ" OVER SOLDERING AREA.
  - PACKING SPEC. GS-14-937.
  - PRODUCT SPEC. GS-12-338.
  - MANUFACTURER'S NAME, P/N AND DATE CODE TO APPEAR ON THIS SURFACE AS PER GS-24-007.

5. PART NUMBER 10046971-003LF MEETS EUROPEAN UNION DIRECTIVE AND OTHER COUNTRY REGULATIONS AS DESCRIBED IN GS-22-008. THE HOUSING WILL WITHSTAND EXPOSURE TO 260°C PEAK TEMPERATURE FOR 10 SECONDS IN A WAVE SOLDER APPLICATION WITH A CIRCUIT BOARD.

ALL RIGHT RESERVED. REPRODUCTION OR ISSUE TO THIRD PARTIES IN ANY FORM WHATEVER IS NOT PERMITTED WITHOUT WRITTEN AUTHORITY FROM THE PROPRIETOR. PROPERTY OF F C I. COPYRIGHT F C I.

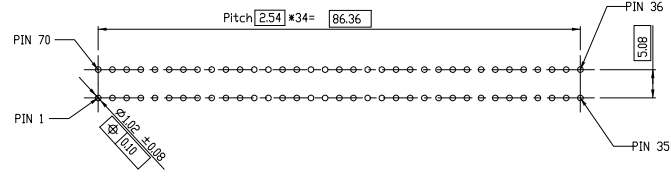
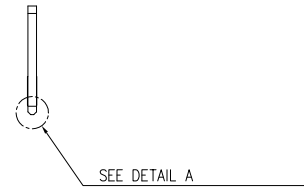
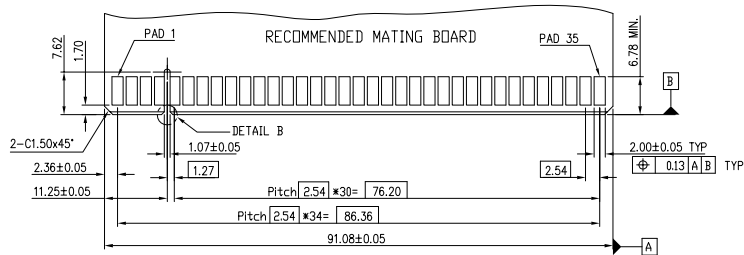
CUSTOMER COPY			THIRD ANGLE PROJECTION		FCI				
DO NOT SCALE DRAWING			DIMENSIONAL LIMITS APPLY AFTER PLATING (IF SPECIFIED)		DESCRIPTION				
GENERAL TOLERANCE			NAME	DATE	POWER EDGE CONNECTOR VERTICAL TYPE (35PX2)				
MILLIMETER	INCH	ANGLE	DRAWN		SCALE	SIZE	DRAWING NO.	REV	SHEET
.XX ±0.8	.XX ±0.03	±3°	CHECKED	Benny Chen	1:1	A4	10046971	F	3 OF
.XXX ±0.25	.XXX ±0.010		APPROVED	Joseph Hsio					
.XXX±0.13	.XXXX±0.005								

PDM: Rev:F

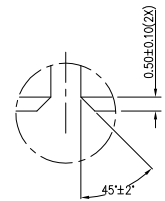
STATUS:Released

1 Printed: Dec 03, 2010

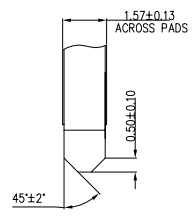
PRODUCT NO  
10046971-003LF



RECOMMENDED PCB LAYOUT  
AND THE THICKNESS IS 2.36mm



DETAIL B  
SCALE 5:1



DETAIL A  
SCALE 5:1

ALL RIGHT RESERVED. REPRODUCTION OR ISSUE TO THIRD PARTIES IN ANY FORM WHATEVER IS NOT PERMITTED WITHOUT WRITTEN AUTHORITY FROM THE PROPRIETOR. PROPERTY OF F C I. COPYRIGHT F C I.

CUSTOMER COPY			THIRD ANGLE PROJECTION										
									DIMENSIONAL LIMITS APPLY AFTER PLATING (IF SPECIFIED)				
DO NOT SCALE DRAWING			GENERAL TOLERANCE		NAME		DATE		DESCRIPTION				
					Benny Chen		01/27/05		RECOMMENDED LAYOUT OF MATING AND PCB BOARD VERTICAL TYPE (35PX2)				
MILLIMETER	INCH	ANGLE	CHECKED	APPROVED	Paul Wang	Joseph Hsia	03/25/05	03/26/05	SCALE	SIZE	DRAWING NO.	REV	SHEET
.XX ±0.8 .XXX ±0.25 X.XXX±0.13	.XX ±0.03 .XXX ±0.010 .XXXX±0.005	±3°							~	A4	10046971	F	4 OF 4

PDM: Rev:F STATUS:Released 1 Printed: Dec 03, 2010