

Wire-to-Board Connectors

Except for DUO-TYNE flag connectors, which are exclusively for wire-to-board application, the connectors presented in this section are primarily wire-to-board connectors, but do have some board-to-board capabilities. These connectors are available in a wide range of styles to suit almost any wire-to-board application. This versatile connector family features snap-in contacts of various configurations including crimp, post, eyelet and solder types.

Wire-to-board crimp, snap-in contacts are easily inserted into the connector housing and are furnished in reel-fed strip form for automatic machine application and loose piece for hand tool termination. The Wire-to-Board Printed Circuit Board Connector family includes:

Crimp Snap Twin Leaf Connectors

(Pages 154-163)

These connectors are designed for high density wire-to-board applications and feature bifurcated, crimp and solder eyelet contacts on .100 [2.54] and .125 [3.18] centers. Design flexibility allows the customer to save by purchasing only enough contacts for his circuit design requirements. Contact styles include crimp, solder eyelet and vertical and right-angle posts, in a variety of sizes.

AMP-LEAF Connectors

(Pages 164-172)

These connectors are for single- or double-sided printed circuit boards. Snap-in contacts lock in place on .156 [3.96] centers, maintaining constant pressure on circuit paths. Contact options are available for precision crimped terminations and solder dip applications.

High Current Connectors

(Pages 173-176)

Designed for a current capability of up to 30 amperes, these connectors are an economical answer to the costly problem of interconnecting high current printed circuitry. Styles are available for wire-to-board and board-to-board applications. Contacts are on .312 [7.92] centers.

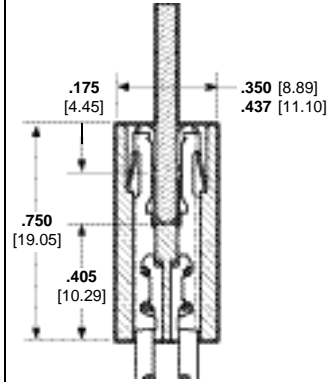
DUO-TYNE Flag Connectors

(Pages 177-180)

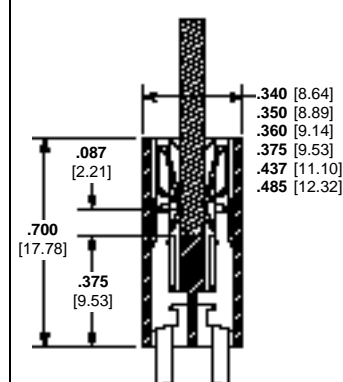
These economical connectors are designed to meet the quality and reliability requirements of industries such as appliance controls, vending machine subassemblies, television, stereo, business machines and other areas with similar control needs. The right-angle design of the connector permits close-quarter cabling. Contacts are doubly locked in when a PC board is inserted.

Wire-to-Board Connector Selection Guide

**Crimp Snap
Twin Leaf Connectors
(Pages 154-163)**



**AMP-LEAF
Connectors
(Pages 164-172)**



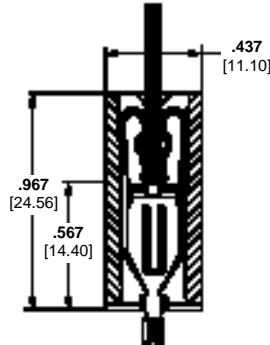
Centerlines

| | | |
|-------------|---|---|
| .100 [2.54] | X | |
| .125 [3.18] | X | |
| .156 [3.96] | X | X |
| .197 [5.00] | | |
| .260 [6.60] | | |
| .312 [7.92] | | |

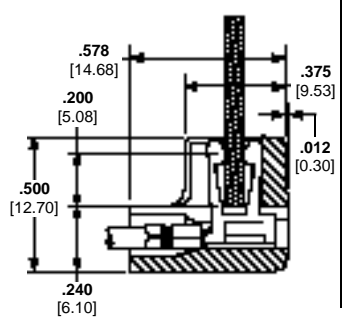
Styles

| | | |
|------------------|---|---|
| Crimp | X | X |
| Right-Angle Post | X | X |
| Wrap-Type Post | X | X |
| Solder Eyelet | X | X |
| Solder Tail | X | X |
| Double Sided | X | X |
| Single Sided | X | X |

**High Current
Connectors
(Pages 173-176)**



**DUO-TYNE Flag
Connectors
(Pages 177-180)**



Centerlines

| | | |
|-------------|---|---|
| .100 [2.54] | | |
| .125 [3.18] | | |
| .156 [3.96] | | X |
| .197 [5.00] | | |
| .260 [6.60] | | |
| .312 [7.92] | X | |

Styles

| | | |
|------------------|---|----|
| Crimp | X | X |
| Right-Angle Post | | |
| Wrap-Type Post | | |
| Solder Eyelet | | |
| Solder Tail | X | |
| Double Sided | X | X* |
| Single Sided | | |

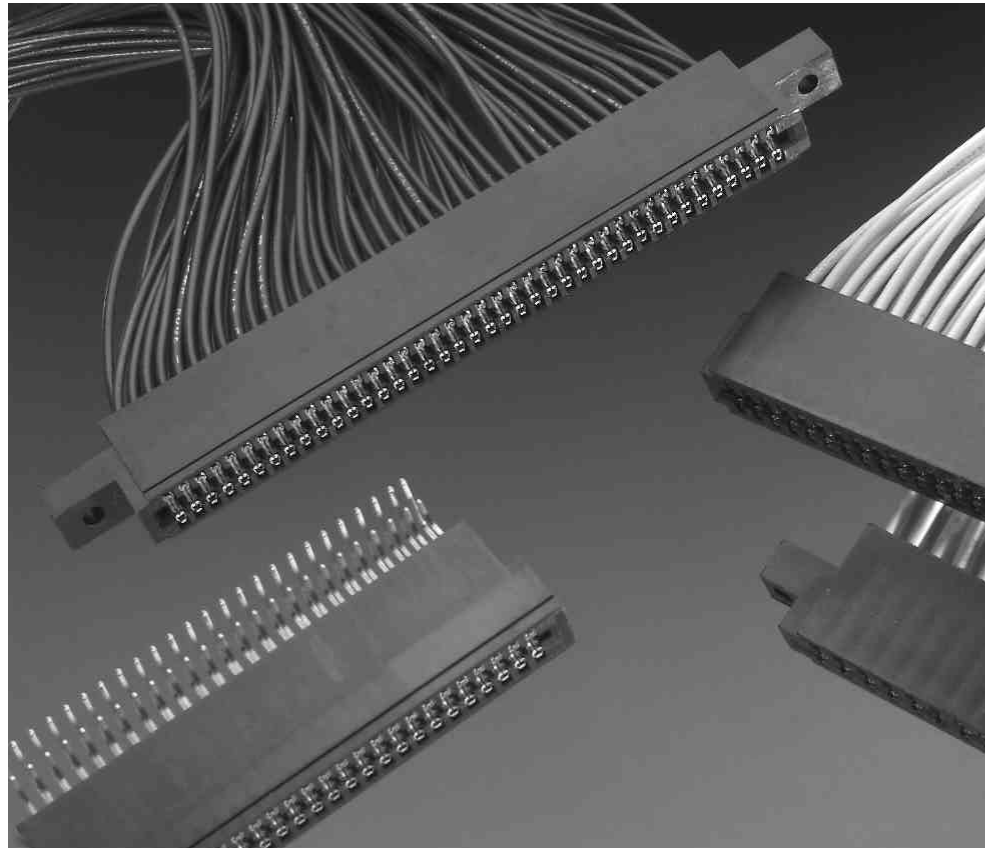
*Double-sided board; single readout.

Wire-to-Board Connectors

Crimp Snap Twin Leaf Connectors

Product Facts

- Crimp snap-in, solder eye-let, .025 [0.64] square posted and right angle contacts on .100 [2.54], .125 [3.18] or .156 [3.96] centers
- Customer buys only enough contacts to meet circuit and retention requirements
- Contacts bifurcated for redundancy
- Single leaf version available for higher contact normal forces
- Low insertion forces
- Accommodates AWG 16-28 [1.4-0.08 mm²] wire range and insulation diameters .035-.105 [0.89-2.67]
- Large variety of connector sizes
- Cavity identification on face of card slot and wire entry
- High speed automatic machine terminations provide uniform reliability at lowest applied cost
- Recognized under the Component Program of Underwriters Laboratories Inc. File No. E28476
- Certified by Canadian Standards Association File No. LR 7189



The Crimp Snap Twin Leaf Connector is designed especially for high density wire-to-board applications. Termination styles include crimp, solder, posted and right angle, in a variety of sizes.

Design flexibility allows the customer to save by purchasing only enough contacts for the circuit requirements. Easy replaceability of each contact cuts repair cost in the event of contact or wire damage.

Performance Specifications

Contact Rating*: 5 amperes, continuous 3 amperes, max. (for .025 [0.64] posted contacts)

Contact Resistance: 10 milliohms, max.

Insulation Resistance: 5000 megohms (initial)
1000 megohms

Voltage Rating:
.100 [2.54] Centerline-1000 Vrms
.125 [3.18] Centerline-1500 Vrms
.156 [3.96] Centerline-1800 Vrms

Insertion Force (per pair): Twin Leaf-10 oz. [2.78 N], max.; 7.6 oz. [2.11 N], avg. Non-Bifurcated Contacts-20 oz. [5.57 N], max.

Extraction Force (per pair): Twin Leaf-0.7 oz. [0.195 N], min.; 1.2 oz. [0.334 N], avg.

Operating Temperature: -55°C to +105°C

*Consult Tyco Electronics engineering when paralleling contacts for power applications.

Crimp Snap Twin Leaf Connectors (Continued)

Crimp, Snap-In Contacts

Material and Finish:

Phosphor bronze, plated .000030 [0.00076] nickel on entire contact, with the addition of one of the following platings:

Plating A—.000030 [0.00076] gold in mating area

Plating B—.000015 [0.00038] gold in mating area

Plating C—.000050 [0.00127] gold in mating area, with gold flash on remainder of contact

Plating D—.000015 [0.00038] gold in mating area, with gold flash on remainder of contact

Note: Tin plating is available upon request.

Related Product Data:

Performance Specifications—page 154

Application Tooling—pages 184,185

Connector Housings—pages 157, 159, 161

Technical Documents:

(pages 186, 187):

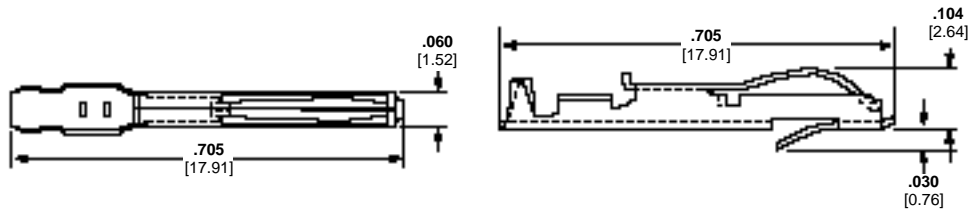
Product Specification 108-9031

Application Specification 114-9004

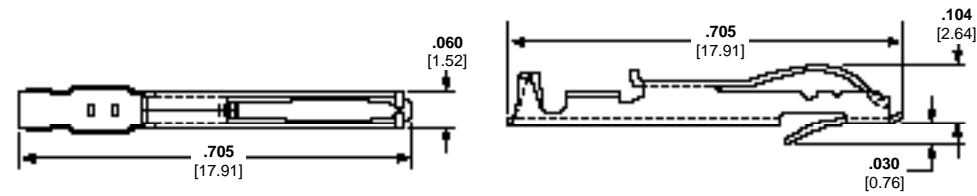
Instruction Sheets

408-7527, 408-7529, 408-7531, 408-7551, 408-7556, 408-7583

Note: Only loose piece contacts manufactured and supplied by Tyco Electronics are to be used with the hand tools listed on this page. No attempt should be made to produce loose piece parts from a strip since special cutoff tooling is required to assure a properly functioning part.



| Connector Centerline | Wire Size Range AWG/mm ² | Insulation Dia. Range | Contact Finish (Plating) | Contact Part Numbers | | Applicator for AMP-O-LECTRIC Machine* | Applicator for Stripper/Crimper Machine | Color Code | Hand Tool |
|----------------------|-------------------------------------|------------------------|--------------------------|----------------------|------------|---------------------------------------|---|------------|-----------|
| | | | | Loose Piece | Strip Form | | | | |
| .100 2.54 | 28-24 0.08-0.2 | .035-.055 0.89-1.40 | A | 583616-4 | 583616-2 | 466577-4 | 466912-1 | Orange | 90268-1 |
| | | | B | 583616-5 | 583616-3 | | | | |
| | | | C | 583616-9 | 583616-8 | | | | |
| | | | D | 1-583616-1 | 1-583616-0 | | | | |
| .125 3.18 | 24-20 0.2-0.6 | .048-.060 1.22-1.52 | A | 583853-5 | 583853-3 | 466622-2 | 466919-1 | Green | 91535-1 |
| | | | B | 583853-4 | 583853-2 | | | | |
| | | | C | 583853-9 | 583853-8 | | | | |
| | | | D | 1-583853-1 | 1-583853-0 | | | | |
| .156 3.96 | 28-24 0.08-0.2 | .035-.055 0.89-1.40 | A | 583616-4 | 583616-2 | 466577-4 | 466912-1 | Orange | 90268-1 |
| | | | B | 583616-5 | 583616-3 | | | | |
| | | | C | 583616-9 | 583616-8 | | | | |
| | | | D | 1-583616-1 | 1-583616-0 | | | | |
| .156 3.96 | 24-20 0.2-0.6 | .048-.060 1.22-1.52 | A | 583853-5 | 583853-3 | 466622-2 | 466919-1 | Green | 91535-1 |
| | | | B | 583853-4 | 583853-2 | | | | |
| | | | C | 583853-9 | 583853-8 | | | | |
| | | | D | 1-583853-1 | 1-583853-0 | | | | |
| .156 3.96 | 22-18 0.3-0.9 | .049-.095 1.24-2.41 | A | 583649-6 | 583649-3 | 466713-2 | 466928-1 | Violet | 90264-1 |
| | | | B | 583649-5 | 583649-2 | | | | |
| | | | C | 583649-7 | 583649-4 | | | | |
| | | | — | — | — | | | | |
| .156 3.96 | 20-16 0.6-1.4 | .073-.090 1.85-2.29 | A | 583875-6 | 583875-5 | 687775-2 | — | White | 90285-1 |
| | | | B | 583875-3 | 583875-2 | | | | |
| | | | C | 583875-3 | 583875-2 | | | | |
| | | | — | — | — | | | | |



Crimp, Snap-In Contacts, Non-Bifurcated

Material and Finish:

Phosphor bronze, plated .000030 [0.00076] nickel on entire contact, with the addition of one of the following platings:

Plating A—.000030 [0.00076] gold in mating area

Plating B—.000015 [0.00038] gold in mating area

Note: Tin plating is available upon request.

Related Product Data:

(See above)

| Connector Centerline | Wire Size Range AWG/mm ² | Insulation Dia. Range | Contact Finish (Plating) | Contact Part Numbers | | Applicator for AMP-O-LECTRIC Machine* | Applicator for Stripper/Crimper Machine | Color Code | Hand Tool |
|----------------------|-------------------------------------|------------------------|--------------------------|----------------------|------------|---------------------------------------|---|------------|-----------|
| | | | | Loose Piece | Strip Form | | | | |
| .100 2.54 | 28-24 0.08-0.2 | .035-.055 0.89-1.40 | A | 531476-5 | 531476-4 | 466577-4 | 466912-1 | Orange | 90268-1 |
| | | | B | 531477-5 | 531477-4 | | | | |
| | | | A | 531477-4 | 531477-2 | | | | |
| | | | — | — | — | | | | |
| .125 3.18 | 24-20 0.2-0.6 | .048-.060 1.22-1.52 | A | 531477-5 | 531477-4 | 466622-2 | 466919-1 | Green | 91535-1 |
| | | | B | 531477-3 | 531477-2 | | | | |
| | | | — | — | — | | | | |
| | | | — | — | — | | | | |
| .156 3.96 | 28-24 0.08-0.2 | .035-.055 0.89-1.40 | A | 531476-5 | 531476-4 | 466577-4 | 466912-1 | Orange | 90268-1 |
| | | | B | 531477-5 | 531477-4 | | | | |
| | | | A | 531477-5 | 531477-4 | | | | |
| | | | B | 531477-3 | 531477-2 | | | | |
| .156 3.96 | 22-18 0.3-0.9 | .045-.095 1.14-2.41 | A | — | 531478-4 | 466713-2 | 466928-1 | Violet | — |

*Applicators are for AMP-O-LECTRIC Model "K" machines. Consult Tyco Electronics for applicators for other bench machines and lead-making machines.

Snap-In Solder Eyelet Contacts

Material and Finish:

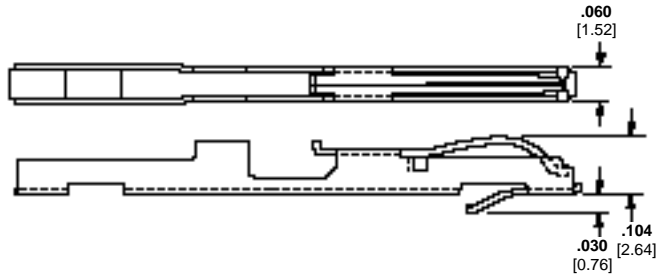
Phosphor bronze, plated .000030 [0.00076] nickel on entire contact, with the addition of one of the following platings:

Plating A—.000030 [0.00076] gold in mating area

Plating B—.000015 [0.00038] gold in mating area

Solder eyelet portion is tin plated.

Note: Tin plating of entire contact is available upon request.



Related Product Data:

Performance Specifications—page 154

Connector Housings—pages 157, 159, 161

| Connector Centerline | Contact Finish (Plating) | Part Numbers |
|----------------------|--------------------------|----------------------|
| .100 2.54 | A B | 583854-3 583854-5 |
| .125 3.18 | A | 530245-3 |

Technical Documents

(pages 186, 187):

Product Specification
108-9031

Application Specification
114-9004

Instruction Sheets 408-7527,
408-7529

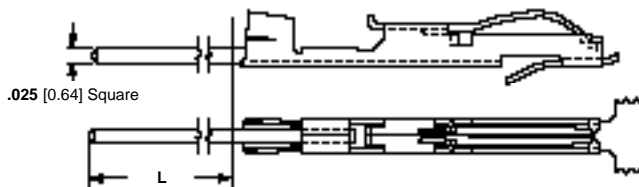
Snap-In Wrap Post Contacts

Material and Finish:

Contact—Phosphor bronze, plated .000015 [0.00038] gold in mating area, with entire contact underplated .000030 [0.00076] nickel

Post—Phosphor bronze, tin-plated

Note: Tin plated contacts are available upon request.



| Connector Centerline Spacing | Dimension L | Part Numbers |
|------------------------------|---------------|--------------|
| .100 2.54 | .451 11.46 | 583879-1 |
| | .535 13.59 | 583879-4 |
| .125 3.18 | .525 13.34 | 583884-1 |
| | .525 13.34 | 583884-1 |

Related Product Data:

Performance Specifications—page 154

Connector Housings—pages 157, 159, 161

Technical Documents:

(pages 186, 187):

Product Specification
108-9031

Application Specification
114-9004

Instruction Sheets 408-7527,
408-7529

Hand



Contact Extraction Tool



Crimp Snap Twin Leaf Connectors, .100 [2.54] Centerline

Housings

Material: Black glass-filled polyester, 94V-0 rated

Related Product Data:

Performance Specifications—page 154

Contacts—pages 155, 156

Accessories—page 162*

PCB Edge Pattern—page 163

Technical Documents:

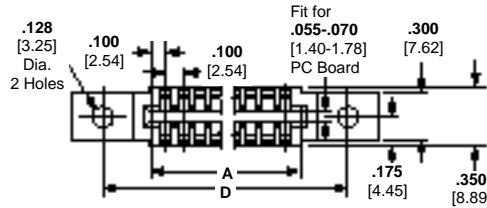
(pages 186, 187):

Product Specification 108-9031

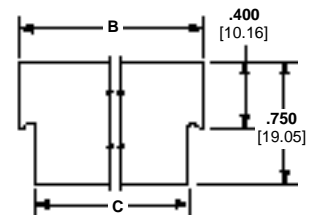
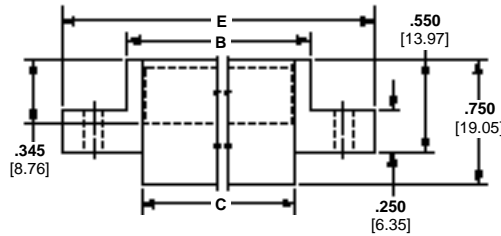
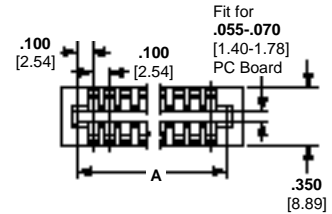
Application Specification 114-9004

Instruction Sheet 408-7527

With Mounting Ears



Without Mounting Ears



| No. of Dual Positions | Dimensions | | | | | Part Numbers | |
|-----------------------|------------|--------|--------|--------|--------|-----------------------|--------------------|
| | A | B | C | D | E | Without Mounting Ears | With Mounting Ears |
| 6 | .700 | .900 | .720 | — | — | 2-583717-1 | — |
| | 17.78 | 22.86 | 18.29 | 1.175 | 1.430 | — | 583861-5 |
| 7 | .800 | 1.000 | .820 | — | — | 2-583717-3 | — |
| | 20.32 | 25.4 | 20.83 | — | — | — | — |
| 8 | .900 | 1.100 | .920 | — | — | 3-583717-9 | — |
| | 22.86 | 27.94 | 23.36 | — | — | — | — |
| 10 | 1.100 | 1.300 | 1.120 | 1.700 | 2.100 | 583717-1 | 583718-1 |
| | 27.94 | 33.02 | 28.49 | 43.18 | 53.34 | — | 583861-7 |
| 13 | 1.200 | 1.400 | 1.600 | — | — | 3-583717-3 | — |
| | 30.48 | 35.56 | 40.64 | — | — | — | — |
| 14 | 1.500 | 1.700 | 1.520 | — | — | 2-583717-7 | — |
| | 38.1 | 43.16 | 38.61 | — | — | — | — |
| 15 | 1.600 | 1.800 | 1.620 | 2.200 | 2.600 | 583717-3 | 583718-3 |
| | 40.64 | 45.72 | 41.15 | 55.88 | 66.04 | — | 583861-9 |
| 17 | 1.800 | 2.000 | 1.820 | 2.400 | 2.800 | 583717-5 | 1-583861-1 |
| | 45.72 | 50.8 | 46.30 | 60.96 | 71.12 | — | — |
| 18 | 1.900 | 2.100 | 1.920 | — | — | 583717-7 | — |
| | 48.26 | 53.34 | 48.76 | — | — | — | — |
| 20 | 2.100 | 2.300 | 2.120 | — | — | 3-583717-1 | — |
| | 53.34 | 58.42 | 53.84 | — | — | — | — |
| 22 | 2.300 | 2.500 | 2.320 | 2.900 | 3.300 | 583717-9 | 583718-9 |
| | 58.42 | 63.50 | 58.93 | 73.66 | 83.82 | — | — |
| 25 | 2.600 | 2.800 | 2.620 | 3.200 | 3.600 | 1-583717-1 | 1-583718-1 |
| | 66.04 | 71.12 | 66.55 | 81.28 | 91.44 | — | — |
| 30 | 3.100 | 3.300 | 3.120 | 3.700 | 4.100 | 1-583717-3 | 1-583718-3 |
| | 78.74 | 83.82 | 79.25 | 93.98 | 104.14 | — | 583861-1 |
| 32 | 3.300 | 3.500 | 3.320 | 3.900 | 4.300 | — | 2-583718-7 |
| | 83.82 | 88.90 | 84.33 | 99.06 | 109.22 | — | — |
| 36 | 3.700 | 3.900 | 3.720 | 4.175 | 4.430 | — | 2-583861-5 |
| | 93.98 | 93.06 | 94.49 | 106.04 | 112.52 | — | — |
| 40 | 4.100 | 4.300 | 4.120 | 4.700 | 5.100 | — | 1-583718-5 |
| | 104.14 | 109.22 | 104.65 | 119.38 | 129.54 | — | 583861-3 |
| 50 | 5.100 | 5.300 | 5.120 | 5.700 | 6.100 | 1-583717-9 | 1-583718-7 |
| | 129.54 | 134.62 | 130.05 | 144.78 | 154.94 | — | 2-583861-1 |

Note: Other connector sizes can be made available, consult Tyco Electronics.

Crimp Snap Twin Leaf Connectors, .100 [2.54] Centerline (Continued)

Housings Preloaded with Right-Angle Posts

Material and Finish:

Housing—Black glass-filled polyester, 94V-0 rated

Contacts—Phosphor bronze, plated .000015 [0.00038] gold in mating area, with entire contact underplated .000030 [0.00076] nickel

Posts—Phosphor bronze, tin plated

Related Product Data:

Performance Specifications—page 154

Accessories—page 162*

PCB Edge Pattern and Hole Layout—page 163

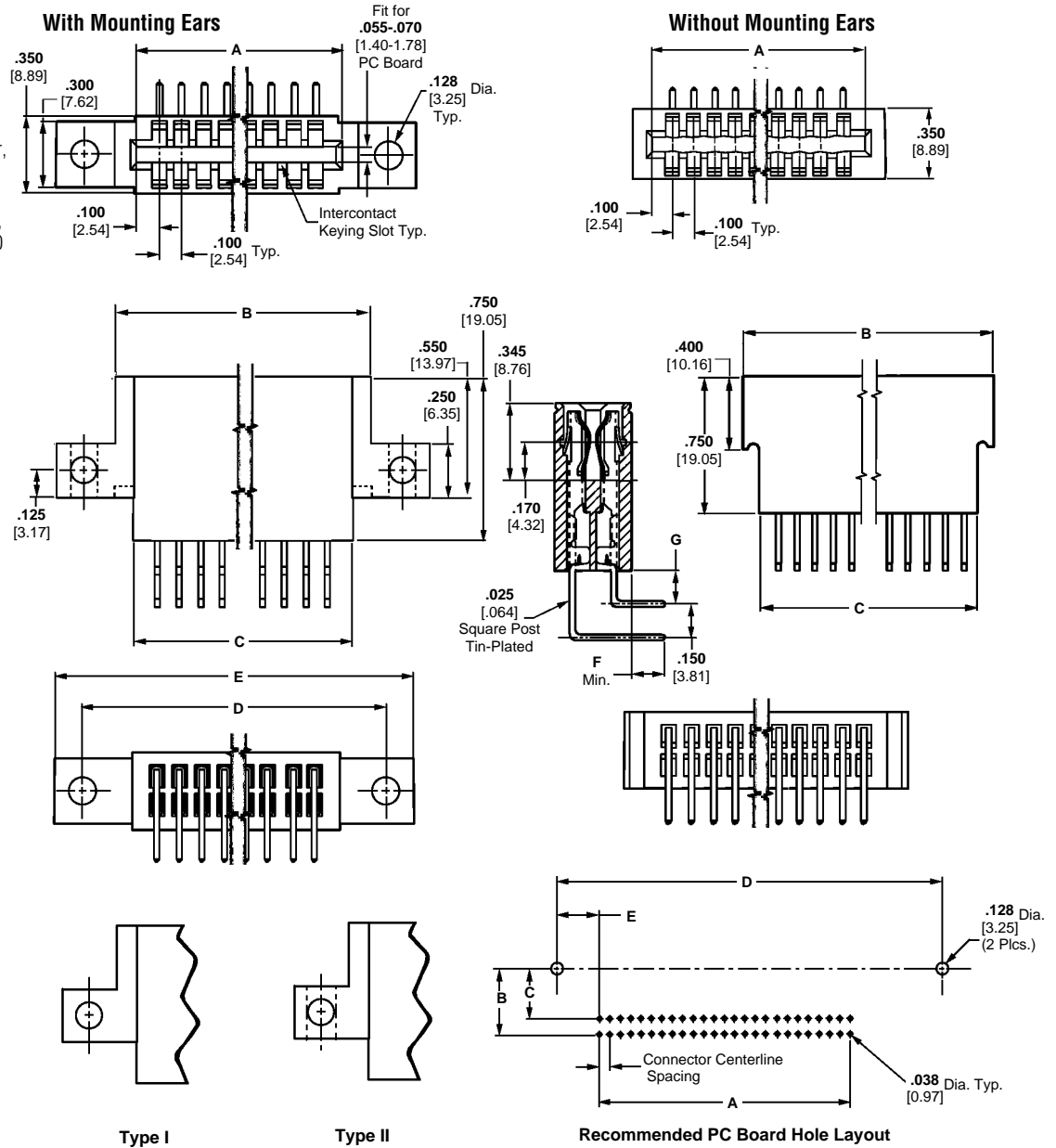
Technical Documents:

(pages 186, 187):

Product Specification 108-9031

Application Specification 114-9004

Instruction Sheet 408-7527



| No. of Dual Pos. | Dimensions | | | | | | | Posted Assembly Part Numbers | | |
|------------------|-----------------|-----------------|-----------------|-----------------|-----------------|--------------|--------------|-------------------------------------|--|----------|
| | A | B | C | D | E | F | G | Right-Angle Post With Mounting Ears | Right-Angle Post Without Mounting Ears | |
| | Type I | Type II | | | | | | | | |
| 10 | 1.100 27.94 | 1.300 33.02 | 1.120 28.49 | 1.575 40.01 | 1.830 46.48 | — | — | — | 583900-5 | — |
| 17 | 1.800 45.72 | 2.000 50.80 | 1.820 46.23 | — | — | .090 2.29 | .150 3.81 | — | — | 530218-5 |
| 22 | 2.300 58.42 | 2.500 63.50 | 2.320 58.93 | 2.900 73.66 | 3.300 83.82 | .090 2.29 | .150 3.81 | — | 1-583900-3 | 530218-9 |
| 25 | 2.600 66.04 | 2.800 71.12 | 2.620 66.55 | 3.200 81.28 | 3.600 91.44 | .090 2.29 | .150 3.81 | 583900-1 | — | 530218-1 |
| 28 | 2.900 73.66 | 3.100 78.74 | 2.920 74.16 | 3.375 85.72 | 3.630 92.20 | .090 2.29 | .150 3.81 | — | 583900-6 | — |
| 30 | 3.100 78.74 | 3.200 81.28 | 3.120 79.25 | 3.700 93.98 | 4.100 104.14 | .090 2.29 | .150 3.81 | — | 583900-4 | 530218-6 |
| 50 | 5.100 129.54 | 5.300 134.62 | 5.120 130.05 | 5.575 141.61 | 5.830 148.08 | — | — | 583900-3 | — | — |

Note: Other connector sizes can be made available, consult Tyco Electronics.

Crimp Snap Twin Leaf Connectors, .125 [3.18] Centerline

Housings

Material: Black glass-filled polyester
94V-0 rated

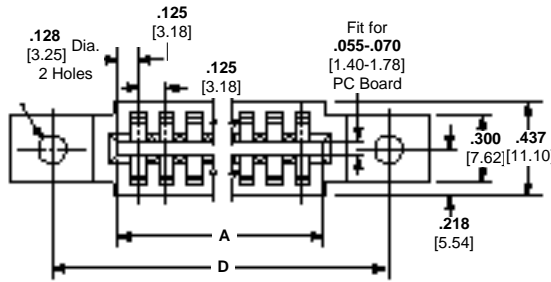
Related Product Data:

- Performance Specifications**—page 154
- Contacts**—pages 155, 156
- Accessories**—page 162
- PCB Edge Pattern**—page 163

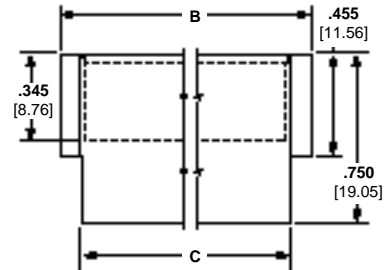
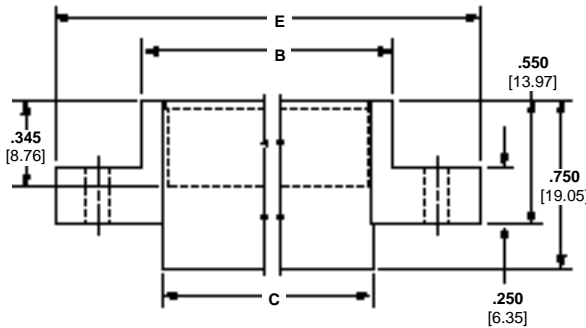
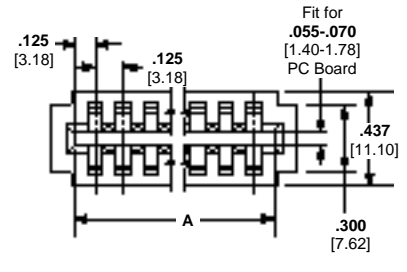
Technical Documents:

- (pages 186, 187):
- Product Specification 108-9031
- Application Specification 114-9004
- Instruction Sheet 408-7527

With Mounting Ears



Without Mounting Ears



| No. of Dual Positions | Dimensions | | | | | Part Numbers | |
|-----------------------|-----------------|-----------------|-----------------|-----------------|-----------------|-----------------------|--------------------|
| | A | B | C | D | E | Without Mounting Ears | With Mounting Ears |
| 6 | .875 22.23 | 1.035 26.29 | .845 21.46 | 1.295 32.89 | 1.555 39.50 | 583873-1 | 583864-1 |
| 10 | 1.375 34.93 | 1.535 38.99 | 1.345 34.16 | 1.795 45.59 | 2.055 52.20 | — | 583864-3 |
| 15 | 2.000 50.80 | 2.160 54.86 | 1.970 50.04 | 2.420 61.47 | 2.680 68.07 | 583873-5 | — |
| 22 | 2.875 73.03 | 3.035 77.09 | 2.845 72.26 | 3.295 83.69 | 3.555 90.30 | 583873-9 | 583864-9 |
| 25 | 3.250 82.55 | 3.410 86.61 | 3.220 81.79 | 3.670 93.22 | 3.930 99.82 | — | — |
| 28 | 3.625 92.08 | 3.785 96.14 | 3.595 91.31 | 4.045 102.74 | 4.305 109.35 | — | 1-583864-3 |
| 30 | 3.875 98.43 | 4.035 102.49 | 3.845 97.66 | 4.295 109.09 | 4.555 115.70 | — | 2-583864-1 |
| 40 | 5.125 130.17 | 5.285 134.23 | 5.095 129.41 | 5.545 140.84 | 5.805 147.44 | — | 1-583864-7 |
| 44 | 5.625 142.88 | 5.785 146.94 | 5.595 142.11 | 6.045 153.54 | 6.305 160.15 | 1-583873-9 | — |

Note: Other connector sizes can be made available, consult Tyco Electronics.

Crimp Snap Twin Leaf Connectors, .125 [3.18] Centerline (Continued)

Housings Preloaded with Right-Angle Posts

Material and Finish:

Housing—Black glass-filled polyester, 94V-0 rated

Contacts—Phosphor bronze, plated .000030 [0.00076] gold in mating area, with entire contact underplated .000030 [0.00076] nickel

Posts—Phosphor bronze, tin-plated

Related Product Data:

Performance Specifications—page 154

Accessories—page 162

PCB Edge Pattern and Hole Layout—page 163

Technical Documents:

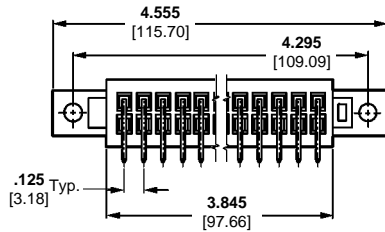
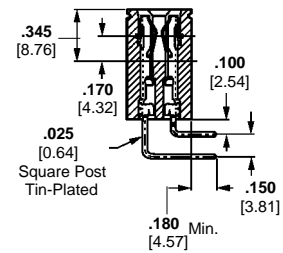
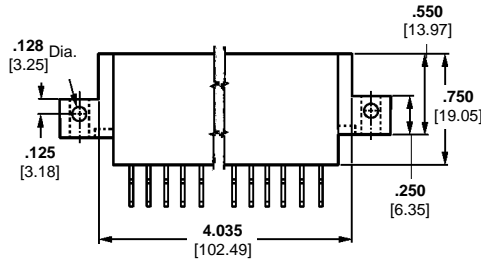
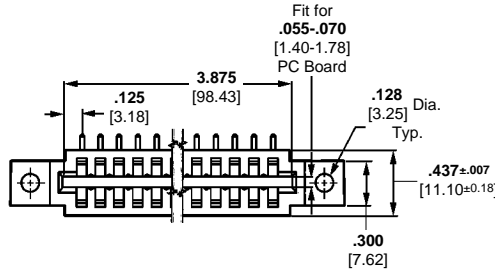
(pages 186, 187):

Product Specification 108-9031

Application Specification 114-9004

Instruction Sheet 408-7527

With Mounting Ears



**30 Dual Positions,
Part No. 530238-8**

Crimp Snap Twin Leaf Connectors, .156 [3.96] Centerline

Housings

With Mounting Ears

Material: Black glass-filled polyester, 94V-0 rated

Related Product Data:

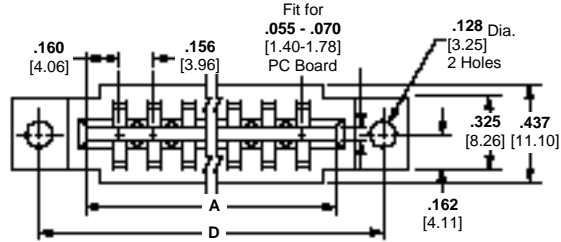
Performance Specifications—

page 154

Contacts—pages 155, 156

Accessories—page 162

PCB Edge Pattern—page 163



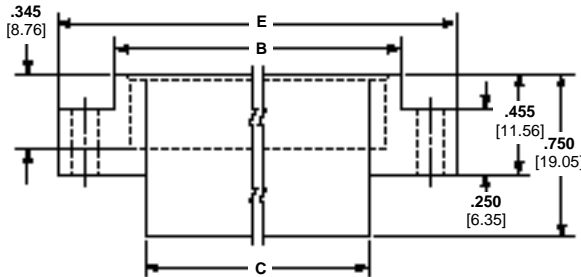
Technical Documents:

(pages 186, 187):

Product Specification
108-9031

Application Specification
114-9004

Instruction Sheet 408-7527



| No. of Dual Positions | Dimensions | | | | | Part Numbers Mounting Ears |
|-----------------------|-----------------|-----------------|-----------------|-----------------|-----------------|-------------------------------|
| | A | B | C | D | E | |
| 6 | 1.100 27.94 | 1.264 32.11 | .976 24.79 | 1.535 38.99 | 1.785 45.34 | 1-583859-3 |
| 8 | 1.412 35.86 | 1.576 40.03 | 1.288 32.72 | 1.847 46.91 | 2.097 53.26 | 2-583859-1 |
| 10 | 1.724 43.79 | 1.888 47.96 | 1.600 40.64 | 2.159 54.84 | 2.409 61.19 | 583859-9 |
| 12 | 2.036 51.71 | 2.200 55.88 | 1.912 48.56 | 2.471 62.76 | 2.721 69.11 | 1-583859-5 |
| 15 | 2.504 63.60 | 2.668 67.77 | 2.380 60.45 | 2.939 74.65 | 3.189 81.00 | 583859-7 |
| 18 | 2.972 75.49 | 3.136 79.55 | 2.848 72.34 | 3.407 86.54 | 3.657 92.89 | 583859-5 |
| 22 | 3.596 91.34 | 3.760 95.50 | 3.472 88.19 | 4.031 102.39 | 4.281 108.74 | 583859-3 |
| 28 | 4.532 115.11 | 4.696 119.28 | 4.408 111.96 | 4.967 126.16 | 5.217 132.51 | 583859-1 |
| 36 | 5.780 146.81 | 5.944 150.96 | 5.656 143.66 | 6.215 157.86 | 6.465 164.21 | 2-583859-3 |

Note: Other connector sizes can be made available, consult Tyco Electronics.

Accessories for Crimp Snap Twin Leaf Connectors

Dummy Contacts

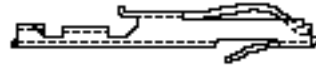
Material: Phosphor bronze

Related Product Data:

The dummy contact is used in sparsely loaded housings to balance contact pressure. For specific recommendations, consult Tyco Electronics.

Technical Documents

(pages 186, 187):
Instruction Sheet 408-7527



Tin Plated — **Part No. 583857-5**
.000030 [0.00076] Nickel Plated — **Part No. 583857-6**
Gold Flash-Over-Nickel Plate — **Part No. 583857-7**

Retaining Spring

Material: Stainless steel

Related Product Data:

Retaining springs are used for single sided PC board applications. Use one spring per 6 empty cavities.

Technical Documents

(pages 186, 187):
Instruction Sheet 408-7527

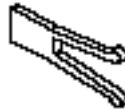


Unplated — **Part No. 583691-2**
Gold Flash-Over-Nickel Plate — **Part No. 583691-3**

Keying Plugs

Technical Documents

(pages 186, 187):
Instruction Sheet 408-7527

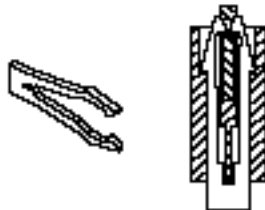


On-Contact Plug
Natural Nylon — **Part No. 583764-1**

Intercontact Plug
Natural Nylon — **Part No. 583274-1**
Glass-Filled Polyester — **Part No. 583274-3**

Locking Key

Material: Nylon



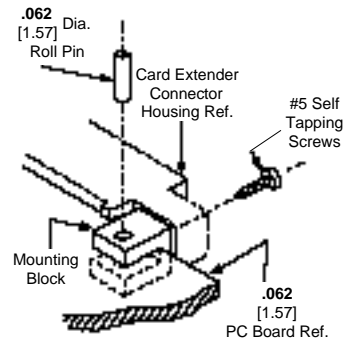
On-Contact Clip
Part No. 530213-1

Mounting Block

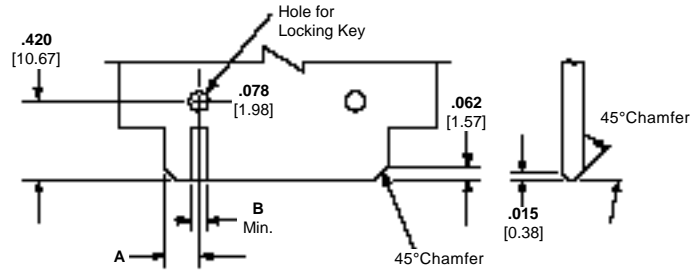
Material: Natural color nylon

Kit Part No. 531250-4

Each kit includes 2 mounting blocks
2 self tapping screws,
#5 x .437 [11.10]
2 roll pins
.075 x .250 [1.57 x 6.35]

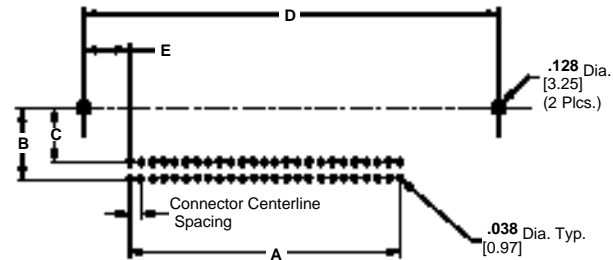


**Recommended PC Board
Edge Pattern**



| Connector Centerline Spacing | Dimensions | |
|------------------------------|-------------|-------------|
| | A | B |
| .100 | .093 | .052 |
| 2.54 | 2.36 | 1.32 |
| .125 | .118 | .078 |
| 3.18 | 3.00 | 1.98 |
| .156 | .153 | .094 |
| 3.96 | 3.89 | 2.39 |

**Recommended PC Board
Hole Layout**



Connector Centerline Spacing: .100 [2.54]

| No. of Dual Positions | Dimensions | | | | |
|-----------------------|------------------------|----------------------|----------------------|------------------------|----------------------|
| | A | B | C | D | E |
| 10 | .900 22.86 | .625 15.88 | .475 12.07 | 1.575 40.01 | .400 10.16 |
| 17 | 1.600 40.64 | — | — | — | — |
| 20 | 1.900 48.26 | .625 15.88 | .375 9.53 | 2.575 65.41 | .337 8.56 |
| 22 | 2.100 53.34 | .625 15.88 | 4.75 12.07 | 2.900 73.66 | .337 8.56 |
| 25 | 2.400 60.96 | .625 15.88 | .475 12.07 | 3.200 81.28 | .400 10.16 |
| 30 | 2.900 73.66 | — | — | 3.700 93.98 | .400 10.16 |
| 50 | 4.900 124.46 | .525 13.34 | .375 9.53 | 5.575 141.61 | .337 8.56 |

Connector Centerline Spacing: .125 [3.18]

| No. of Dual Positions | Dimensions | | | | |
|-----------------------|-----------------------|---|---|------------------------|---------------------|
| | A | B | C | D | E |
| 30 | 3.625 92.08 | — | — | 4.295 109.09 | .350 8.89 |

AMP-LEAF Connectors

Product Facts

- Contacts on .156 [3.96] centers
- Glass-filled polyester, phenolic or diallyl phthalate housings
- Closed card entry design helps prevent over stressing of contacts
- Gold-over-nickel plated contacts
- Locking lance permits easy contact replacement
- Keying
- Contacts maintain exact pressures on the circuit paths, despite repeated insertions and extractions
- Recognized under the Component Program of Underwriters Laboratories Inc. File No. E28476 
- Certified by Canadian Standards Association**, File No. LR 7189 

**CSA certification pending for certain products, as noted.

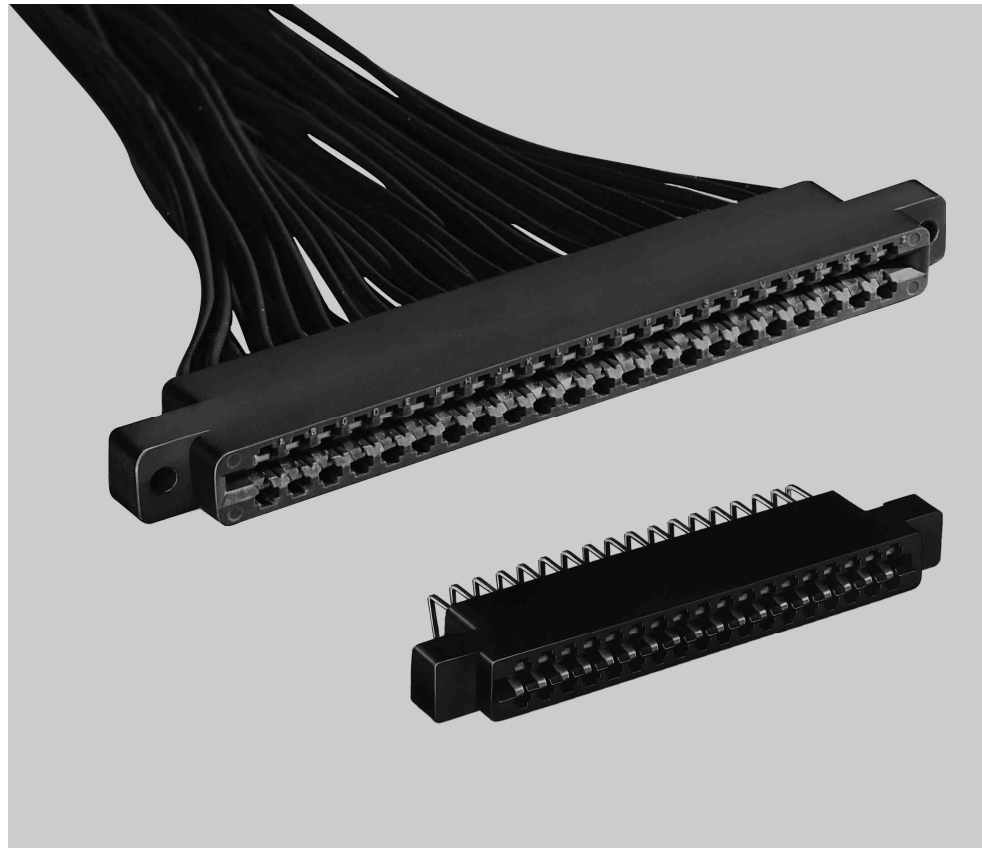
Performance Specifications

- Contact Current Rating*:**
5.0 amperes, max.
- Contact Engaging Force:**
16 oz. [4.4 N], max.
- Contact Separation Force:**
2 oz. [0.6 N], min.
- Vibration:**
MIL-STD-202, Method 201
- Operating Temperature:**
Contacts -40°C to +85°C
- Storage Temperature:**
-40°C to +85°C

Housings:

- Glass-Filled Polyester, -55°C to +105°C
- Glass-Filled Phenolic, -65°C to +125°C
- Diallyl Phthalate, -65°C to +125°C

*Consult Tyco Electronics engineering when paralleling contacts for power applications.



AMP-LEAF Connectors are available with crimp, snap-in contacts or preloaded with right-angle posted contacts. The crimp type printed circuit connector is supplied with the housing unloaded—the user buys only enough contacts to satisfy circuit requirements. This feature, when coupled with the Tyco Electronics matched tooling, contributes substantially to lower installed costs.

Right-angle posted connectors are supplied in various sizes, with preloaded contacts on one or both sides. The solder-type posts are formed 90° from the housing to permit right-angle interfacing between mother and daughter boards.

AMP-LEAF Connectors (Continued)

Crimp, Snap-In Contacts

Material and Finish:

Phosphor bronze, plated as follows:
Plating A—.000100-.000200 [0.00254-0.00508] tin (lubricant must be used)

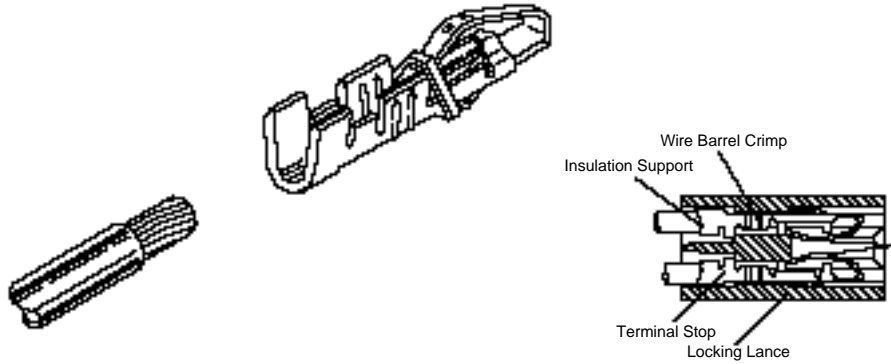
Plating B—.000030 [0.00076] min. gold in mating area, gold flash on remainder of contact, with entire contact underplated .000050 [0.00127] min. nickel

Plating C—.000015 [0.00038] min. gold in mating area, gold flash on remainder of contact, with entire contact underplated .000050 [0.00127] min. nickel

Plating D—.000030 [0.00076] min. gold over .000050 [0.00127] min. nickel in mating area, remainder of contact gold flash over .000015 [0.00038] min. nickel

Plating E—.000030 [0.00076] min. gold in mating area, with entire contact underplated .000050 [0.00127] min. nickel

Plating F—.000015 [0.00038] min. gold in mating area, with entire contact underplated .000050 [0.00127] min. nickel



| Wire Range AWG/mm ² | Insulation Range | | Contact Part Numbers | | Contact Finish | Applicator for AMP-O-LECTRIC Machine* | Hand Tool |
|-----------------------------------|------------------------|------------------------|----------------------|------------|----------------|---------------------------------------|--|
| | Single Wire | Double Wire | Loose Piece | Strip Form | | | |
| 26-22 0.12-0.4 | .050-.064 1.27-1.63 | — | 583990-3 | 583204-2 | B | 466366-2 | 90028-3 |
| | | | — | 343371-1 | D | | |
| | | | — | 583361-2 | A | | |
| 22-18 0.3-0.9 | .055-.080 1.40-2.03 | .120 3.05 Max. | 583989-3 | 583361-3 | B | 466367-2 | 90017-3 (1 #22-20) 90028-3 (2 #22) 90101-3 (1 #20) |
| | | | 583989-4 | 583361-4 | C | | |
| | | | — | 583555-4 | E | | |
| | | | — | 583555-6 | F | | |
| | | | — | — | — | | |
| 16 1.25-1.40 | .108 2.74 Max. | .080-.160 2.03-4.06 | 583991-3 | 60151-6 | B | 466368-2 | 90031-8 (2 #18) 90101-3 (2 #20) 90101-3 (1 #16) |

*Applicators are for AMP-O-LECTRIC Model "K" machines. Consult Tyco Electronics for applicators for other bench machines and lead-making machines.

- Notes:** 1. Shorting contacts are available, consult Tyco Electronics.
2. Contacts and housings to accommodate .093 [2.36] thick PC boards can be made available, consult Tyco Electronics.

Related Product Data:

Performance Specifications—
page 164

Connector Housings—
pages 167-169

Application Tooling—
pages 184, 185

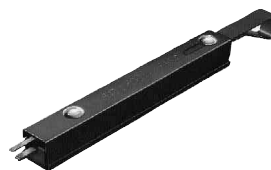
Technical Documents:

- (pages 186, 187):
Product Specifications
108-9013, 108-9043
Application Specification
114-9003
Instruction Sheets
408-6591, 408-7045, 408-7622,
408-7623, 408-7624, 408-7625,
408-7626
Crimp Inspection Sheet
CI 8050-33

Hand Crimping Tool



Contact Extraction Tool



| Extraction Tool Number | Used with Housings |
|------------------------|--------------------|
| 465195-1 | 480110-2, -5 |
| | 480142-2, -3 |
| | 582140-5 |
| | 582147-5 |
| | 582264-2 |
| | 582500-2 |
| | 582963-2 |
| | 583167-3 |
| | 583280-1 |
| | 583617-1 |
| | 583680-1 |
| | 583685-1 |
| | 583722-1 |
| | 583723-1 |
| | 583724-1 |
| 583725-1 | |
| 583726-1 | |
| 465195-2 | 480133-2 |

Dummy Contact

Material:

Phosphor bronze



- Plain Finish—
Part No. 66084-1
Tin Finish—
Part No. 66084-2
Gold Finish—
Part No. 66084-3

Technical Documents:

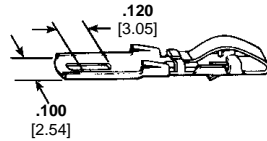
- (pages 186, 187):
Instruction Sheet 408-7037

AMP-LEAF Connectors (Continued)

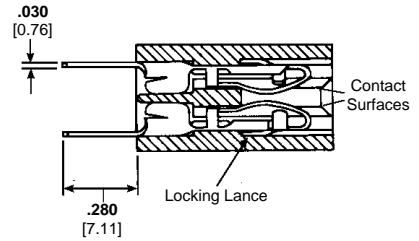
Solder Eyelet Contact

Material and Finish:

Phosphor bronze, plated .000015 [0.00038] min. gold in contact area, gold flash on remainder of contact, with entire contact underplated .000050 [0.00127] min. nickel



Standard Eyelet Type Contact
Part No. 66067-5
(For .055-.070 [1.4-1.78]
Thick PC Boards)

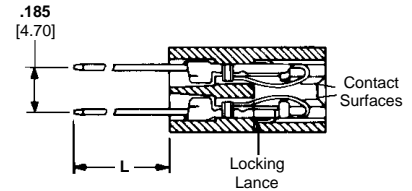


Note: Solder tab will accommodate a maximum of two 16 AWG [1.25-1.4 mm²] solid wires, or two 18 AWG [0.8-0.9 mm²] stranded wires.

Post Type Contacts

Material and Finish:

Phosphor bronze, plated .000015 [0.00038] min. gold in contact area, tin on post, with entire contact underplated .000050 [0.00127] min. nickel



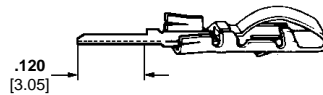
| Post Length L | Loose Piece Contact Part No. (.045 x .045 [1.14 x 1.14] Post) |
|------------------|--|
| .960 24.38 | 1-582355-3 |
| .560 14.22 | 1-582355-5 |

Note: Post type contacts are for .055-.070 [1.4-1.78] thick PC boards.

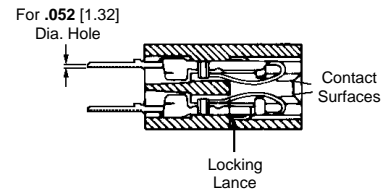
Solder Dip Contacts

Material and Finish:

Phosphor bronze, plated .000015 [0.00038] min. gold in contact area or, plated .000030 [0.00076] min. gold in contact area, tin on post, with entire contact underplated .000050 [0.00127] min. nickel



Solder Dip Contact
Part No. 583294-2 (.000015)
Part No. 583294-1 (.000030)
(For .062 [1.57]
Thick PC Board)



AMP-LEAF Connectors, .156 [3.96] Centerline

Glass-Filled Polyester Housings

Material: Glass-filled polyester

Related Product Data:

Card Guide Assembly—page 171

PC Board Thickness—.055-.070 [1.40-1.78]

Performance Specifications—page 164

Contacts—pages 165, 166

Accessories—page 171

PC Board Layout—page 172

Technical Documents:

(pages 186, 187):

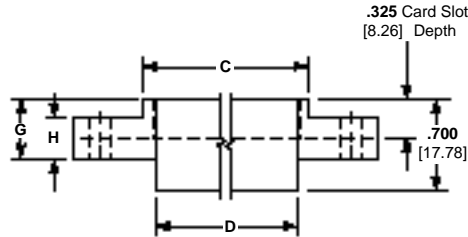
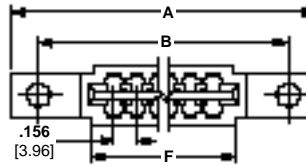
Product Specifications

108-9013, 108-9043

Application Specification

114-9003

Instruction Sheet 408-7037



| No. of Dual Positions | Dimensions | | | | | | | | | | Housing Part Numbers |
|-----------------------|-----------------|-----------------|-----------------|-----------------|--------------|-----------------|---------------|--------------|--------------|---------------|----------------------|
| | A | B | C | D | E | F | G | H | J | K | |
| 6 | 1.785 45.34 | 1.535 38.99 | 1.264 32.11 | .976 24.79 | .125 3.18 | 1.100 27.94 | .456 11.58 | .250 6.35 | .300 7.62 | .350 8.89 | 583722-1 |
| 10 | 2.409 61.19 | 2.159 54.84 | 1.888 47.96 | 1.600 40.64 | .125 3.18 | 1.724 43.79 | .456 11.58 | .250 6.35 | .300 7.62 | .350 8.89 | 583723-1 |
| 12 | 2.721 69.11 | 2.471 62.76 | 2.200 55.88 | 1.912 48.56 | .125 3.18 | 2.036 51.71 | .456 11.58 | .250 6.35 | .300 7.62 | .350 8.89 | 583724-1* |
| 15 | 3.189 81.00 | 2.939 74.65 | 2.668 67.77 | 2.380 60.45 | .128 3.25 | 2.504 63.60 | .456 11.58 | .250 6.35 | .300 7.62 | .350 8.89 | 583680-1 |
| 18 | 3.657 92.89 | 3.407 86.54 | 3.136 79.65 | 2.848 72.34 | .125 3.18 | 2.972 75.49 | .456 11.58 | .250 6.35 | .300 7.62 | .350 8.89 | 583725-1 |
| 18 | 3.657 92.89 | 3.407 86.54 | 3.136 79.65 | 2.848 72.34 | .156 3.96 | 2.972 75.49 | .456 11.58 | .250 6.35 | .300 7.62 | .350 8.89 | 583725-3 |
| 22 | 4.281 108.74 | 4.031 102.39 | 3.760 95.50 | 3.472 88.19 | .125 3.18 | 3.596 91.34 | .456 11.58 | .250 6.35 | .300 7.62 | .350 8.89 | 583617-1 |
| 22 | 4.281 108.74 | 4.031 102.39 | 3.760 95.50 | 3.472 88.19 | .156 3.96 | 3.596 91.34 | .456 11.58 | .250 6.35 | .300 7.62 | .350 8.89 | 583617-3 |
| 25 | 4.749 120.62 | 4.499 114.27 | 4.228 107.39 | 3.940 100.01 | .125 3.18 | 4.064 103.23 | .456 11.58 | .250 6.35 | .300 7.62 | .350 8.89 | 583726-1 |
| 30 | 5.529 140.44 | 5.279 134.09 | 5.008 127.20 | 4.720 119.89 | .125 3.18 | 4.844 123.04 | .456 11.58 | .250 6.35 | .300 7.62 | .350 8.89 | 583685-1 |
| 36 | 7.015 178.18 | 6.578 167.08 | 5.942 150.92 | 5.722 145.33 | .156 3.96 | 5.782 146.86 | .455 11.55 | .290 7.36 | .325 8.25 | .437 11.10 | 583552-1 |

*CSA certification pending.

Note: Other connector sizes can be made available, consult Tyco Electronics.

Glass-Filled Phenolic Housings

Material: Glass-filled phenolic per MIL-M-14F

Related Product Data:

Card Guide Assembly—page 171

Performance Specifications—page 164

Contacts—pages 165, 166

Accessories—page 171

PC Board Layout—page 172

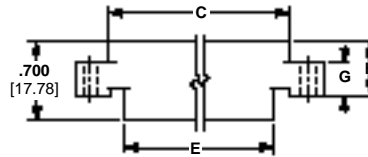
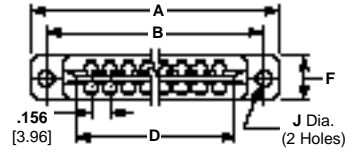
Technical Documents:

(pages 186, 187):

Product Specifications
108-9013, 108-9043

Application Specification
114-9003

Instruction Sheet 408-7037



| No. of Dual Positions | Dimensions | | | | | | | | | | Board Thickness | Housing Part Numbers |
|-----------------------|------------|--------|--------|--------|--------|-------|------|-------|------|-----------|-----------------------|----------------------|
| | A | B | C | D | E | F | G | H | J | | | |
| 8 | 1.982 | 1.767 | 1.550 | 1.410 | 1.288 | .340 | .250 | .458 | .125 | .055-.070 | 582140-5 | |
| | 50.34 | 44.88 | 39.37 | 35.81 | 32.72 | 8.64 | 6.35 | 11.63 | 3.18 | 1.40-1.78 | | |
| 10 | 2.407 | 2.157 | 1.866 | 1.722 | 1.598 | .360 | .250 | .456 | .128 | .055-.070 | 582963-2* | |
| | 61.14 | 54.79 | 47.90 | 43.74 | 40.59 | 9.14 | 6.35 | 11.58 | 3.25 | 1.40-1.78 | | |
| 10 | — | — | 1.886 | 1.722 | 1.598 | .360 | — | — | — | .055-.070 | 583280-1 ¹ | |
| | | | 47.90 | 43.74 | 40.59 | 9.14 | | | | 1.40-1.78 | | |
| 15 | 3.182 | 2.854 | 2.621 | 2.506 | 2.376 | .350 | .250 | .466 | .187 | .055-.070 | 480110-5 | |
| | 80.82 | 72.49 | 66.57 | 63.65 | 60.35 | 8.89 | 6.35 | 11.84 | 4.75 | 1.40-1.78 | | |
| 15 | 3.182 | 2.854 | 2.621 | 2.506 | 2.376 | .350 | .250 | .466 | .125 | .055-.070 | 1-582147-5* | |
| | 80.82 | 72.49 | 66.57 | 63.65 | 60.35 | 8.89 | 6.35 | 11.84 | 3.18 | 1.40-1.78 | | |
| 15 | 3.182 | 2.933 | 2.621 | 2.506 | 2.376 | .350 | .250 | .466 | .128 | .055-.070 | 582500-5 | |
| | 80.82 | 74.49 | 66.57 | 63.65 | 60.35 | 8.89 | 6.35 | 11.84 | 3.25 | 1.40-1.78 | | |
| 18 | 3.650 | 3.400 | 3.088 | 2.948 | 2.843 | .375 | .155 | .406 | .156 | .055-.070 | 480133-5 | |
| | 92.71 | 86.36 | 78.43 | 74.87 | 72.21 | 9.52 | 3.93 | 10.31 | 3.96 | 1.40-1.78 | | |
| 22 | 4.274 | 4.025 | 3.754 | 3.591 | 3.466 | .350 | .250 | .456 | .125 | .055-.070 | 480142-3 | |
| | 108.56 | 102.24 | 95.35 | 91.21 | 88.04 | 8.89 | 6.35 | 11.58 | 3.18 | 1.40-1.78 | | |
| 25 | 4.741 | 4.493 | 4.221 | 4.058 | 3.933 | .350 | .250 | .456 | .125 | .055-.070 | 583167-3* | |
| | 120.42 | 114.12 | 107.21 | 103.07 | 99.90 | 8.89 | 6.35 | 11.58 | 3.18 | 1.40-1.78 | | |
| 32 | 6.365 | 5.928 | 5.292 | 5.132 | 5.072 | .485 | .290 | .455 | .187 | .084-.104 | 582264-2,3 | |
| | 161.67 | 150.57 | 134.42 | 130.35 | 128.83 | 12.32 | 7.37 | 11.56 | 4.75 | 2.13-2.64 | | |

*CSA certification pending.

¹Housing without mounting ears.

²Housing does not accommodate intercontact keying plug.

³For .086 to .104 [2.18 to 2.64] thick PC boards (special contacts required).

Note: Other connector sizes can be made available, consult Tyco Electronics.

Diallyl Phthalate Housings

Material: Diallyl phthalate per MIL-M-14F

Related Product Data:

Card Guide Assembly—page 171

Performance Specifications—page 164

Contacts—pages 165, 166

Accessories—page 171

PC Board Layout—page 172

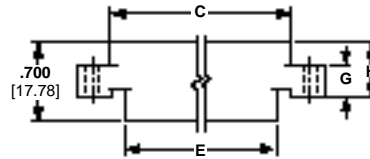
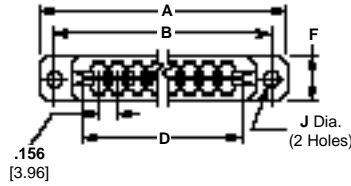
Technical Documents:

(pages 186, 187):

Product Specifications
108-9013, 108-9043

Application Specification
114-9003

Instruction Sheet 408-7037



Single Slot Housing

| No. of Dual Positions | Dimensions | | | | | | | | | Board Thickness | Housing Part Numbers |
|-----------------------|------------|--------|-------|-------|-------|------|------|-------|------|-----------------|----------------------|
| | A | B | C | D | E | F | G | H | J | | |
| 15 | 3.187 | 2.859 | 2.625 | 2.510 | 2.380 | .350 | .250 | .466 | .187 | .055-.070 | 480110-2 |
| | 80.95 | 72.62 | 66.68 | 63.75 | 60.45 | 8.89 | 6.35 | 11.84 | 4.15 | 1.40-1.78 | |
| 15 | 3.187 | 2.938 | 2.625 | 2.510 | 2.380 | .350 | .250 | .466 | .128 | .055-.070 | 582500-2 |
| | 80.95 | 74.63 | 66.68 | 63.75 | 60.45 | 8.89 | 6.35 | 11.84 | 3.25 | 1.40-1.78 | |
| 18 | 3.656 | 3.406 | 3.093 | 2.953 | 2.848 | .375 | .155 | .406 | .156 | .055-.070 | 480133-2 |
| | 92.86 | 86.51 | 78.56 | 75.01 | 72.34 | 9.53 | 3.94 | 10.31 | 3.96 | 1.40-1.78 | |
| 22 | 4.281 | 4.031 | 3.760 | 3.596 | 3.472 | .350 | .250 | .456 | .125 | .055-.070 | 480142-2 |
| | 108.74 | 102.39 | 95.90 | 91.34 | 88.19 | 8.89 | 6.35 | 11.58 | 3.18 | 1.40-1.78 | |

Note: Other connector sizes can be made available, consult Tyco Electronics.

AMP-LEAF Connectors, .156 [3.96] Centerline (Continued)

Housings Preloaded with Right-Angle Post Contacts

Material and Finish:

Housing—See chart below

Contacts—Phosphor bronze, plated .000015 [0.00038] min. gold in mating area, with entire contact underplated .000050 [0.00127] min. nickel

Post—Phosphor bronze, tin plated

Retaining Spring—Stainless steel

Related Product Data:

Card Guide Assembly—page 171

Performance Specifications—page 164

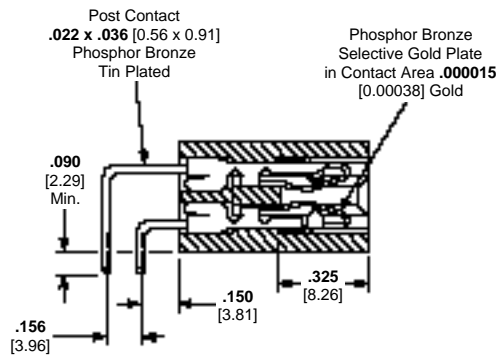
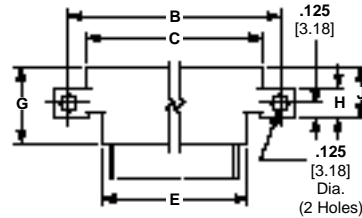
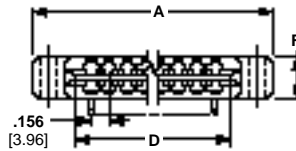
Accessories—page 171

PC Board Layout—page 172

Technical Documents:

(pages 186, 187):

Product Specification
108-9013



| No. of Dual Positions | Dimensions | | | | | | | | | Part Numbers | Housing Material |
|-----------------------|-----------------|-----------------|-----------------|-----------------|-----------------|--------------|---------------|--------------|---------------|--------------|------------------------|
| | A | B | C | D | E | F | G | H | J | | |
| 10 | 2.407 61.14 | 2.157 54.79 | 1.886 47.9 | 1.722 43.74 | 1.598 40.59 | .360 9.14 | .700 17.78 | .250 6.35 | .456 11.58 | 583599-1* | |
| 15 | 3.182 80.82 | 2.933 74.5 | 2.621 66.57 | 2.506 63.65 | 2.376 60.35 | .350 8.89 | .700 17.78 | .250 6.35 | .466 11.84 | 583545-1* | Glass-Filled Phenolic |
| 18 | 3.650 92.71 | 3.400 86.36 | 3.088 78.44 | 2.948 74.88 | 2.843 72.21 | .375 9.53 | .700 17.78 | .250 6.35 | .406 10.31 | 583544-1* | |
| | 3.657 92.89 | 3.457 86.54 | 3.136 79.65 | 2.972 75.49 | 2.848 72.34 | .350 8.89 | .700 17.78 | .250 6.35 | .456 11.58 | 530851-1 | Glass-Filled Polyester |
| 22 | 4.274 108.56 | 4.025 102.24 | 3.754 95.35 | 3.591 91.21 | 3.466 88.04 | .350 8.89 | .700 17.78 | .250 6.35 | .456 11.58 | 583458-2* | Glass-Filled Phenolic |
| | 4.281 108.74 | 4.031 102.39 | 3.760 95.50 | 3.596 91.34 | 3.472 88.19 | .350 8.89 | .700 17.78 | .250 6.35 | .456 11.58 | 583975-1* | Glass-Filled Polyester |
| 28 | 5.270 133.86 | 4.961 126.01 | 4.680 118.87 | 4.527 114.99 | 4.402 111.81 | .350 8.89 | .700 17.78 | .250 6.35 | .456 11.58 | 530061-1* | Glass-Filled Phenolic |

*CSA certification pending.

- Notes:** 1. Other connector sizes can be made available, consult Tyco Electronics.
2. Finished hole size is .048-.054 [1.22-1.37] diameter.

AMP-LEAF Connector Accessories

Keying Plugs

Material: Nylon

Technical Documents:

(pages 186, 187):
Instruction Sheets 408-7036,
408-7037, 408-7068, 408-7339

Commoning Springs

Material and Finish:

Beryllium copper, gold plated

Technical Documents:

(pages 186, 187):
Instruction Sheet 408-7419

Retaining Springs

Material: Stainless steel

Technical Documents:

(pages 186, 187):
Instruction Sheets 408-7035,
408-7037

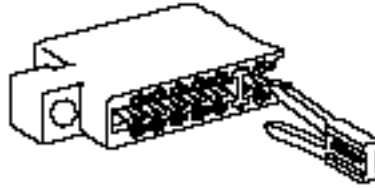
Card Guides

Material: Glass-filled nylon, black

Technical Documents:

(pages 186, 187):
Instruction Sheets 408-7557,
408-7565

On-Contact Keying Plug

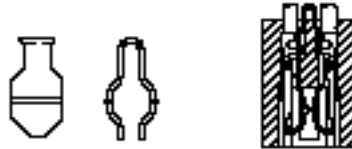


.055-.070 [1.4-1.78] Board Thickness—Part No. 480143-1

Intercontact Keying Plugs



.040 [1.02] Wide—Part No. 582501-1
.025 [0.64] Wide—Part No. 583274-1

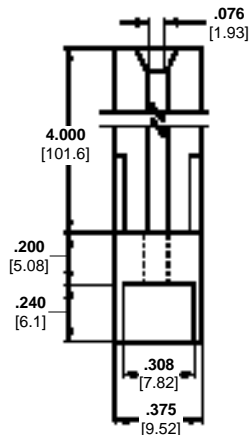
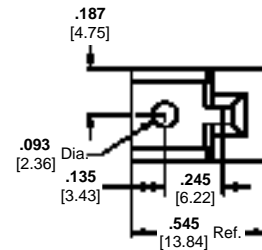


.055-.070 [1.4-1.78] thk. PC board—Part No. 66092-1

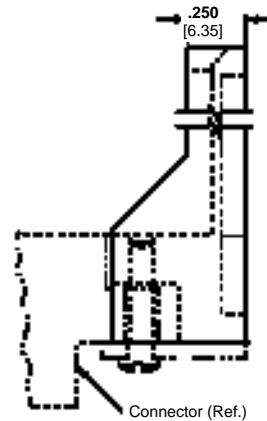
.055-.070 [1.4-1.78] and
.084-.104 [2.13-2.64] thk. PC board with locking latches—Part No. 583454-1



Nickel Finish—Part No. 42973-1
Plain Finish—Part No. 42973-2
Gold Finish—Part No. 42973-3



Card Guide Part Number 583760-1



Note: Card guides may be used with all connector housings having mounting ears.

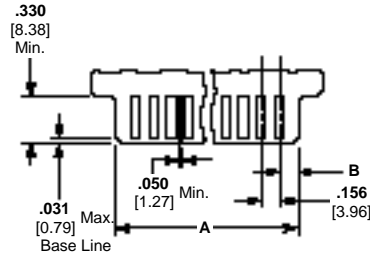
AMP-LEAF Connector PC Board Layouts

**Recommended
PC Board Layouts**

Technical Documents:

(pages 186, 187):

Instruction Sheet 408-7037



Note: Slot for intercontact keying may be located between any two pads (except the first two and last two pads).

| No. of Positions | Housing Material | Dimensions | |
|------------------|------------------|------------|------|
| | | A | B |
| 8 | P | 1.396 | .152 |
| | | 35.46 | 3.86 |
| 10 | P | 1.709 | .151 |
| | | 43.40 | 3.84 |
| 15 | DP | 2.491 | .153 |
| | P | 63.27 | 3.89 |
| 18 | DP | 2.487 | .152 |
| | | 63.17 | 3.86 |
| 22 | DP | 2.940 | .144 |
| | | 74.68 | 3.66 |
| 25 | P | 3.583 | .153 |
| | | 91.00 | 3.89 |
| 32 | P | 3.578 | .151 |
| | | 90.88 | 3.84 |
| 32 | P | 4.043 | .150 |
| | | 102.69 | 3.81 |
| 32 | P | 5.117 | .140 |
| | | 129.97 | 3.56 |

DP = Diallyl Phthalate

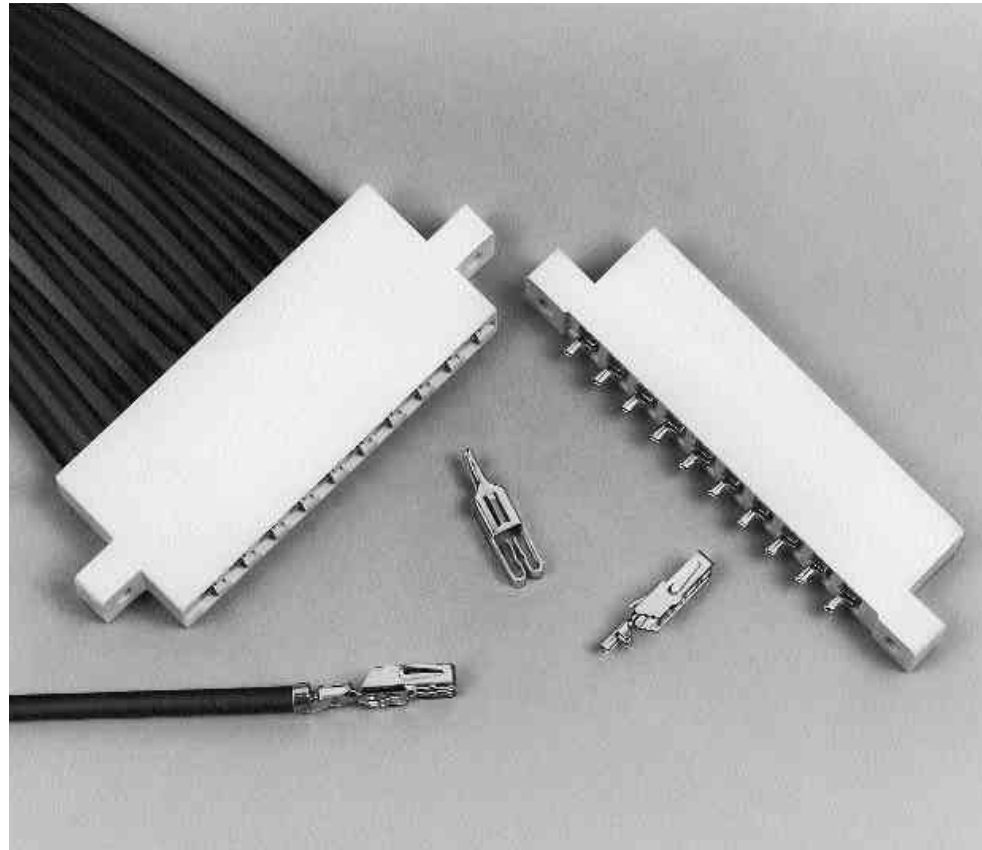
P = Phenolic

Note: Board thickness .055-.070 [1.4-1.78] all positions except 32 position-.084-.104 [2.13-2.64].

High Current Connectors

Product Facts

- High current capability up to 30 amperes*
- UL rated 94V-0 glass-filled thermoplastic housings
- Choice of wire-to-board and board-to-board (solder tail) connector configurations in 3, 4, 8, 9, 10 and 12 contact sizes
- Heavy duty contacts made of high conductivity copper alloy with tin-over-nickel plating
- Contacts on .312 [7.92] centers
- Large redundant areas of contact provide excellent electrical continuity
- Connectors available for mating with .062 [1.57], .093 [2.36] and .125 [3.18] thick double-sided PC boards
- Contacts furnished in strip form for automatic machine termination and loose form for hand tool application
- Recognized under the Component Program of Underwriters Laboratories Inc. File No. E28476
- Certified by Canadian Standards Association File No. LR 7189



AMP High Current Edge Connectors are an economical answer to the costly issue of interconnecting high current printed circuitry. Designed for a current capability of up to 30 amperes*, these connectors feature UL rated 94V-0, rugged glass-filled thermoplastic housings and high conductivity copper alloy contacts with bright tin-over-nickel plating. Contacts are on .312 [7.92] centers.

Connectors are available in 3, 4, 8, 9, 10 and 12 contact positions and in a choice of two styles for board-to-board and wire-to-board applications.

The board-to-board connectors are supplied preloaded with solder tail contacts and are designed to mate with .062 [1.57] thick double-sided daughter boards.

Wire-to-board housings are available with and without mounting ears and with capabilities of mating with .062 [1.57], .093 [2.36] and .125 [3.18] thick double-sided daughter boards. These housings are designed to accept crimp, snap-in contacts which can accommodate a wire size range of 16-10 AWG [1.25-6 mm²]. Contacts are furnished in strip form for automatic machine termination and in loose form for hand tool application.

While the basic contact is designed to carry 30 amperes* of current, the actual number of contacts in a connector carrying 30 amperes is limited by the "T" rise of the connector and the PC board.

Performance Specifications

- Contact Current Rating*:**
30 amperes, max.
- Dielectric Withstanding Voltage (Sea Level):**
1800 VAC
- Operating Voltage:**
250 VAC, max.
- Insulation Resistance:**
1000 megohms, min.
- Contact Resistance @ 30 amperes:**
2 milliohms, max.
- Operating Temperature:**
-40°C to +95°C
- Contact Engagement Force:**
40 oz. [11.12 N], max.

***When used with a .180 [4.57] wide double-sided PC board with 5 oz. [0.14 Kg] min. copper each side. Consult Tyco Electronics engineering when paralleling contacts for power applications.**

High Current Connectors (Continued)

Crimp, Snap-In Contacts

Material and Finish:

A—Copper alloy CDA-195 plated
.000150 [0.00381] bright tin over
.000030 [0.00076] nickel
B—Copper alloy CDA-195 plated
.000150 [0.00381] silver all over

Related Product Data:

Performance Specifications—
page 173

Connector Housings—page 175

Application Tooling—pages 184, 185

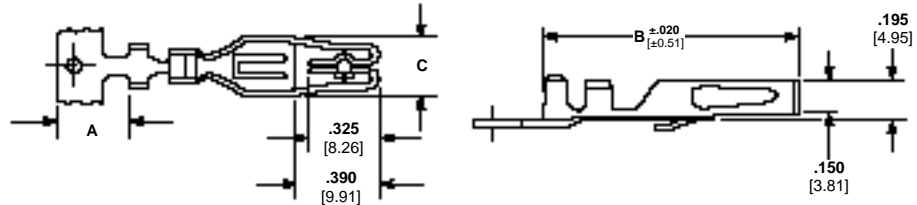
Technical Documents:

(pages 186, 187):

Product Specification
108-9045

Application Specification
114-9005

Instruction Sheets 408-7782,
408-7783, 408-7802



| Plating | Wire Size Range | | Ins. Dia. Range | Dimensions | | | Mateable Daughter Board Thickness | Contact Part Numbers | | Applicator for AMP-O-LECTRIC Machine | Hand Tool 69710-1 Die Insert |
|---------|-----------------|-----------------|-----------------|------------|-------|------|-----------------------------------|----------------------|------------|--------------------------------------|------------------------------|
| | AWG | mm ² | | A | B | C | | Loose Piece | Strip Form | | |
| A | 16-14 | 1.25-2 | .090-.145 | .260 | 1.160 | .285 | .062 1.57 | 530518-1 | 530517-2 | 466439-2 | 90333-1 |
| | | | 2.29-3.68 | 6.60 | 29.46 | 7.24 | | | | | |
| A | 12-10 | 3-6 | .160-.210 | .190 | 1.230 | .285 | .062 1.57 | 530520-1 | 530519-2 | 466438-2 | 90332-1 |
| | | | 4.06-5.33 | 4.83 | 31.24 | 7.24 | | | | | |
| B | 12-10 | 3-6 | .160-.210 | .190 | 1.230 | .285 | .062 1.57 | — | 530519-3 | 466438-2 | 90332-1 |
| | | | 4.06-5.33 | 4.83 | 31.24 | 7.24 | | | | | |
| A | 12-10 | 3-6 | .160-.210 | .190 | 1.230 | .347 | .093 2.36 | — | 531373-2 | 466438-2 | 90332-1 |
| | | | 4.06-5.33 | 4.83 | 31.24 | 8.81 | | | | | |

*Applicators are for AMP-O-LECTRIC Model "K" machines. Consult Tyco Electronics for applicators for other bench machines and lead-making machines.



**Hand Crimping Tool
69710-1**



**Extraction Tool
91116-1**

High Current Connectors, .312 [7.92] Centerline

Housings

With Mounting Ears

Material: White glass-filled polyester, 94V-0 rated

Related Product Data:

Performance Specifications—
page 173

Contacts—page 174

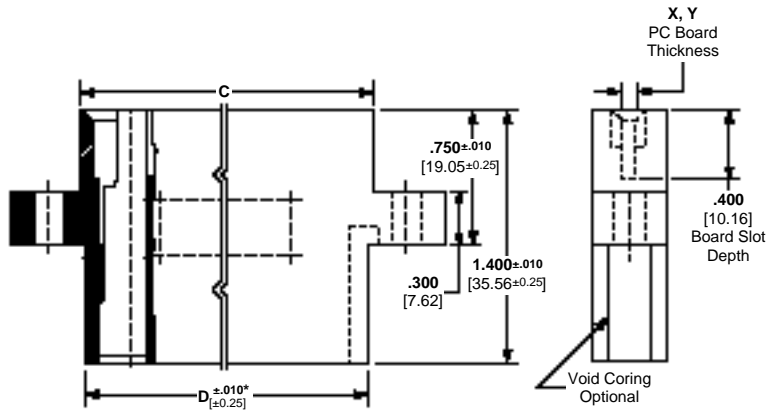
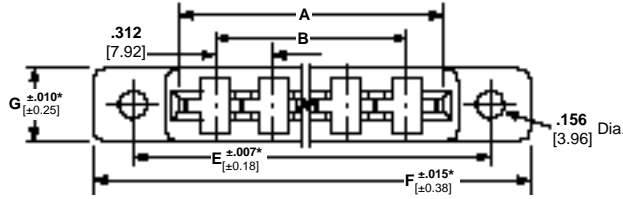
Technical Documents:

(pages 186, 187):

Product Specification

108-9045

Instruction Sheet 408-9123



| No. of Pos. | Dimensions | | | | | | | Housing Part Numbers | |
|-------------|----------------|----------------|----------------|----------------|-----------------|-----------------|---------------|----------------------|-----------------|
| | A | B | C | D | E | F | G | X = .062 [1.57] | Y = .093 [2.36] |
| | | | | | | | | With Mtg. Ears | With Mtg. Ears |
| 3 | 1.024 26.01 | .624 15.85 | 1.164 29.57 | 1.114 28.3 | 1.538 39.07 | 1.972 50.09 | .500 12.70 | — | 531370-2 |
| 4 | 1.336 33.93 | .936 23.77 | 1.476 37.49 | 1.426 36.22 | 1.850 46.99 | 2.284 58.01 | .437 11.10 | 530521-3 | — |
| 8 | 2.584 65.63 | 2.184 55.47 | 2.724 69.19 | 2.674 67.92 | 3.098 78.69 | 3.532 89.71 | .437 11.10 | 530521-6 | — |
| 9 | 2.896 73.56 | 2.496 63.40 | 3.036 77.11 | 2.986 75.84 | 3.410 86.61 | 3.844 97.64 | .437 11.10 | 530521-7 | — |
| 12 | 3.832 97.33 | 3.432 87.17 | 3.972 10.89 | 3.922 99.62 | 4.346 110.39 | 4.780 121.41 | .437 11.10 | 530521-9 | — |

- Notes:**
1. X Housings designed to accept .055-.070 [1.4-1.78] thick daughter boards; use intercontact Keying Plug No. 530533-1.
 2. Y Housings designed to accept .084-.102 [2.13-2.59] thick daughter boards; use intercontact Keying Plug No. 531369-1. + Contact 531373-2.
 3. Use Extraction Tool No. 91116-1 to remove contacts. (Refer to Instruction Sheet 408-7782).
 4. Other connector sizes can be made available, consult Tyco Electronics.

High Current Connectors .312 [7.92] Centerline (Continued)

Housings Preloaded with Solder Tail Contacts

Material and Finish:

Housing—White glass-filled polyester, 94V-0 rated

Contacts—

A—Copper alloy CDA-195 plated .000150 [0.00381] bright tin over .000030 [0.00076] nickel

B—Copper alloy CDA-195 plated .000150 [0.00381] silver plate over .000030 [0.00076] thk. nickel

C—Copper alloy CDA-195 plated .000030 [0.00076] gold in contact area, .000150 [0.00381] tin-lead solder post, over .000030 [0.00076] nickel

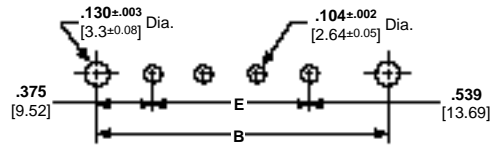
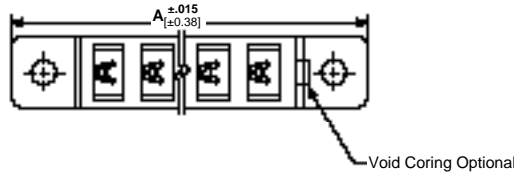
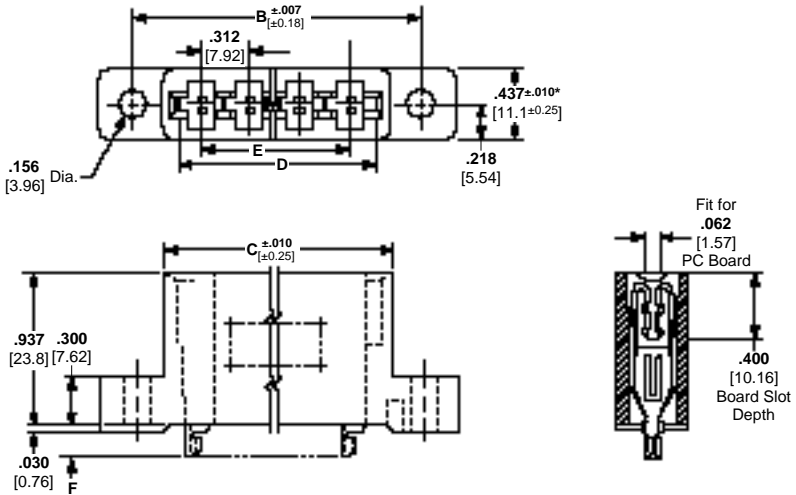
Related Product Data:

Performance Specifications— page 173

Technical Documents:

(pages 186, 187):

Product Specification
108-9045



PC Board Thickness: .062 [1.57]

Recommended PC Board Hole Layout



*May go to .020 [0.51] over nominal at top center of housing.

| No. of Positions | Dimensions | | | | | | Plating | Connector Part Numbers |
|------------------|------------|--------|--------|-------|-------|------|---------|------------------------|
| | A | B | C | D | E | F | | |
| 3 | 1.972 | 1.538 | 1.164 | 1.024 | .624 | .180 | A | 531353-2 |
| | 50.09 | 39.07 | 29.57 | 26.01 | 15.85 | 4.57 | | |
| 4 | 2.284 | 1.850 | 1.476 | 1.336 | .936 | .180 | A | 531353-3 |
| | 58.01 | 46.99 | 37.49 | 33.93 | 23.77 | 4.57 | | |
| 5 | 2.593 | 2.162 | 1.788 | 1.648 | 1.248 | .180 | A | 531353-4 |
| | 65.86 | 54.91 | 45.42 | 41.86 | 31.70 | 4.57 | | |
| 6 | 2.908 | 2.474 | 2.100 | 1.960 | 1.560 | .180 | A | 531353-5 |
| | 73.86 | 62.84 | 53.35 | 49.78 | 39.62 | 4.57 | | |
| 8 | 3.532 | 3.098 | 2.724 | 2.584 | 2.184 | .180 | A | 531353-6 |
| | | | | | | 4.57 | | |
| | 89.71 | 78.69 | 69.19 | 66.63 | 55.47 | .283 | B | 146912-2 |
| | | | | | | 7.19 | | |
| 9 | 3.844 | 3.410 | 3.036 | 2.896 | 2.496 | .180 | A | 531353-7 |
| | | | | | | 4.57 | | |
| 10 | 4.156 | 3.722 | 3.348 | 3.208 | 2.808 | .180 | A | 531353-8 |
| | | | | | | 4.57 | | |
| | 105.56 | 94.54 | 85.04 | 81.48 | 71.32 | .283 | B | 146912-3 |
| | | | | | | 7.19 | | |
| 12 | 4.780 | 4.346 | 3.972 | 3.832 | 3.432 | .180 | A | 531353-9 |
| | | | | | | 4.57 | | |
| | 121.41 | 110.39 | 100.89 | 97.33 | 87.17 | .283 | B | 146912-1 |
| | | | | | | 7.19 | | |

Notes: 1. A .062 [1.57] thick dummy PC board should be inserted into the connector during soldering to a mother board.
2. Other connector sizes can be made available, consult Tyco Electronics.

DUO-TYNE Flag Connectors

Product Facts

- Right angle design permits cabling in close quarters
- Recessed contacts help prevent arcing
- Sizes and configurations available with or without mounting ears
- Lowest installed costs achieved through high-speed compression crimping with AMP matched tooling
- Meets quality and reliability requirements for appliance controls, vending machine subassemblies and business machines
- Recognized under the Component Program of Underwriters Laboratories Inc. File No. E28476 
- Certified by Canadian Standards Association File No. LR 7189 



This flag-type connector is designed to meet the quality and reliability of such equipment as appliance controls, vending machine subassemblies, television, stereo, business machines and other applications with similar control needs.

Among its assembly-saving features is a right-angle design which permits cabling in close quarters, where it does not require frame mounting to attach

the keyed housing to the card cutout and double locking of the contacts when a PC board is inserted. In addition, contacts are recessed to prevent arcing. All sizes and configurations are available with or without mounting ears. Added to low initial cost, lowest installed costs are achieved through high-speed compression crimping with Tyco Electronics matched tooling.

Performance Specifications

Contact Rating*:
5 amperes

High Potential:
2200 VAC, rms

Operating Temperature:
-40°C to +105°C

Vibration:
10 to 55 cps per MIL-STD-1344, Method 202

*Consult Tyco Electronics engineering when paralleling contacts for power applications.

DUO-TYNE Flag Connectors (Continued)

Tapered Beam Crimp, Snap-In Contacts

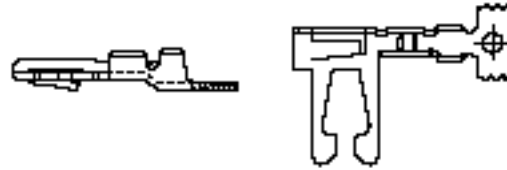
Material and Finish:

Beryllium copper or phosphor bronze (see chart) plated as follows:

Plating A—.000030 [0.00076] gold in mating area, with entire contact under-plated .000050 [0.00127] nickel

Plating B—.000015 [0.00127] gold in mating area, with entire contact under-plated .000050 [0.00127] nickel

Plating C—.000150 [0.00381] tin



Related Product Data:

Performance Specifications—page 177

Connector Housings—page 179

Application Tooling—pages 184, 185

Technical Documents:

(pages 186, 187):

Product Specification 108-9038

Application Specification 114-9002

Instruction Sheets 408-7047, 408-7780, 408-7848, 408-7849

| Wire Size Range | | Insulation Dia. Range | Material | Contact Finish (Plating) | Contact Part Numbers | | Applicator for AMP-O-LECTRIC Machine* | Hand Tool |
|-----------------|-----------------|------------------------|------------------|--------------------------|----------------------|------------|---------------------------------------|-----------|
| AWG | mm ² | | | | Loose Piece | Strip Form | | |
| 26-22 | 0.12-0.4 | .035-.055 0.89-1.40 | Beryllium Copper | A | 530005-3 | 530004-6 | 466586-2 | 90094-4 |
| | | | | B | — | 530004-7 | | |
| | | | | B | — | 530002-7 | | |
| 22-18 | 0.3-0.9 | .060-.090 1.52-2.29 | Phosphor Bronze | C | — | 530002-5 | 466424-2 | 90027-4 |
| | | | | A | — | 530002-3 | | |
| | | | | C | — | 530006-5 | | |
| 18-16 | 0.8-1.4 | .090-.130 2.29-3.30 | Beryllium Copper | A | — | 530006-6 | 466413-2 | — |
| | | | | B | 530007-3 | — | | |
| | | | | C | — | 530006-2 | | |
| 18-16 | 0.8-1.4 | .090-.130 2.29-3.30 | Phosphor Bronze | C | — | 530505-5 | 466413-2 | — |

*Applicators are for AMP-O-LECTRIC Model "K" machines. Consult Tyco Electronics for applicators for other bench machines and lead-making machines.

Hand Crimping Tool



Contact Extraction Tool
810992-1



DUO-TYNE Flag Connectors (Continued)

Housings, With and Without Mounting Ears

Material: Natural nylon

Related Product Data:

Performance Specifications—page 177

Contacts—page 178

PC Board Layout—page 181

Technical Documents:

(pages 186, 187):

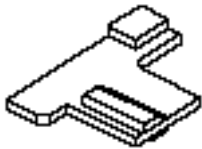
Product Specification 108-9038

Application Specification 114-9002

Instruction Sheet 408-7047

On-Contact Keying Plug

Material: Nylon

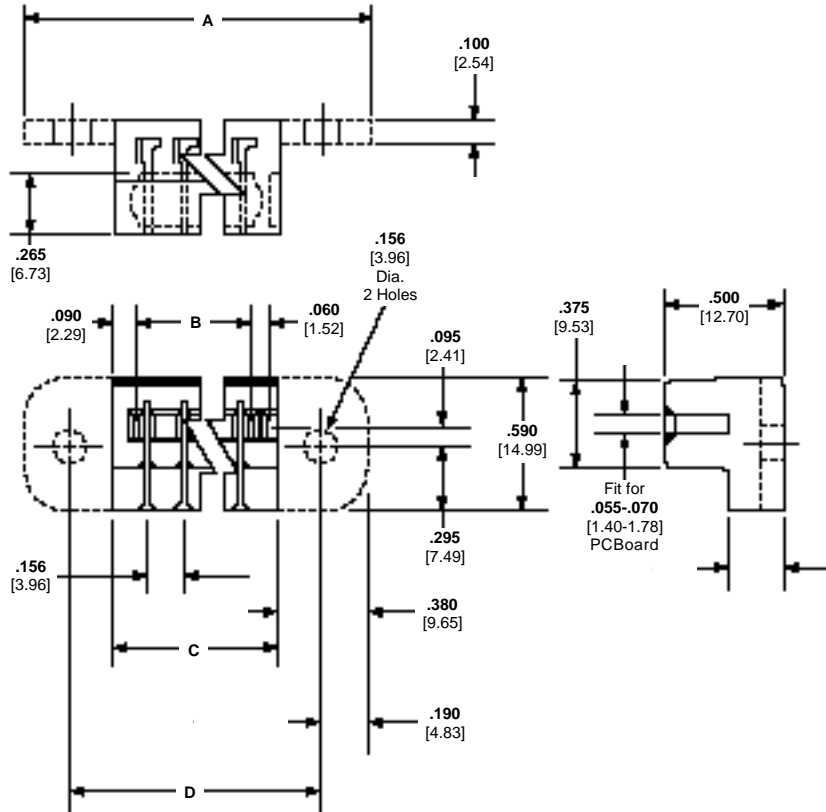


Part Number 583661-1

Technical Documents:

(pages 186, 187):

Instruction Sheet 408-7486



| No. of Pos. | Dimensions | | | | Part Numbers | | | |
|-------------|-----------------|----------------|----------------|-----------------|---------------------|---------------------|-----------------------|---------------------|
| | | | | | With Mounting Ears | | Without Mounting Ears | |
| | A | B | C | D | For Ins. Dia. Range | For Ins. Dia. Range | For Ins. Dia. Range | For Ins. Dia. Range |
| 3 | 1.384 35.15 | .414 10.52 | .624 15.85 | 1.004 25.50 | 582380-9 | — | — | — |
| 5 | — | .736 22.40 | .936 27.74 | — | — | — | 582370-9 | 530853-2 |
| 6 | 1.852 47.04 | .882 22.40 | 1.092 27.74 | 1.472 37.39 | 582382-9 | 530509-1 | 582371-9 | 530853-3 |
| 9 | 2.320 58.93 | 1.350 34.29 | 1.560 39.62 | 1.940 49.28 | 582383-9 | 530509-2 | 582375-9 | — |
| 12 | 2.788 70.82 | 1.818 46.18 | 2.028 51.51 | 2.408 61.16 | 582384-9 | 530509-6 | 582376-9 | 530853-5 |
| 14 | 3.100 78.74 | 2.130 54.10 | 2.340 59.44 | 2.720 69.09 | 582385-9 | 530509-7 | 582372-9 | 530853-6 |
| 15 | 3.256 82.70 | 2.286 58.06 | 2.496 63.40 | 2.876 73.05 | 582386-9 | 530509-3 | 582377-9 | — |
| 18 | 3.724 94.59 | 2.754 69.95 | 2.964 75.29 | 3.344 84.94 | 582387-9 | 530509-8 | 582378-9 | 530853-8 |
| 22 | 4.348 110.44 | 3.378 85.80 | 3.588 91.14 | 3.968 100.79 | 582388-9 | 530509-9 | 582379-9 | — |

Note: Other connector sizes can be made available, consult Tyco Electronics.

DUO-TYNE Flag Connectors (Continued)

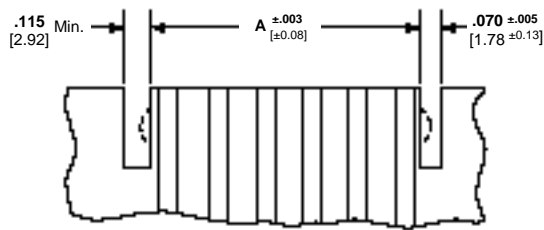
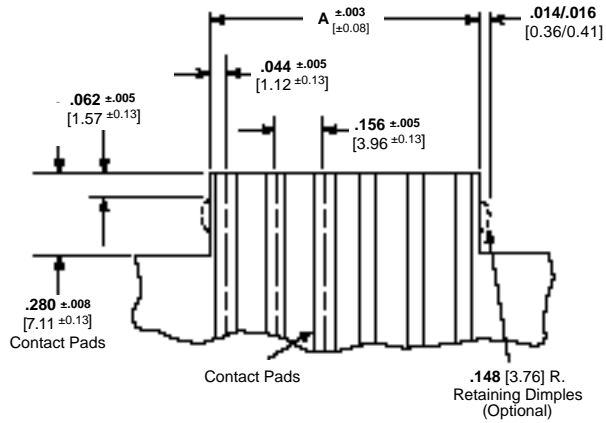
Recommended PC Board Layouts

Related PC Board Data:

Recommended Board Thickness—
.055-.070 [1.40-1.78]

Recommended Chamfer of Mating Edge of Boards—.015 [0.38] x 45°

Recommended Pad Plating—Tin
.000150-.000400 [0.00381-0.01016]
thick

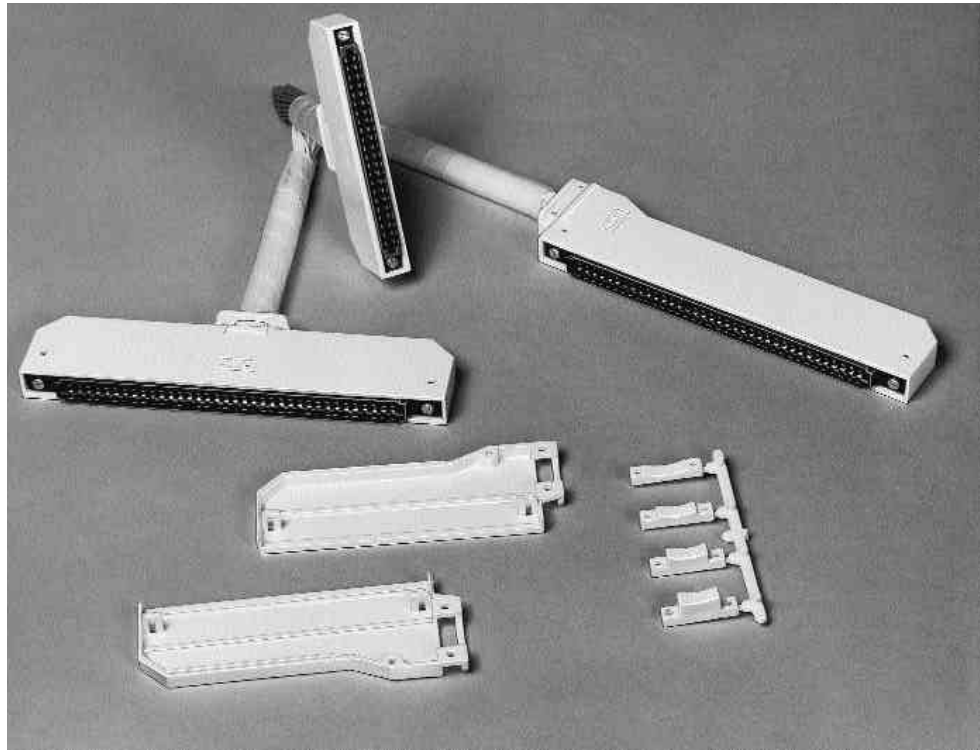


| No. of Positions | Dimension A |
|------------------|----------------|
| 3 | .400 10.16 |
| 5 | .712 18.09 |
| 6 | .868 22.05 |
| 9 | 1.337 33.96 |
| 12 | 1.805 45.85 |
| 14 | 2.117 53.77 |
| 15 | 2.272 57.71 |
| 18 | 2.741 69.62 |
| 22 | 3.365 85.47 |

Printed Circuit Board Connector Hood Assemblies

Product Facts

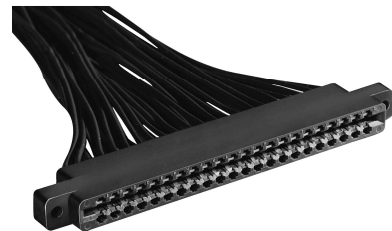
- Can be used with the highly versatile AMP-LEAF and Crimp Snap Twin Leaf printed circuit edge connectors
- Clamping capabilities for wire bundles to .550 [13.97] maximum diameter
- Available with 90° or 180° cable outlet
- All plastic construction—thermoplastic material UL rated 94V-0 for electrical and mechanical applications up to + 105°C
- Thermoplastic material has excellent resistance to common commercial cleaners when used at moderate temperatures
- Separate hood assembly halves permit easy cable dressing
- Furnished in convenient kit form—each kit includes four cable clamp sizes



For use with the following connectors:



Crimp Snap Twin Leaf Connectors
(Pages 154-163)



AMP-LEAF Connectors
(Pages 164-172)

Wire-to-Board Connectors

90° Cable Outlet

Material: Natural color thermoplastic

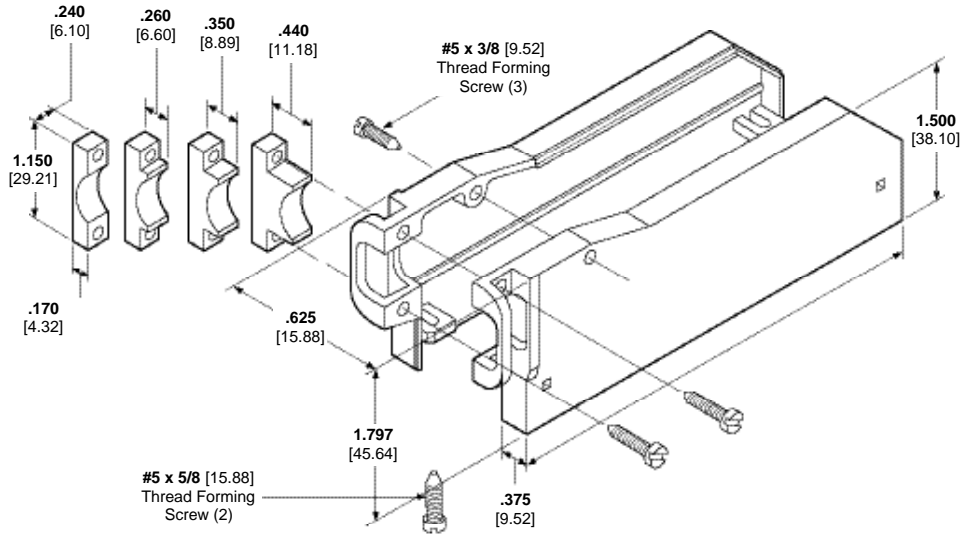
Related Product Data:

Crimp Snap Twin Leaf Connectors—pages 154-163

AMP-LEAF Connectors—pages 164-172

Technical Documents:
(pages 186, 187):

Instruction Sheet 408-7719



| No. of Contact Pos. | Connector Size | | | Hood L Dim. (Max.) | Connector Width .380 [9.65] Max. | | Connector Width .437 [11.10] | |
|---------------------|-----------------|-------------------|-----------------|--------------------|----------------------------------|---------------------------|------------------------------|---------------------------|
| | Contact Centers | Mtg. Hole Centers | Length (Max.) | | AMP Connector Family | Hood Assembly Kit Number* | AMP Connector Family | Hood Assembly Kit Number* |
| 18 | 1.56 3.96 | 3.406 86.51 | 3.685 93.60 | 3.826 97.18 | AMP-LEAF | 530088-3 | — | — |
| 22 | .156 3.96 | 4.031 102.39 | 4.296 109.12 | 4.451 113.06 | — | — | Crimp Snap Twin Leaf | 1-530088-4 |

*All screws and four sizes of cable clamps are supplied with each kit.

Note: Other hood sizes can be made available, consult Tyco Electronics.

Printed Circuit Board Connector Hood Assemblies (Continued)

180° Cable Outlet

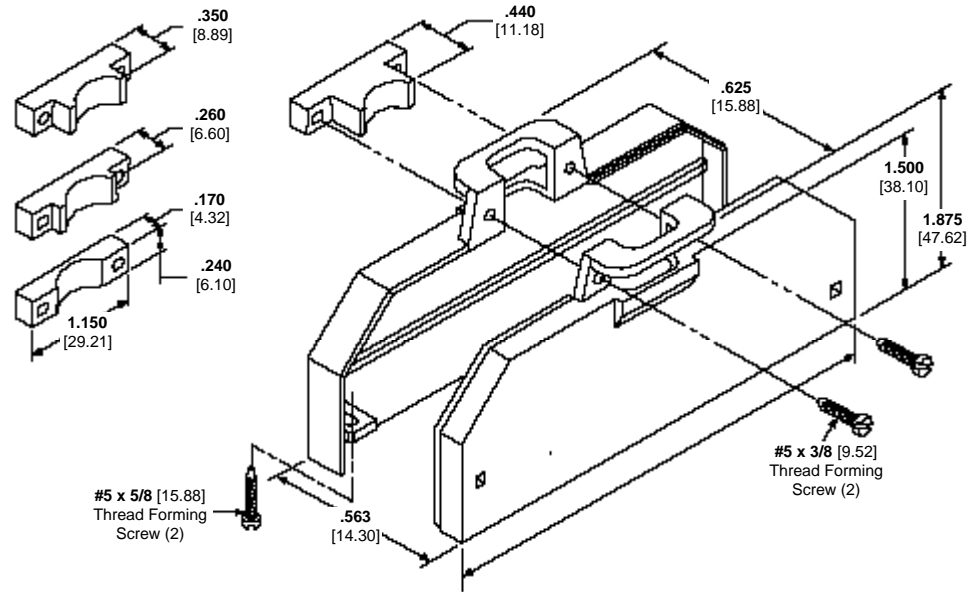
Material: Natural color thermoplastic

Related Product Data:

AMP-LEAF Connectors—
pages 164-172

Technical Documents:

(pages 186, 187):
Instruction Sheet 408-7719



| No. of Pos. | Connector Size | | | Hood L Dim. (Max.) | Connector Width .380 [9.65] Max. | |
|-------------|-----------------|-------------------|-----------------|--------------------|----------------------------------|---------------------------|
| | Contact Centers | Mtg. Hole Centers | Length (Max.) | | AMP Connector Family | Hood Assembly Kit Number* |
| 22 | .156 3.96 | 4.031 102.39 | 4.321 109.76 | 4.451 113.06 | AMP-LEAF | 530087-4 |

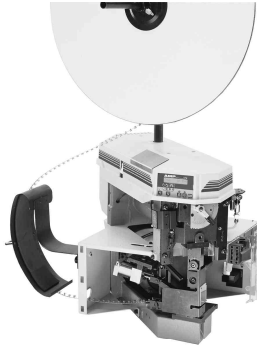
*All screws and four sizes of cable clamps are supplied with each kit.

Note: Other hood sizes can be made available, consult Tyco Electronics.

Application Tooling for Wire Crimp Contacts

Tooling shown on this page is designed to terminate wire crimp contacts used in various wire-to-board connectors.

**AMP-O-LECTRIC Model "G" Terminating Machine
(Shown with Optional Crimp Quality Monitor)**



The AMP-O-LECTRIC Model "G" is a semi-automatic bench-top machine for terminating wire using reeled terminals and contacts. It features a quiet and reliable direct motor drive, micro-processor controls for ease of setup and operation, and guarding and lighting designed for operator convenience and safety. Three versions are available: with

automatic precision adjust and machine-mounted sensors, or with manual precision adjust with or without sensors. All versions will accept existing Tyco Electronics ministyle applicators with minor modifications.

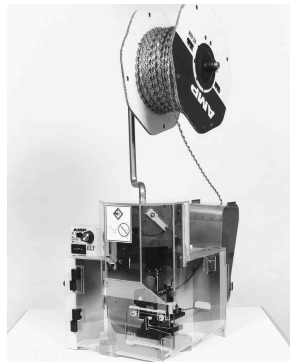
For further details, request Tyco Electronics Catalog 65828.

**AMP-O-MATIC Model II Stripper/Crimper Machine
(Shown with Optional Crimp Quality Monitor)**



This machine also strips wire, and is therefore used to terminate jacketed cable. It features manual precision adjust, keyed strip blades for faster, more accurate setups, and an efficient scrap removal system. Applicators are interchangeable. All adjustments can be made from the front of the machine without special tools.

Entry Level Terminator (ELT), 1338600-(x)

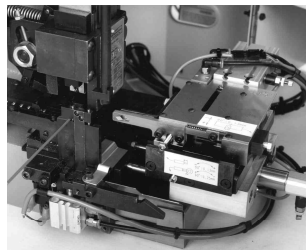


Semiautomatic Bench Terminator for side- and end-feed reeled terminals and contacts. The ELT uses a DC motor with gear box drive. The result is a small-footprint design that is fast and quiet. Cycle time is less than 0.400 sec. with an operation sound level of 76dBa. With a crimp force capacity of 3,000 pounds, the ELT is available for all

but the highest crimp force applications. Optional equipment is also available to meet your specific application requirements.

For more information, request catalog 1308382.

Optional Stripping Module for the ELT and AMP-O-LECTRIC Model G



The combination of the Stripping Module with the AMP-O-LECTRIC Model G Terminator or the Entry Level Terminator provides an economical, proficient method of stripping wire and crimping terminals on the same machine. Wires are stripped moments before crimping, meaning there is virtually no chance

of damaging wire conductors during handling or storage. Once the wire is fed into the start sensor the Stripping Module does the rest, improving placement accuracy.

For more information, request catalog 1309085.

Application Tooling for Wire Crimp Contacts (Continued)

**AMPOMATOR CLS IV+
Lead-Making Machines, 356500-1, -2**



Fully-automatic machines that measure, cut, strip and terminate single leads. Microprocessor-controlled, and programmed and operated using an easy-to-follow, menu-driven touchscreen. Features include direct-drive terminating units with precision crimp height adjustment, fully programmable setups,

wire runout and splice detection, and motorized pre-feed with wire straightener. Crimp quality monitoring is also available. For more information, request catalog 124324.

Crimp Quality Monitor (CQM), 1320420-1, -2



This unique system provides 100% on-the-fly crimp inspection. It measures the crimp height of each termination, and evaluates the quality of each crimp. If a crimp is questionable, the monitor alerts the operator with both visual and audible alarms. It also provides ports for printing and networking. When used with

AMP-O-LECTRIC Model "G" Termination Machines, the monitor is mounted to the machine. When used with AMPOMATOR CLS IV Lead-Making Machines, it is integrated into the machine's operating system. For more information, request catalog 82275.

CERTI-CRIMP Straight Action Hand Tools (SAHT)



Premium grade hand tools. Feature ratchet control to provide complete crimp cycle. Die sets close in a straight line. Include a contact locator and wire stop, plus an insulation crimp adjustment lever, when applicable. Approximate weight 1.3 lb [0.59 kg].

For more information, request catalog 65780.

626 Pneumatic Tool System



Lightweight, air-operated modular tooling system. Accepts a wide variety of interchangeable heads for crimping various types of contacts, terminals and splices onto wires ranging 6-26 AWG [13-0.12 mm²], plus coaxial and fiber optic cable. Available with either hand- or foot-actuation switch. Optional ratchet

control available to provide complete crimp cycle. For more information, request catalog 124208.

The following is a list of technical documents covering the application, performance and maintenance of the AMP Card Edge Connectors presented in this catalog.

Product Specifications describe technical performance characteristics and verification tests. They are intended for the Design, Component and Quality Engineer.

Application Specifications describe requirements for using the product in its intended application and/or crimping information. They are intended for the Packaging and Design Engineer and the Setup person.

Instruction Sheets provide instructions for assembling or applying the product. They are intended for the Manufacturing Assembler or Operator.

Solder Type Board-to-Board Connectors

Standard Edge .050 Series PCI Connectors

Product Specification:

108-14034 Standard Edge .050 Series PCI Connector

Application Specification:

114-26012 Standard Edge .050 Series PCI Connector

Standard Edge .050 Series Connectors

Product Specification:

108-14034 Standard Edge .050 Series Connector

Application Specification:

114-26012 Standard Edge .050 Series Connector

Standard Edge II Connectors

Product Specification:

108-9039 Standard Edge II Connector

Low Profile Connectors

Product Specification:

108-9044 Low Profile Edge Connector

Instruction Sheet:

408-7772 Contact Replacement, Low Profile Edge Connector

Twin Leaf Mother Board Connectors

Product Specification:

108-9027 Twin Leaf Mother Board Connector

Instruction Sheets:

408-7479 Keying Plugs, Twin Leaf Mother Board Connector

408-7498 Connector Layout, Twin Leaf Mother Board Connector

408-7506 Card Guides, Twin Leaf Mother Board Connector

Rotary Cam ZIF Connectors

Product Specification:

108-9048 Rotary Cam PC Board Edge Connector

Instruction Sheet:

408-7911 Rotary Cam ZIF Connectors

Linear ZIF Connectors

Product Specifications:

108-14015 Linear ZIF PC Board Edge Connector, .100 [2.54] Centerline

108-26003 ACTION PIN Contacts

Application Specification:

114-26003 Linear ZIF PC Board Edge Connector, .100 [2.54] Centerline

Instruction Sheets:

408-2665 Linear ZIF, Carrier Removal Tool Series 265924

408-2995 Linear ZIF, Housing Wing Removal and Replacement Tool 266233-1

408-2999 Linear ZIF, T-Bar Insertion Tool Series 266267

408-6915 Linear ZIF, Housing Assembly Insertion Tool Series 313136

408-6916 Linear ZIF, T-Bar Insertion Tool Series 313139

Press-Fit Board-to-Board Connectors

AMP PACE Connectors

Product Specifications:

108-14019 AMP PACE Connector, .125 x .250 [3.18 x 6.35] Centerline

108-26003 ACTION PIN Contacts

Application Specification:

114-26002 AMP PACE Connector

Instruction Sheets:

408-2933 Contact Replacement Tool .100 x .200 [2.54 x 5.08] and .125 x .250 [3.18 x 6.35], AMP PACE Connector

408-2978 Seating Tool Ground Module, AMP PACE Connector

408-2979 Seating Tool Power Module, AMP PACE Connector

408-6726 Seating Tool, .156 x .200 [3.96 x 5.08] Part No. 59955, AMP PACE Connector

408-6727 Seating Tool, .125 x .125 [3.18 x 3.18] Part No. 59953, AMP PACE Connector

408-6881 Contact Replacement Tool .100 x .100 [2.54 x 2.54] with and without Scoops AMP PACE Connector

408-9058 Seating Tool .100 x .200 [2.54 x 5.08] with Card Scoops, Part No. 58150, AMP PACE Connector

408-9063 Seating Tool .125 x .250 [3.18 x 6.35] Part No. 58142, AMP PACE Connector

408-9067 Seating Tool .100 x .200 [2.54 x 5.08] Part No. 58140, AMP PACE Connector

408-9091 Accessories and Tooling, .100 x .200 [2.54 x 5.08] AMP PACE Connector

408-9119 Seating Tool, .125 x .250 [3.18 x 6.35] with Card Scoops, Part No. 58184, AMP PACE Connector

408-9186 Contact Replacement Tool; .100 x .200 [2.54 x 5.08], .125 x .125 [3.18 x 3.18], .125 x .250 [3.18 x 6.35] with Scoops, .156 x .200 [3.96 x 5.08], AMP PACE Connector

408-9188 Seating Tool .100 x .100 [2.54 x 2.54] Part No. 58200, AMP PACE Connector

ECONOMATE Connectors

Product Specification:

108-26002 ECONOMATE Connector

Instruction Sheet:

408-9091 Accessories and Tooling, .100 x .200 [2.54 x 5.08] AMP PACE Connector

Wire-to-Board Connectors

Crimp Snap Twin Leaf Connectors

Product Specification:

108-9031 Crimp Snap Twin Leaf Connector (Bifurcated Contacts)

Application Specification:

114-9004 Contact, Twin Leaf Connector

Instruction Sheets:

- 408-7527** Accessories and Contacts, Crimp Snap Twin Leaf Connector
- 408-7529** Extraction Tool 91073-1
- 408-7531** Hand Tool 90268-1, Single Crimp, 28-24 AWG [0.08-0.2 mm²] Wire
- 408-7551** Hand Tool 90264-1, Double Crimp, 22-20 AWG [0.3-0.6 mm²] and 18 AWG [0.8-0.9 mm²] Wire
- 408-7583** Hand Tool 90285-1, Double Crimp, 20-18 AWG [0.5-0.9 mm²] and 16 AWG [1.25-1.4 mm²] Wire
- 408-8547** CERTI-CRIMP II Straight Action Hand Tools

AMP-LEAF Connectors

Product Specifications:

108-9013 AMP-LEAF Connector
108-9043 AMP-LEAF Connector, Tin Plated Contacts

Application Specification:

114-9003 Contact, AMP-LEAF Connector

Instruction Sheets:

- 408-6951** Lubricant for tin plating, fretting, corrosion
- 408-7035** Retaining Spring 42973
- 408-7036** On-Contact Keying Plugs 480143 and 582756
- 408-7037** Accessories and Contacts, AMP-LEAF Connector
- 408-7045** Extraction Tool 465195
- 408-7068** Intercontact Keying Plug 582501
- 408-7339** Intercontact Keying Plug 583274
- 408-7419** Commoning Springs
- 408-7622** Hand Tool 90017-3, 22-20 AWG [0.3-0.6 mm²], Two 22 AWG [0.3-0.4 mm²] or One 18 AWG [0.8-0.9 mm²] Wire
- 408-7623** Hand Tool 90028-3, 26-22 AWG [0.12-0.4 mm²], Two 22 AWG [0.3-0.4 mm²] Wires
- 408-7624** Hand Tool 90031-8, Two 18 AWG [0.8-0.9 mm²] Wires
- 408-7626** Hand Tool 90101-3, 20 AWG [0.5-0.6 mm²] or Two 20 AWG [0.5-0.6 mm²] Wires

High Current Connectors

Product Specification:

108-9045 High Current Edge Connector

Application Specification:

114-9005 Contact, High Current Edge Connector

Instruction Sheets:

- 408-7782** Extraction Tool 91116-1, High Current Connector
- 408-7783** Die Inserts 90332-1 and 90332-2
- 408-7802** Die Inserts 90333-1 and 90333-2
- 408-9123** High Current Connectors

DUO-TYNE Flag Connectors

Product Specification:

108-9038 DUO-TYNE Flag Connector, Tapered Beam Contact

Application Specification:

114-9002 Contact, DUO-TYNE Flag Connector

Instruction Sheets:

- 408-7047** DUO-TYNE Flag Right-Angle Connector
- 408-7486** On-Contact Keying Plug 583661
- 408-7780** Hand Tool 90335-1, 18-16 AWG [0.8-1.4 mm²] Wire
- 408-7848** Hand Tool 90027-4, 22-18 AWG [0.3-0.9 mm²] Wire
- 408-7849** Hand Tool 90094-4, 26-22 AWG [0.12-0.4 mm²] Wire

Printed Circuit Board Connector Hood Assemblies

Instruction Sheet:

408-7719 Printed Circuit Board Connector Hood Assemblies

Part Number Cross Reference—Tyco Part Number to Acquired Part Number

All Tyco Electronic Part Numbers without a corresponding acquired Part Number are listed as base part numbers only. Complete part numbers (with prefixes and/or suffixes) are shown on the page(s) indicated.
Contact Engineering if no corresponding Tyco Number is available.

| Tyco Part Number | Acquired Part Number | Page Number |
|------------------|----------------------|---|
| 11299 | — | 9 |
| 42973 | — | 171 |
| 58084 | — | 117 |
| 58140 | — | 115 |
| 58142 | — | 115 |
| 58143 | — | 115 |
| 58150 | — | 115 |
| 58184 | — | 115 |
| 58200 | — | 115 |
| 58210 | — | 115 |
| 58218 | — | 115 |
| 59881 | — | 112 |
| 60151 | — | 165 |
| 66067 | — | 166 |
| 66084 | — | 165 |
| 66092 | — | 171 |
| 69710 | — | 174 |
| 90017 | — | 165 |
| 90027 | — | 174 |
| 90028 | — | 165 |
| 90031 | — | 165 |
| 90094 | — | 174 |
| 90101 | — | 165 |
| 90264 | — | 155 |
| 90268 | — | 155 |
| 90285 | — | 155 |
| 90332 | — | 174 |
| 90333 | — | 174 |
| 91081 | — | 72 |
| 91088 | — | 72 |
| 91116 | — | 174,175 |
| 91535 | — | 155 |
| 98014 | — | 57 |
| 98341 | — | 150 |
| 117169 | — | 112,122 |
| 117249 | — | 124,126 |
| 117269 | — | 124,126 |
| 117272 | — | 126 |
| 117285 | — | 121,126 |
| 117296 | — | 121,126 |
| 117311 | — | 123 |
| 117793 | — | 126 |
| 117795 | — | 120,126 |
| 117796 | — | 126 |
| 117798 | — | 120,126 |
| 117879 | — | 126 |
| 117880 | — | 126 |
| 118243 | — | 123 |
| 118778 | — | 121 |
| 118951 | — | 120 |
| 118982 | — | 100,102, 104,105, 106,108, 110,111, 120,121 |
| 119136 | — | 123 |
| 119163 | — | 103 |
| 119196 | — | 88 |
| 119200 | — | 107 |
| 119202 | — | 107 |
| 119216 | — | 103 |
| 119216 | — | 103 |
| 119237 | — | 101 |
| 119254 | — | 110 |
| 119256 | — | 110 |
| 119311 | — | 88 |
| 119341 | — | 112 |
| 119413 | — | 101 |
| 119552 | — | 105 |
| 119677 | — | 103 |

| Tyco Part Number | Acquired Part Number | Page Number |
|------------------|----------------------|---|
| 119726 | — | 103 |
| 119734 | — | 101 |
| 119736 | — | 101 |
| 119738 | — | 103 |
| 119790 | — | 110 |
| 119791 | — | 103 |
| 119802 | — | 100,102, 104,106, 108,110, 111,120 |
| 119822 | — | 107 |
| 119831 | — | 101 |
| 119840 | — | 107 |
| 119841 | — | 107 |
| 119853 | — | 104 |
| 119880 | — | 105 |
| 119950 | — | 93 |
| 145031 | — | 14 |
| 145089 | — | 23 |
| 145098 | — | 9 |
| 145113 | — | 8 |
| 145116 | — | 176 |
| 145154 | — | 9 |
| 145165 | — | 10 |
| 145166 | — | 8 |
| 145167 | — | 9 |
| 145168 | — | 10 |
| 145169 | — | 8 |
| 145246 | — | 10 |
| 146912 | — | 176 |
| 147400 | — | 85 |
| 147668 | — | 129 |
| 176137 | — | 17 |
| 176139 | — | 25 |
| 265868 | — | 126 |
| 265871 | — | 95,115, 126 |
| 265879 | — | 126 |
| 265881 | — | 126 |
| 265902 | — | 126 |
| 265904 | — | 126 |
| 265905 | — | 126 |
| 265906 | — | 126 |
| 265910 | — | 126 |
| 265911 | — | 126 |
| 265912 | — | 126 |
| 265924 | — | 95,126 |
| 265931 | — | 126 |
| 265937 | — | 126 |
| 265962 | — | 126 |
| 266129 | — | 126 |
| 266220 | — | 115 |
| 266233 | — | 95,186 |
| 266235 | — | 95 |
| 266264 | — | 95 |
| 266267 | — | 95 |
| 313136 | — | 95 |
| 313139 | — | 95 |
| 313256 | — | 95 |
| 343371 | — | 165 |
| 350396 | — | 21 |
| 356500 | — | 185 |
| 465195 | — | 165 |
| 466366 | — | 165 |
| 466367 | — | 165 |
| 466368 | — | 165 |
| 466413 | — | 178 |
| 466424 | — | 178 |
| 466438 | — | 174 |
| 466439 | — | 174 |
| 466577 | — | 155 |
| 466586 | — | 178 |
| 466622 | — | 155 |
| 466713 | — | 155 |
| 466912 | — | 155 |
| 466919 | — | 155 |
| 466928 | — | 155 |

| Tyco Part Number | Acquired Part Number | Page Number |
|------------------|----------------------|-----------------|
| 480110 | — | 165,168, 169 |
| 480133 | — | 165,168, 169 |
| 480142 | — | 165,168, 169 |
| 480143 | — | 171 |
| 530002 | — | 178 |
| 530004 | — | 178 |
| 530005 | — | 178 |
| 530006 | — | 178 |
| 530007 | — | 178 |
| 530030 | — | 72 |
| 530061 | — | 170 |
| 530087 | — | 183 |
| 530088 | — | 182 |
| 530213 | — | 162 |
| 530218 | — | 158 |
| 530238 | — | 160 |
| 530245 | — | 156 |
| 530265 | — | 72 |
| 530267 | — | 72 |
| 530268 | — | 72 |
| 530270 | — | 72 |
| 530278 | — | 72 |
| 530282 | — | 72 |
| 530286 | — | 72 |
| 530290 | — | 72 |
| 530291 | — | 72 |
| 530292 | — | 66 |
| 530384 | — | 22 |
| 530396 | — | 21 |
| 530505 | — | 178 |
| 530509 | — | 179 |
| 530517 | — | 174 |
| 530518 | — | 174 |
| 530519 | — | 174 |
| 530520 | — | 174 |
| 530521 | — | 175 |
| 530533 | — | 175 |
| 530654 | — | 62 |
| 530655 | — | 62 |
| 530656 | — | 62 |
| 530657 | — | 62 |
| 530659 | — | 60 |
| 530662 | — | 60 |
| 530663 | — | 60 |
| 530664 | — | 60 |
| 530666 | — | 62 |
| 530667 | — | 62 |
| 530668 | — | 62 |
| 530669 | — | 62 |
| 530671 | — | 60 |
| 530672 | — | 60 |
| 530673 | — | 60 |
| 530674 | — | 60 |
| 530677 | — | 62 |
| 530678 | — | 62 |
| 530689 | — | 62 |
| 530825 | — | 21 |
| 530826 | — | 22 |
| 530841 | — | 20 |
| 530842 | — | 20 |
| 530843 | — | 17 |
| 530844 | — | 18 |
| 530851 | — | 170 |
| 530853 | — | 179 |
| 531004 | — | 80 |
| 531007 | — | 78 |
| 531019 | — | 74 |
| 531020 | — | 74 |
| 531021 | — | 74 |
| 531023 | — | 77 |
| 531024 | — | 77 |
| 531025 | — | 78 |
| 531026 | — | 78 |
| 531250 | — | 22,162 |

Part Number Cross Reference
Tyco Part Number to Acquired Part Number

Part Number Cross Reference—Tyco Part Number to Acquired Part Number

| Tyco Part Number | Acquired Part Number | Page Number | Tyco Part Number | Acquired Part Number | Page Number | Tyco Part Number | Acquired Part Number | Page Number |
|------------------|----------------------|--------------|------------------|----------------------|--------------------------------|------------------|----------------------|-------------|
| 531341 | — | 20 | 583723 | — | 165,167 | 0-1437261-2 | C8D50PF29023 | 138 |
| 531353 | — | 176 | 583724 | — | 165,167 | 0-1437261-5 | C8D50PF29033 | 138 |
| 531369 | — | 175 | 583725 | — | 165,167 | 0-1437261-6 | C8D50PF29043 | 140 |
| 531370 | — | 175 | 583726 | — | 165,167 | 0-1437262-4 | C6D06PF29013 | 148 |
| 531373 | — | 174,175 | 583752 | — | 72 | 0-1437262-5 | C6D06PF29043 | 148 |
| 531395 | — | 75 | 583753 | — | 72 | 0-1437262-6 | C6D10PF29022 | 146 |
| 531395 | — | 75 | 583754 | — | 72 | 0-1437262-7 | C6D10PF29043 | 148 |
| 531396 | — | 75 | 583755 | — | 72 | 0-1437262-9 | C6D15PF29022 | 146 |
| 531414 | — | 76 | 583760 | — | 171 | 0-1437263-7 | C7D06PF29023 | 142 |
| 531433 | — | 62 | 583764 | — | 162 | 0-1437263-8 | C7D06PF29043 | 144 |
| 531476 | — | 155 | 583853 | — | 155 | 0-1437264-3 | C1D18PF29015 | 131 |
| 531477 | — | 155 | 583854 | — | 156 | 0-1437264-6 | C1D20PF29015 | 131 |
| 531478 | — | 155 | 583857 | — | 162 | 0-1437264-7 | C1D20PF29043 | 131 |
| 531534 | — | 66 | 583859 | — | 161 | 0-1437264-9 | C1D25PF29013 | 131 |
| 531863 | — | 79 | 583861 | — | 157 | 0-1437267-5 | A6D06DS29A3 | 54 |
| 532563 | — | 79 | 583864 | — | 159 | 0-1437267-6 | A6D10DS29A2 | 54 |
| 532600 | — | 23 | 583873 | — | 159 | 0-1437267-7 | A6D10DS29C2 | 54 |
| 536128 | — | 25 | 583875 | — | 155 | 0-1437267-8 | A6D10DS29C3 | 54 |
| 582140 | — | 165,168 | 583879 | — | 156 | 0-1437267-9 | A6D10RA29A | 56 |
| 582147 | — | 165,168 | 583884 | — | 156 | 0-1437268-4 | A7D06DS29C2 | 49 |
| 582264 | — | 165,168 | 583900 | — | 158 | 0-1437268-5 | A7D06RA29C | 52 |
| 582355 | — | 166 | 583975 | — | 170 | 0-1437268-6 | A7D06RA29E | 52 |
| 582370 | — | 179 | 583989 | — | 165 | 0-1437268-7 | A7D10DS29C2 | 49 |
| 582371 | — | 179 | 583990 | — | 165 | 0-1437268-8 | A7D10RA29AM231 | 51 |
| 582372 | — | 179 | 583991 | — | 165 | 0-1437268-9 | A7D10WW29A3 | 49 |
| 582375 | — | 179 | 645115 | — | 87 | 0-1437270-1 | A8D31DS29B3 | 43 |
| 582376 | — | 179 | 645116 | — | 91 | 0-1437270-2 | A8D31DS29C2 | 43 |
| 582377 | — | 179 | 645135 | — | 84 | 0-1437270-3 | A8D31DS29D2 | 43 |
| 582378 | — | 179 | 645142 | — | 92 | 0-1437270-4 | A8D31RA29A | 46 |
| 582379 | — | 179 | 645145 | — | 85 | 0-1437270-6 | A8D31RA29C | 46 |
| 582380 | — | 179 | 645146 | — | 89 | 0-1437270-7 | A8D31RA29CM233 | 47 |
| 582382 | — | 179 | 645147 | — | 86 | 0-1437270-8 | A8D31RA29E | 46 |
| 582383 | — | 179 | 645149 | — | 90 | 0-1437270-9 | A8D31RA29F | 46 |
| 582384 | — | 179 | 645155 | — | 66 | 0-1437274-3 | C7D06DS29C1 | 36 |
| 582385 | — | 179 | 645169 | — | 25 | 0-1437274-5 | C7D15DS29C1 | 36 |
| 582386 | — | 179 | 645200 | — | 176 | 0-1437274-7 | C7D15DS29C3 | 36 |
| 582387 | — | 179 | 645235 | — | 24 | 0-1437274-8 | C7D18DS29C3 | 36 |
| 582388 | — | 179 | 645293 | — | 80,82 | 0-1437274-9 | C7D22DS29C1 | 36 |
| 582500 | — | 165,168, 169 | 645384 | — | 23 | 0-1437276-2 | C8D31DS29A3 | 32 |
| 582501 | — | 171 | 645394 | — | 105 | 0-1437276-3 | C8D31DS29C1 | 31 |
| 582963 | — | 165,168 | 650025 | — | 17,18, 20,21, 22,23, 24,25, 63 | 0-1437276-5 | C8D31DS29C2 | 31 |
| 583167 | — | 165,168 | 650059 | — | 109 | 0-1437276-6 | C8D31DS29C3 | 32 |
| 583204 | — | 165 | 650083 | — | 79 | 0-1437276-8 | C8D31DS29D1 | 31 |
| 583274 | — | 162,171 | 650090 | — | 12 | 0-1437276-9 | C8D31DS29D3 | 32 |
| 583280 | — | 165,168 | 650091 | — | 13 | 1-1437260-4 | C8D06PF29013 | 140 |
| 583294 | — | 166 | 650092 | — | 12 | 1-1437260-5 | C8D06PF29043 | 140 |
| 583361 | — | 165 | 650118 | — | 23 | 1-1437261-1 | C8D60PF29023 | 138 |
| 583407 | — | 66,72 | 650122 | — | 103 | 1-1437262-0 | C6D15PF29023 | 146 |
| 583425 | — | 71 | 650123 | — | 103 | 1-1437262-3 | C6D18PF29013 | 148 |
| 583454 | — | 171 | 650124 | — | 103 | 1-1437262-4 | C6D18PF29023 | 146 |
| 583458 | — | 170 | 650148 | — | 117 | 1-1437262-8 | C6D22PF29013 | 148 |
| 583485 | — | 66,72 | 650149 | — | 117 | 1-1437262-9 | C6D22PF29023 | 146 |
| 583486 | — | 66,72 | 650150 | — | 117 | 1-1437263-4 | C7D18PF29012 | 144 |
| 583533 | — | 66,72 | 650179 | — | 14 | 1-1437263-5 | C7D18PF29013 | 144 |
| 583544 | — | 170 | 650181 | — | 12 | 1-1437263-6 | C7D18PF29022 | 142 |
| 583545 | — | 170 | 650187 | — | 23 | 1-1437263-7 | C7D18PF29023 | 142 |
| 583552 | — | 167 | 650207 | — | 18 | 1-1437263-8 | C7D18PF29043 | 144 |
| 583555 | — | 165 | 650263 | — | 17 | 1-1437263-9 | C7D20PF29012 | 144 |
| 583599 | — | 170 | 650281 | — | 117 | 1-1437264-0 | C1D25PF29015 | 131 |
| 583616 | — | 155 | 650297 | — | 103 | 1-1437264-5 | C1D35PF29013 | 131 |
| 583617 | — | 165,167 | 650616 | — | 25 | 1-1437264-6 | C1D35PF29015 | 131 |
| 583649 | — | 155 | 650718 | — | 20 | 1-1437265-0 | W8D18PF29063 | 136 |
| 583660 | — | 68,72 | 650719 | — | 14 | 1-1437265-2 | W8D22PF29043 | 134 |
| 583661 | — | 179 | 650728 | — | 19 | 1-1437265-3 | W8D25PF29013 | 134 |
| 583671 | — | 70 | 678034 | — | 107 | 1-1437265-4 | W8D25PF29063 | 136 |
| 583679 | — | 68,72 | 678035 | — | 111 | 1-1437265-5 | W8D25PF29093 | 136 |
| 583680 | — | 165,167 | 687775 | — | 155 | 1-1437265-6 | W8D28PF29013 | 134 |
| 583685 | — | 165,167 | 810992 | — | 178 | 1-1437265-7 | W8D28PF29093 | 136 |
| 583691 | — | 162 | 1320420 | — | 185 | 1-1437266-0 | 98230 | 150 |
| 583692 | — | 68,72 | 1338600 | — | 184 | 1-1437266-1 | 98231 | 150 |
| 583694 | — | 66 | 1437266 | — | 151 | 1-1437266-6 | 98236 | 150 |
| 583714 | — | 72 | 1490560 | — | 150 | 1-1437266-8 | 98238 | 150 |
| 583715 | — | 68,72 | 1490563 | — | 150 | 1-1437267-0 | A6D10RA29AM233 | 56 |
| 583717 | — | 157 | 1571235 | — | 109 | 1-1437267-1 | A6D10RA29C | 56 |
| 583718 | — | 157 | | | | 1-1437267-2 | A6D10RA29E | 56 |
| 583722 | — | 165,167 | | | | 1-1437267-3 | A6D10WW29A3 | 54 |
| | | | | | | 1-1437267-4 | A6D12DS29C2 | 54 |

Part Number Cross Reference—Tyco Part Number to Acquired Part Number

| Tyco Part Number | Acquired Part Number | Page Number |
|------------------|----------------------|-------------|
| 9-1437269-4 | A8D30WW29A3 | 44 |
| 9-1437269-5 | A8D30WW29B3 | 44 |
| 9-1437269-8 | A8D31DS29A2 | 43 |
| 9-1437269-9 | A8D31DS29A3 | 43 |
| 9-1437275-0 | C8D28DS29D3 | 32 |
| 9-1437275-1 | C8D28PF29012 | 140 |
| 9-1437275-3 | C8D30DS29C1 | 31 |
| 9-1437275-5 | C8D30DS29C3 | 32 |
| 9-1437275-6 | C8D30DS29D1 | 31 |
| 9-1437275-7 | C8D30DS29D3 | 32 |
| 9-1437275-8 | C8D30DS29E1 | 31 |
| 9-1437275-9 | C8D30DS29E3 | 32 |
| AP3 | — | 149 |
| BMEP 1K/2K | — | 149 |
| BMEP 3T/5T | — | 149 |
| MEP 6T/12T | — | 149 |
| Model G | — | 184 |
| SAHT | — | 185 |

Part Number Cross Reference—Acquired Part Number to Tyco Part Number

| Acquired Part Number | Tyco Part Number | Page Number |
|----------------------|------------------|-------------|
| C8D60PF29143 | — | 138 |
| C9D020PF60048 | 3-1437264-4 | 129 |
| C9D030PF60048 | 3-1437264-5 | 129 |
| C9D040PF60048 | — | 129 |
| C9D050PF60048 | — | 129 |
| C9D060PF60048 | 3-1437264-6 | 129 |
| W8D18DS29063 | — | 34 |
| W8D18DS29093 | — | 34 |
| W8D18PF29012 | — | 134 |
| W8D18PF29013 | — | 134 |
| W8D18PF29042 | — | 134 |
| W8D18PF29043 | — | 134 |
| W8D18PF29062 | — | 136 |
| W8D18PF29063 | 1-1437265-0 | 136 |
| W8D18PF29092 | — | 136 |
| W8D18PF29093 | — | 136 |
| W8D20DS29063 | — | 34 |
| W8D20DS29093 | — | 34 |
| W8D20PF29012 | — | 134 |
| W8D20PF29013 | — | 134 |
| W8D20PF29042 | — | 134 |
| W8D20PF29043 | — | 134 |
| W8D20PF29062 | — | 136 |
| W8D20PF29063 | — | 136 |
| W8D20PF29092 | — | 136 |
| W8D20PF29093 | — | 136 |
| W8D22DS29063 | — | 34 |
| W8D22DS29093 | — | 34 |
| W8D22PF29012 | — | 134 |
| W8D22PF29013 | — | 134 |
| W8D22PF29042 | — | 134 |
| W8D22PF29043 | 1-1437265-2 | 134 |
| W8D22PF29062 | — | 136 |
| W8D22PF29063 | — | 136 |
| W8D22PF29092 | — | 136 |
| W8D22PF29093 | — | 136 |
| W8D25DS29063 | — | 34 |
| W8D25DS29093 | — | 34 |
| W8D25PF29012 | — | 134 |
| W8D25PF29013 | 1-1437265-3 | 134 |
| W8D25PF29042 | — | 134 |
| W8D25PF29043 | — | 134 |
| W8D25PF29062 | — | 136 |
| W8D25PF29063 | 1-1437265-4 | 136 |
| W8D25PF29092 | — | 136 |
| W8D25PF29093 | 1-1437265-5 | 136 |
| W8D28DS29063 | — | 34 |
| W8D28DS29093 | — | 34 |
| W8D28PF29012 | — | 134 |
| W8D28PF29013 | 1-1437265-6 | 134 |
| W8D28PF29042 | — | 134 |
| W8D28PF29043 | — | 134 |
| W8D28PF29062 | — | 136 |
| W8D28PF29063 | — | 136 |
| W8D28PF29092 | — | 136 |
| W8D28PF29093 | 1-1437265-7 | 136 |
| W8D30DS29063 | — | 34 |
| W8D30DS29093 | — | 34 |
| W8D30PF29012 | — | 134 |
| W8D30PF29013 | 2-1437265-0 | 134 |
| W8D30PF29042 | — | 134 |
| W8D30PF29043 | 2-1437265-1 | 134 |
| W8D30PF29062 | — | 136 |
| W8D30PF29063 | — | 136 |
| W8D30PF29092 | — | 136 |
| W8D30PF29093 | — | 136 |
| W8D35DS29063 | — | 34 |
| W8D35DS29093 | — | 34 |
| W8D35PF29012 | — | 134 |
| W8D35PF29013 | 2-1437265-3 | 134 |
| W8D35PF29042 | — | 134 |
| W8D35PF29043 | — | 134 |
| W8D35PF29062 | — | 136 |
| W8D35PF29063 | 2-1437265-5 | 136 |
| W8D35PF29092 | — | 136 |
| W8D35PF29093 | — | 136 |
| W8D36DS29063 | — | 34 |
| W8D36DS29093 | — | 34 |
| W8D36PF29012 | — | 134 |
| W8D36PF29013 | 2-1437265-6 | 134 |
| W8D36PF29042 | — | 134 |
| W8D36PF29043 | 2-1437265-7 | 134 |
| W8D36PF29062 | — | 136 |
| W8D36PF29063 | — | 136 |
| W8D36PF29092 | — | 136 |
| W8D36PF29093 | 2-1437265-8 | 136 |
| W8D40DS29063 | — | 34 |
| W8D40DS29093 | — | 34 |

| Acquired Part Number | Tyco Part Number | Page Number |
|----------------------|------------------|-------------|
| W8D40PF29012 | — | 134 |
| W8D40PF29013 | 3-1437265-0 | 134 |
| W8D40PF29042 | — | 134 |
| W8D40PF29043 | — | 134 |
| W8D40PF29062 | — | 136 |
| W8D40PF29063 | — | 136 |
| W8D40PF29092 | — | 136 |
| W8D40PF29093 | — | 136 |
| W8D43DS29063 | — | 34 |
| W8D43DS29093 | — | 34 |
| W8D43PF29012 | — | 134 |
| W8D43PF29013 | — | 134 |
| W8D43PF29042 | — | 134 |
| W8D43PF29043 | — | 134 |
| W8D43PF29062 | — | 136 |
| W8D43PF29063 | — | 136 |
| W8D43PF29092 | — | 136 |
| W8D43PF29093 | — | 136 |
| W8D45DS29063 | — | 34 |
| W8D45DS29093 | — | 34 |
| W8D45PF29012 | — | 134 |
| W8D45PF29013 | — | 134 |
| W8D45PF29042 | — | 134 |
| W8D45PF29043 | — | 134 |
| W8D45PF29062 | — | 136 |
| W8D45PF29063 | — | 136 |
| W8D45PF29092 | — | 136 |
| W8D45PF29093 | — | 136 |
| W8D50DS29063 | — | 34 |
| W8D50DS29093 | — | 34 |
| W8D50PF29012 | 3-1437265-4 | 134 |
| W8D50PF29013 | 3-1437265-5 | 134 |
| W8D50PF29042 | — | 134 |
| W8D50PF29043 | 3-1437265-6 | 134 |
| W8D50PF29062 | 3-1437265-7 | 136 |
| W8D50PF29063 | — | 136 |
| W8D50PF29092 | — | 136 |
| W8D50PF29093 | — | 136 |
| W8D60DS29063 | — | 34 |
| W8D60DS29093 | — | 34 |
| W8D60PF29012 | — | 134 |
| W8D60PF29013 | 3-1437265-9 | 134 |
| W8D60PF29042 | — | 134 |
| W8D60PF29043 | — | 134 |
| W8D60PF29062 | — | 136 |
| W8D60PF29063 | — | 136 |
| W8D60PF29092 | — | 136 |
| W8D60PF29093 | — | 136 |

For additional component solutions for Industrial Machinery, Instrumentation, Security, and related applications, request the following brochures:

Brochure No. 889439 – Industrial Machinery

Brochure No. 1307285 – Instrumentation

Brochure No. 1308325 – Security

These brochures list catalog sources for connectors, switches, terminal blocks, relays, timers, circuit breakers, and cable assemblies available from Tyco Electronics.

Related Product Information

tyco
Electronics

interconnect solutions for...

- Connectors
- Switches
- Terminal Blocks
- Relays & Circuit Breakers
- Visit our web-site: www.tycoelectronics.com

Industrial Machinery

AGASTAT
ALCOSWITCH
AMP
AXICOM
BUCHANAN
HTS
OEG
P&B
SCHRACK

tyco
Electronics

interconnect solutions for...

- Cable Assemblies
- Connectors
- Relays & Circuit Breakers
- Switches
- Terminal Blocks
- Visit our web-site: www.tycoelectronics.com

Instrumentation

AGASTAT
ALCOSWITCH
AMP
AXICOM
BUCHANAN
CI
MICRODOT
OEG
P&B
SCHRACK

tyco
Electronics

AMP
Alcoswitch
BUCHANAN

interconnect solutions for...

- Interconnection Expertise...
- Concept to Production...
- Products and Services...
- Visit our web-site: www.tycoelectronics.com

Security

Americas

Argentina – Buenos Aires
 Phone: +54-11-4733-2200
 Fax: +54-11-4733-2250

Brasil – São Paulo
 Phone: +55-11-3611-1311
 Fax: +55-11-3611-0397

Canada – Markham
 Phone: +905-475-6222
 Fax: +905-474-5520
**Product Information Center:
 (Technical Support)**
 Phone: +905-470-4425
 Fax: +905-474-5525

Colombia – Bogota
 Phone: +57-1-240-9396
 Fax: +57-1-660-0206

Mexico – Mexico City
 Phone: +52-55-5-729-0425
 Fax: +52-55-5-398-1430

United States – Harrisburg, PA
 Phone: +717-564-0100
 Fax: +717-986-7575
**Product Information Center:
 (Technical Support)**
 Phone: +800-522-6752
 Fax: +717-986-7575

**For Latin/South American
 Countries not shown**
 Phone: +57-1-240-9396
 Fax: +57-1-660-0206

Asia/Pacific

Australia – Sydney
 Phone: +61-2-9840-8200
 Fax: +61-2-9899-5649
**Product Information Center:
 (Technical Support)**
 Phone: +61-2-9554-2600
 Fax: +61-2-9502-2556

India – Bangalore
 Phone: +91-80-841-0200
 Fax: +91-80-841-0210

Indonesia – Jakarta
 Phone: +6221-526-7852
 Fax: +6221-526-7856

Japan – Kawasaki, Kanagawa
 Phone: +81-44-844-8079
 Fax: +81-44-844-8733
**Product Information Center:
 (Technical Support)**
 Phone: +81-44-844-8013
 Fax: +81-44-812-3200
Raychem Products
 Phone: +81-44-900-5102
 Fax: +81-44-5025-5027

Korea – Seoul
 Phone: +82-2-3274-0535
 Fax: +82-2-3274-0524/0531

Malaysia – Selangor
 Phone: +60-3-7053055
 Fax: +60-3-7053066

New Zealand – Auckland
 Phone: +64-9-634-4580
 Fax: +64-9-634-4586

Philippines – Makati City
 Phone: +632-867-8641
 Fax: +632-867-8661

People's Republic of China
 Hong Kong
 Phone: +852-2735-1628
 Fax: +852-2735-0243

Shanghai
 Phone: +86-21-6485-0602
 Fax: +86-21-6485-0728

Shunde
 Phone: +86-765-775-1368
 Fax: +86-765-775-2823

Singapore – Singapore
 Phone: +65-482-0311
 Fax: +65-482-1012

Raychem Products
 Phone: +65-486-6151
 Fax: +65-654-5514

Taiwan – Taipei
 Phone: +886-2-2664-9977
 Fax: +886-2-2664-9900

Thailand – Bangkok
 Phone: +66-2-955-0500
 Fax: +66-2-955-0505

Vietnam – Ho Chi Minh City
 Phone: +84-8-8232-546/7
 Fax: +84-8-8221-443

Europe/Middle East/Africa

Austria – Vienna
 Phone: +43-190-560-0
 Fax: +43-190-560-1333

Belgium – Kessel-Lo
 Phone: +32-16-352-300
 Fax: +32-16-352-352

Bulgaria – Sofia
 Phone: +359-2-971-2152
 Fax: +359-2-971-2153

Czech Republic – Kurim
 Phone: +420-5-41-162-111
 Fax: +420-5-41-162-223

Denmark – Viby J
 Phone: +45-70-15-52-00
 Fax: +45-86-29-51-33

Egypt – Cairo
 Phone: +20-2-417-76-47
 Fax: +20-2-419-23-34

Estonia – Tallinn
 Phone: +372-65-05-474
 Fax: +372-65-05-470

Finland – Helsinki
 Phone: +358-95-12-34-20
 Fax: +358-95-12-34-250

France – Cergy-Pontoise
 Phone: +33-1-3420-8888
 Fax: +33-1-3420-8600
**Product Information Center:
 (Technical Support)**
 Phone: +33-1-3420-8943
 Fax: +33-1-3420-8623

France
Tyco Electronics Export – St Ouen L'Aumone
 Phone: +33-1-3440-7200
 Fax: +33-1-3440-7220 or
 +33-1-3440-7230

Germany – Bensheim
 Phone: +49-6251-133-0
 Fax: +49-6251-133-1600
**Product Information Center:
 (Technical Support)**
 Phone: +49-6251-133-1999
 Fax: +49-6251-133-1988

Germany – Langen
 Phone: +49-6103-709-0
 Fax: +49-6103-709-1223

Germany – Speyer
 Phone: +49-6232-30-0
 Fax: +49-6232-30-2243

Germany
HTS Division – Neunkirchen
 Phone: +49-2247-305-0
 Fax: +49-2247-305-122

Great Britain – Stanmore Middlesex
 Phone: +44-181-954-2356
 Fax: +44-181-954-6234
**Product Information Center:
 (Technical Support)**
 Freephone GB: 0800-267-666
 Phone: +44-141 810 8967...69
 Fax: +44-141 810 8971

Great Britain – Dorcan, Swindon
Raychem Products
 Phone: +44-1793-528171
 Fax: +44-1793-572516

Greece – Athens
 Phone: +30-1-9370-396/397
 Fax: +30-1-9370-655

Hungary – Budapest
 Phone: +36-1-289-1000
 Fax: +36-1-289-1010

Ireland – Dublin
 Phone: +353-1-820-3000
 Fax: +353-1-820-9790

Israel – Yokneam
 Phone: +972-4-959-0508
 Fax: +972-4-959-0506

Italy – Collegno (Torino)
 Phone: +39-011-4012-111
 Fax: +39-011-4031-116

Lithuania – Vilnius
 Phone: +370-5-21-31-402
 Fax: +370-5-21-31-403

Netherlands – 's-Hertogenbosch
 Phone: +31-73-6246-246
 Fax: +31-73-6212-365
**Product Information Center:
 (Technical Support)**
 Phone: +31-73-6246-999
 Fax: +31-73-6246-998

Norway – Nesbru
 Phone: +47-66-77-88-99
 Fax: +47-66-77-88-55

Poland – Warsaw
 Phone: +48-22-5490-888
 Fax: +48-22-5490-880

Romania – Bucharest
 Phone: +40-1-311-3479+3596
 Fax: +40-1-312-0574

Russia – Moscow
 Phone: +7-095-926-55-06...09
 Fax: +7-095-926-55-05

Russia – St. Petersburg
 Phone: +7-812-325-30-83
 Fax: +7-812-325-32-88

Scotland – Dundee
Madison Cable Products
 Phone: +44-1382-508080
 Fax: +44-1382-505060

Slovakia – Banská Bystrica
 Phone: +421-48-415-20-11/12
 Fax: +421-48-415-20-13

Slovenia – Ljubljana
 Phone: +386-1561-3270
 Fax: +386-1561-3240

South Africa – Port Elizabeth
 Phone: +27-41-405-4500
 Fax: +27-41-486-1314

Spain – Barcelona
 Phone: +34-93-291-0330
 Fax: +34-93-201-7879
**Product Information Center:
 (Technical Support):**
 Phone: +34-93-291-0330
 Fax: +34-93-200-3779

Sweden – Upplands Väsby
 Phone: +46-8-50-72-50-00
 Fax: +46-8-50-72-50-01

Switzerland – Steinach
 Phone: +41-71-447-0447
 Fax: +41-71-447-0444

Turkey – Istanbul
 Phone: +90-212-281-8181...3
 +90-212-282-5130/5430
 Fax: +90-212-281-8184

Ukraine – Kiev
 Phone: +38-044-238-6908
 Fax: +38-044-568-5740

tyco

Electronics

TYCO ELECTRONICS CORPORATION
WWW.TYCOELECTRONICS.COM

AMP

