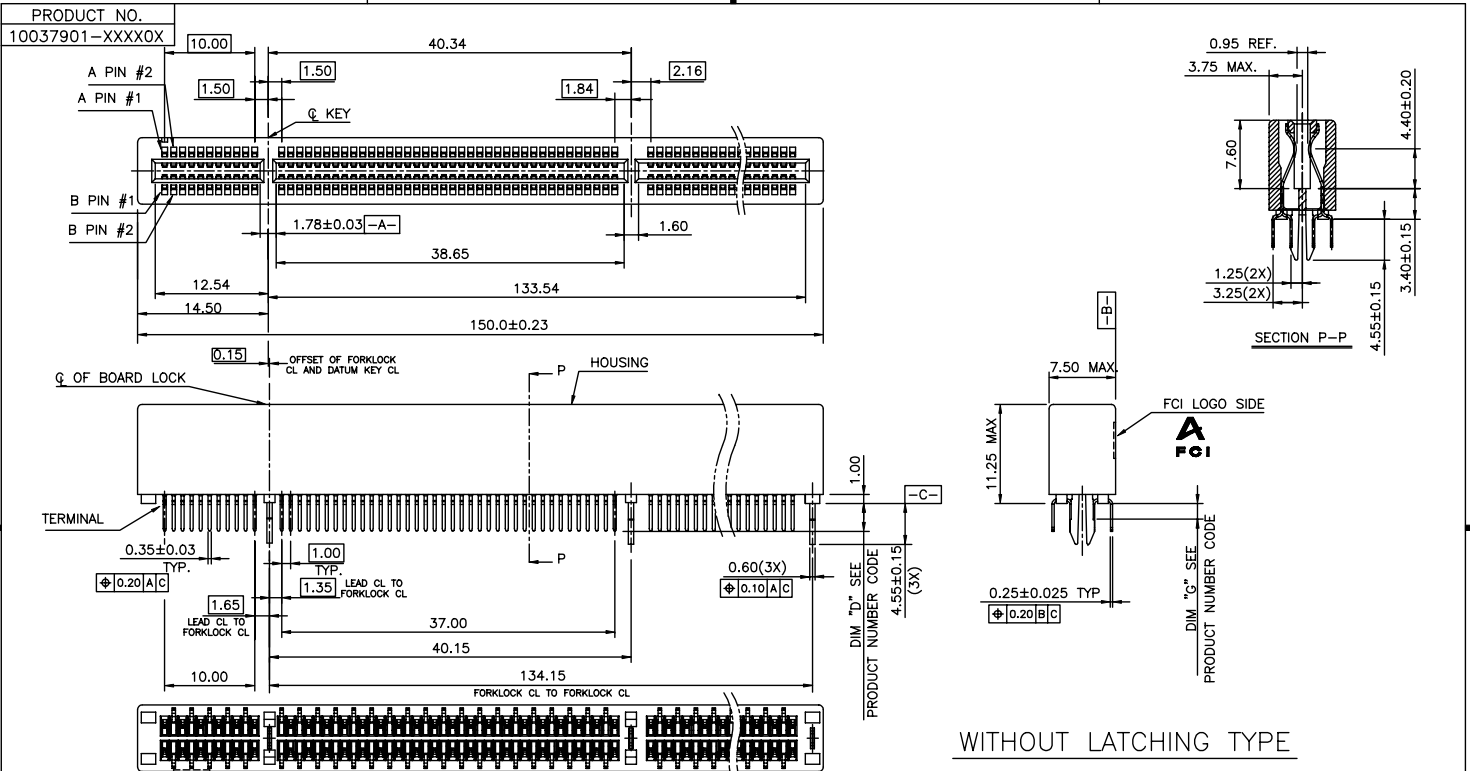


Tous droits strictement réservés. Reproduction ou communication a des tiers interdite sous quelque forme que ce soit sans autorisation écrite du propriétaire. Property of FCI. Droits de reproduction FCI.

All rights strictly reserved. Reproduction or issue to third parties in any form whatever is not permitted without written authority from the proprietor. Property of FCI. Copyright FCI.



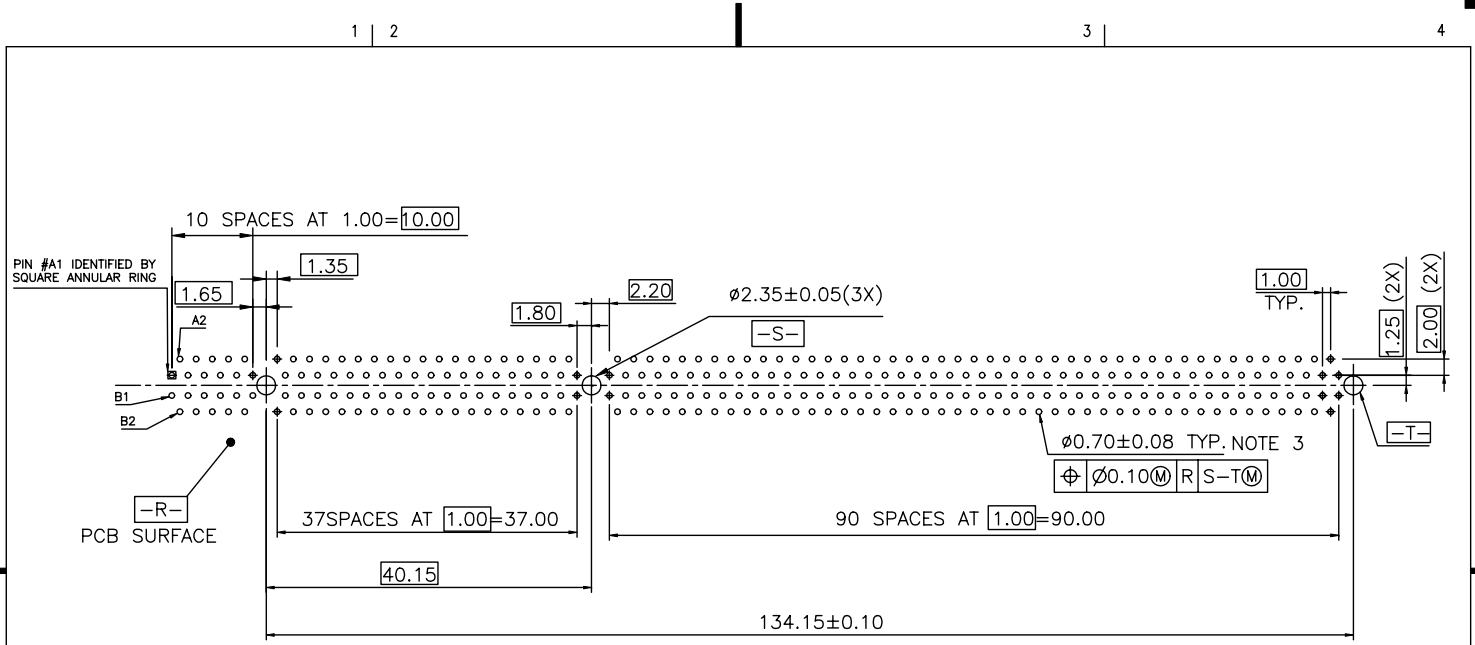
CONFIDENTIAL

mat'l. code				tolerances unless otherwise specified			CUSTOMER COPY		FCI	
ltr	ecn no	dr	date	linear	.X ± 0.30	projection	MM	title	www.fciconnect.com	
A	T04-0383	M W	10/06/04		.XX ± 0.20	MM		PCI EXPRESS SUPER SLOT		
B	T05-0012	M W	01/13/05	angles	.XXX ± 0.10	MM		CARD EDGE 280P ASS'Y		
C	T05-0210	M W	09/15/05		0° ± 2°	MM				
				dr	MAGGIE WU 01/30/04	scale	2:1	product family	EDGE CARD	
				enrg	R Y LIU 01/30/04			code	TWN	
				chr	PAUL WANG 01/30/04			size	10037901	
				appd	J. HSIA 01/30/04			dwg no	1 of 4	
sheet index	revision sheet	C	A	A	C					
		1	2	3	4					

ACAD PDM: Rev:C STATUS:Released 22526 Formed Aug.02, 2008


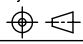
Tous droits strictement réservés. Reproduction ou communication a des tiers interdite sous quelque forme que ce soit sans autorisation écrite du propriétaire. Property of FCI. Droits de reproduction FCI.

All rights strictly reserved. Reproduction or issue to third parties in any form whatever is not permitted without written authority from the proprietor. Property of FCI. Copyright FCI.



MOTHER BOARD FOOTPRINT PATTERN  
CONNECTOR SIDE SHOWN

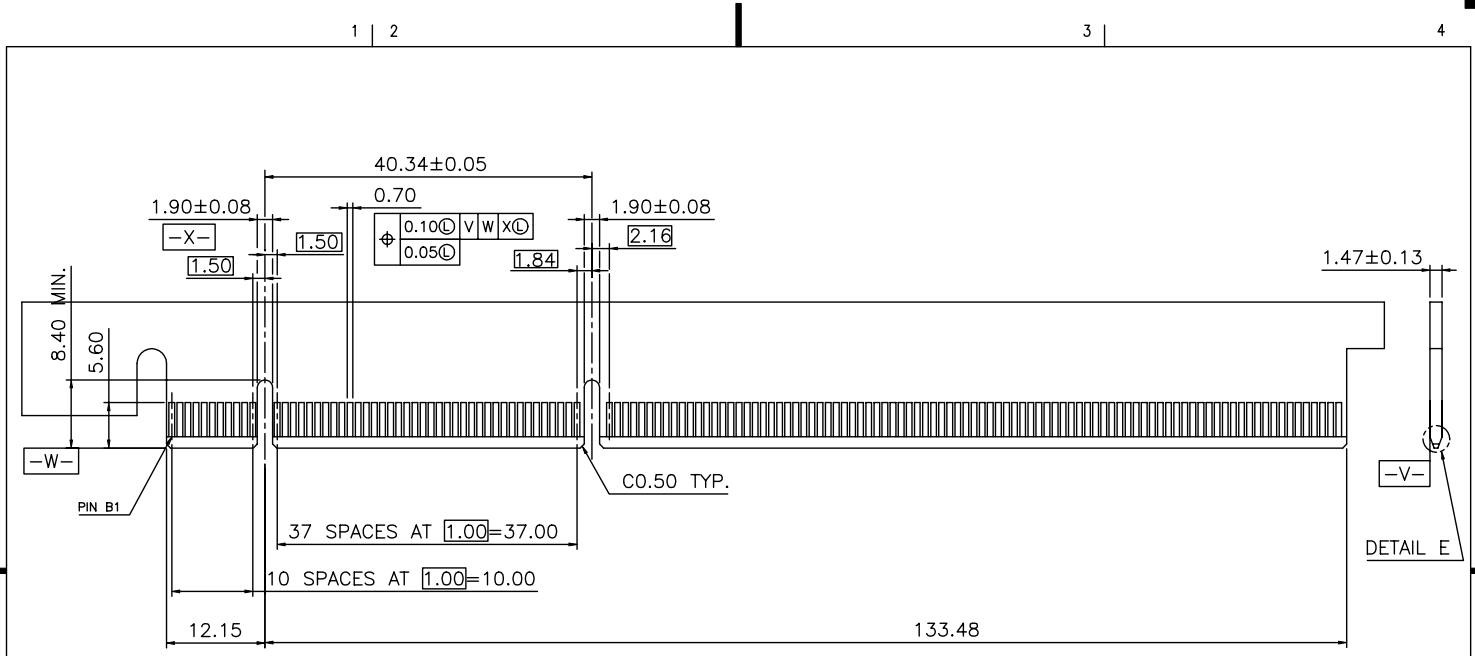
CONFIDENTIAL

mat'l. code				tolerances unless otherwise specified		CUSTOMER COPY		 <a href="http://www.fciconnect.com">www.fciconnect.com</a>		
ltr	ecn no	dr	date	linear	.X ±	projection		title		
A					.XX ±	MM		PCI EXPRESS SUPER SLOT		
				angles	.XXX ±	scale		product family	EDGE CARD	code
				dr	0° ± 2°	1.5:1	A4	size	10037901	TWN
				enrg				dwg no		sheet
				chr	MAGGIE WU 01/30/04					2 of
				appd	R Y LIU 01/30/04					
					PAUL WANG 01/30/04					
					J. HSIA 01/30/04					
sheet index	revision sheet									

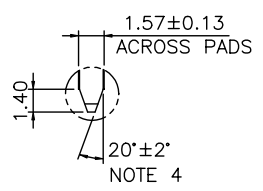
ACAD PDM: Rev:C STATUS: Released cage code 22526 Printed: Aug 02, 2008

Tous droits strictement réservés. Reproduction ou communication a des tiers interdite sous quelque forme que ce soit sans autorisation écrite du propriétaire. Property of FCI. Droits de reproduction FCI.

All rights strictly reserved. Reproduction or issue to third parties in any form whatever is not permitted without written authority from the proprietor. Property of FCI. Copyright FCI.



DAUGHTER CARD  
PRIMARY (COMPONENT) SIDE



SCALE 2:1  
DETAIL E

CONFIDENTIAL

mat'l. code				tolerances unless otherwise specified		CUSTOMER COPY		FCI www.fciconnect.com	
ltr	ecn no	dr	date	linear	.X ±	projection	title		
A					.XX ±	MM	PCI EXPRESS SUPER SLOT CARD EDGE 280P ASS'Y		
				angles	.XXX ±	MM	product family	EDGE CARD	code
				dr	0° ±2°	scale	size	dwg no	TWN
				engr		1.5:1	A4	10037901	sheet
				chr	MAGGIE WU 01/30/04				3 of
				enr	R Y LIU 01/30/04				
				chr	PAUL WANG 01/30/04				
				appd	J. HSIA 01/30/04				
sheet index	revision sheet								

ACAD PDM: Rev:C STATUS:Released cage code 22526 Printed Aug 02, 2008

NOTES:

- 1.MATERIAL:
  - HOUSING: HIGH TEMPERATURE NYLON, GLASS FILLED UL94V-0 RATED. SUITABLE FOR IR REFLOW.
  - TERMINAL: COPPER ALLOY
  - PLATING: 50u" NICKEL UNDERPLATE ALL OVER  
CONTACT AREA PLATING - SEE PRODUCT NUMBER CODE  
SOLDER TAIL: TIN OR TIN/LEAD (90/10) - SEE PRODUCT NUMBER CODE 100u" MIN. OVER 50u" NICKEL
  - METAL BOARD LOCKS: COPPER ALLOY  
FINISH: 100u" TIN OR TIN/LEAD (90/10) OVER 50u" NICKEL UNDERPLATE SEE PRODUCT NUMBER CODE
- 2.PRODUCT SPECIFICATION: GS-12-233
- ③THE HORIZONTAL AXIS FOR THE HOLE PATTERN IS ESTABLISHED BY A LINE THROUGH THE CENTER OF THE TWO Ø2.35 HOLES. THE VERTICAL AXIS IS 90° TO THE HORIZONTAL AXIS, THROUGH THE CENTER OF DATUM Z.
- ④CHAMFER EDGES MUST BE FREE OF CUTTING BURRS.
- 5.RoHS COMPATIBLE PRODUCT SPECIFICATIONS
  - a - PLATING:
    - "LF" MEANS THE PRODUCT IS LEAD-FREE, 2um MINIMUM MATTE TIN OVER 1.27um MINIMUM NICKEL UNDERPLATE.
  - b - MANUFACTURING PROCESS COMPATIBILITY
    - THE HOUSING WILL WITHSTAND EXPOSURE TO 260°C±5°C SOLDER BATH TEMPERATURE FOR 5 SECONDS IN A REFLOW SOLDER APPLICATION WITH A 1.6mm MIN THICK CIRCUIT BOARD.

PRODUCT NUMBER CODE

10037901 -x x x x x □ □

HOUSING COLOR OPTIONS  
1-BLACK

PEGS OPTIONS  
1-METAL BOARD LOCKS

TERMINAL PLATING OPTIONS

LATCHING OPTIONS  
0-WITHOUT LATCHING

PACKAGING OPTIONS  
T-TRAY PACKAGING

LEAD FREE OPTION  
LEAVE BLANK FOR TERMINAL PLATING 3,4,5  
"LF" FOR TERMINAL PLATING OPTION 0,1,2

TAIL LENGTH OPTIONS

	DIM "D"	PCB THICKNESS	BOARD LOCKS DIM "G"
0	2.30 ±0.25	1.56±0.10	1.70±0.15
1	3.10 ±0.25	2.36±0.10	2.50±0.15
2	2.54±0.25	1.56±0.10	1.70±0.15

- 0-50u" Ni UNDERPLATE  
30u" Au CONTACT AREA  
100u" TIN TAIL AREA ----- COMPATIBLE RoHS
- 1-50u" Ni UNDERPLATE  
15u" Au CONTACT AREA  
100u" TIN TAIL AREA ----- COMPATIBLE RoHS
- 2-50u" Ni UNDERPLATE  
GOLD FLASH CONTACT AREA  
100u" TIN TAIL AREA ----- COMPATIBLE RoHS
- 3-50u" Ni UNDERPLATE  
30u" Au CONTACT AREA  
100u" TIN/LEAD TAIL AREA ----- INCOMPLIANT RoHS
- 4-50u" Ni UNDERPLATE  
15u" Au CONTACT AREA  
100u" TIN/LEAD TAIL AREA ----- INCOMPLIANT RoHS
- 5-50u" Ni UNDERPLATE  
GOLD FLASH CONTACT AREA  
100u" TIN/LEAD TAIL AREA ----- INCOMPLIANT RoHS

CONFIDENTIAL

mat'l. code				tolerances unless otherwise specified		CUSTOMER COPY		FCI www.fciconnect.com	
ltr	ecr no	dr	date	linear	.X ±	projection	title	PCI EXPRESS SUPER SLOT CARD EDGE 280P ASS'Y	
C					.XX ±		product family	EDGE CARD	code
				angles	.XXX ±		MM	size	dwg no
					0° ±2°	scale	A4	10037901	sheet 4 of
sheet index	revision sheet			dr	MAGGIE WU 01/30/04	1:1			
				enrg	R Y LIU 01/30/04				
				chr	PAUL WANG 01/30/04				
				appd	J. HSIA 01/30/04				

ACAD

PDM: Rev:C

STATUS:Released 22526 Formed Aug 02, 2008

Tous droits strictement reserves. Reproduction ou communication a des tiers interdite sous quelque forme que ce soit sans autorisation écrite du propriétaire. Property of FCI. Droits de reproduction FCI.

All rights strictly reserved. Reproduction or issue to third parties in any form whatever is not permitted without written authority from the proprietor. Property of FCI. Copyright FCI.