



# SC242 (Slot 1) Standard Edge Connectors

Vertical, 242 position

## Features

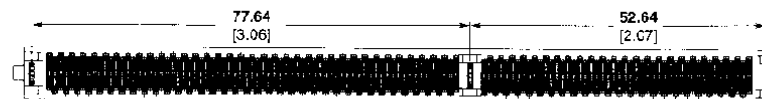
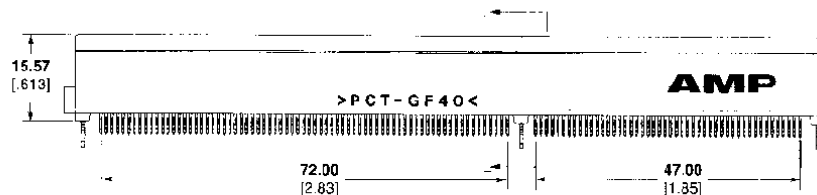
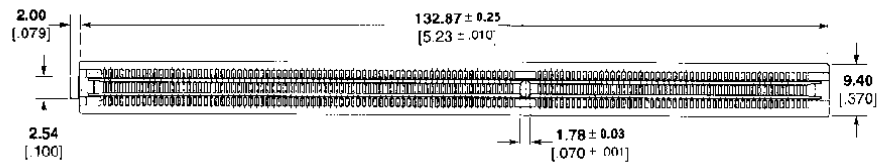
- Fully compatible with Intel Pentium II processor module
- High temperature housing suitable for surface mount reflow processes
- Worldwide manufacturing capability
- Pivoting board lock feature offering connector centering before contacts enter pc board holes
- Staggered contact mating pads for lower card insertion forces

## Material and Finish

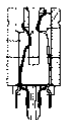
**Housing** — Thermoplastic, brown

**Contacts** — Phosphor bronze, plated  
0.00038 [0.00015] min. gold over  
0.00127 [0.00050] min. nickel in contact  
area; 0.00254 [0.00100] min. tin-lead  
over 0.00127 [0.00050] min. nickel  
in solder tail area

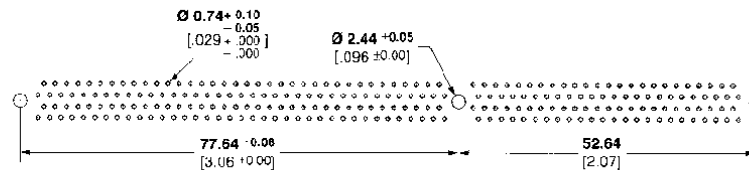
**Hold Downs** — Brass plated 0.00381  
[0.00150] min. tin-lead over 0.00127  
[0.00050] min. nickel



Section L-L



Solder Tail



Recommended PC Board Layout

Solder Tail Length	Part Number
2.16 [0.85]	145251-1
2.54 [0.100]	145251-2 145519-4*
3.18 [0.125]	145251-3 145519-1*
straddle mount	145386-1

\* Gold flash plated

Housing not suitable for reflow process