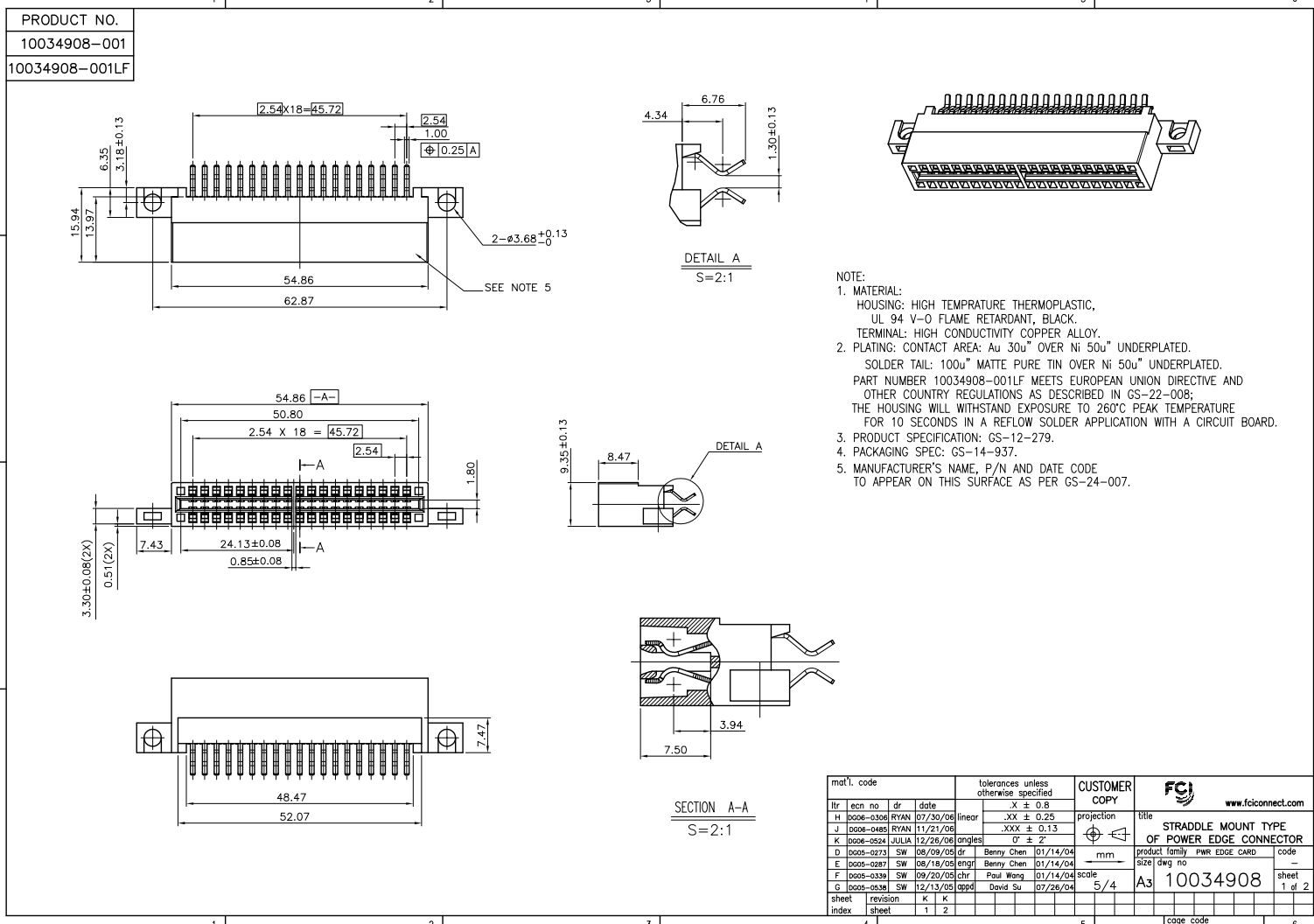


Tous droits strictement réservés. Reproduction ou communication à des tiers interdite sans autorisation écrite du propriétaire. Property of © FCI ELECTRONICS. Copyright © FCI ELECTRONICS INC.



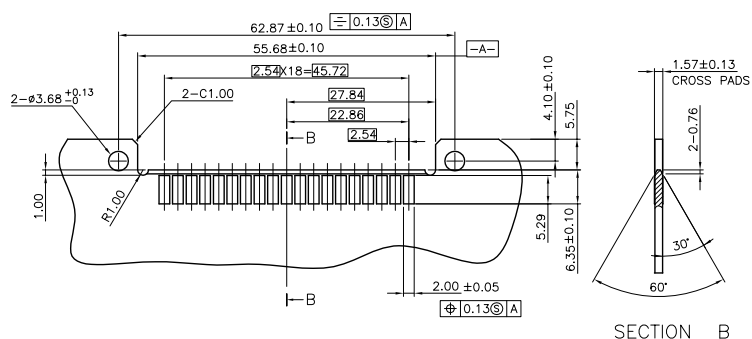
- NOTE:
- MATERIAL:  
HOUSING: HIGH TEMPERATURE THERMOPLASTIC, UL 94 V-0 FLAME RETARDANT, BLACK.  
TERMINAL: HIGH CONDUCTIVITY COPPER ALLOY.
  - PLATING: CONTACT AREA: Au 30u" OVER Ni 50u" UNDERPLATED.  
SOLDER TAIL: 100u" MATTE PURE TIN OVER Ni 50u" UNDERPLATED.  
PART NUMBER 10034908-001LF MEETS EUROPEAN UNION DIRECTIVE AND OTHER COUNTRY REGULATIONS AS DESCRIBED IN GS-22-008; THE HOUSING WILL WITHSTAND EXPOSURE TO 260°C PEAK TEMPERATURE FOR 10 SECONDS IN A REFLOW SOLDER APPLICATION WITH A CIRCUIT BOARD.
  - PRODUCT SPECIFICATION: GS-12-279.
  - PACKAGING SPEC: GS-14-937.
  - MANUFACTURER'S NAME, P/N AND DATE CODE TO APPEAR ON THIS SURFACE AS PER GS-24-007.

mat'l. code		tolerances unless otherwise specified		CUSTOMER COPY		FCI		www.fciconnect.com	
lfr	ecm no	dr	date	linear	X ± 0.8	projection			
H	0206-0306	RYAN	07/30/06		.XX ± 0.25				
J	0206-0485	RYAN	11/21/06		.XXX ± 0.15				
K	0206-0524	DJLIR	12/28/06	angles	0° ± 2'				
D	0205-0223	SW	06/09/05	dr			product family	pwr edge card	code
E	0205-0287	SW	06/18/05	engr			size	dwg no	
F	0205-0339	SW	09/20/05	chr			10034908		
G	0205-0536	SW	12/13/05	appd			5/4		
sheet	revision	K	K						
index	sheet	1	2						
							code code	22526	

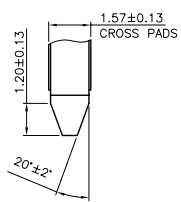
PDM: Rev:K STATUS:Released Printed: Dec 03, 2010

Tous droits strictement réservés. Reproduction ou communication à des tiers interdite sans autorisation écrite du propriétaire. Property of © FCI ELECTRONICS. Copyright © FCI ELECTRONICS INC. All rights strictly reserved. Reproduction or issue to third parties in any form whatever is not permitted without written authority from the proprietor. Property of © FCI ELECTRONICS. Copyright © FCI ELECTRONICS INC.

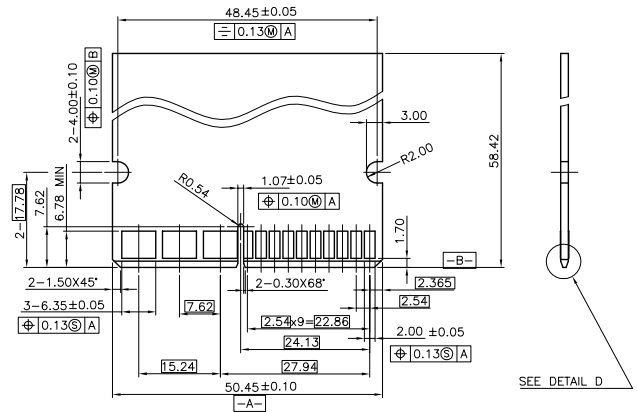
PRODUCT NO.
10034908-001
10034908-001LF



RECOMMENDED PC BOARD LAYOUT FOR CONNECTOR SOLDER TAILS



DETAIL D SCALE 5:1



RECOMMENDED MATING BOARD EDGE CONFIGURATION

mat'l. code		tolerances unless otherwise specified		CUSTOMER COPY		FCI www.fciconnect.com	
ltr	ecm no	dr	date	linear	.XX ± 0.25	projection	title
K					.XXX ± 0.13	⊕	STRADDLE MOUNT TYPE OF POWER EDGE CONNECTOR
				angles	0° ± 2'	mm	product family
				dr	Benny Chen 01/14/04		pwr edge card
				engr	Benny Chen 01/14/04		code
				chr	Paul Wang 01/14/04	5/4	size
				appd	David Su 07/26/04		dwg no
sheet	revision						10034908
index	sheet						2 of 2
							code code
							22526

PDM: Rev:K STATUS:Released Printed: Dec 03, 2010