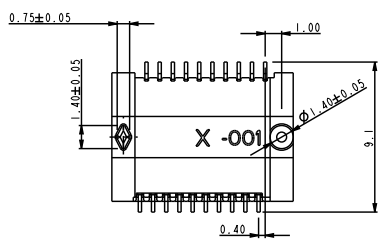
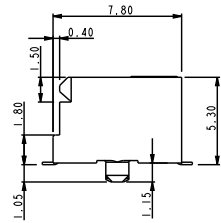
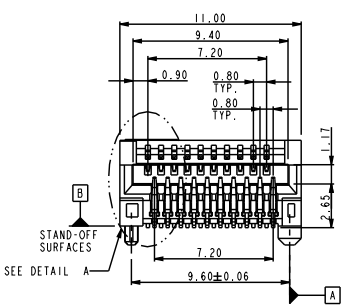
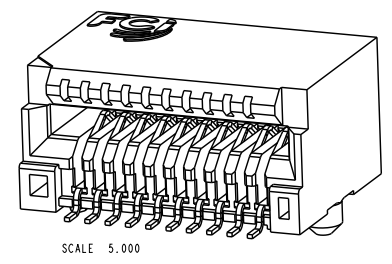
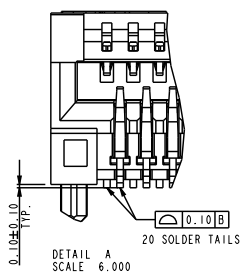
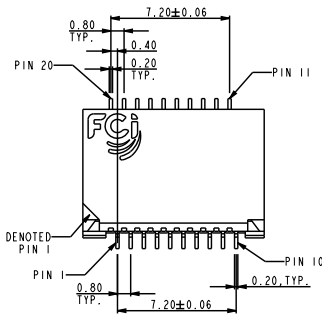


PRODUCT NO  
10084423-X01LF



NOTE:  
1. Material:  
HOUSING: HIGH TEMPERATURE LCP, BLACK  
UL 94 V-0 FLAME RETARDANT.  
TERMINAL: NICKEL COPPER ALLOY.  
PLATING SPEC AS BELOW:  
FOR CONTACT AREA:  
-101LF FOR 0.76 MICROMETERS MIN. THICKNESS GOLD.  
-201LF FOR 0.38 MICROMETERS MIN. THICKNESS GOLD.  
FOR SOLDER AREA:  
MATTE PURE TIN 3 MICROMETERS MIN. FOR TWO TYPES.  
FOR UNDERPLATING:  
-101LF AND -201LF: 2.54 MICROMETERS MIN. THICKNESS NICKEL  
2. PACKING SPEC: GS-14-1030.  
3. PRODUCT SPEC: GS-12-557.  
4. PART NUMBER SCHEME: (EX. 10084423-X01LF), PLEASE FIND THE PAGE 2 FOR OPTIONS.  
5. LEAD FREE NOTES:  
5a. THE HOUSING WILL WITHSTAND EXPOSURE TO 260° C PEAK TEMPERATURE FOR 10 SECONDS IN A CONVECTION, INFRARED OR VAPOR PHASE REFLOW OVEN.  
5b. THIS PRODUCT MEETS EUROPEAN UNION DIRECTIVES AND OTHER COUNTRY REGULATIONS AS DESCRIBED IN GS-22-008.  
6. THIS CONNECTOR IS DESIGNED TO WORK WITH RAIL SYSTEM THAT ALLOW THE MODULE TO "FLOAT" IN THE VERTICAL PLANE AND FIND EQUILIBRIUM BETWEEN THE UPPER AND LOWER CONTACT ROWS. THIS CONNECTOR WILL NOT PERFORM PROPERLY IF USED IN SYSTEMS THAT MECHANICALLY BIAS THE MODULE IN THE VERTICAL PLANE SUCH AS RAIL SYSTEMS WITH EMI SPRINGS.

www.fciconnect.com		surface	tolerance	std	projection	MM
Dr	KASON LUO	11/20/07	ANGULAR	0.x	±0.5	size A4
Eng	BENNY CHEN	11/20/07	LINEAR	0.xx	±0.25	Scale 1.000
Chr	PUAL WANG	11/20/07	0° ±2°	0.xxx	±0.10	ECN *
Appr	JOSEPH HSIA	11/20/07	Product family		Spec ref *	
rev	ecn no	dr	date		20	
A	0608-0028	Enh	02/15/08		10084423-101	
B	0608-0147	Junor	06/04/08		Rev. D	
C	0609-0123	Junor	04/21/09		* CUSTOMER DRAWING	
D	0610-0273	Junor	07/28/10		sheet 1 of 2	
-	-	-	-		-	
-	-	-	-		-	
-	-	-	-		-	

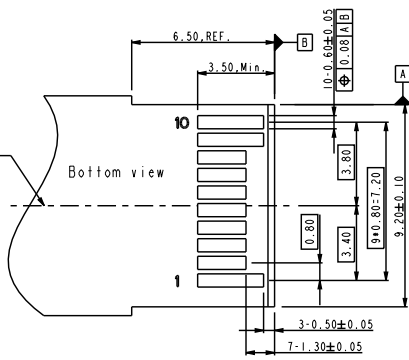
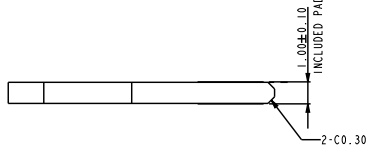
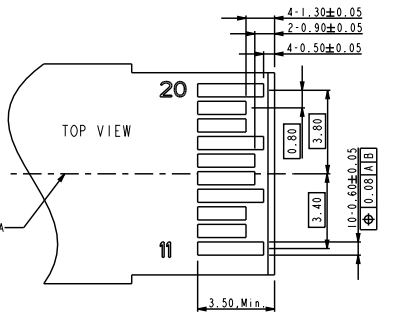


Copyright FCI.

REV F - 2004-04-17

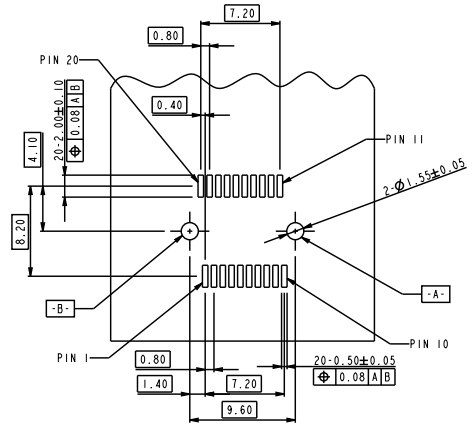
PDM: Rev:D STATUS Released 4 Printed: Jul 30, 2010

PRODUCT NO  
10084423-X01LF



RECOMMENDED LAYOUT  
MATING PCB SIDE

PART NUMBER	TERMINALS (Contact plating options)	TERMINALS (Underplating and Solder tail plating)	REMARK
10084423-101LF	0.76um, Min. Gold	Underplating: 2.54um Min. Nickel overall. Solder tail: 3um Min. Matte Tin.	
10084423-201LF	0.38um, Min. Gold	Underplating: 2.54um Min. Nickel overall. Solder tail: 3um Min. Matte Tin.	



RECOMMENDED PCB LAYOUT  
CONNECTOR MOUNTING SIDE

www.fciconnect.com		surface	tolerance std	projection	MM
		ANGULAR	TOLERANCES UNLESS OTHERWISE SPECIFIED		MM
Dr	BENNY CHEN	11/20/07	0.X	±	size A4
Eng	BENNY CHEN	11/20/07	0.XX	±0.13	Scale 2.000
Chr	PAUL WANG	11/20/07	0.XXX	±	ECN
Appr	JOSEPH HSIA	11/20/07	Product family		Spec ref
FCj		title		Part no	Rev.
		RECOMMENDED PCB LAYOUT FOR 20 POS. EDGE CARD CONNECTOR		10084423-101	D
catalog no				* CUSTOMER DRAWING	sheet 2 of 2

REV F - 2004-04-17